

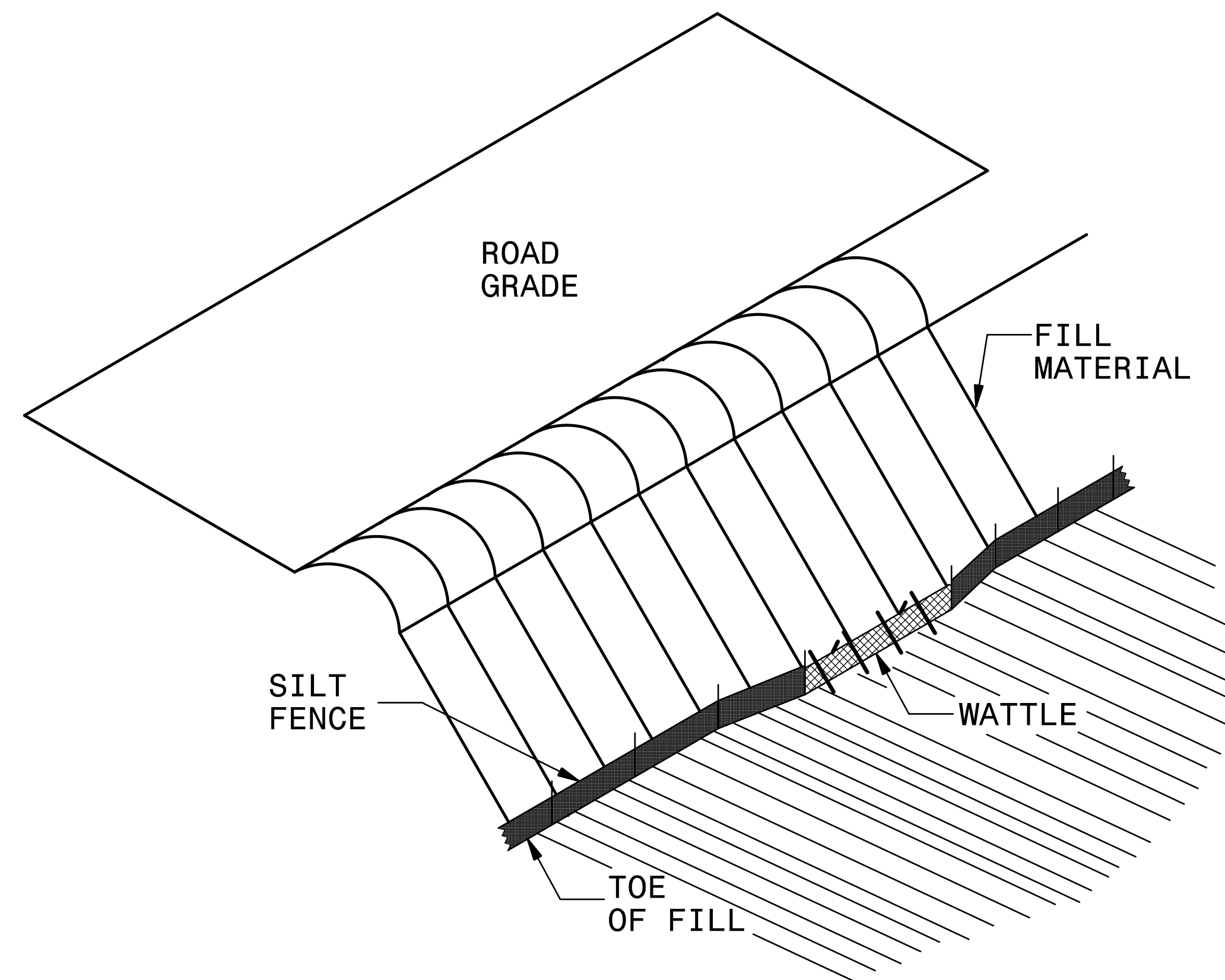
**This electronic collection of documents is provided
for the convenience of the user
and is Not a Certified Document –**

**The documents contained herein were originally issued
and sealed by the individuals whose names and license
numbers appear on each page, on the dates appearing
with their signature on that page.**

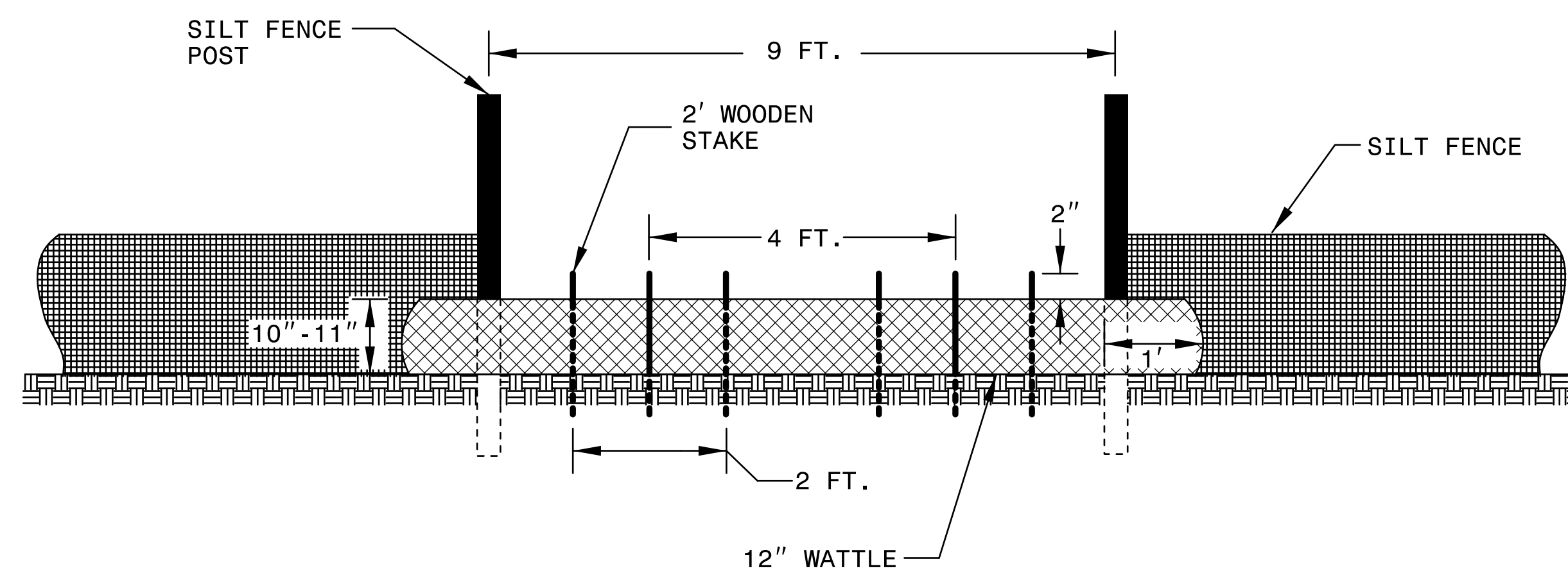
**This file or an individual page
shall not be considered a certified document.**

SILT FENCE COIR FIBER WATTLE BREAK DETAIL

PROJECT REFERENCE NO. <i>B-5302</i>	SHEET NO. <i>EC-2</i>
RW SHEET NO.	
ROADWAY DESIGN ENGINEER	HYDRAULICS ENGINEER



ISOMETRIC VIEW

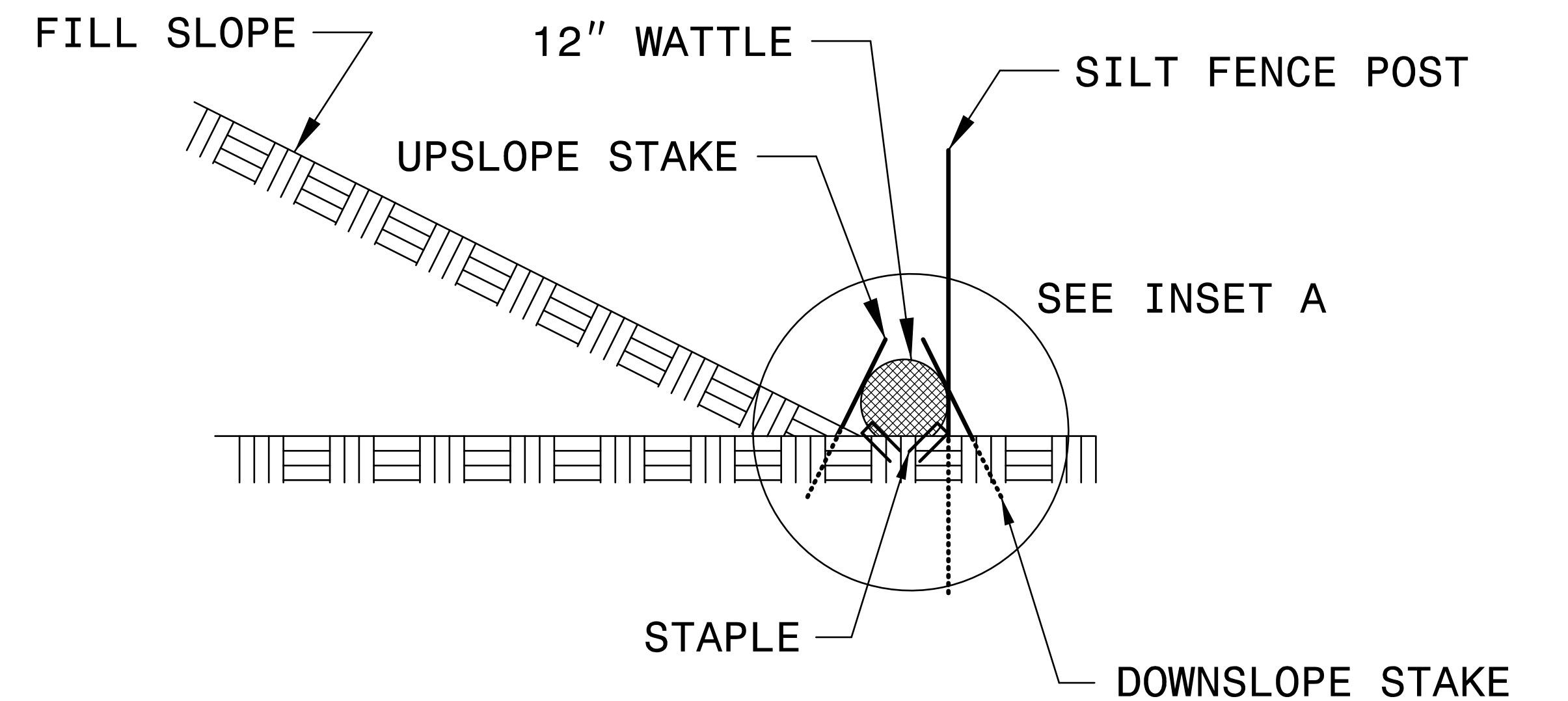
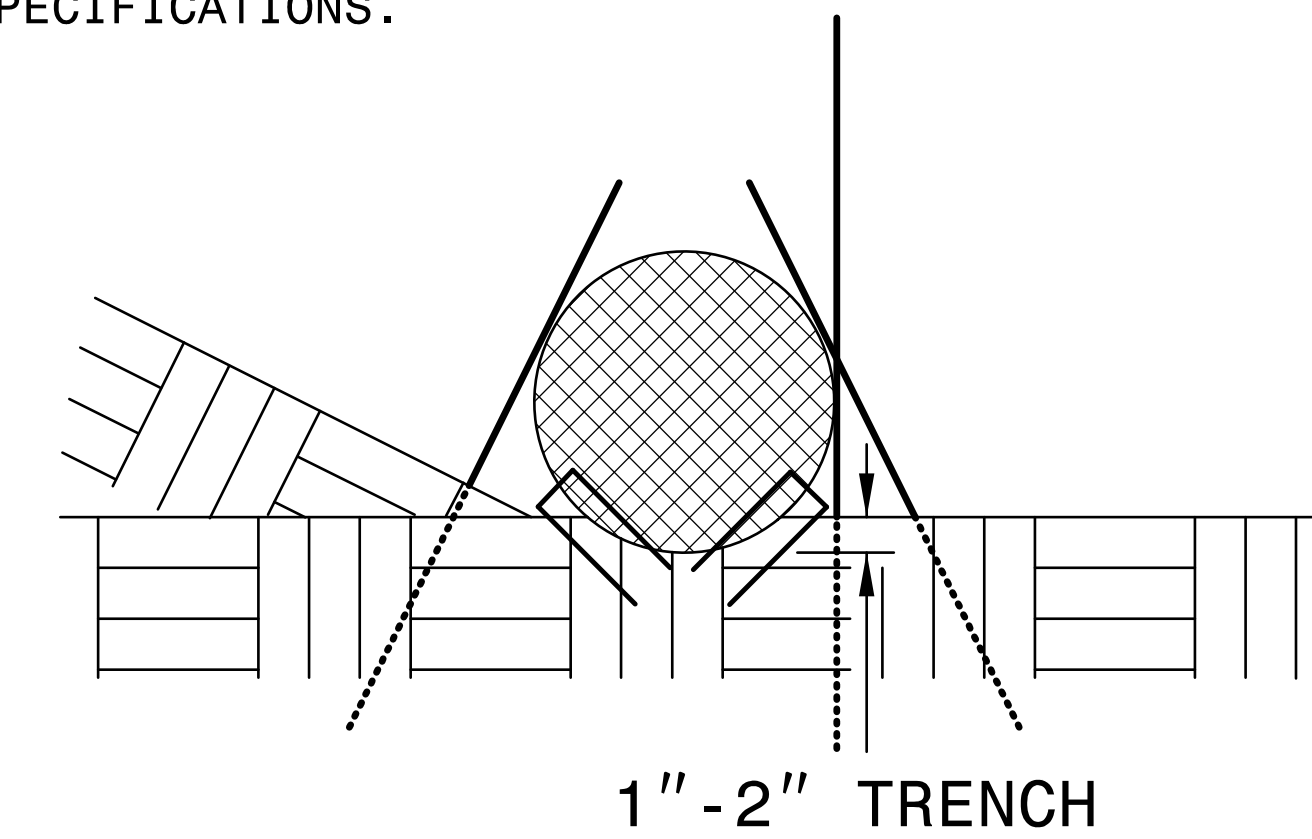


VIEW FROM SLOPE

NOTES:

- USE MINIMUM 12 IN. DIAMETER COIR FIBER (COCONUT FIBER) WATTLE AND LENGTH OF 10 FT.
- EXCAVATE A 1 TO 2 INCH TRENCH FOR WATTLE TO BE PLACED.
- DO NOT PLACE WATTLE ON TOE OF SLOPE.
- USE 2 FT. WOODEN STAKES WITH A 2 IN. BY 2 IN. NOMINAL CROSS SECTION.
- INSTALL A MINIMUM OF 2 UPSLOPE STAKES AND 4 DOWNSLOPE STAKES AT AN ANGLE TO WEDGE WATTLE TO GROUND.
- PROVIDE STAPLES MADE OF 0.125 IN. DIAMETER STEEL WIRE FORMED INTO A U SHAPE NOT LESS THAN 12" IN LENGTH.
- INSTALL STAPLES APPROXIMATELY EVERY 1 LINEAR FOOT ON BOTH SIDES OF WATTLE AND AT EACH END TO SECURE IT TO THE SOIL.
- WATTLE INSTALLATION CAN BE ON OUTSIDE OF THE SILT FENCE AS DIRECTED.
- INSTALL TEMPORARY SILT FENCE IN ACCORDANCE WITH SECTION 1605 OF THE STANDARD SPECIFICATIONS.

INSET A




SIDE VIEW

DIVISION OF HIGHWAYS
STATE OF NORTH CAROLINA

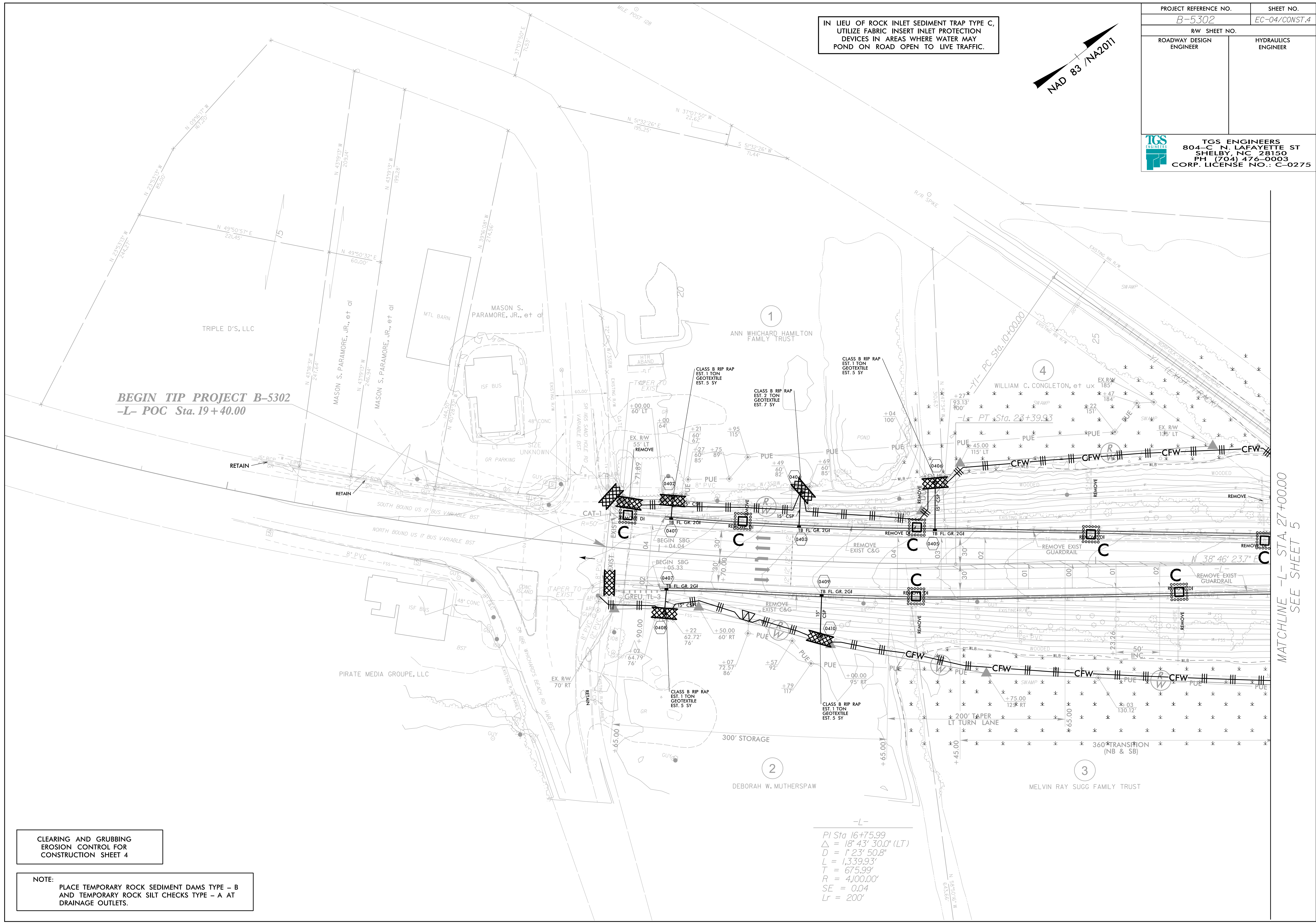
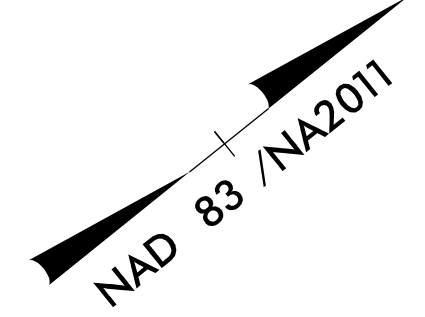
PROJECT REFERENCE NO. <i>B-5302</i>	SHEET NO. <i>EC-3</i>
ROADWAY DESIGN ENGINEER	HYDRAULICS ENGINEER

SOIL STABILIZATION TIMEFRAMES

<i>SITE DESCRIPTION</i>	<i>STABILIZATION TIME</i>	<i>TIMEFRAME EXCEPTIONS</i>
PERIMETER DIKES, SWALES, DITCHES AND SLOPES	7 DAYS	NONE
HIGH QUALITY WATER (HQW) ZONES	7 DAYS	NONE
SLOPES STEEPER THAN 3:1	7 DAYS	IF SLOPES ARE 10' OR LESS IN LENGTH AND ARE NOT STEEPER THAN 2:1, 14 DAYS ARE ALLOWED.
SLOPES 3:1 OR FLATTER	14 DAYS	7 DAYS FOR SLOPES GREATER THAN 50' IN LENGTH.
ALL OTHER AREAS WITH SLOPES FLATTER THAN 4:1	14 DAYS	NONE, EXCEPT FOR PERIMETERS AND HQW ZONES.

PROJECT REFERENCE NO.	SHEET NO.
B-5302	EC-04/CONST.4
RW SHEET NO.	
ROADWAY DESIGN ENGINEER	HYDRAULICS ENGINEER
 TGS ENGINEERS 804-C N. LAFAYETTE ST SHELBY, NC 28150 PH (704) 476-0003 CORP. LICENSE NO.: C-0275	

IN LIEU OF ROCK INLET SEDIMENT TRAP TYPE C,
 UTILIZE FABRIC INSERT INLET PROTECTION
 DEVICES IN AREAS WHERE WATER MAY
 POND ON ROAD OPEN TO LIVE TRAFFIC.



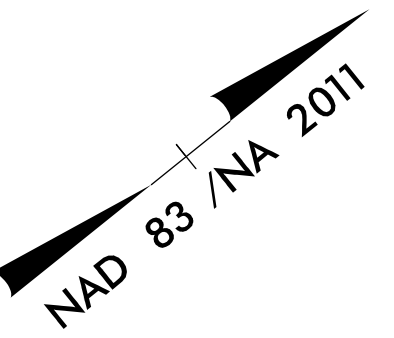
BEGIN TIP PROJECT B-5302
-L- POC Sta. 19+40.00

CLEARING AND GRUBBING
 EROSION CONTROL FOR
 CONSTRUCTION SHEET 4

NOTE:
 PLACE TEMPORARY ROCK SEDIMENT DAMS TYPE - B
 AND TEMPORARY ROCK SILT CHECKS TYPE - A AT
 DRAINAGE OUTLETS.

-L-
 PI Sta 16+75.99
 $\Delta = 18' 43' 30.0''$ (LT)
 $D = 1'23' 50.8''$
 $L = 1,339.93'$
 $T = 675.99'$
 $R = 4,100.00'$
 $SE = 0.04$
 $Lr = 200'$

MATCHLINE -L- STA. 27+00.00
 SEE SHEET 5



-YI- (EXIST TRACK)

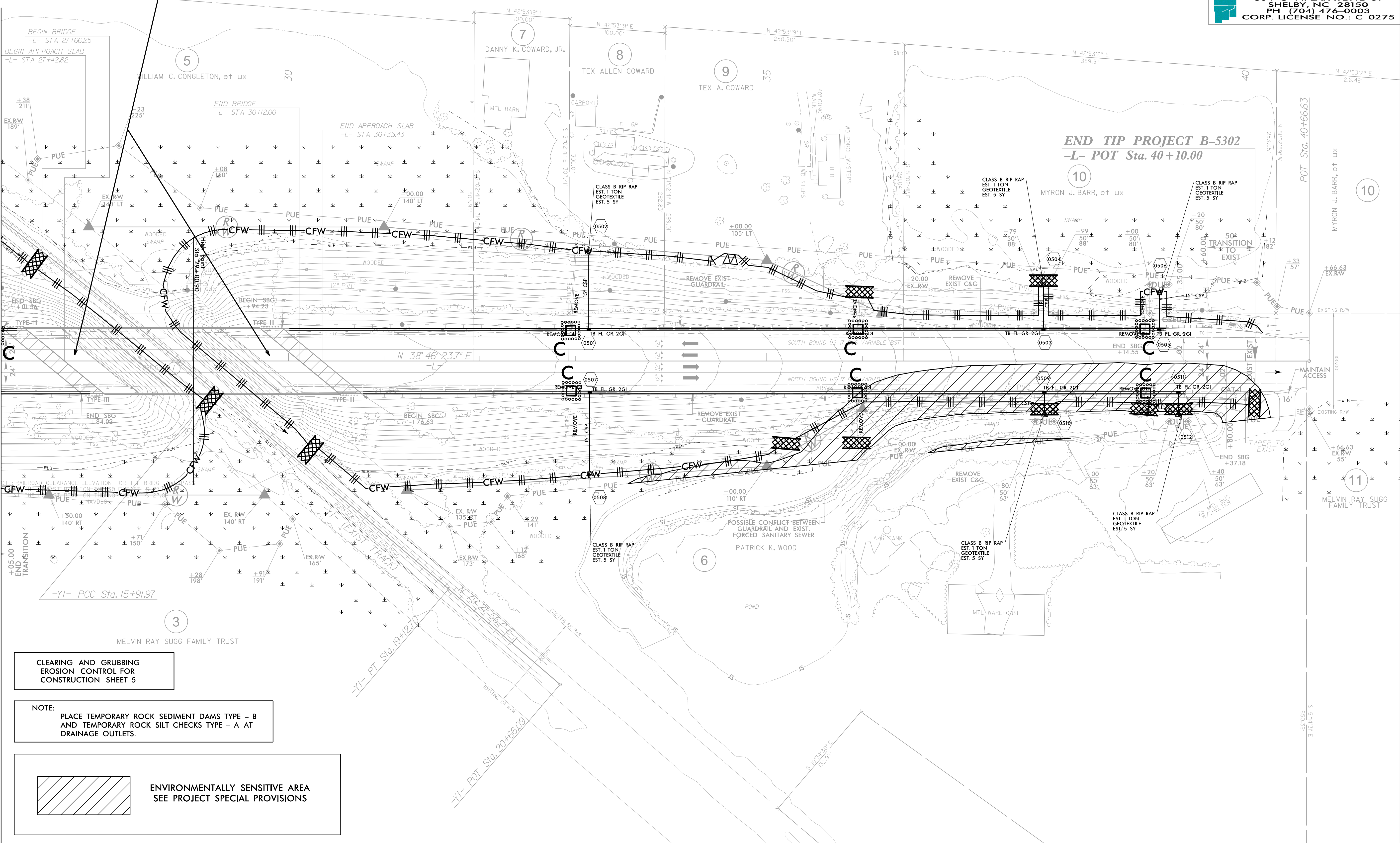
PI Sta 12+96.20	PI Sta 17+52.33
$\Delta = 5' 24'' 34.5'' (RT)$	$\Delta = 0' 37'' 28.5'' (RT)$
$D = 0' 54'' 49.8''$	$D = 0' 11'' 41.0''$
$L = 591.97'$	$L = 320.73'$
$T = 296.20'$	$T = 160.37'$
$R = 6,269.81'$	$R = 29,422.30'$

IN LIEU OF ROCK INLET SEDIMENT TRAP TYPE C, UTILIZE FABRIC INSERT INLET PROTECTION DEVICES IN AREAS WHERE WATER MAY POND ON ROAD OPEN TO LIVE TRAFFIC.

① -L- POT Sta. 28+85.96 = -YI- POC Sta. 15+43.96

PLACE COIR FIBER MATTING ON EXPOSED SOIL UNDER BRIDGE.


MATCHLINE -L- STA. 27+00.00 SEE SHEET 4



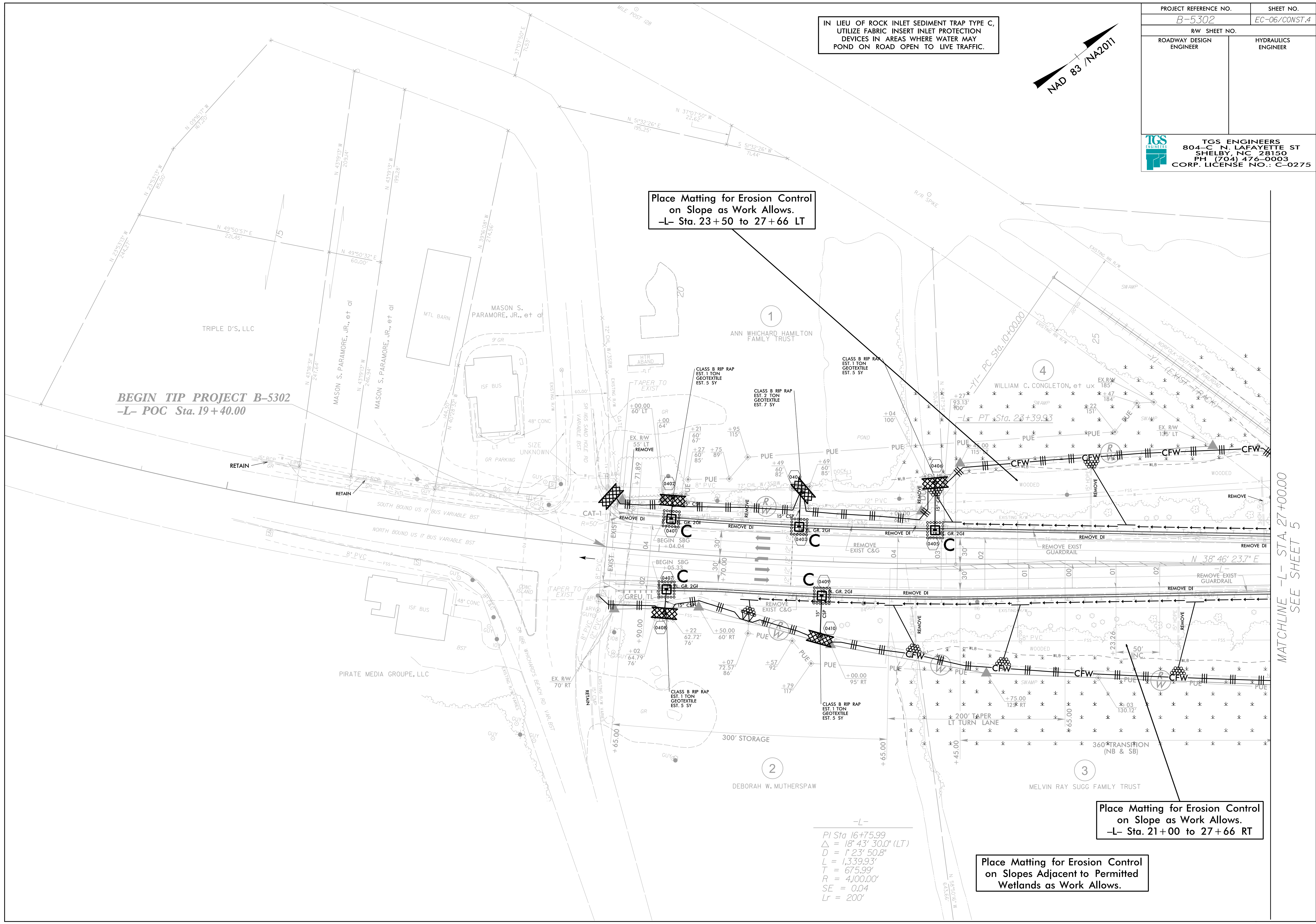
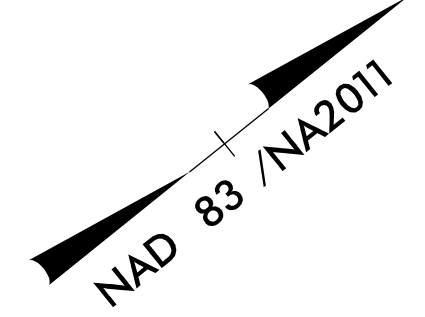
CLEARING AND GRUBBING EROSION CONTROL FOR CONSTRUCTION SHEET 5

NOTE:
PLACE TEMPORARY ROCK SEDIMENT DAMS TYPE - B AND TEMPORARY ROCK SILT CHECKS TYPE - A AT DRAINAGE OUTLETS.

 ENVIRONMENTALLY SENSITIVE AREA SEE PROJECT SPECIAL PROVISIONS

PROJECT REFERENCE NO.	SHEET NO.
B-5302	EC-06/CONST.4
RW SHEET NO.	
ROADWAY DESIGN ENGINEER	HYDRAULICS ENGINEER
 TGS ENGINEERS 804-C N. LAFAYETTE ST SHELBY, NC 28150 PH (704) 476-0003 CORP. LICENSE NO.: C-0275	

IN LIEU OF ROCK INLET SEDIMENT TRAP TYPE C, UTILIZE FABRIC INSERT INLET PROTECTION DEVICES IN AREAS WHERE WATER MAY POND ON ROAD OPEN TO LIVE TRAFFIC.



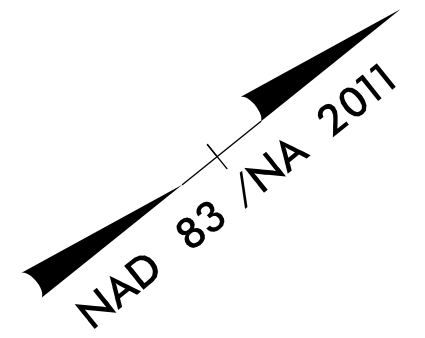
Place Matting for Erosion Control on Slope as Work Allows.
-L- Sta. 23+50 to 27+66 LT

Place Matting for Erosion Control on Slopes Adjacent to Permitted Wetlands as Work Allows.
-L- Sta. 21+00 to 27+66 RT

Place Matting for Erosion Control on Slopes Adjacent to Permitted Wetlands as Work Allows.

-L-
 $PI\ Sta. 16+75.99$
 $\Delta = 18^\circ 43' 30.0'' (LT)$
 $D = 1,237.50.8'$
 $L = 1,339.93'$
 $T = 675.99'$
 $R = 4,100.00'$
 $SE = 0.04$
 $Lr = 200'$

MATCHLINE -L- STA. 27+00.00 SEE SHEET 5



-YI- (EXIST TRACK)
 PI Sta 12+96.20 PI Sta 17+52.33
 $\Delta = 5' 24'' 34.5'' (RT)$ $\Delta = 0' 37'' 28.5'' (RT)$
 $D = 0' 54'' 49.8''$ $D = 0' 11'' 41.0''$
 $L = 591.97'$ $L = 320.73'$
 $T = 296.20'$ $T = 160.37'$
 $R = 6,269.81'$ $R = 29,422.30'$

IN LIEU OF ROCK INLET SEDIMENT TRAP TYPE C,
 UTILIZE FABRIC INSERT INLET PROTECTION
 DEVICES IN AREAS WHERE WATER MAY
 POND ON ROAD OPEN TO LIVE TRAFFIC.

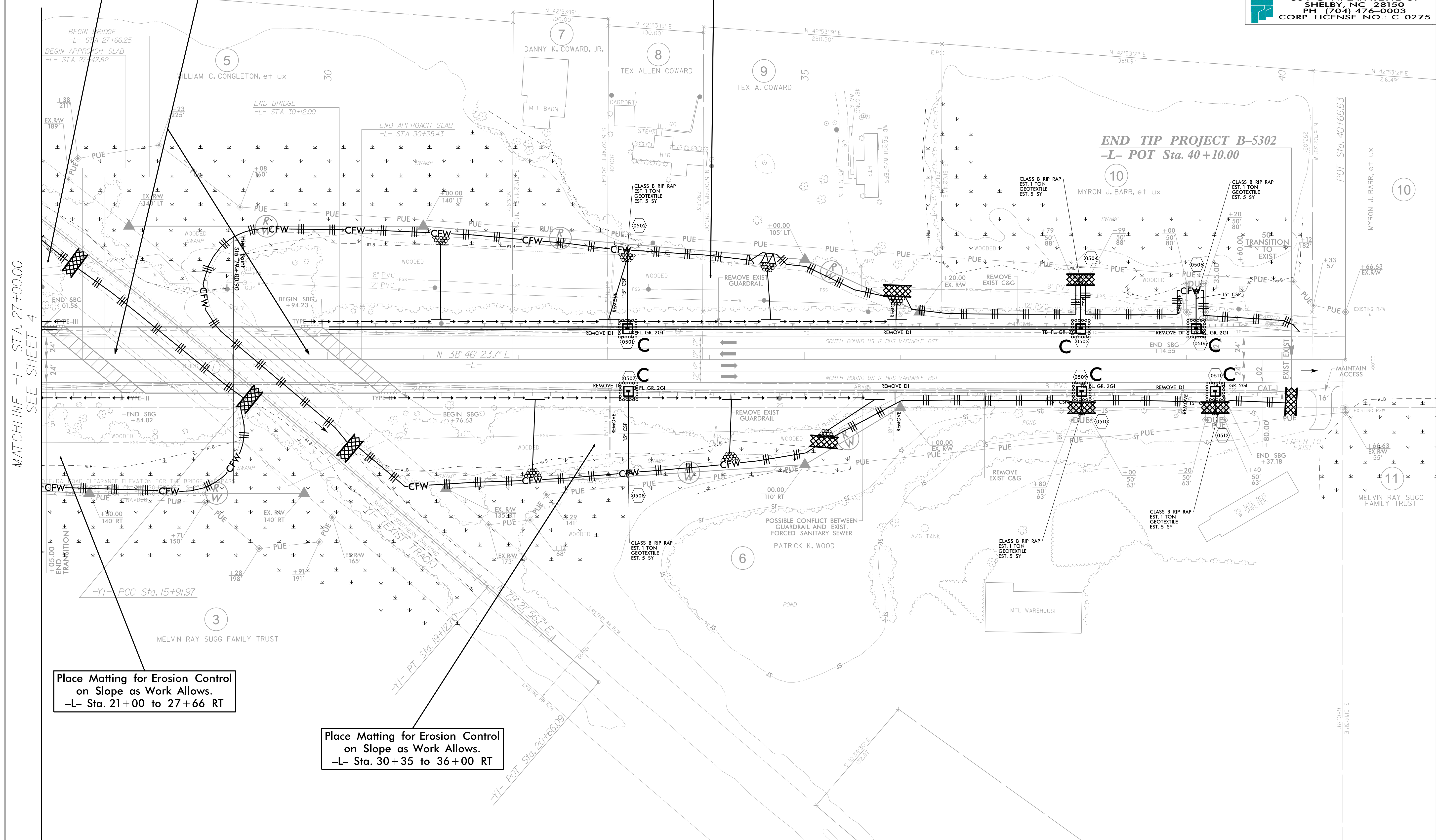
Place Matting for Erosion Control
 on Slope as Work Allows.
 -L- Sta. 23+50 to 27+66 LT

PLACE COIR FIBER MATTING ON
 EXPOSED SOIL UNDER BRIDGE.

Place Matting for Erosion Control
 on Slopes Adjacent to Permitted
 Wetlands as Work Allows.

Place Matting for Erosion Control
 on Slope as Work Allows.
 -L- Sta. 30+35 to 36+50 LT

MATCHLINE -L- STA. 27+00.00
 SEE SHEET 4



Place Matting for Erosion Control
 on Slope as Work Allows.
 -L- Sta. 21+00 to 27+66 RT

Place Matting for Erosion Control
 on Slope as Work Allows.
 -L- Sta. 30+35 to 36+00 RT

END TIP PROJECT B-5302
 -L- POT Sta. 40+10.00