

**This electronic collection of documents is provided
for the convenience of the user
and is Not a Certified Document –**

**The documents contained herein were originally issued
and sealed by the individuals whose names and license
numbers appear on each page, on the dates appearing
with their signature on that page.**

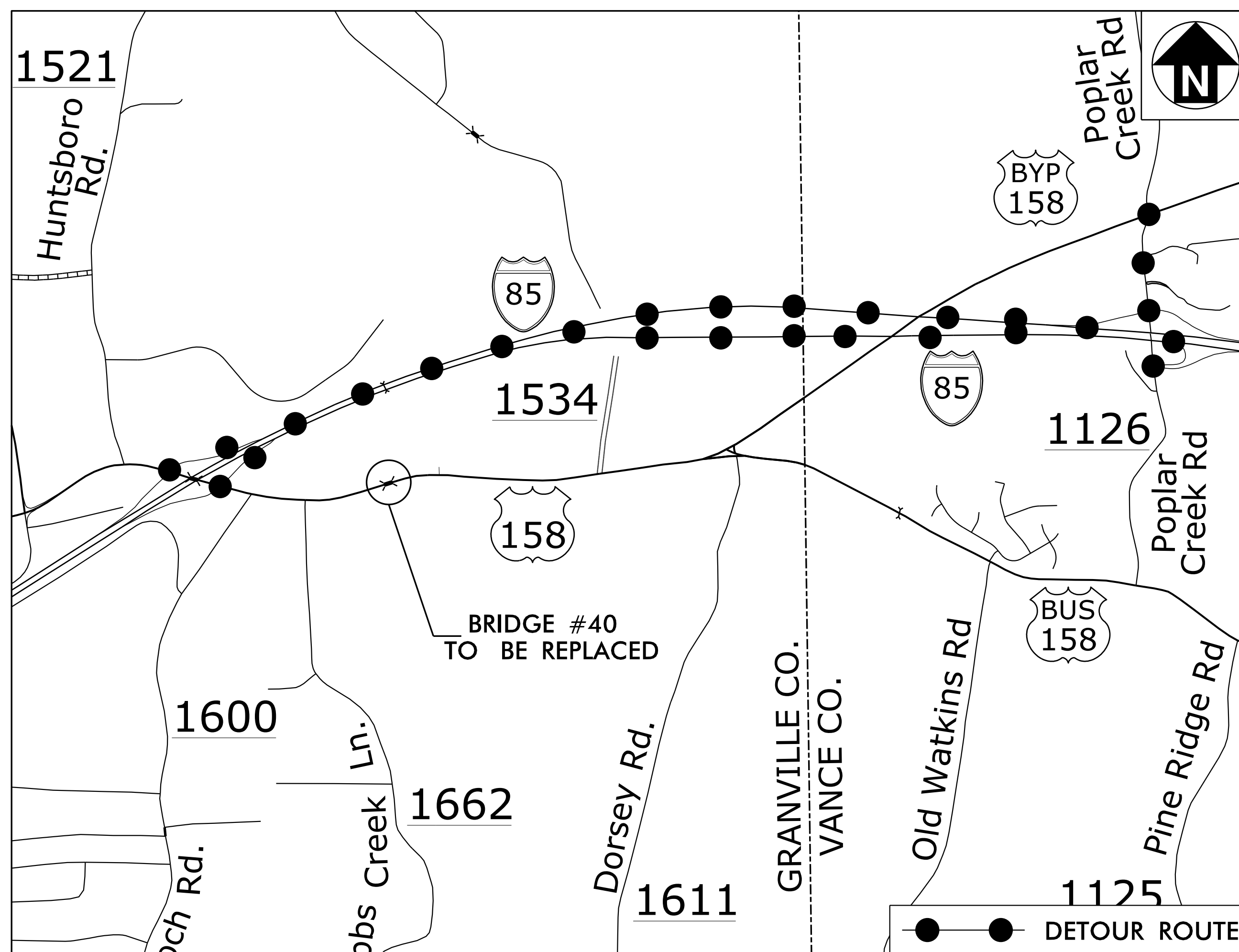
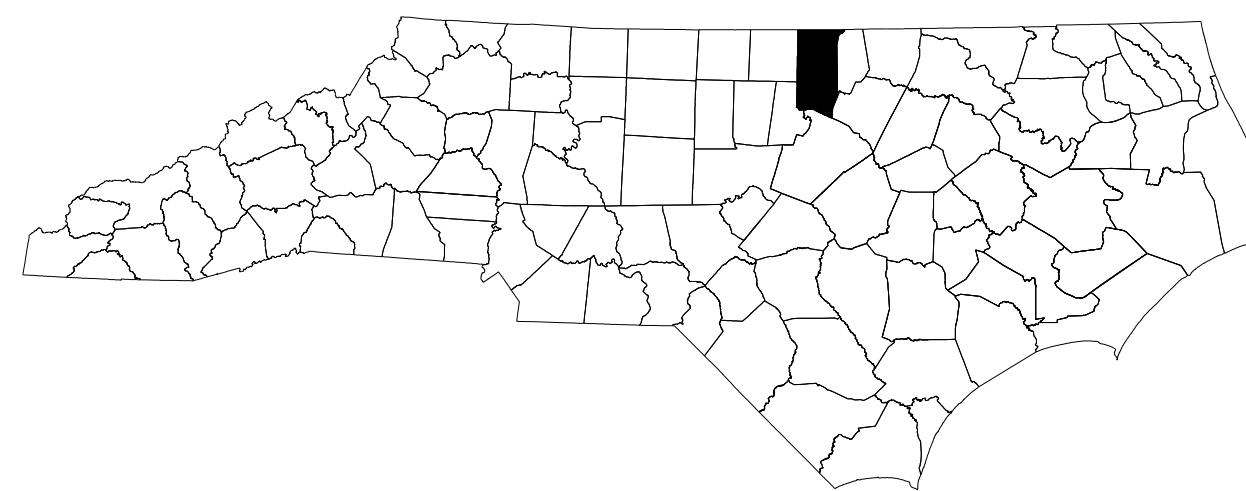
**This file or an individual page
shall not be considered a certified document.**

STATE OF NORTH CAROLINA
DIVISION OF HIGHWAYS

TRANSPORTATION MANAGEMENT PLAN

GRANVILLE COUNTY

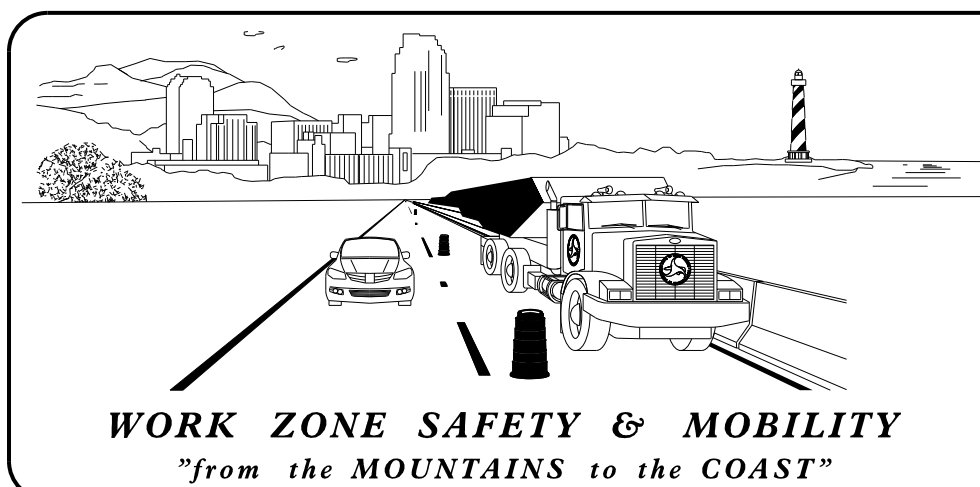
BRIDGE NO. 40 OVER TABB'S CREEK ON US 158 (WILLIAMSBORO ROAD)



INDEX OF SHEETS

SHEET NO.	TITLE
TMP-1	TITLE SHEET AND INDEX OF SHEETS
TMP-2	LIST OF APPLICABLE ROADWAY STANDARD DRAWINGS, LEGEND, GENERAL NOTES, PHASING AND FINAL PAVEMENT MARKING SCHEDULE
TMP-3	TRAFFIC CONTROL TEMPORARY SIGNING AND DEVICES
TMP-4	TRAFFIC CONTROL TEMPORARY SIGNING AND DEVICES
TMP-5	TRAFFIC CONTROL TEMPORARY SIGNING AND DEVICES
TMP-6	TRAFFIC CONTROL TEMPORARY SIGNING AND DEVICES
TMP-7	TRAFFIC CONTROL TEMPORARY SIGNING AND DEVICES

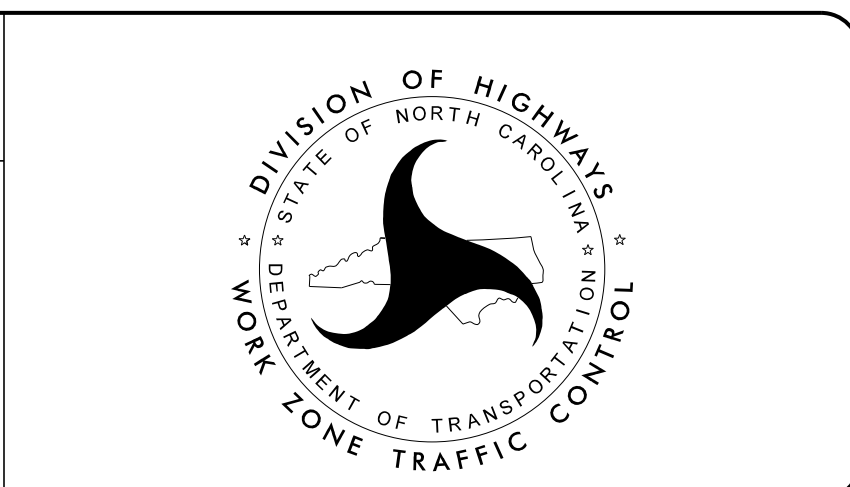
9/11/2018 2:44:11 PM
R:\Roadway\Proj\380040_TC_TMP_TMP-1.dgn
P:\56855



PREPARED IN THE OFFICE OF MOTT MACDONALD
FOR NORTH CAROLINA DEPARTMENT OF TRANSPORTATION

DAVID BISSETTE, PE *TRAFFIC CONTROL PROJECT ENGINEER*

BRIAN PHILLIPS *TRAFFIC CONTROL DESIGN ENGINEER*



M M
MOTT
MACDONALD

P.O. Box 700
Fayetteville, NC 27526
(919) 552-2253
(919) 552-2254 (Fax)
www.mottmac.com/americas

LICENSE NO. F-0669

DOCUMENT NOT CONSIDERED FINAL
UNLESS ALL SIGNATURES COMPLETED

APPROVED: _____
DATE: _____

SEAL

SEAL
030864
ENGINEER
DAVID BISSETTE
01/2018

TIP PROJECT: 17BP.5.R.82

TRAFFIC MANAGEMENT PLAN

GENERAL NOTES

CHANGES MAY BE REQUIRED WHEN PHYSICAL DIMENSIONS IN THE DETAIL DRAWINGS, STANDARD DETAILS, AND ROADWAY DETAILS ARE NOT ATTAINABLE TO MEET FIELD CONDITIONS OR RESULT IN DUPLICATE OR UNDESIRED OVERLAPPING OF DEVICES. MODIFICATION MAY INCLUDE: MOVING, SUPPLEMENTING, COVERING, OR REMOVAL OF DEVICES AS DIRECTED BY THE ENGINEER.

THE FOLLOWING GENERAL NOTES APPLY AT ALL TIMES FOR THE DURATION OF THE CONSTRUCTION PROJECT EXCEPT WHEN OTHERWISE NOTED IN THE PLAN OR DIRECTED BY THE ENGINEER.

LANE AND SHOULDER CLOSURE REQUIREMENTS

- A) WHEN PERSONNEL AND/OR EQUIPMENT ARE WORKING WITHIN 15 FT OF AN OPEN TRAVEL LANE, CLOSE THE NEAREST OPEN SHOULDER USING ROADWAY STANDARD DRAWING NO. 1101.04 UNLESS THE WORK AREA IS PROTECTED BY BARRIER OR GUARDRAIL OR A LANE CLOSURE IS INSTALLED.

TRAFFIC PATTERN ALTERATIONS

- B) NOTIFY THE ENGINEER AND LOCAL SCHOOLS & EMS THIRTY (30) CALENDAR DAYS PRIOR TO ANY TRAFFIC PATTERN ALTERATION.

SIGNING

- C) PROVIDE SIGNING AND DEVICES REQUIRED TO CLOSE THE ROAD ACCORDING TO THE ROADWAY STANDARD DRAWINGS AND TRAFFIC CONTROL PLANS.

PROVIDE SIGNING REQUIRED FOR THE OFF-SITE DETOUR ROUTE AS SHOWN IN THE TRAFFIC CONTROL PLANS.

- D) COVER OR REMOVE ALL SIGNS AND DEVICES REQUIRED TO CLOSE THE ROAD WHEN ROAD CLOSURE IS NOT IN OPERATION.

COVER OR REMOVE ALL SIGNS REQUIRED FOR THE OFF-SITE DETOUR WHEN THE DETOUR IS NOT IN OPERATION.

- E) ENSURE ALL NECESSARY SIGNING IS IN PLACE PRIOR TO ALTERING ANY TRAFFIC PATTERN.

TRAFFIC CONTROL DEVICES

- F) PLACE TYPE III BARRICADES, WITH "ROAD CLOSED" SIGN R11-2 ATTACHED, OF SUFFICIENT LENGTH TO CLOSE ENTIRE ROADWAY.

PAVEMENT MARKINGS AND MARKERS

- G) INSTALL PAVEMENT MARKINGS AND MARKERS ON THE FINAL SURFACE ACCORDING TO THE ROADWAY STANDARD DRAWINGS.

- H) TIE PROPOSED PAVEMENT MARKING LINES TO EXISTING PAVEMENT MARKING LINES.

MISCELLANEOUS

- I) MAINTAIN ACCESS TO ALL RESIDENCES AND BUSINESSES BETWEEN THE CLOSURE POINTS AT ALL TIMES DURING CONSTRUCTION.

NCDOT ROADWAY STANDARD DRAWINGS

THE FOLLOWING ROADWAY STANDARDS AS APPEAR IN "ROADWAY STANDARD DRAWINGS" - HIGHWAY DESIGN BRANCH- N.C. DEPARTMENT OF TRANSPORTATION - RALEIGH, N.C., DATED JANUARY 2018 ARE APPLICABLE TO THIS PROJECT AND BY REFERENCE HEREBY ARE CONSIDERED A PART OF THESE PLANS:

STD. NO.	TITLE
1101.03	TEMPORARY ROAD CLOSURES
1101.04	TEMPORARY SHOULDER CLOSURES
1101.11	TRAFFIC CONTROL DESIGN TABLES
1110.01	STATIONARY WORK ZONE SIGNS
1110.02	PORTABLE WORK ZONE SIGNS
1135.01	CONES
1145.01	BARRICADES
1205.01	PAVEMENT MARKINGS - LINE TYPES AND OFFSETS
1205.02	PAVEMENT MARKINGS - TWO-LANE AND MULTI-LANE ROADWAYS
1205.12	PAVEMENT MARKINGS - BRIDGES
1250.01	RAISED PAVEMENT MARKERS - INSTALLATION SPACING
1253.01	RAISED PAVEMENT MARKERS - SNOWPLOWABLE
1261.01	GUARDRAIL AND BARRIER DELINEATORS - INSTALLATION SPACING
1261.02	GUARDRAIL AND BARRIER DELINEATORS - TYPES AND MOUNTING
1262.01	GUARDRAIL END DELINEATION

PHASING

- STEP 1 USING RSD 1101.03 SHEET 1 OF 9 AS NEEDED CLOSE WILLIAMSBORO ROAD (US 158) AND DETOUR TRAFFIC OFF-SITE AS SHOWN ON SHEETS TMP-3 THROUGH TMP-7. MAINTAIN ACCESS TO ALL RESIDENCES AND BUSINESSES BETWEEN CLOSURE POINTS.
- STEP 2 PERFORM THE FOLLOWING WITHIN THE ROAD CLOSURE:
 - REMOVE THE EXISTING STRUCTURE
 - CONSTRUCT THE PROPOSED STRUCTURE AND ROADWAY
 - PLACE FINAL PAVEMENT MARKINGS AND MARKERS
- STEP 3 OPEN WILLIAMSBORO ROAD (US 158) TO TRAFFIC AND REMOVE ALL TRAFFIC CONTROL DEVICES.

FINAL PAVEMENT MARKING SCHEDULE

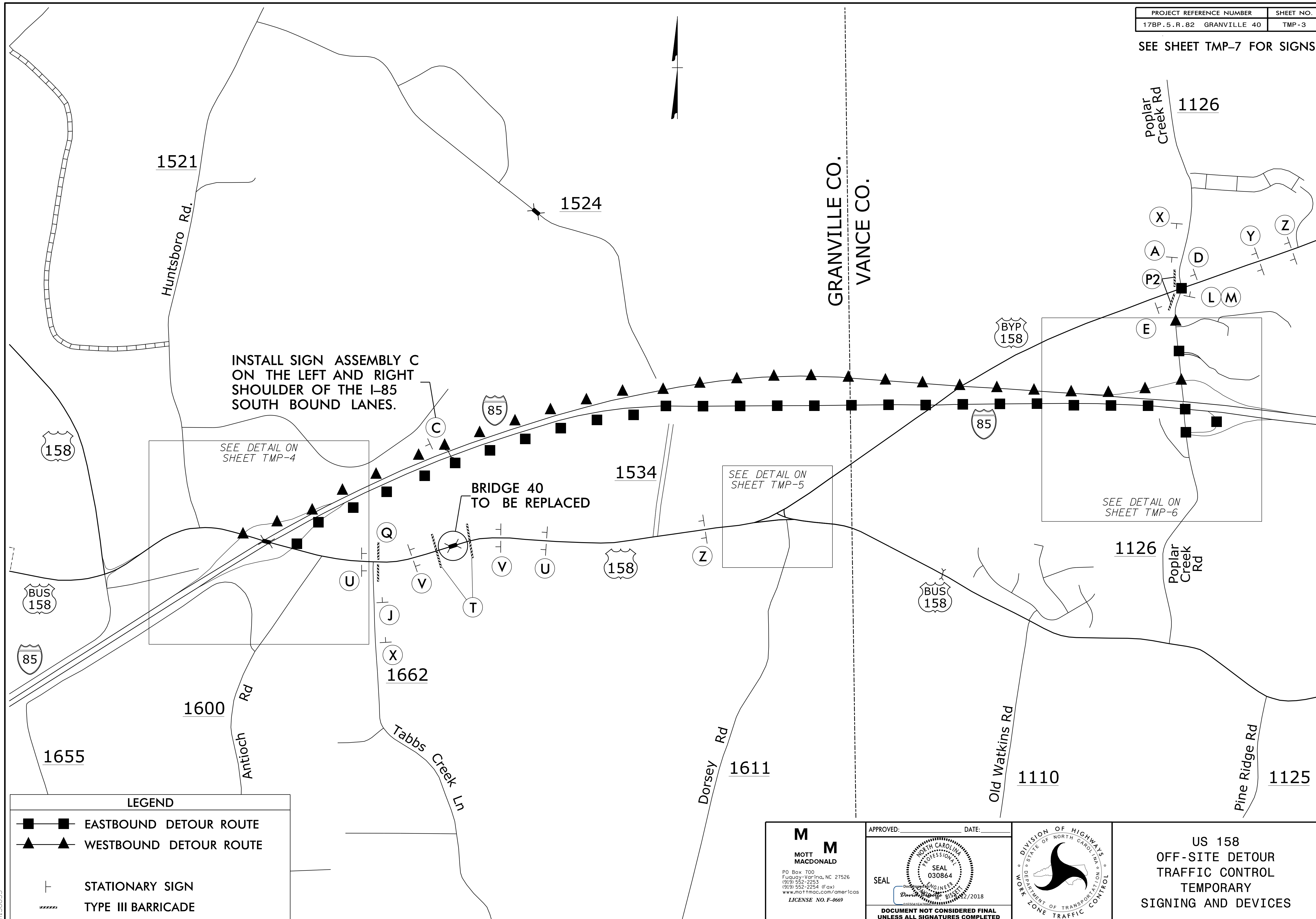
DESCRIPTION	QUANTITY
THERMOPLASTIC WHITE EDGELINE (4")	1,200 LF
THERMOPLASTIC YELLOW DOUBLE CENTER (4")	1,200 LF
SNOWPLOWABLE PAVEMENT MARKERS (YELLOW & YELLOW)	8 EA

9/11/2018 2:44:15 PM
 R:\Roadway\Proj\380040_TC_TMP-2.dgn
 Plot: 56855

<p style="text-align: center; font-size: 2em; font-weight: bold;">M M</p> <p style="text-align: center; font-weight: bold;">MOTT MACDONALD</p> <p style="font-size: 0.8em;"> PO Box 100 Fuquay-Varina, NC 27526 (919) 552-2253 (919) 552-2254 (Fax) www.mottmac.com/americas LICENSE NO. F-0669 </p>	<p>APPROVED: _____ DATE: _____</p> <div style="text-align: center;"> </div> <p style="font-size: 0.8em; text-align: center;">DOCUMENT NOT CONSIDERED FINAL UNLESS ALL SIGNATURES COMPLETED</p>	<p style="font-size: 0.8em;"> DIVISION OF HIGHWAYS STATE OF NORTH CAROLINA DEPARTMENT OF TRANSPORTATION WORK ZONE TRAFFIC CONTROL </p>	<p>GENERAL NOTES ROADWAY STANDARD DRAWINGS PHASING PAVEMENT MARKING SCHEDULE</p>
---	--	---	--

PROJECT REFERENCE NUMBER	SHEET NO.
17BP.5.R.82 GRANVILLE 40	TMP-3

SEE SHEET TMP-7 FOR SIGNS

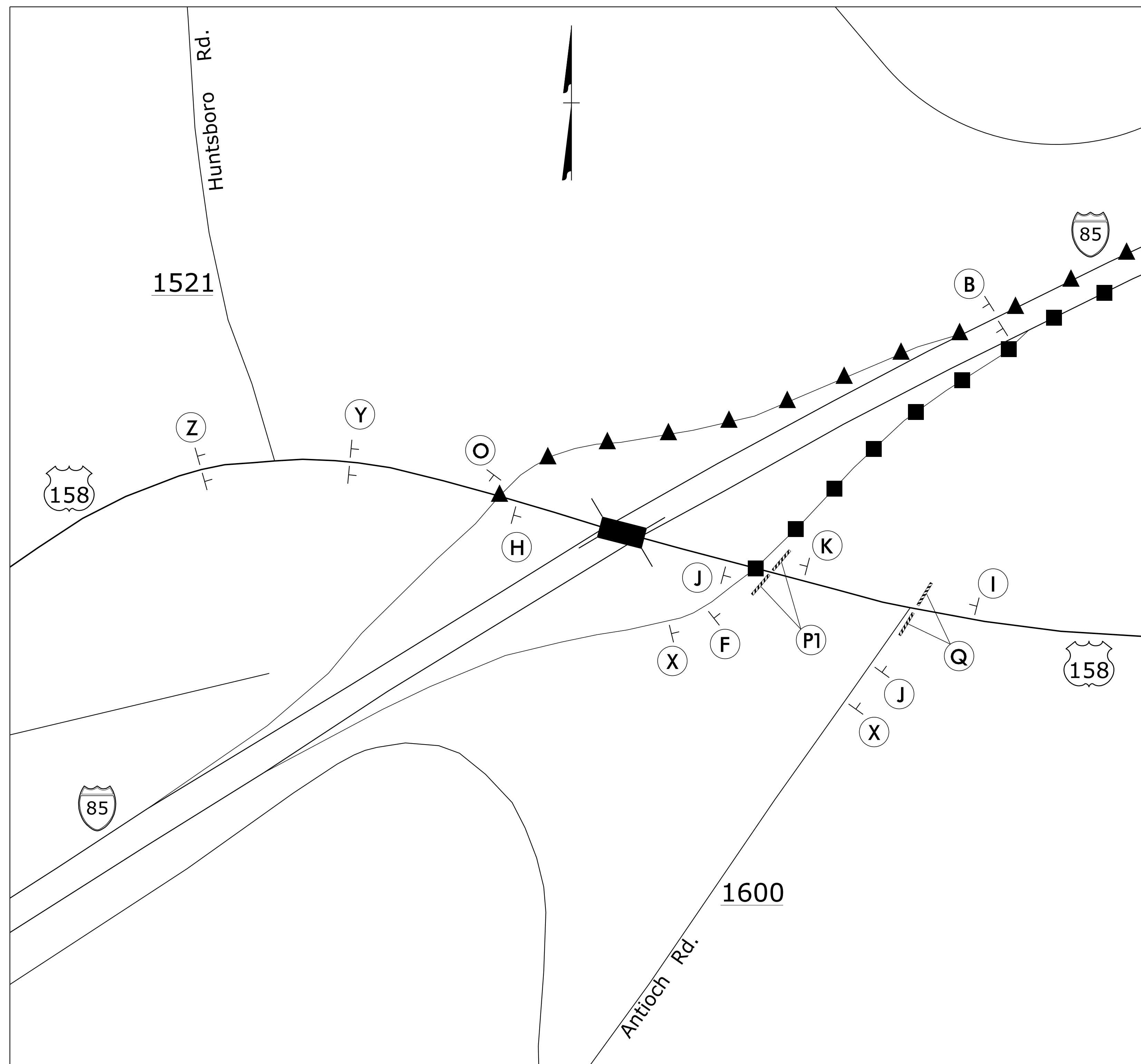


LEGEND	
	EASTBOUND DETOUR ROUTE
	WESTBOUND DETOUR ROUTE
	STATIONARY SIGN
	TYPE III BARRICADE

9/11/2018 2:44:18 PM
 R:\Roadway\Proj\380040_TC_TMP_3.dgn
 P:\56855

M M MOTT MACDONALD <small>PO Box 100 Fuquay-Varina, NC 27526 (919) 552-2253 (919) 552-2254 (Fax) www.mottmac.com/america LICENSE NO. F-0669</small>	APPROVED: _____ DATE: _____ 		US 158 OFF-SITE DETOUR TRAFFIC CONTROL TEMPORARY SIGNING AND DEVICES
	DOCUMENT NOT CONSIDERED FINAL UNLESS ALL SIGNATURES COMPLETED		

SEE SHEET TMP-7 FOR SIGNS

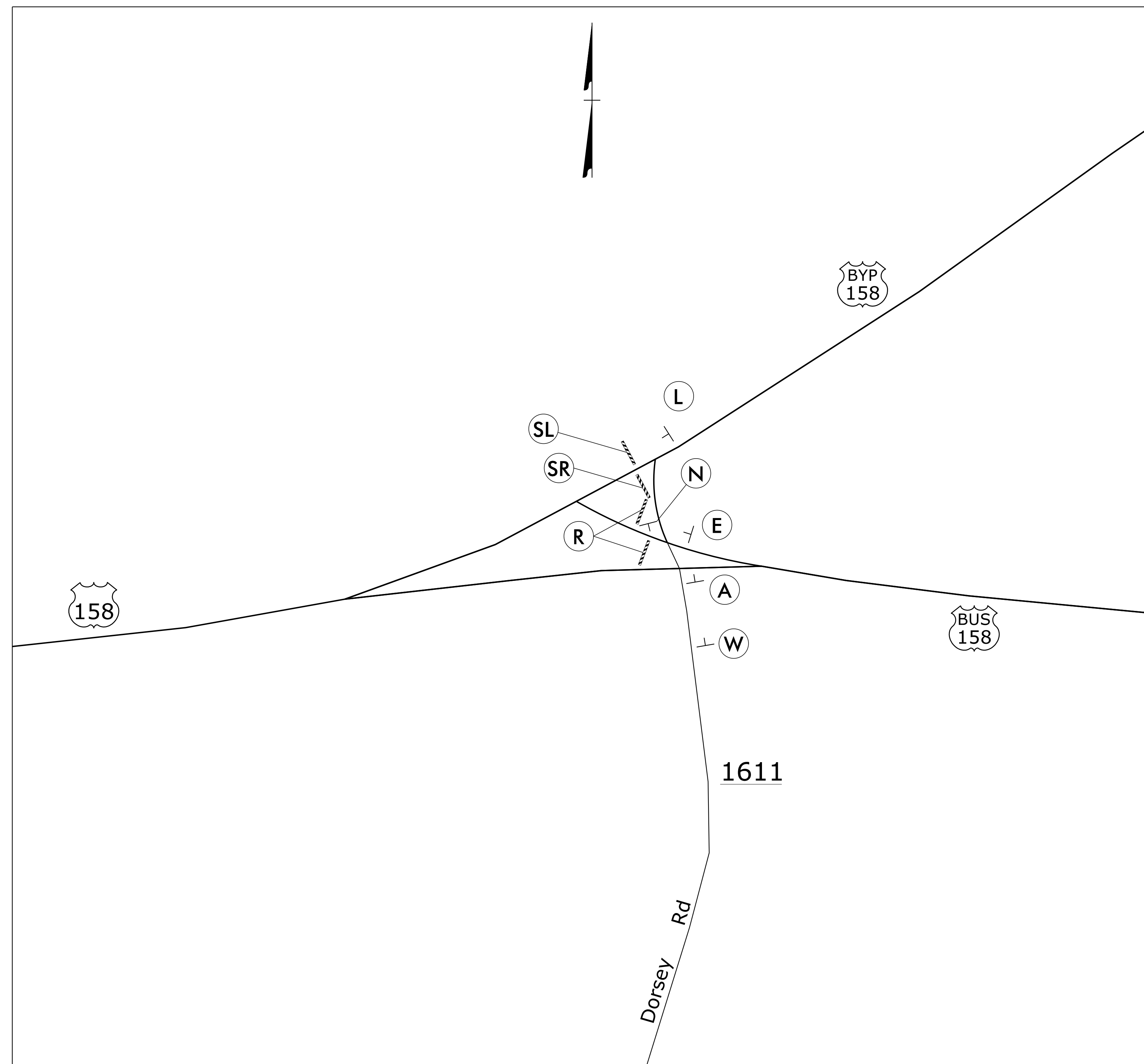


LEGEND	
	EASTBOUND DETOUR ROUTE
	WESTBOUND DETOUR ROUTE
	STATIONARY SIGN
	TYPE III BARRICADE

9/11/2018 2:44:21 PM
 R:\Roadway\Proj\380040_TC_TMP-4.dgn
 P:\56855

<p>M M MOTT MACDONALD PO Box 100 Fuquay-Varina, NC 27526 (919) 552-2253 (919) 552-2254 (Fax) www.mottmac.com/americas LICENSE NO. F-0669</p>	APPROVED: _____ DATE: _____			<p align="center"> US 158 OFF-SITE DETOUR TRAFFIC CONTROL TEMPORARY SIGNING AND DEVICES </p>
	<p align="center"> SEAL DOCUMENT NOT CONSIDERED FINAL UNLESS ALL SIGNATURES COMPLETED </p>			

SEE SHEET TMP-7 FOR SIGNS



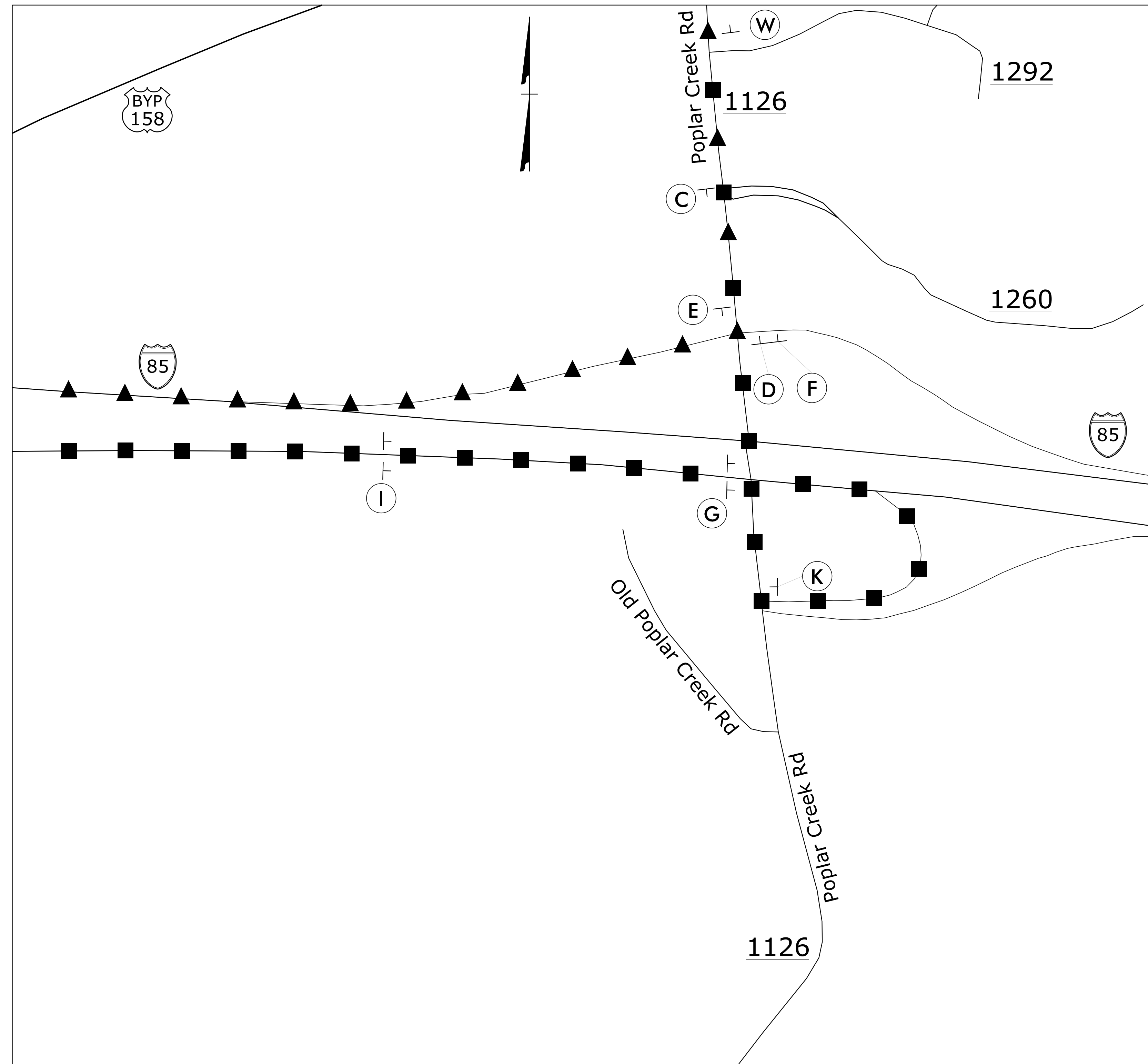
LEGEND

- EASTBOUND DETOUR ROUTE
- WESTBOUND DETOUR ROUTE
- STATIONARY SIGN
- TYPE III BARRICADE

9/11/2018 2:44:24 PM
 R:\Roadway\Proj\380040_TC_TMP-5.dgn
 P:\56855

<p>M M</p> <p>MOTT MACDONALD</p> <p>PO Box 100 Fuquay-Varina, NC 27526 (919) 552-2253 (919) 552-2254 (Fax) www.mottmac.com/americas LICENSE NO. F-0669</p>	APPROVED: _____ DATE: _____			<p align="center">US 158 OFF-SITE DETOUR TRAFFIC CONTROL TEMPORARY SIGNING AND DEVICES</p>
	<p align="center">DOCUMENT NOT CONSIDERED FINAL UNLESS ALL SIGNATURES COMPLETED</p>			

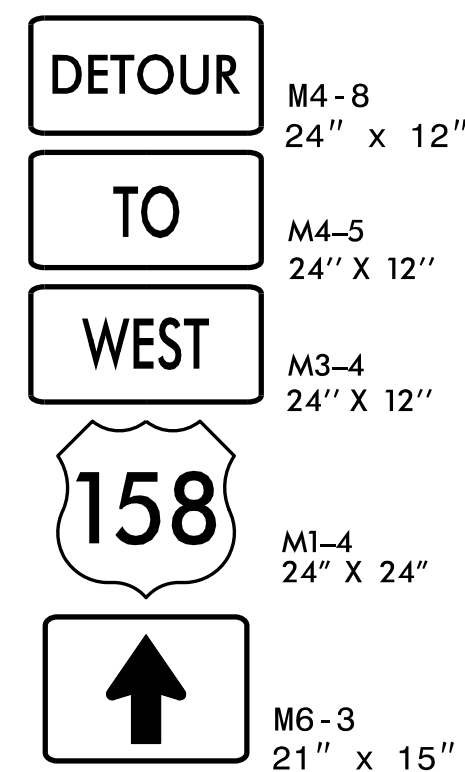
SEE SHEET TMP-7 FOR SIGNS



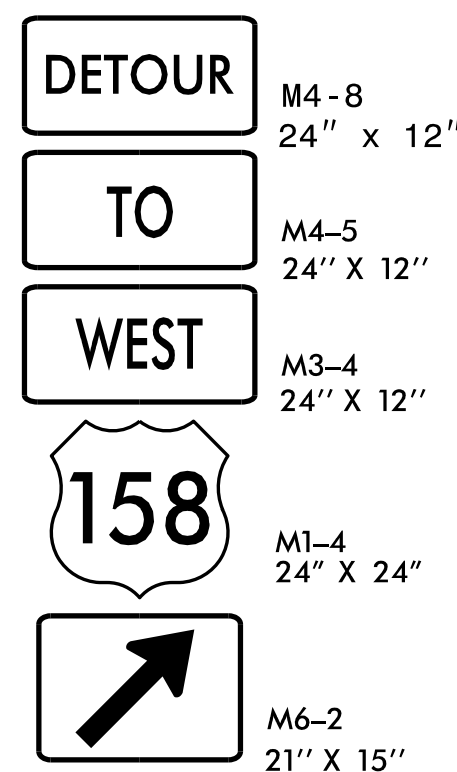
LEGEND	
	EASTBOUND DETOUR ROUTE
	WESTBOUND DETOUR ROUTE
	COMMON DETOUR ROUTE
	STATIONARY SIGN
	TYPE III BARRICADE

9/11/2018 2:44:27 PM
 R:\Roadway\Proj\380040\TC_TMP_6.dgn
 P:\56855

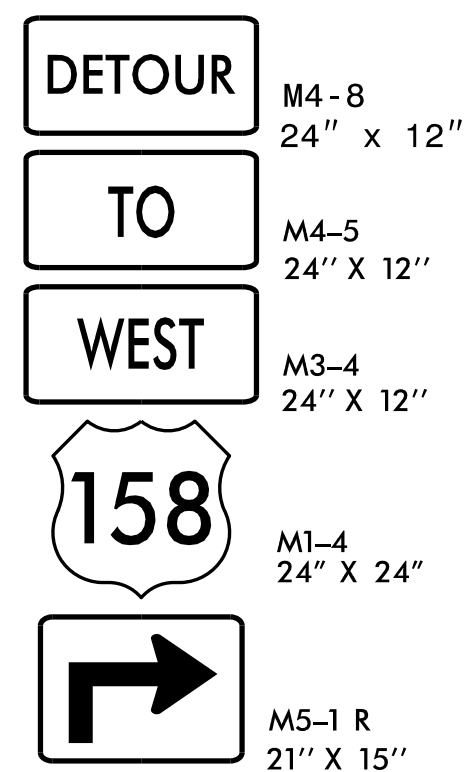
M M MOTT MACDONALD PO Box 100 Fuquay-Varina, NC 27526 (919) 552-2253 (919) 552-2254 (Fax) www.mottmac.com/americas LICENSE NO. F-0669	APPROVED: _____ DATE: _____ 		US 158 OFF-SITE DETOUR TRAFFIC CONTROL TEMPORARY SIGNING AND DEVICES
	DOCUMENT NOT CONSIDERED FINAL UNLESS ALL SIGNATURES COMPLETED		



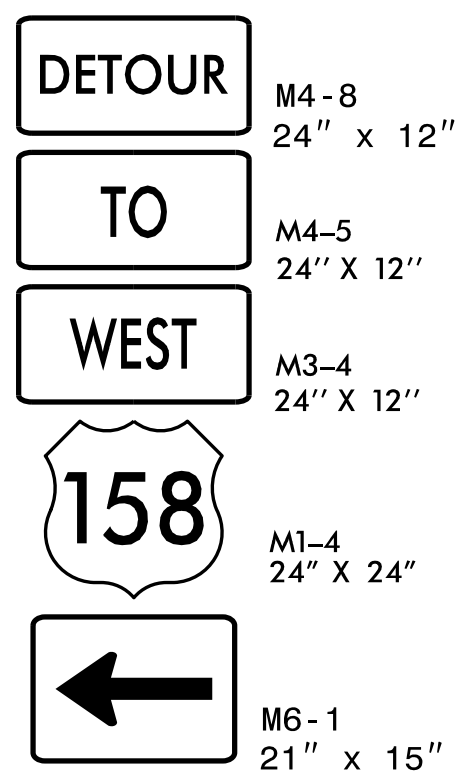
A



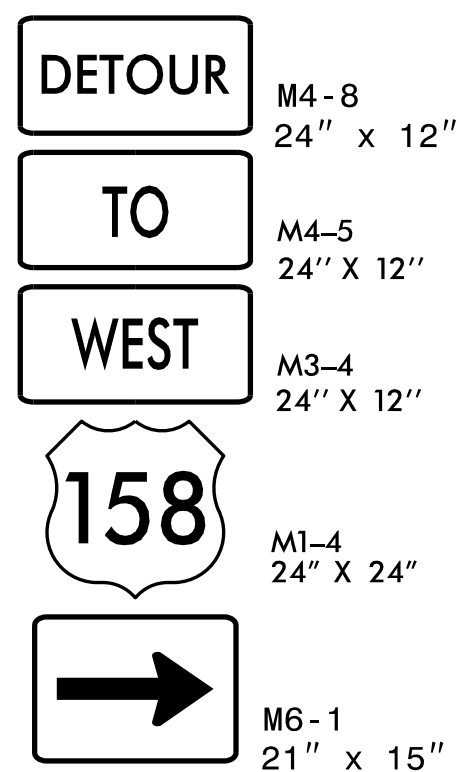
B



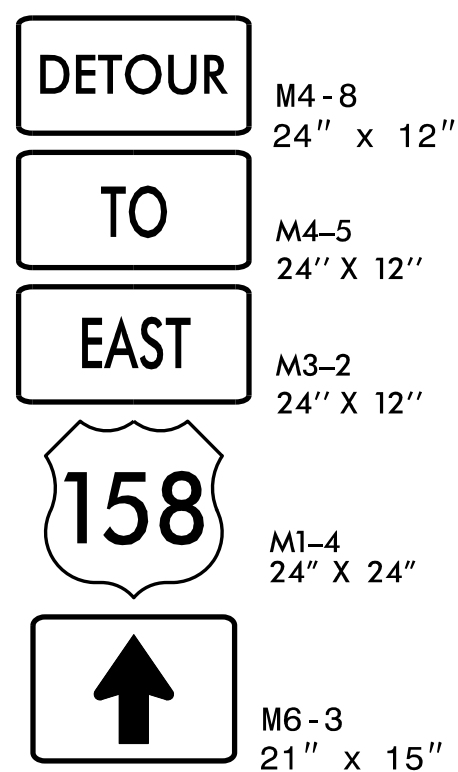
C



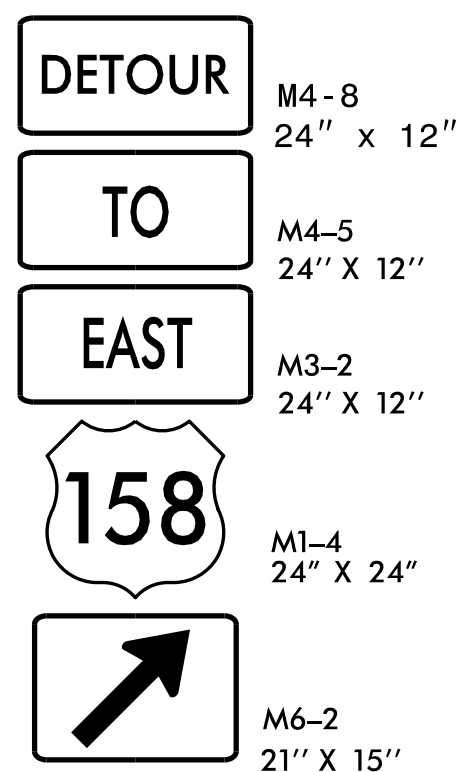
D



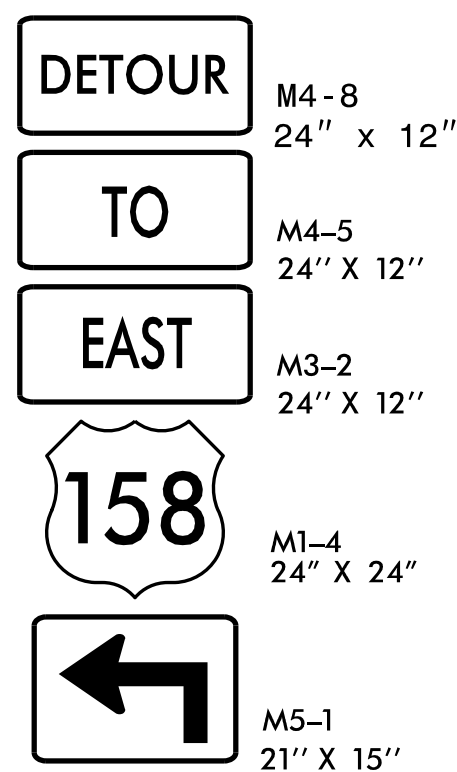
E



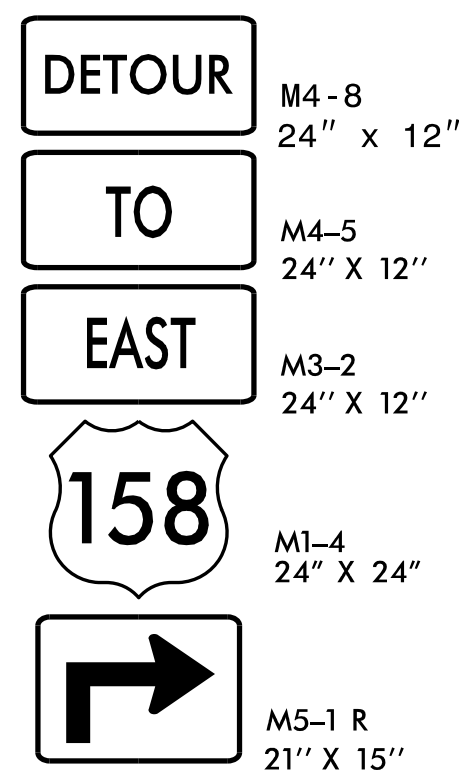
F



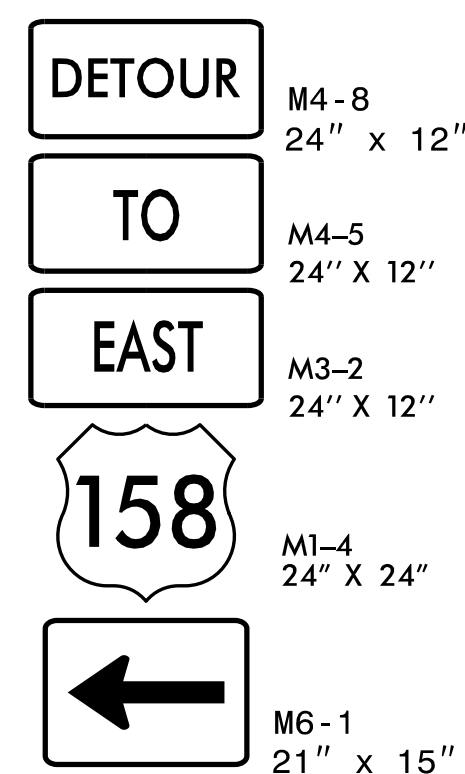
G



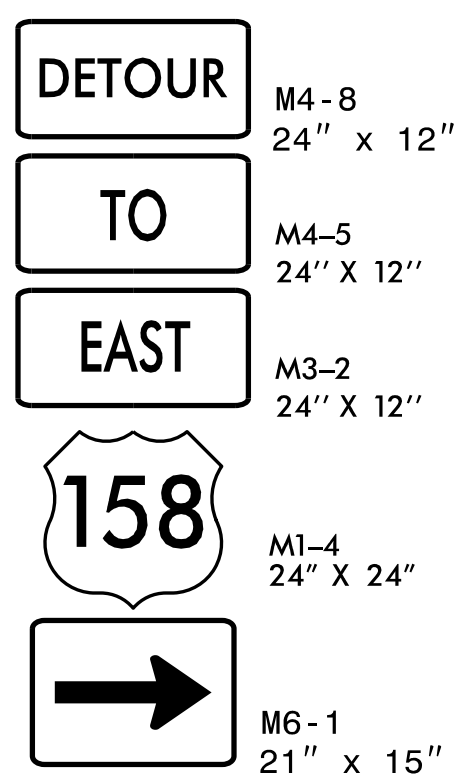
H



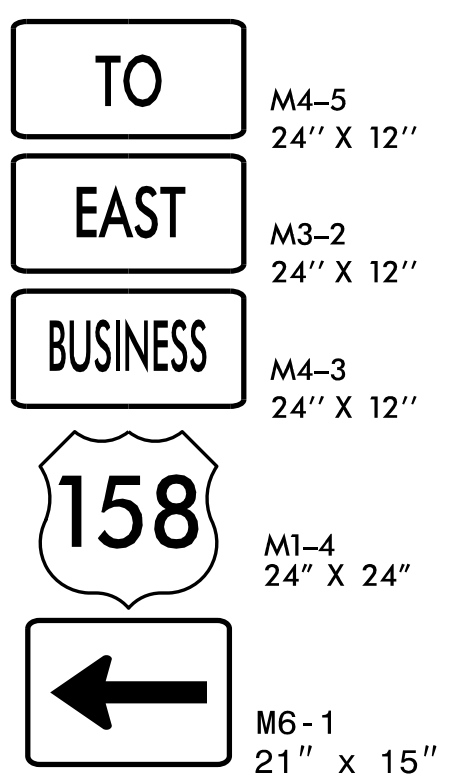
I



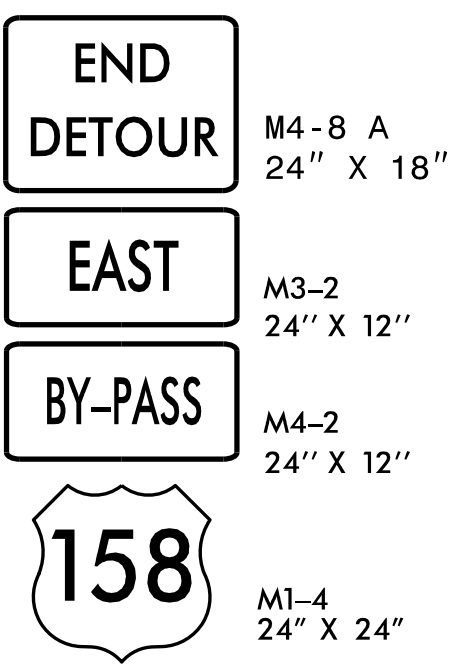
J



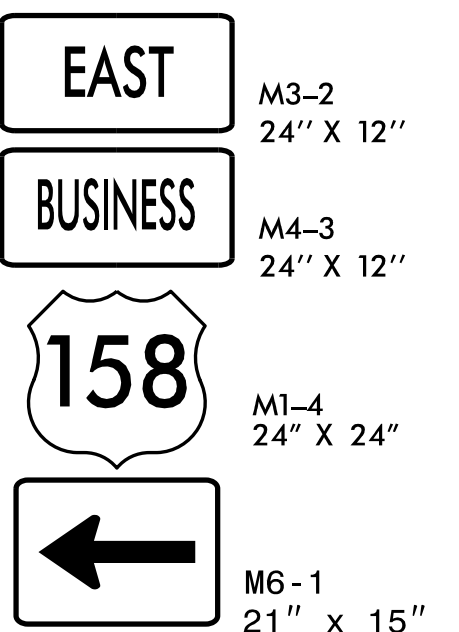
K



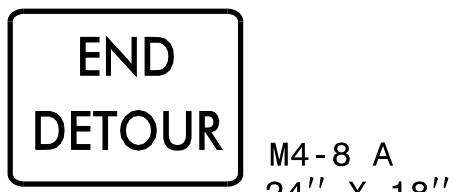
L



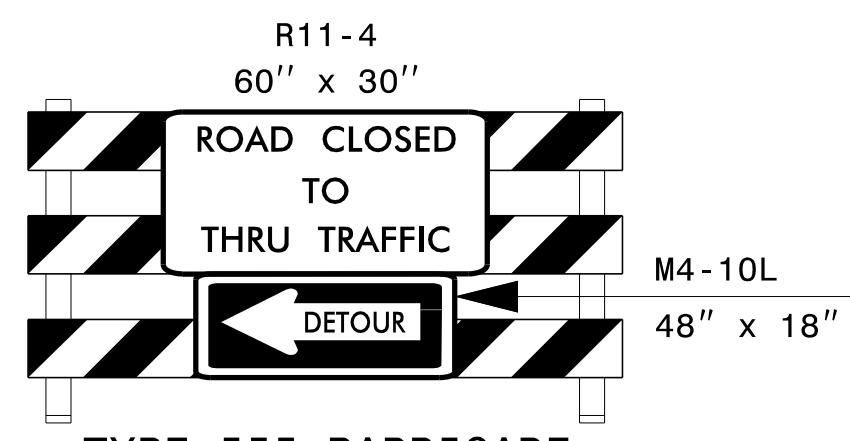
M



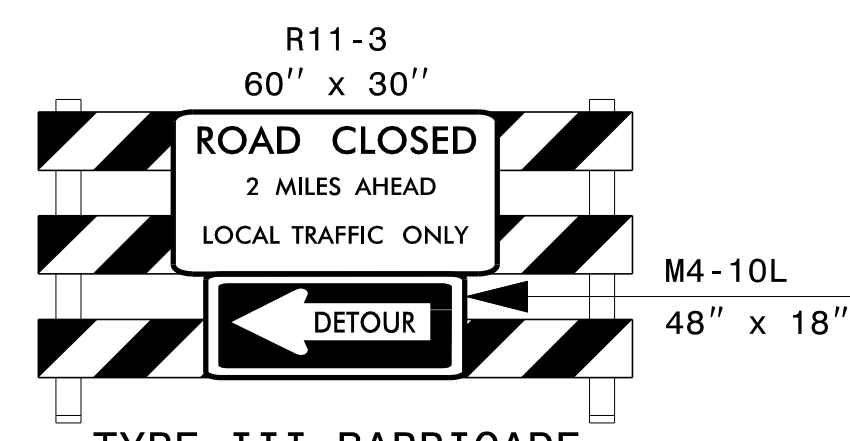
N



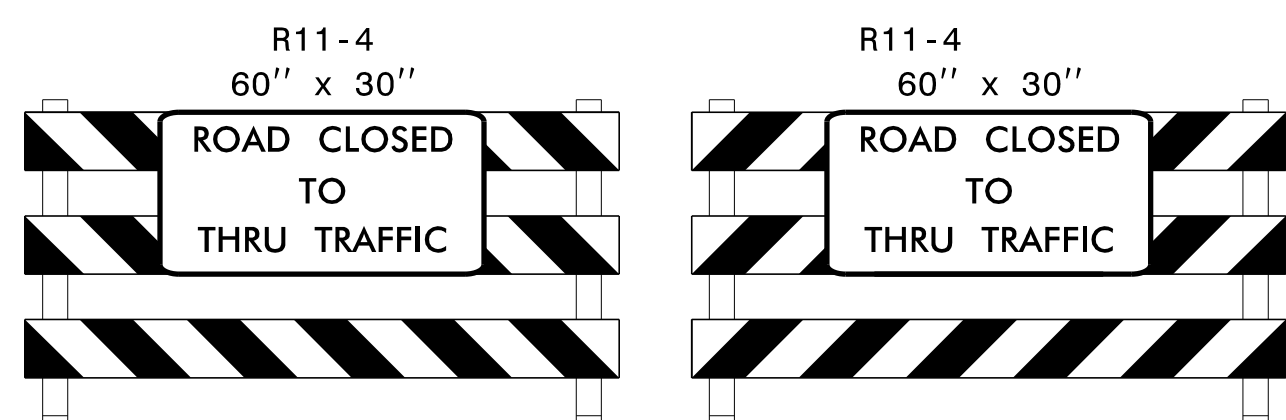
O



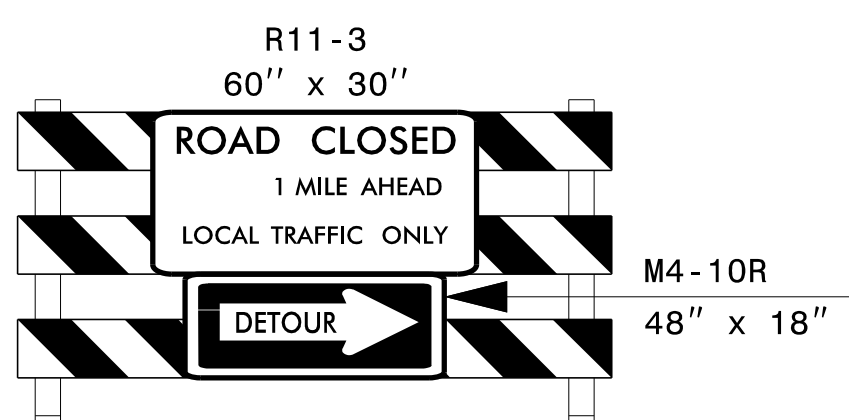
P1



P2



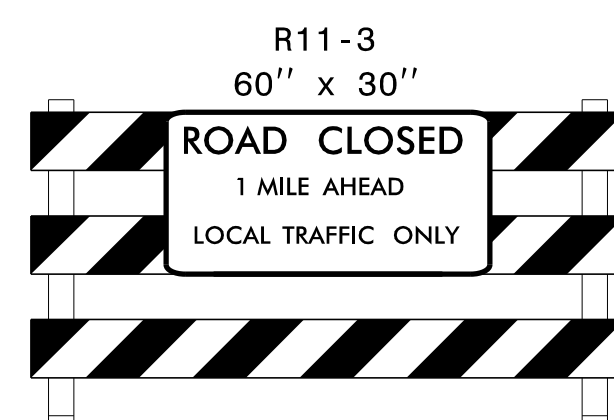
Q



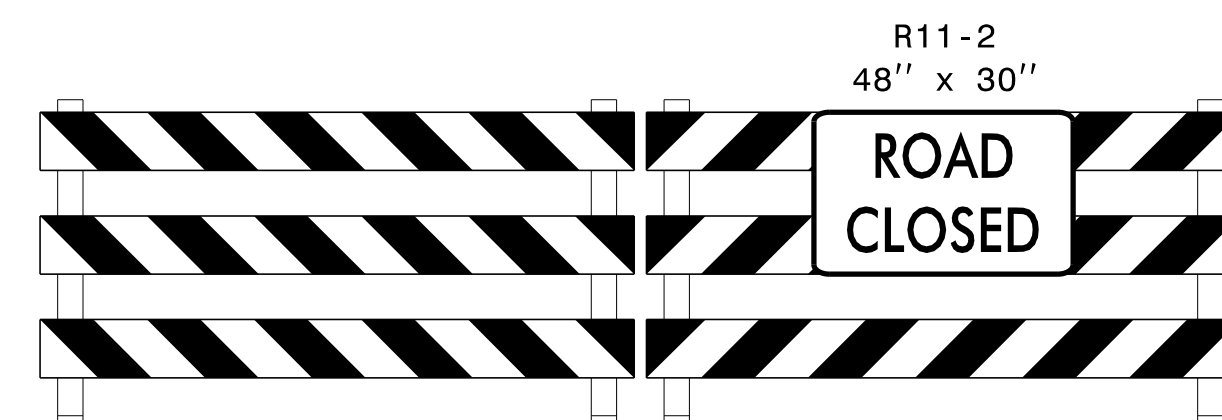
R



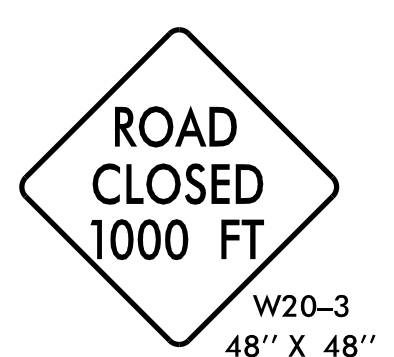
SR



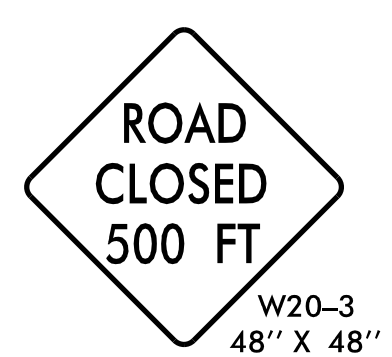
SL



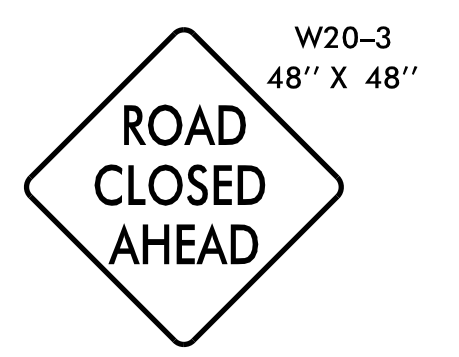
T



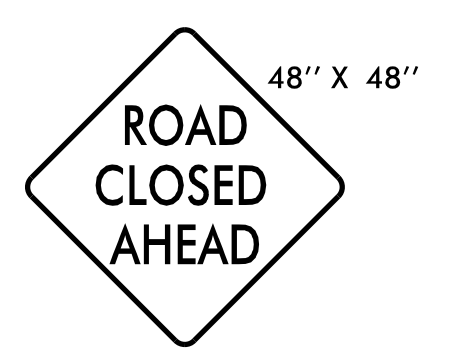
U



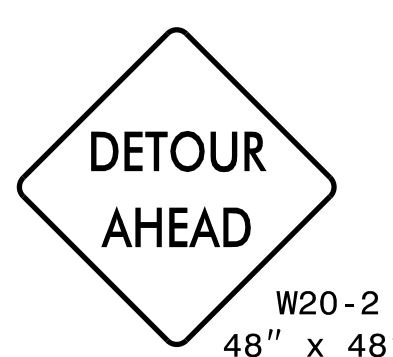
V



W



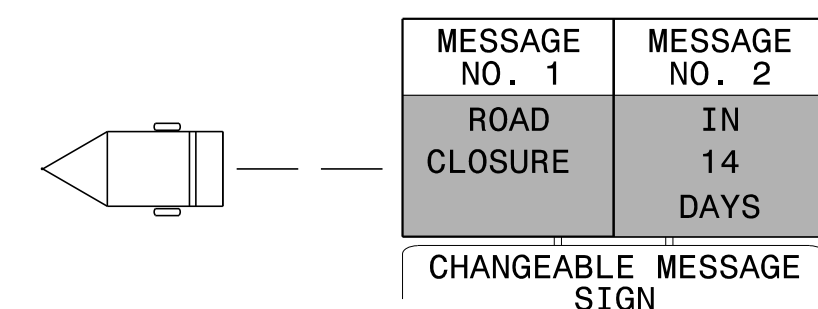
X



Y



Z



USE CHANGEABLE MESSAGE SIGNS FOR A 14-DAY COUNTDOWN ROAD CLOSURE NOTICE PRIOR TO CLOSING US 158 TO THRU TRAFFIC.

INSTALL CHANGEABLE MESSAGE SIGNS AT THE DETOUR POINTS AND AS DIRECTED BY THE ENGINEER.

9/11/2018 2:44:30 PM R:\Roadway\Proj\380040_TC_TMP_7.dgn P:\56855

NOTES: REFER TO ROADWAY STANDARD DRAWING NO. 1101.03, SHEETS 1 AND 2 OF 9, FOR ADDITIONAL SIGN SPACING REQUIREMENTS APPROACHING PROJECT SITE CLOSURE POINT.

M M MOTT MACDONALD <small>PO Box 100 Fuquay-Varina, NC 27526 (919) 552-2253 (919) 552-2254 (Fax) www.mottmac.com/americas LICENSE NO. F-0669</small>	APPROVED: _____ DATE: _____			NC 158 OFF-SITE DETOUR TRAFFIC CONTROL TEMPORARY SIGNING AND DEVICES
	SEAL DOCUMENT NOT CONSIDERED FINAL UNLESS ALL SIGNATURES COMPLETED			