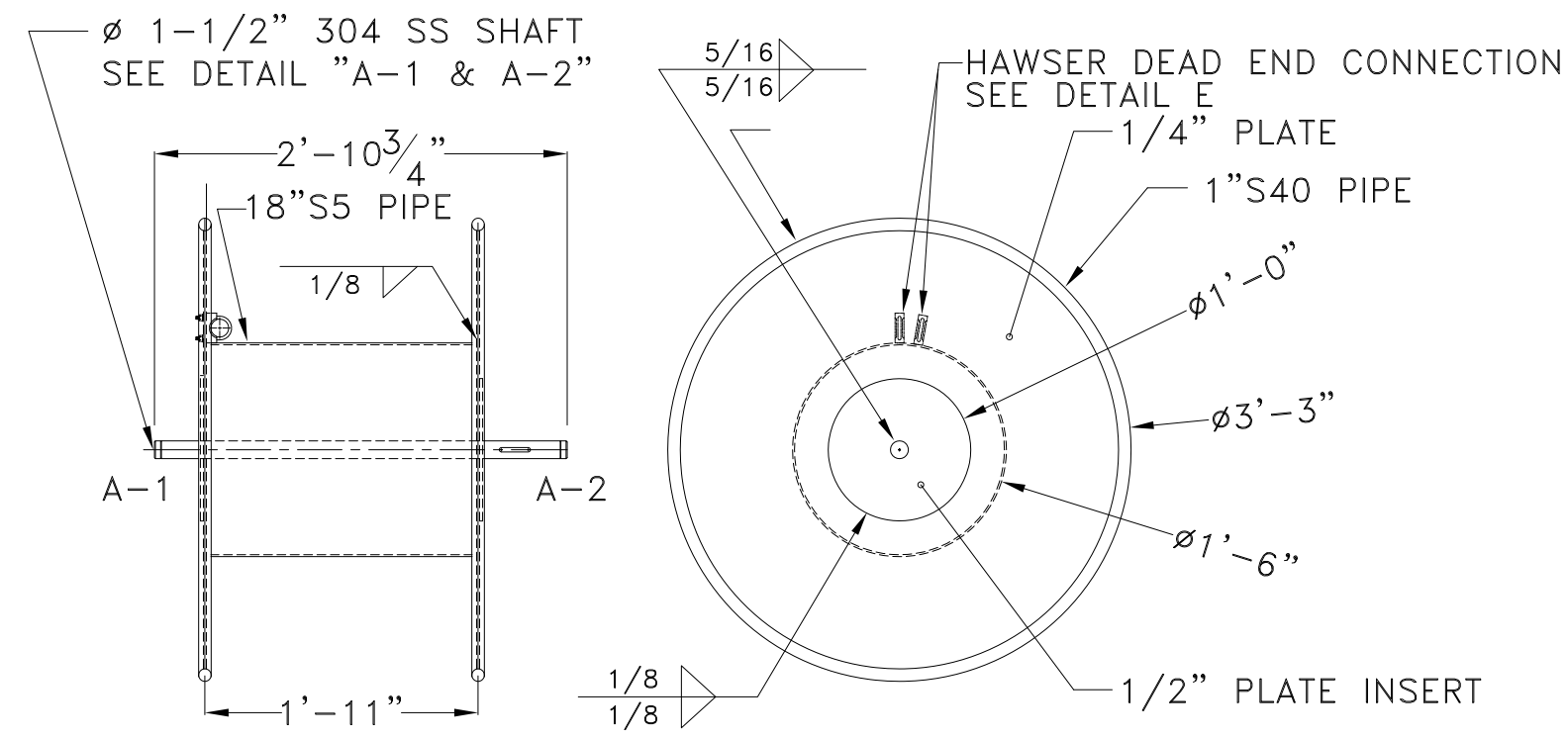
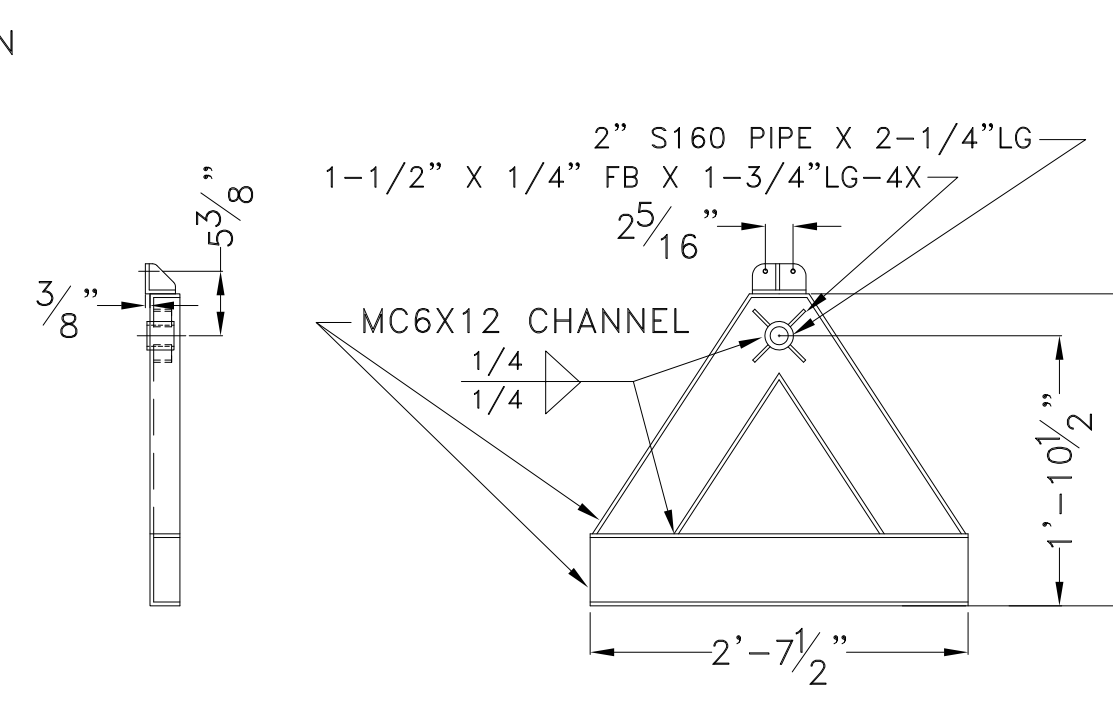


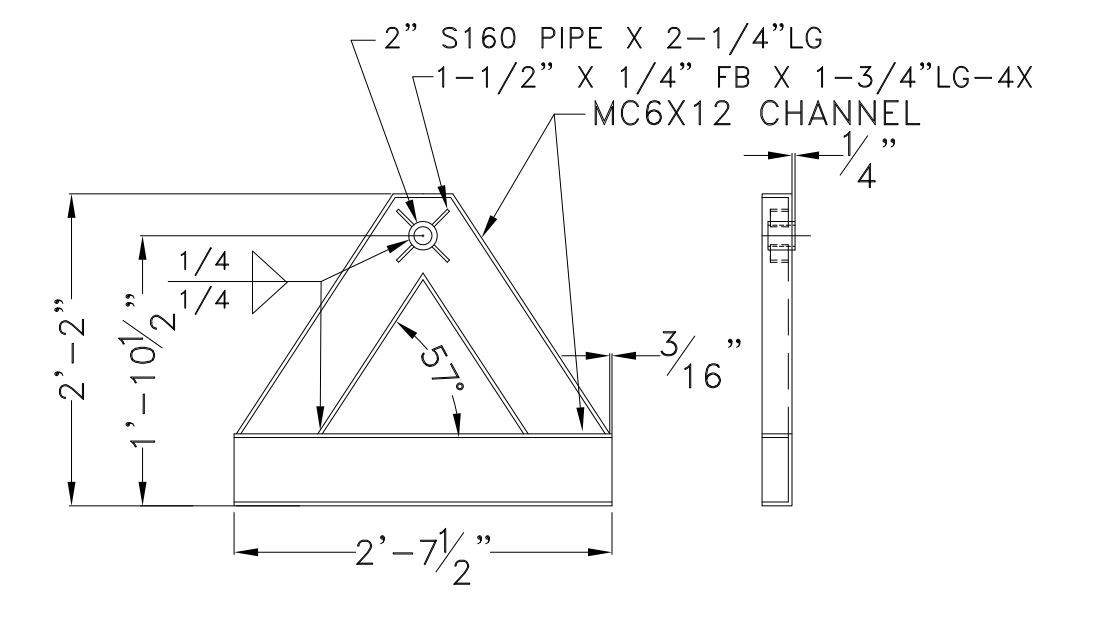
**1 HAWSER REEL ASSEMBLY**  
 MATERIAL : A36 STEEL, ASTM A53 PIPE,  
 UNLESS OTHERWISE NOTED  
 SCALE: 3/4" = 1'



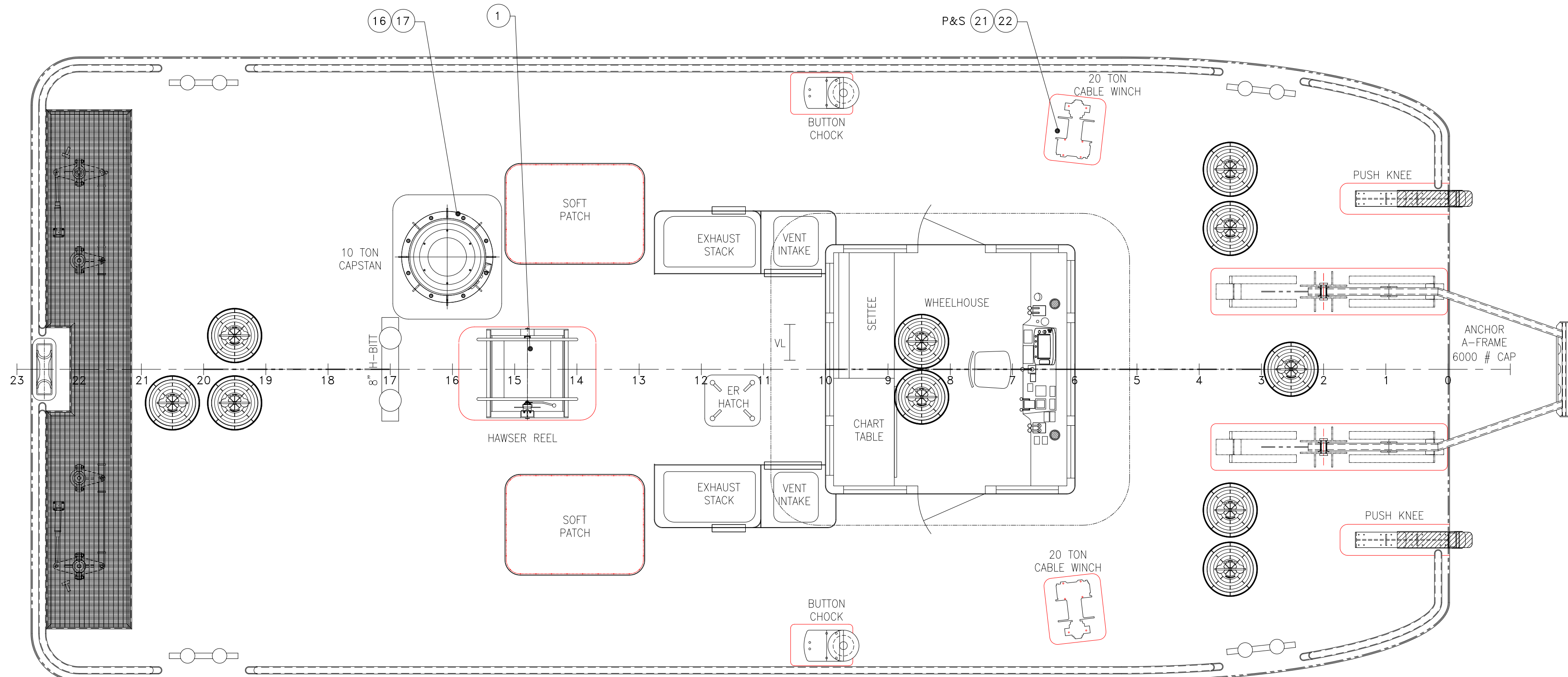
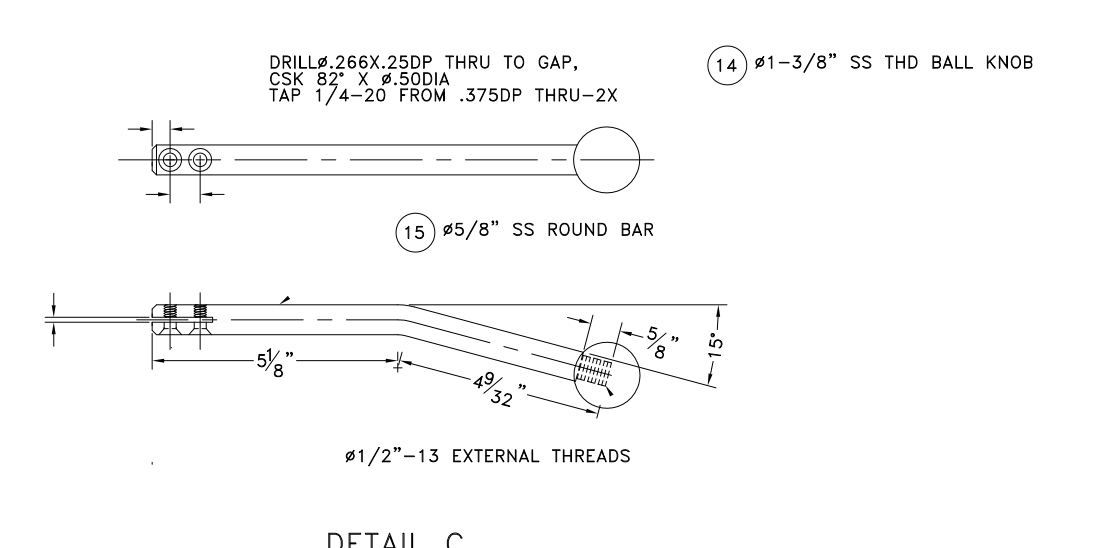
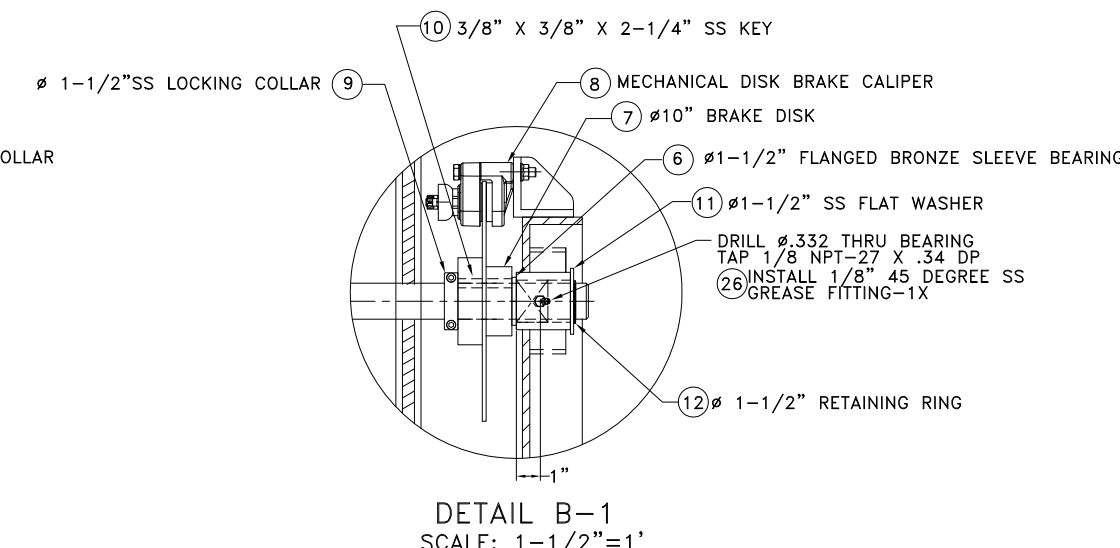
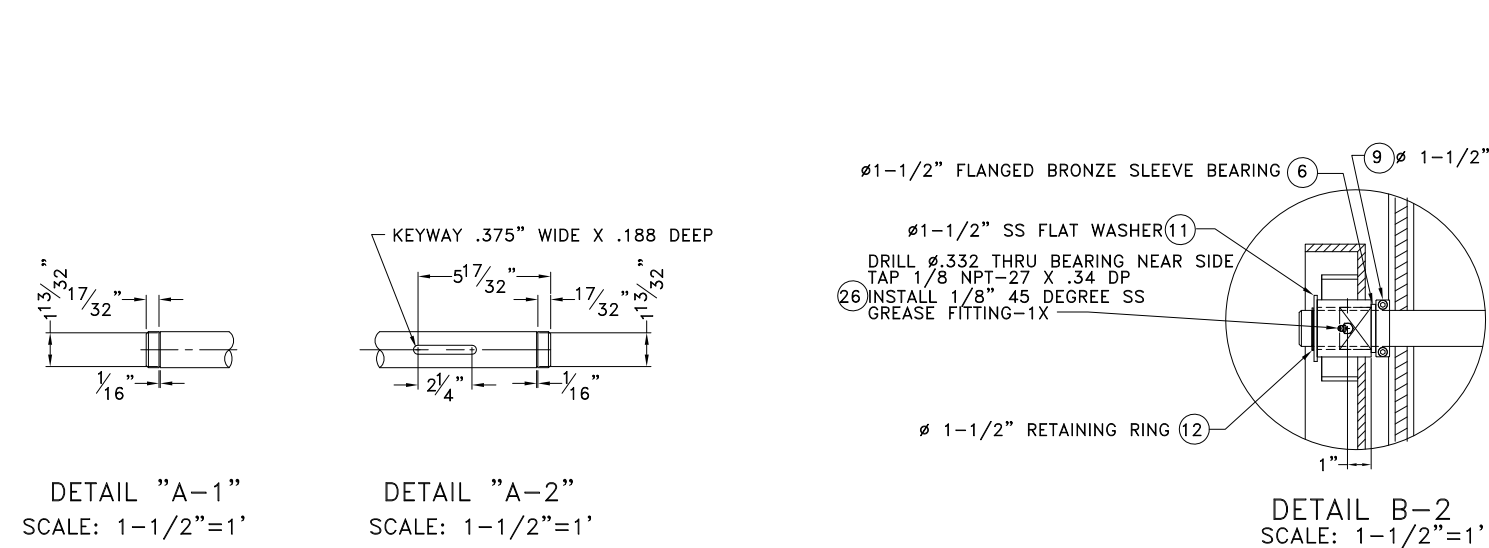
**2 HAWSER REEL**  
 MATERIAL : A36 STEEL, ASTM A53 PIPE,  
 UNLESS OTHERWISE NOTED



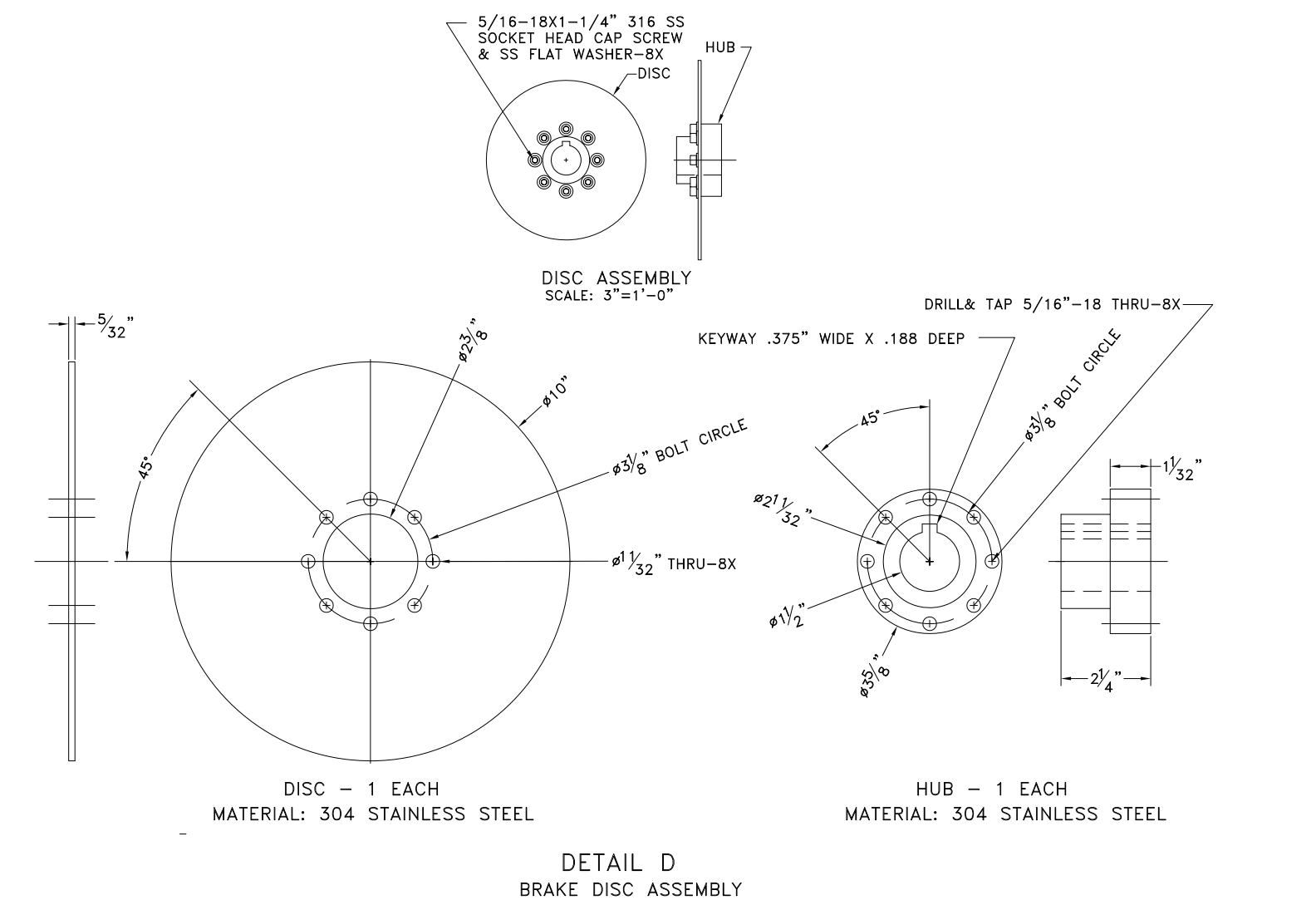
**3 HAWSER REEL FRAME, STBD**  
 MATERIAL : A36 STEEL, ASTM A53 PIPE,  
 UNLESS OTHERWISE NOTED



**4 HAWSER REEL FRAME, PORT**  
 MATERIAL : A36 STEEL, ASTM A53 PIPE,  
 UNLESS OTHERWISE NOTED



**MAIN DECK PLAN**  
 SCALE: 3/8" = 1'-0"



**DETAIL D  
 BRAKE DISC ASSEMBLY**  
 SCALE: 3" = 1" UNLESS OTHERWISE SPECIFIED

**BILL OF MATERIALS**

ITEM	QTY.	DESCRIPTION	MANUFACTURER #/MATL	REMARKS	ITEM	QTY.	DESCRIPTION	MANUFACTURER #/MATL	REMARKS
1	1	HAWSER REEL ASSEMBLY		SEE DWG	16	1	CAPSTAN FOUNDATION		SEE DWG
2	1	HAWSER REEL		SEE DWG	17	1	CAPSTAN, VERTICAL, 5 TON, HYDRAULIC		SEE DWG
3	1	HAWSER REEL FRAME, STBD		SEE DWG	18	8	BOLT, 3/4"-10 X 3-1/2"	316 STAINLESS STEEL	
4	1	HAWSER REEL FRAME, PORT		SEE DWG	19	8	NUT, NYLOC, 3/4"-10	316 STAINLESS STEEL	
5	1	1-1/2" OD X 34.75" LONG SHAFT	304 STAINLESS STEEL		20	16	WASHER, FLAT, 3/4"	316 STAINLESS STEEL	
6	2	1-1/2" ID FLANGED SLEEVE BEARING	SAE B63 BRONZE		21	2	20 TON CABLE WINCH FOUNDATION		SEE DWG
7	1	10" BRAKE DISK, 1-1/2" ID HUB, .156 THICK DISK	304 STAINLESS STEEL	SEE DETAIL "D"	22	2	20 TON CABLE WINCH		SEE DWG
8	1	DISC BRAKE CALIPER, MECHANICAL, FIXED, FLOATING CALIPER, ALUMINUM	TOOLMATIC ME20MA	OR EQUAL	23	8	BOLT, 3/4"-10 X 2-1/4"	316 STAINLESS STEEL	
9	2	1-1/2" DIAMETER LOCKING COLLAR	303 STAINLESS STEEL		24	8	NUT, NYLOC, 3/4"-10	316 STAINLESS STEEL	
10	1	3/8" X 3/8" X 2-1/4" LG KEYSTOCK	316 STAINLESS STEEL		25	16	WASHER, FLAT, 3/4"	316 STAINLESS STEEL	
11	2	WASHER, FLAT, 1-1/2"	316 STAINLESS STEEL		26	2	GREASE FITTING, 45 DEGREE, 1/8" PTF	303 STAINLESS STEEL	
12	2	RETAINING RING, EXTERNAL, 1-1/2" O.D.	17-7 STAINLESS STEEL	SEE DWG	27	2	U-BOLT	316 STAINLESS STEEL	SEE DETAIL E
13	2	SCREW, OVAL HEAD, PHILLIPS 1/4-20 X 5/8" LG	316 STAINLESS STEEL	SEE DWG	28	2	NUT, NYLOC	316 STAINLESS STEEL	SEE DETAIL E
14	1	KNOB, BALL, 1-3/8" DIA, THD 1-1/2-20 X 5/8" DP	303 STAINLESS STEEL	SEE DWG	29	2	WASHER, FLAT	316 STAINLESS STEEL	SEE DETAIL E
15	1	45/8"x10" LG SS ROUND BAR	304 STAINLESS STEEL		30	2	CLAMP, HAWSER	NYLON	SEE DETAIL E

PROFESSIONAL ENGINEER

© 2018 by DeJong & Lebet, Inc.

**DeJong & Lebet, Inc.**  
 Naval Architects  
 Marine Engineers  
 Consultants  
 Surveyors

1734 Emerson Street  
 Jacksonville, Florida 32207  
 www.dejongandlebet.com

Phone: (904) 399-3673  
 Fax: (904) 399-1522  
 info@dejongandlebet.com

STATE OF FLORIDA  
 PROFESSIONAL ENGINEER

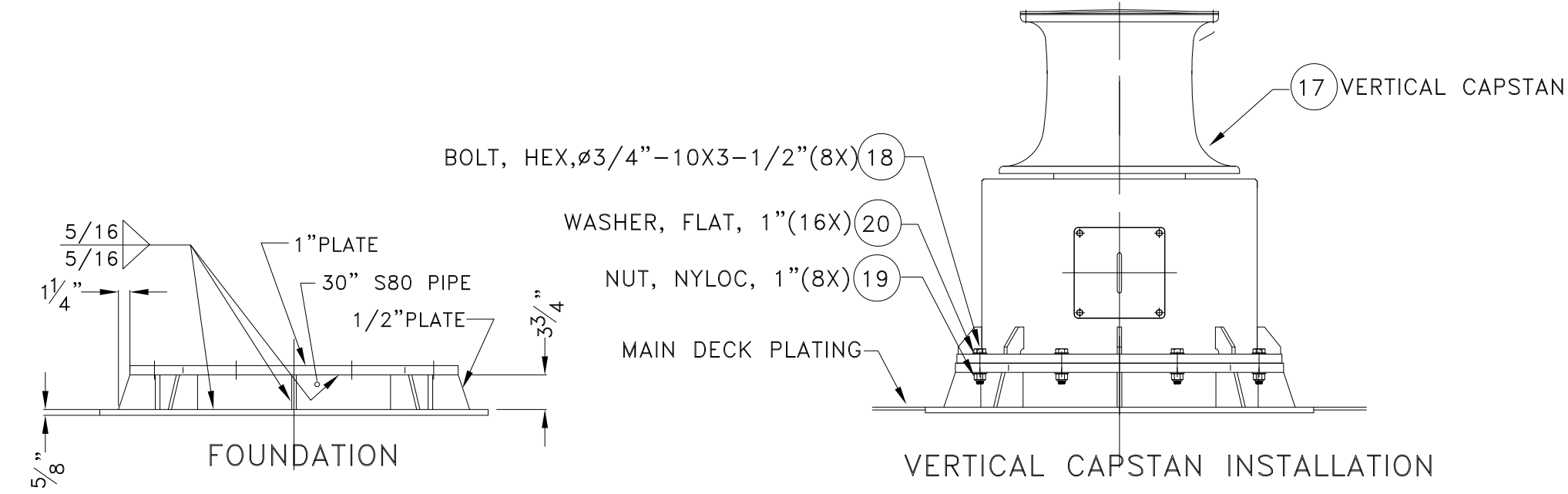
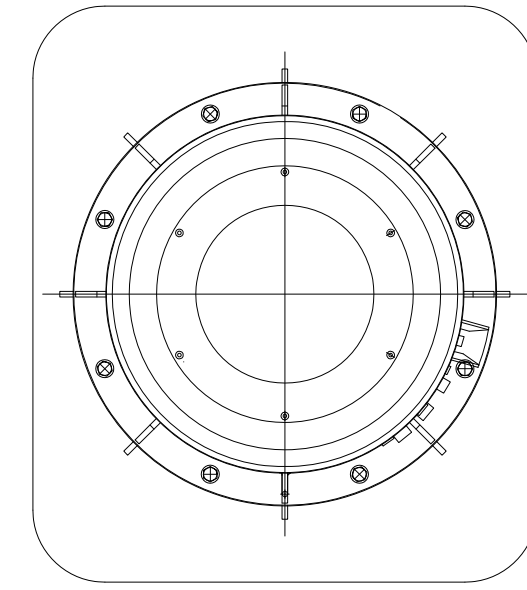
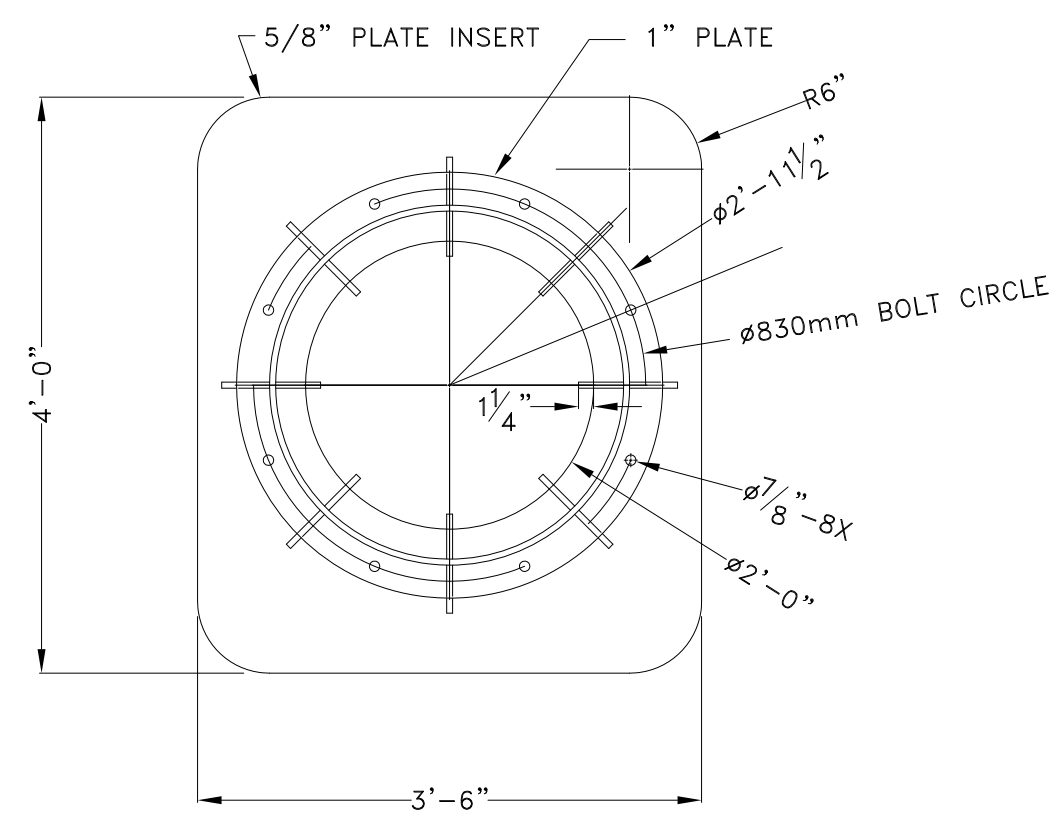
WILLIAM HAYDEN  
 LICENSE NO. 60106

45.5'x18'x6.5' NCDOT PUSHBOAT

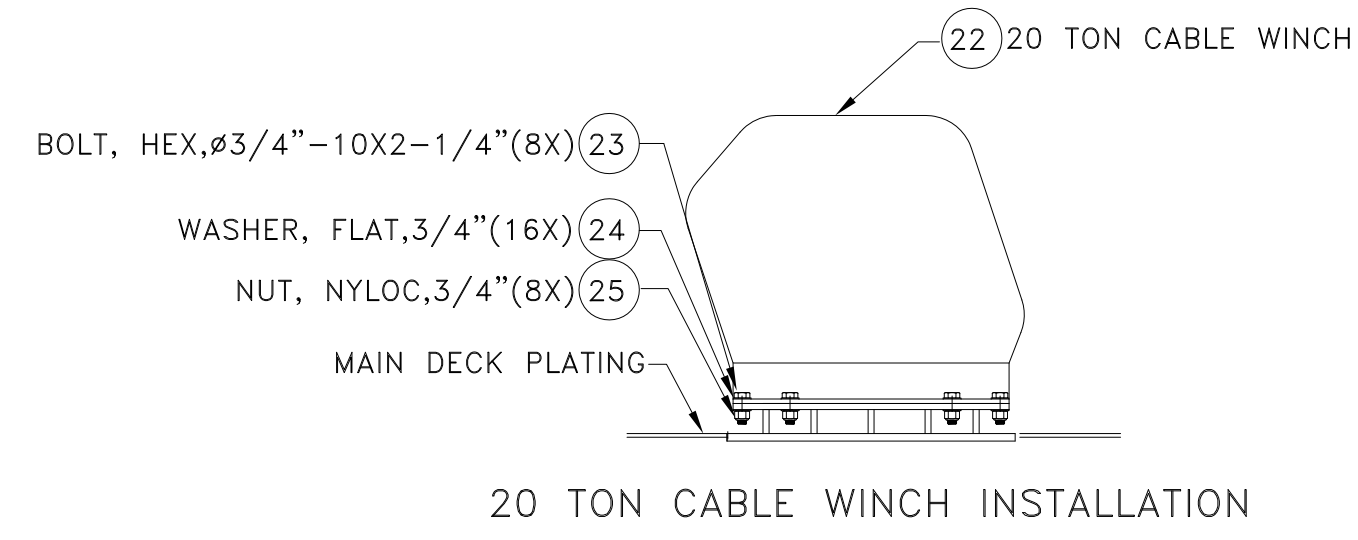
**DECK CAPSTAN INSTALLATION  
 & HAWSER REEL DETAILS**

Dwg. No. **1393B-685** Alt. No. 0  
 Sh. 1 of 1

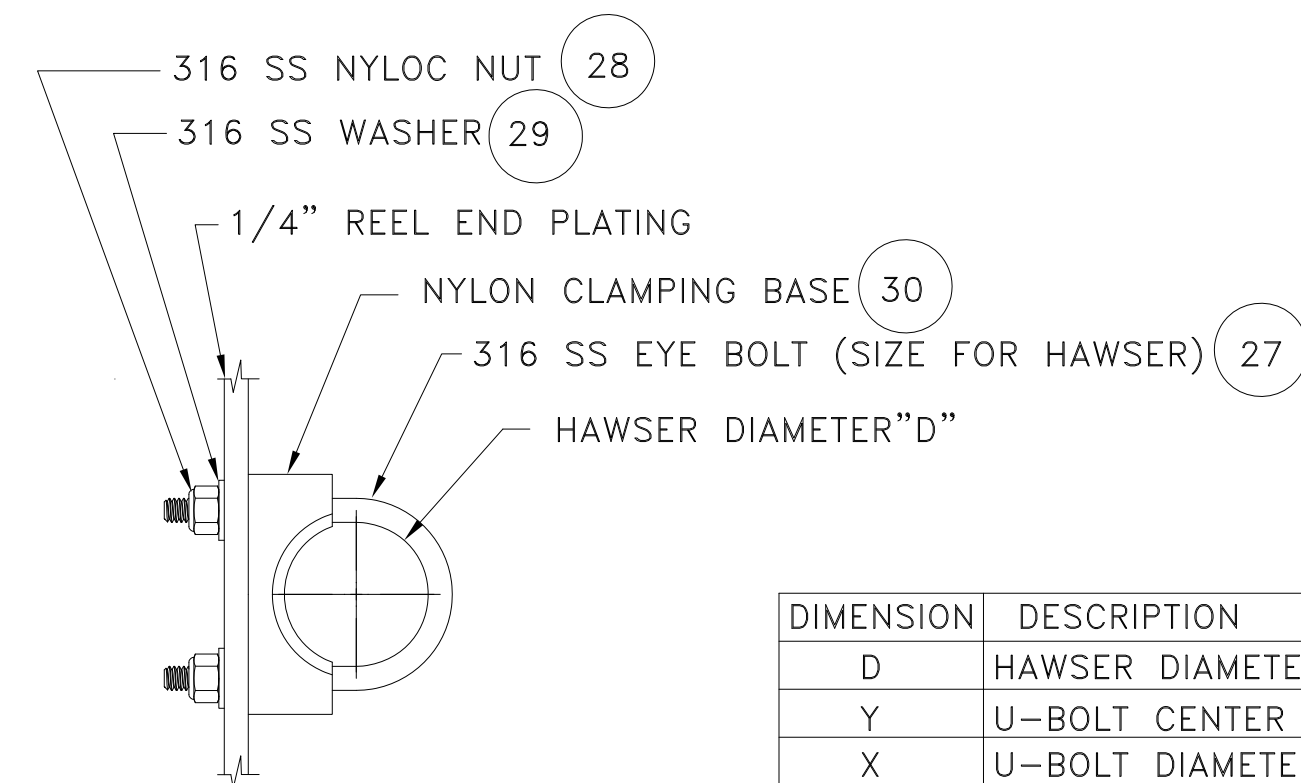
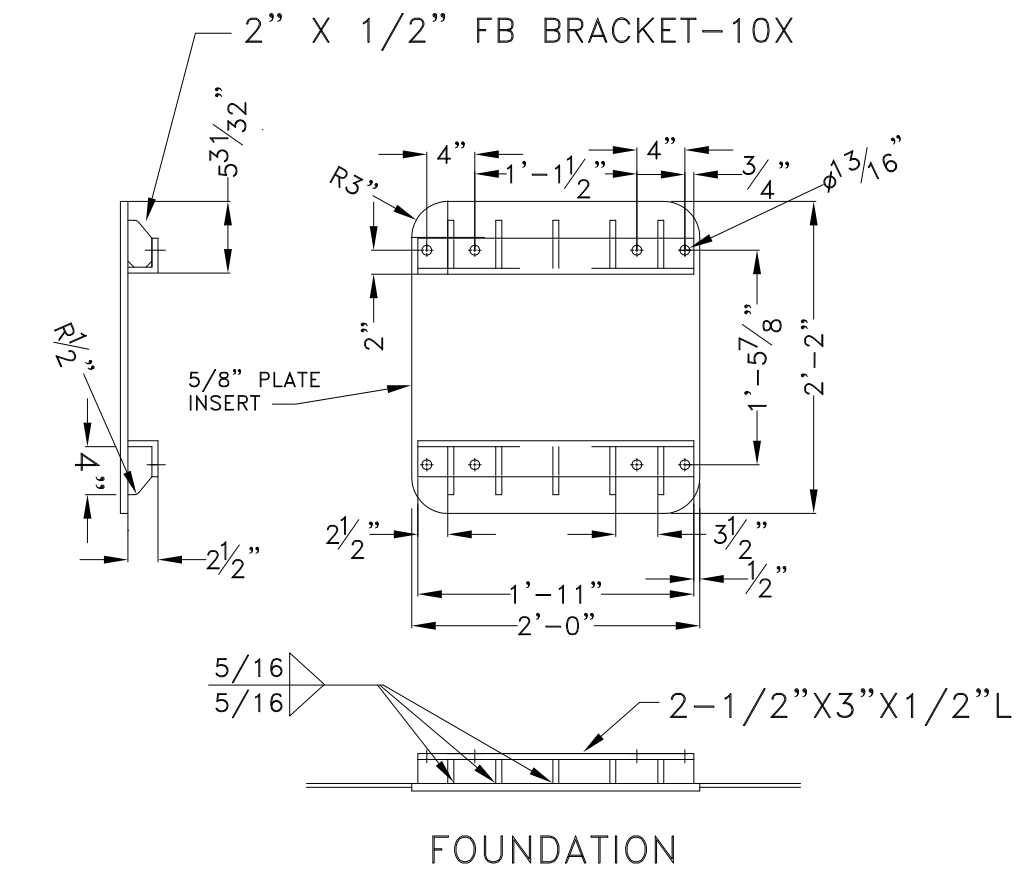
Drawn By: **JACOB CONNALLY** Date: **JANUARY 2, 2019**  
 Checked By: \_\_\_\_\_ Date: \_\_\_\_\_  
 App'd By: \_\_\_\_\_ Scale: **AS NOTED**  
 ABS App'l: \_\_\_\_\_ USCG App'l: \_\_\_\_\_



16 CAPSTAN FOUNDATION  
MATERIAL : A36 STEEL & NOTED  
SCALE: 3/4" = 1'

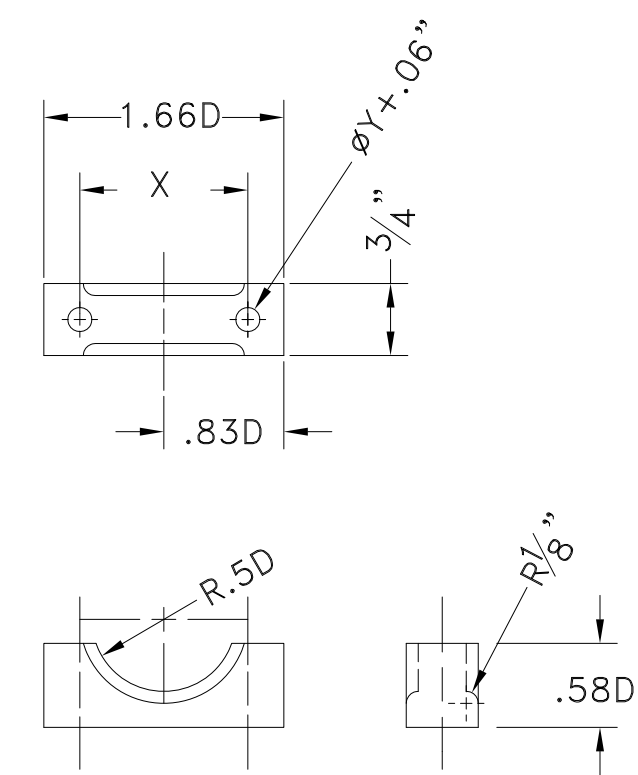


21 20 TON CABLE WINCH FOUNDATION-2EA  
MATERIAL : A36 STEEL & NOTED  
SCALE: 3/4" = 1'



HAWSER CLAMP ASSY-2 EA

DIMENSION	DESCRIPTION
D	HAWSER DIAMETER
Y	U-BOLT CENTER TO CENTER
X	U-BOLT DIAMETER



CLAMPING BASE-2 EA  
MATERIAL: NYLON

DETAIL E  
HAWSER DEAD END CONNECTION  
SCALE: 6"=1' UNLESS OTHERWISE SPECIFIED

PROPRIETARY RIGHTS  
This document contains matter in which DeJong & Lebet, Incorporated has proprietary rights. Neither counsel nor permission should be given to reproduce, disclose or use in any manner this document in whole or in part or any information contained herein, except by written permission, or written agreement with DeJong & Lebet, Incorporated.  
In the event of a purchase of this document the purchaser is authorized to control no more than one device to occur hereafter, unless otherwise agreed to in writing by DeJong & Lebet, Incorporated.  
© 2018 by DeJong & Lebet, Inc.

**DeJong & Lebet, Inc.**  
Naval Architects  
Marine Engineers  
Consultants  
Surveyors  
1724 Emerson Street  
Jacksonville, Florida 32207  
www.dejongandlebet.com  
Phone: (904) 399-3673  
Fax: (904) 399-1522  
info@dejongandlebet.com

Title: 45.5'x18'x6.5' NCDOT PUSHBOAT

**DECK CAPSTAN INSTALLATION  
& HAWSER REEL DETAILS**

Dwg. No. **1393B-685** Alt. No. 0  
Sht. 2 of 2

Drawn By: **JACOB CONNALLY** Date: **JANUARY 2, 2019**  
Checked By: \_\_\_\_\_ Date: \_\_\_\_\_  
App'd By: \_\_\_\_\_ Scale: **AS NOTED**  
ABS App'l: \_\_\_\_\_ USCG App'l: \_\_\_\_\_