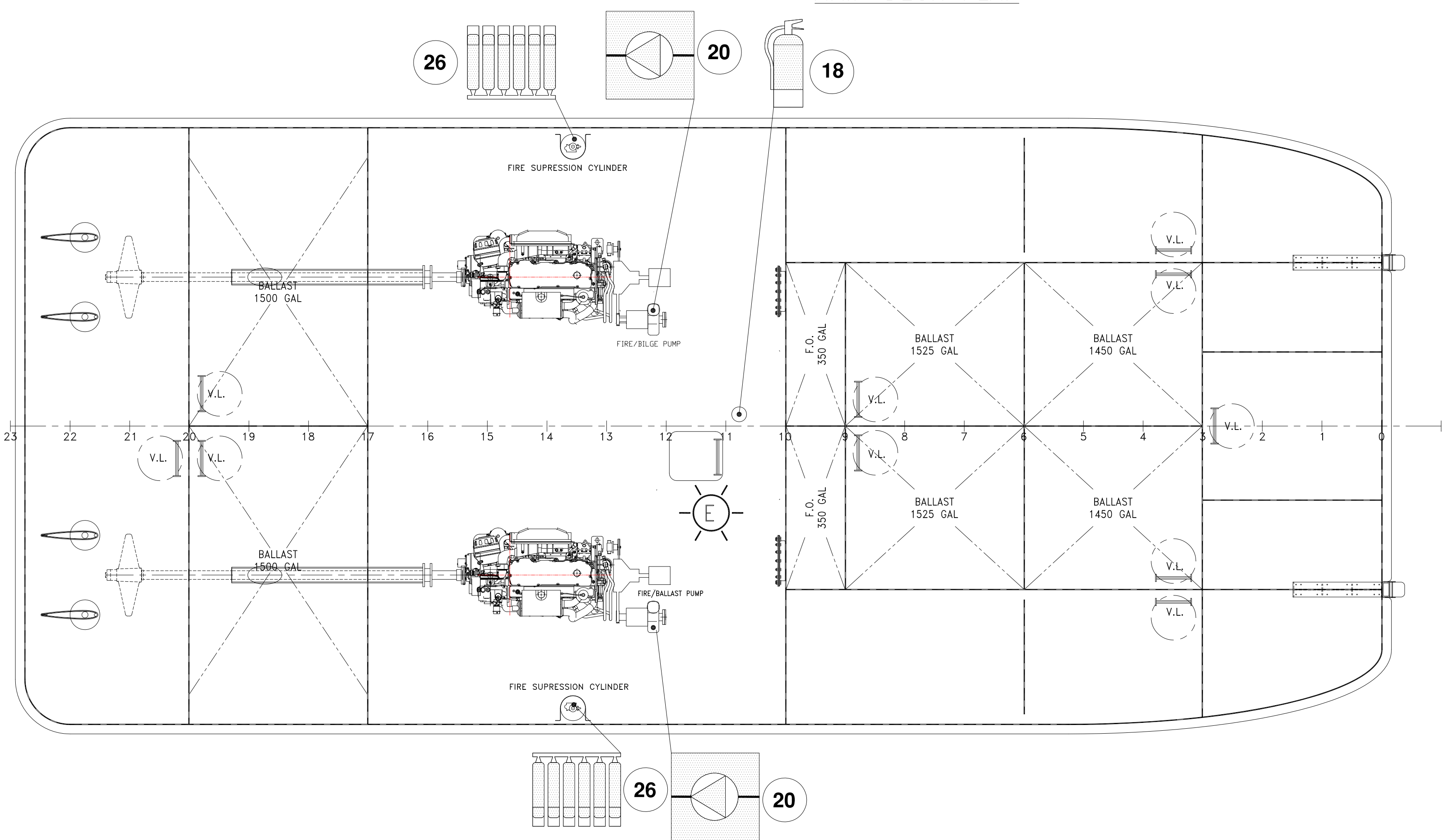


MAIN DECK PLAN



HOLD

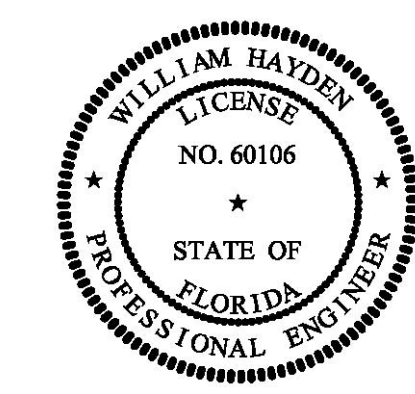
SYMBOL LEGEND	
SYMBOL	DESCRIPTION
[Symbol]	FLOATING RESCUE LITTER
[Symbol]	LIFE PRESERVERS, ADULT
[Symbol]	ADULT WORK VEST
[Symbol]	30" LIFE RING
[Symbol]	30" LIFE RING & WATERLIGHT
[Symbol]	VISUAL DISTRESS SIGNALS
[Symbol]	DEFIBRILLATOR
[Symbol]	FIRE AXE
[Symbol]	FIRE EXTINGUISHER
[Symbol]	FIRE PUMP
[Symbol]	FIRE HOSE STATION W/ RACK, VALVE, HOSE AND NOZZLE
[Symbol]	FIXED FIRE EXTINGUISHING SYSTEM
[Symbol]	FIRE DETECTION SYSTEM CONTROL PANEL
[Symbol]	FIRST AID KIT
[Symbol]	FLASHLIGHT
[Symbol]	EMERGENCY LIGHT

EQUIPMENT LIST

LIFE SAVING EQUIPMENT						
ITEM	QTY.	DESCRIPTION	LOCATION	PART NUMBER	MANUFACTURER	REMARKS
1	2	LIFE PRESERVERS, ADULT	SEE DWG			
2	2	ADULT WORK VEST	SEE DWG			
3	4	LIFE RING, 30"	SEE DWG			
4	4	BRACKET, LIFE RING	SEE DWG			
5	60 FT	ROPE, ORANGE, POLYETHYLENE, 5/16"	MAIN DECK			
6	2	LIGHT, MAN OVERBOARD	MAIN DECK			
7	2	BRACKET, MAN OVERBOARD LT	MAIN DECK			
8	12 FT	ROPE, ORANGE, POLYETHYLENE, 5/16"	MAIN DECK			6 FT PER LIGHT

RESCUE EQUIPMENT						
ITEM	QTY.	DESCRIPTION	LOCATION	PART NUMBER	MANUFACTURER	REMARKS
9	1	FLOATING RESCUE LITTER	WHEELHOUSE EXT			
10	1	VISUAL DISTRESS SIGNALS	WHEELHOUSE			
11	1	FLASHLIGHT & D BATTERIES	WHEELHOUSE			
12	1	DEFIBRILLATOR, PORTABLE	GALLEY			

FIRE & SAFETY EQUIPMENT						
ITEM	QTY.	DESCRIPTION	LOCATION	PART NUMBER	MANUFACTURER	REMARKS
16	1	AXE, FIRE	WHEELHOUSE			W/ MOUNTING BRACKETS
17	1	FIRE EXTINGUISHER, 10# ABC TYP. II	WHEELHOUSE			W/ MOUNTING BRACKETS
18	1	FIRE EXTINGUISHER, 10# ABC TYPE II	ENGINE ROOM			W/ MOUNTING BRACKETS
19	1	FIRE DETECTION SYSTEM	WHEELHOUSE			
20	1	FIRE PUMP, 50 PSI @ 80 GPM	ENGINE ROOM			
21	2	FIRE HOSE ENCLOSURE	SEE DWG			STAINLESS STEEL
22	2	FIRE HOSE, UL, 1 1/2", 50', 1.5"	SEE DWG			
23	2	ANGLE HOSE VALVE, BRASS, 1.5"	SEE DWG			
24	2	COMBINATION NOZZLE, 1.5"	SEE DWG			
25	2	SPANNER WRENCH, UNIVERSAL	SEE DWG			
26	1	FIXED FIRE EXTINGUISHING SYSTEM	ENGINE ROOM			24"Wx36"Lx24"H RAISED 1/2" ABOVE THE MAIN DECK W/ 3/4" DRAIN
27	1	ALUMINUM DECK STORAGE LOCKER	MAIN DECK			



DeJong & Lebet, Inc.

Naval Architects
Marine Engineers
Consultants
Surveyors

1734 Emerson Street
Jacksonville, Florida 32207
www.dejongandlebet.com

Phone: (904) 399-3673
Fax: (904) 399-1522
info@dejongandlebet.com

Title: 45.5'x20'x6.5' NCDOT PUSHBOAT

**LIFE, EMERGENCY &
FIRE FIGHTING EQUIPMENT**

Dwg. No. 17-1393-680 Alt. No. 0
Sht. 1 of 1

Drawn By: JAH Date: DECEMBER 6, 2018
Checked By: Date:
App'd By: Scale: 3/8" = 1'-0"
ABS App'l: USCG App'l: