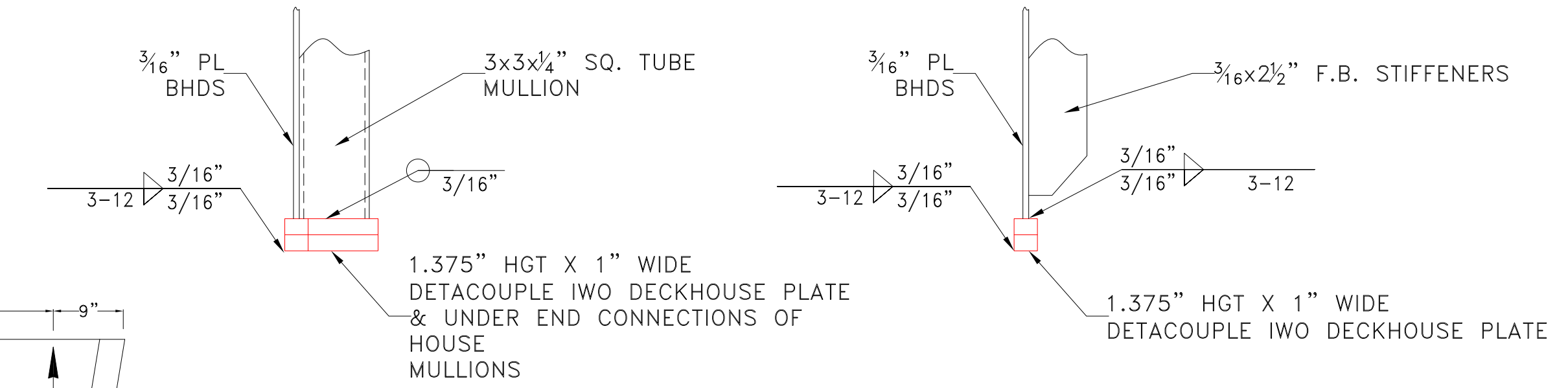
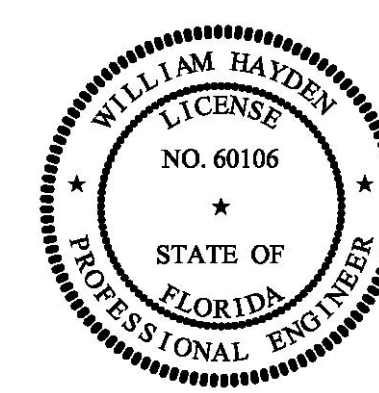
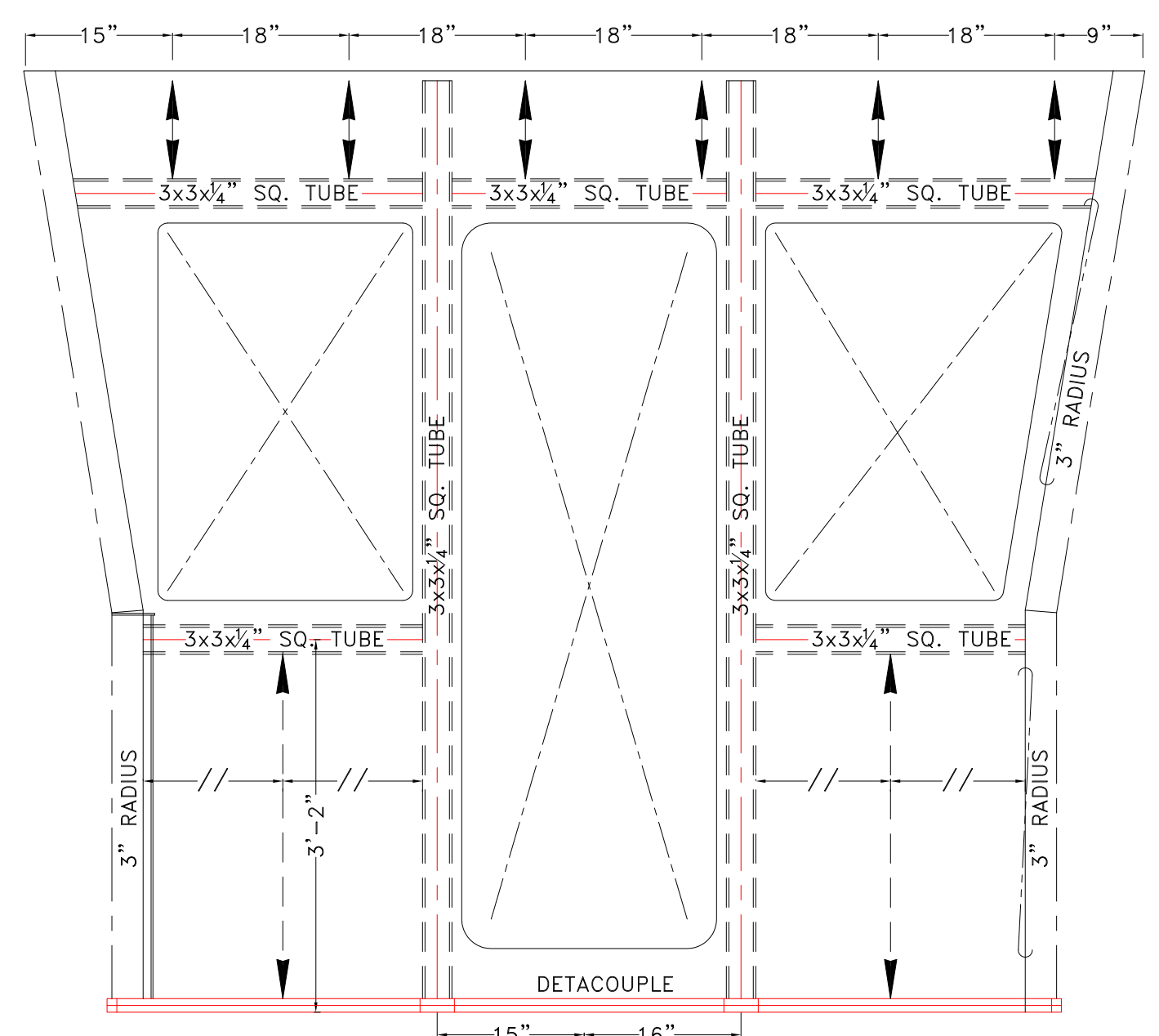
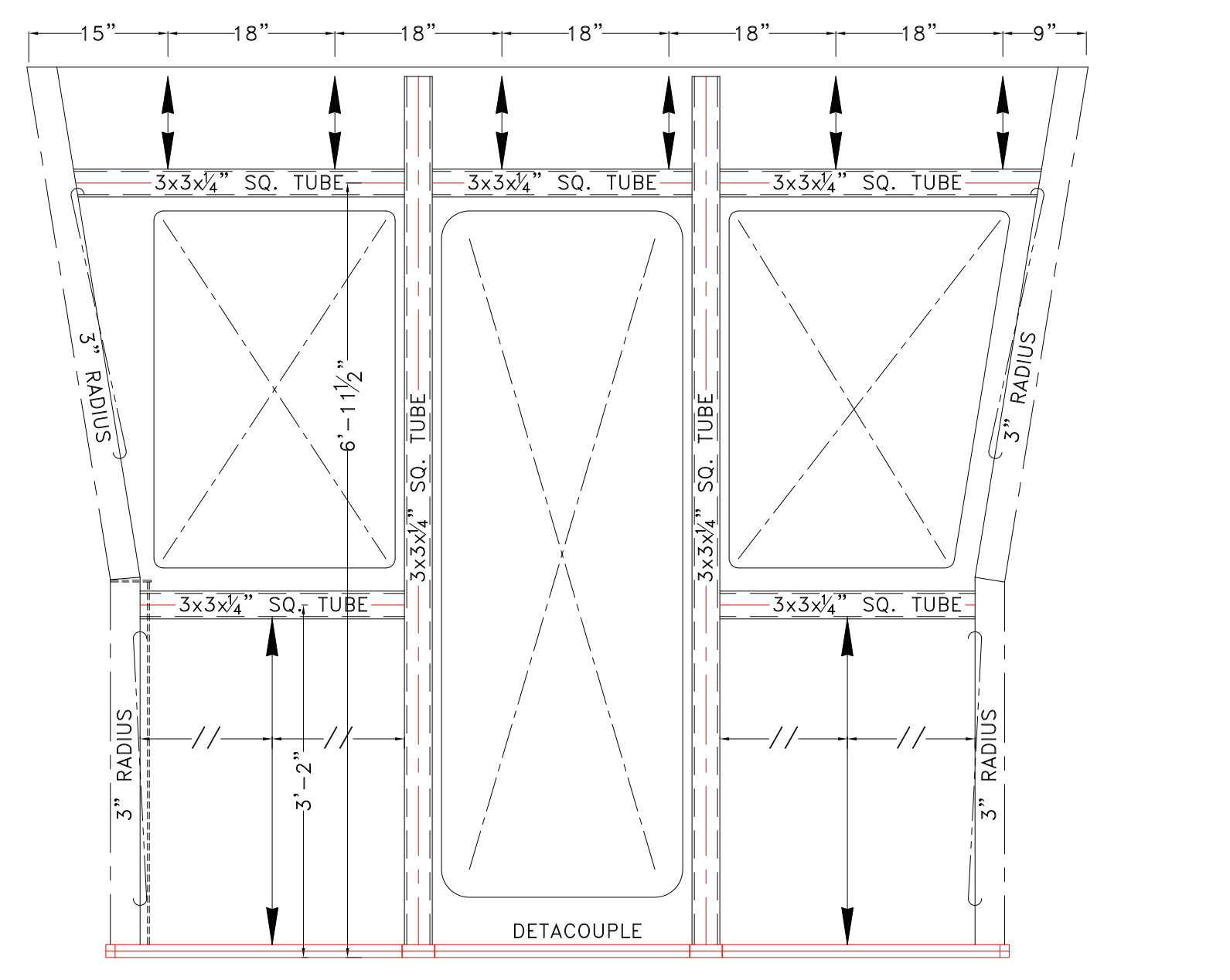


ALL DECKHOUSE CONSTRUCTION
5086 H116 AL. PLATING
6061-T6 AL. EXTRUSIONS



WELD SCHEDULE-TYPICAL

WELD DBL. CONT. @ EACH END	3/16 1/2 1/2-10	GIRDERS TO DECK PLATE
WELD DBL. CONT. @ EACH END	3/16 1/2 1/2-12	1. STIFFENERS TO DECK PLATE 2. STIFFENERS TO BHD
	3/16 1/2 1/2-12	1. CORNER BRACKETING 2. STIFFENER LAPS 3. MULLIONS @ ENDS
	3/16 1/2 1/2-12	LOWER BULKHEAD EDGE TO DECKS
	3/16 1/2 1/2-12	UPPER BULKHEAD EDGE TO DECKS



DeJong & Lebet, Inc.
Naval Architects
Marine Engineers
Consultants
Surveyors

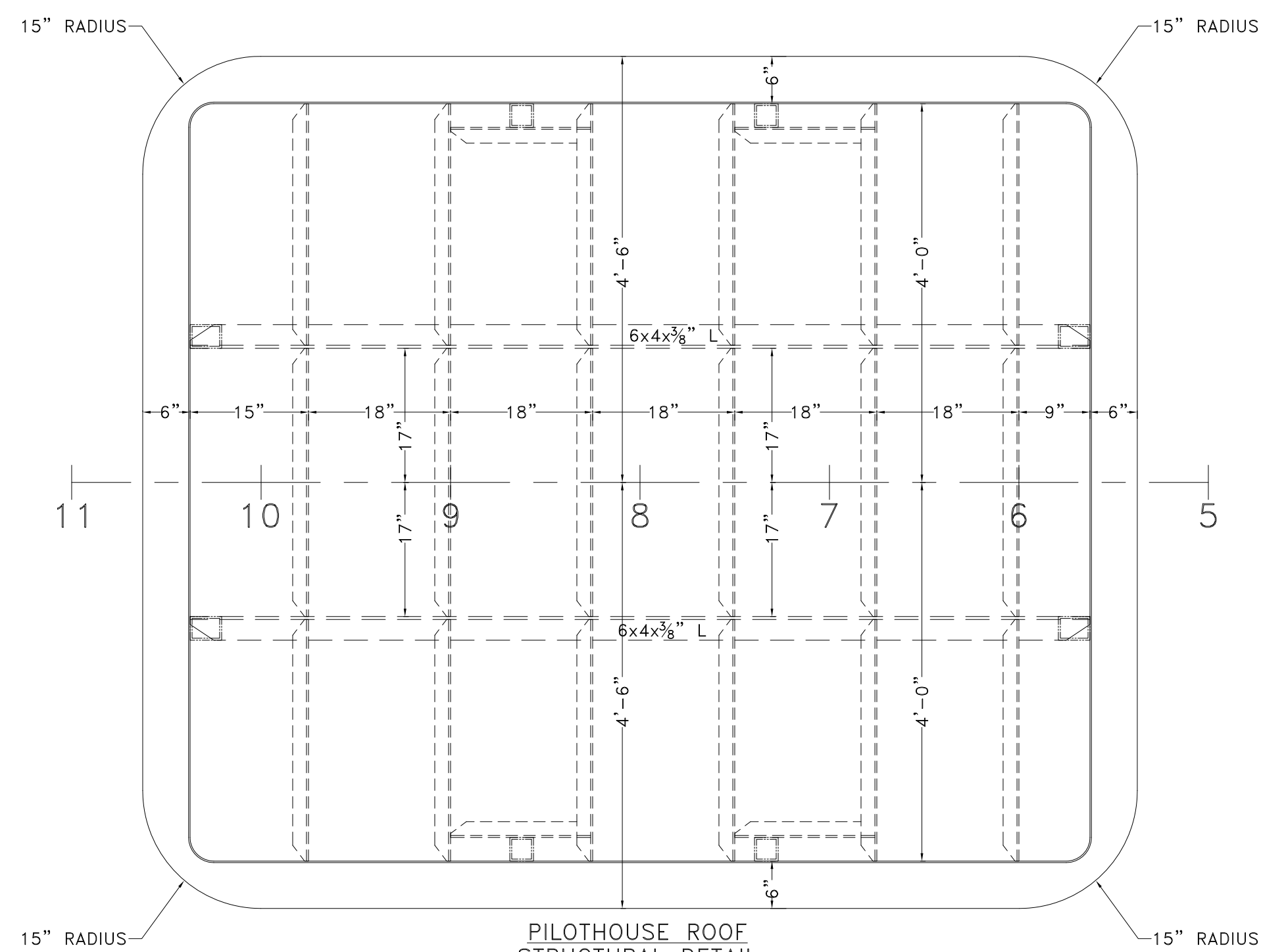
1734 Emerson Street
Jacksonville, Florida 32207
www.dejongandlebet.com

Phone: (904) 399-3473
Fax: (904) 399-1522
info@dejongandlebet.com

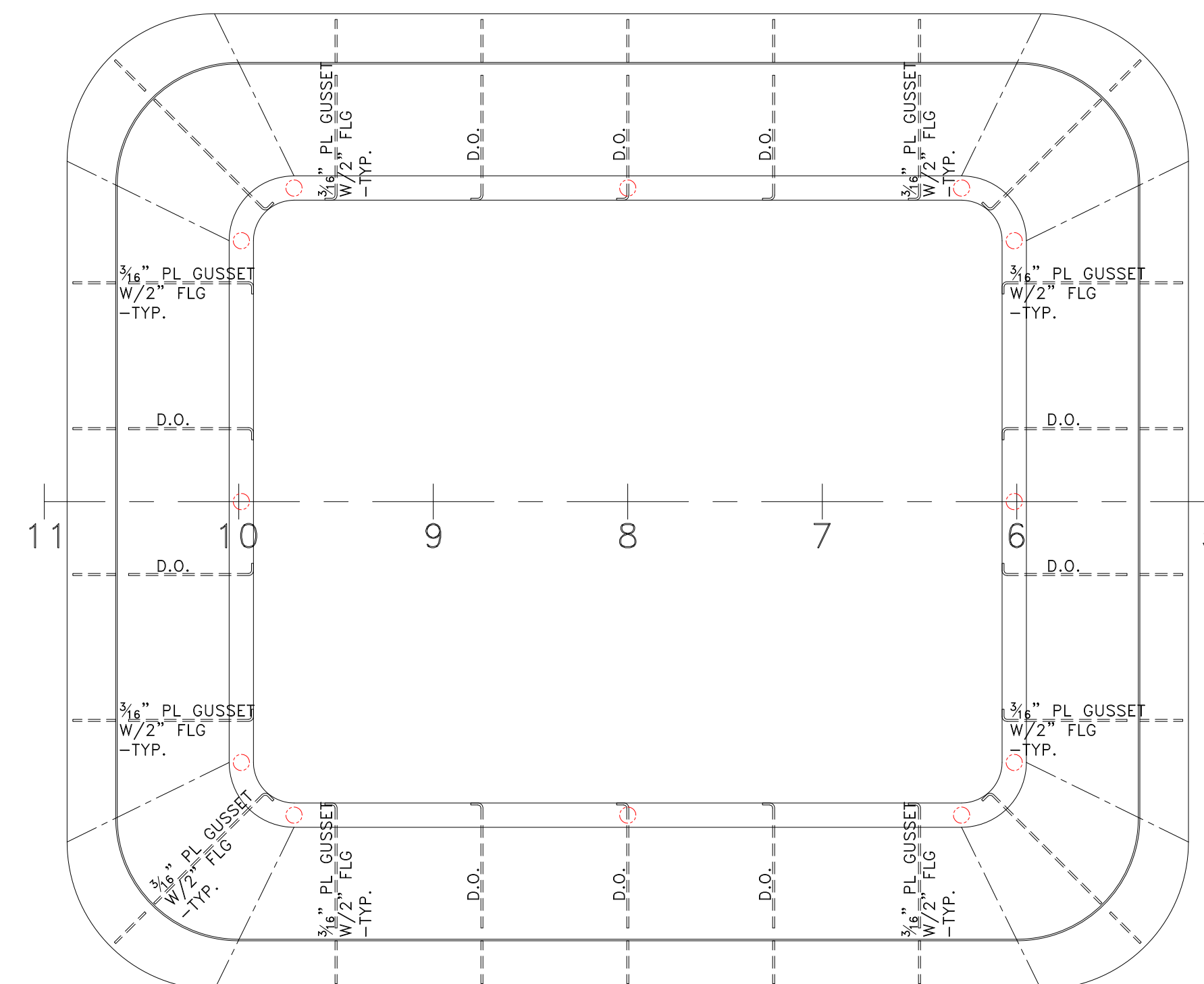
ALUMINUM PILOTHOUSE STRUCTURAL DETAILS

Dwg. No. 17-1393-152 Alt. No. 0
Sh. 1 of 3

Drawn By: JACOB CONNALLY Date: JUNE 05, 2018
Checked By: _____ Date: _____
App'd By: _____ Scale: 3/4" = 1'-0"
ABS App'l: _____ USCG App'l: _____

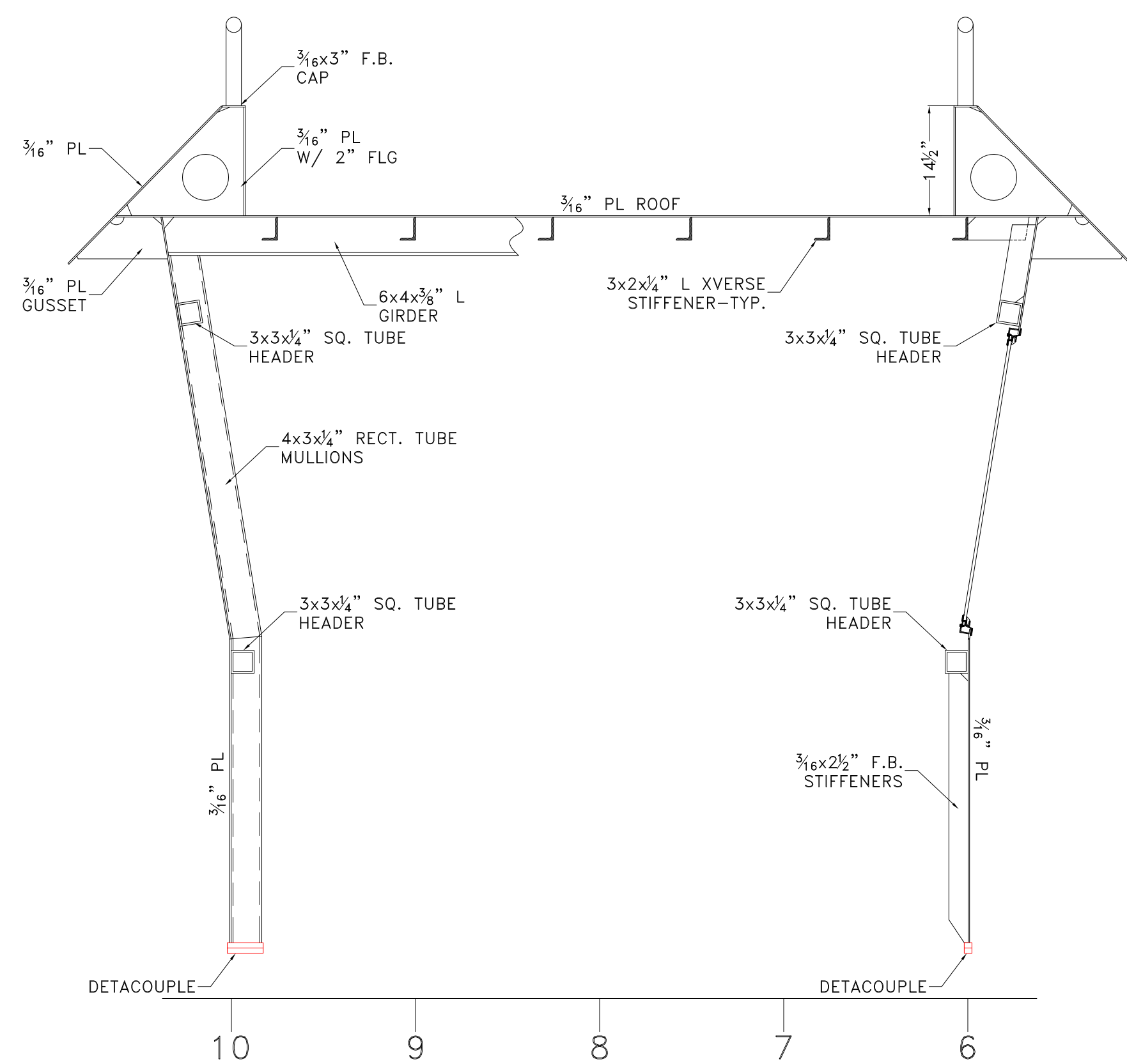


PILOTHOUSE ROOF
STRUCTURAL DETAIL
@ 8'-0" ABV MAIN DECK
 $\frac{3}{16}$ " PL W/ 3x2x $\frac{1}{4}$ " L STIFFENERS
UNLESS OTHERWISE NOTED
SHOWN LKG DOWN

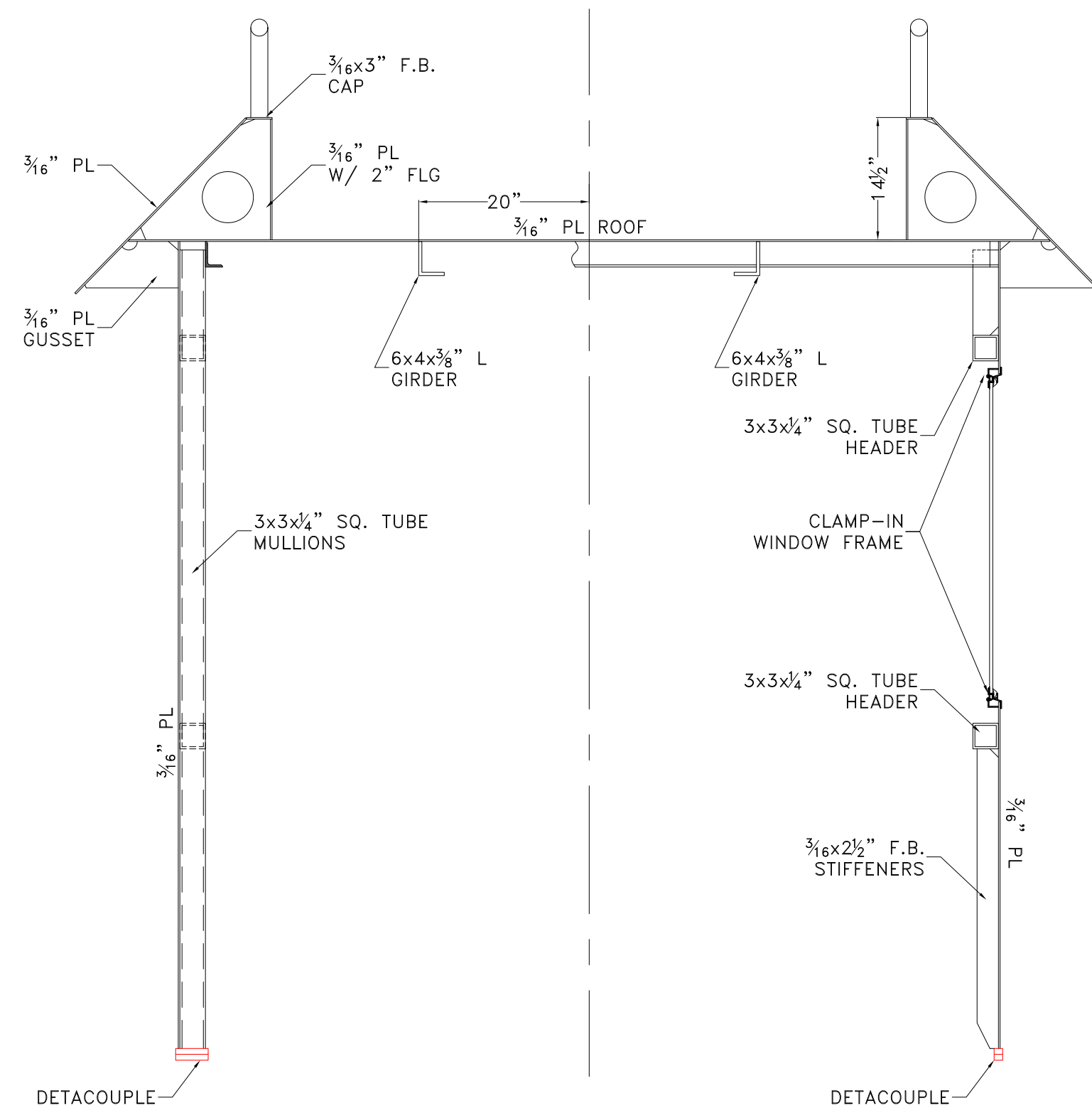


PILOTHOUSE ROOF
COAMING DETAIL
 $\frac{3}{16}$ " PL W/ $\frac{3}{16}$ " PL GUSSET FRAMES
UNLESS OTHERWISE NOTED
SHOWN LKG DOWN

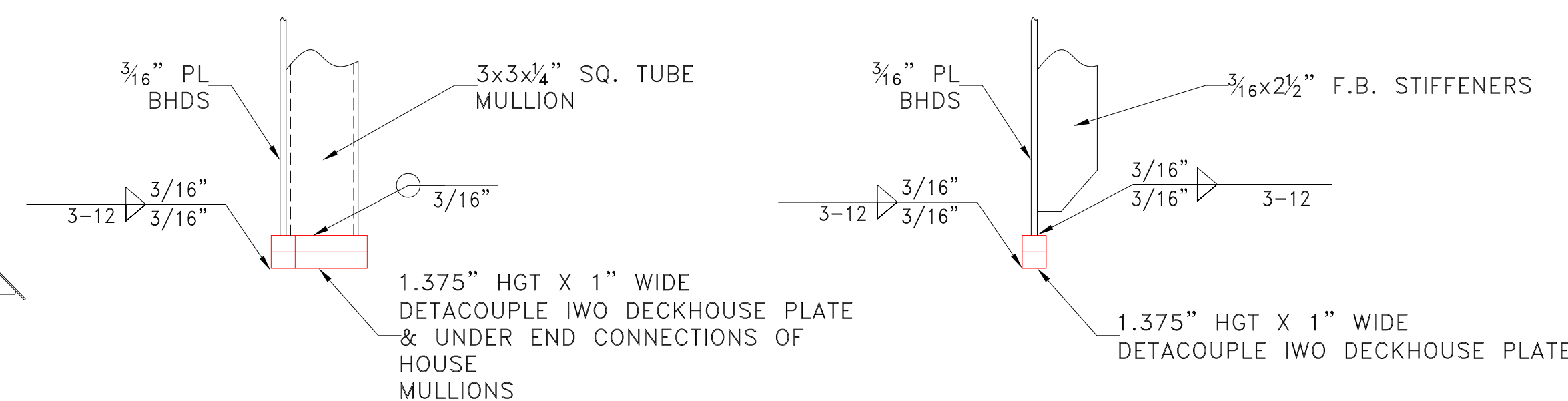
ALL DECKHOUSE CONSTRUCTION
5086 H116 AL. PLATING
6061-T6 AL. EXTRUSIONS



PILOTHOUSE
TYPICAL LONGITUDINAL
SECTION DETAIL

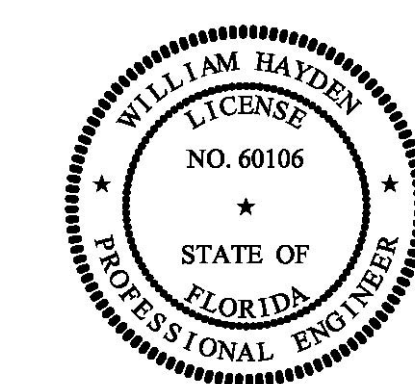
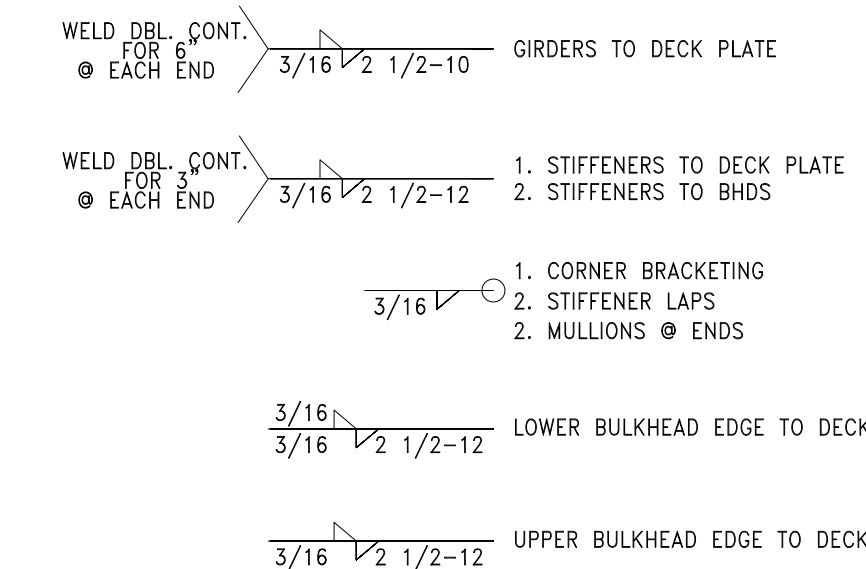


PILOTHOUSE
TYPICAL XVERSE
SECTION DETAIL



DETACOUPLE DETAILS
@ MAIN DECK

WELD SCHEDULE-TYPICAL



PROPERTY RIGHTS

This document discloses neither in which DeJong & Lebet, Incorporated has proprietary rights. Neither neither our possession thereof confers on ourselves or third parties any right to reproduce, disclose or use in any manner this document in whole or in part or any information contained therein, except by written permission or written agreement with DeJong & Lebet, Incorporated.

In the event of a portion of this document the purchaser is authorized to construct no more than one device to accord therewith, unless otherwise agreed to in writing by DeJong & Lebet, Incorporated.

© 2018 by DeJong & Lebet, Inc.

DeJong & Lebet, Inc.

Naval Architects
Marine Engineers
Consultants
Surveyors

1724 Emerson Street
Jacksonville, Florida 32207
www.dejongandlebet.com

Phone: (904) 399-3673
Fax: (904) 399-1522
info@dejongandlebet.com

Title: 45.5'x20'x6.5' NCDOT PUSHBOAT

**ALUMINUM DECKHOUSE
ROOF & COAMING DETAILS**

Dwg. No. 17-1393-152 Alt. No. 0
Sh. 2 of 3

Drawn By: JACOB CONNALLY Date: JUNE 05, 2018
Checked By: _____ Date: _____
App'd By: _____ Scale: $\frac{3}{4}$ " = 1'-0"
ABS App'l: _____ USCG App'l: _____

