

REVISIONS

[illegible]

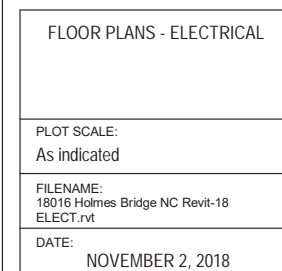
CRABTREE ROHRBAUGH & ASSOCIATES - ARCHITECTS

250 WEST MAIN STREET, SUITE 200
CHARLOTTESVILLE VA 22902
434-975-7262 FAX 434-975-7263

**401 EAST WINDING HILL ROAD
MECHANICSBURG PA 17055
717-458-0272 FAX 717-458-0047**

www.cra-architects.com

RENOVATIONS TO THE ISABEL HOLMES BRIDGE



PROJECT
3133

E1.1



610.398.0904
barryisett.com