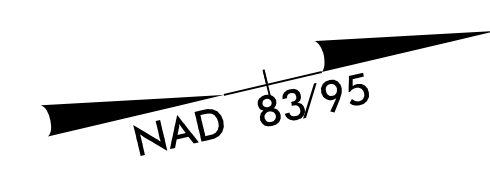


8/17/99

R:\21\208\Hydraulics\CADD\PSH\Erosion Control\NR-5742-EC.psh14.dgn

PROJECT REFERENCE NO.	SHEET NO.
R-5742	EC-16/CONST.-14
RW SHEET NO.	
ROADWAY DESIGN ENGINEER	HYDRAULICS ENGINEER

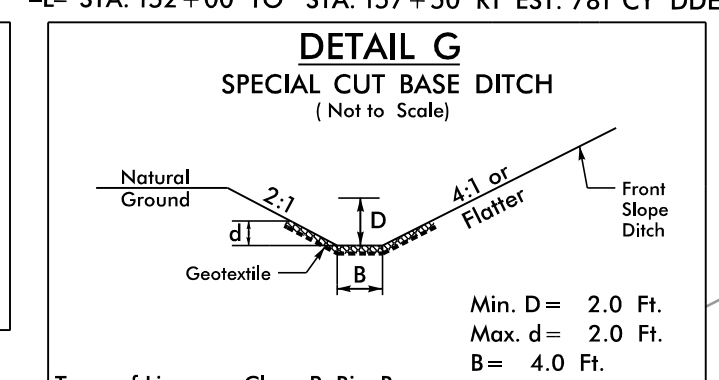
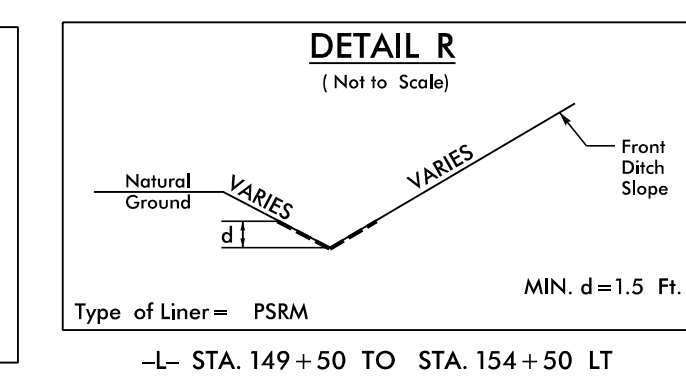
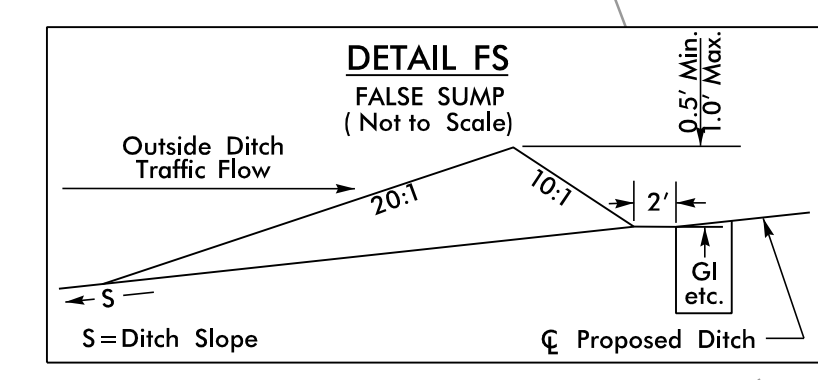
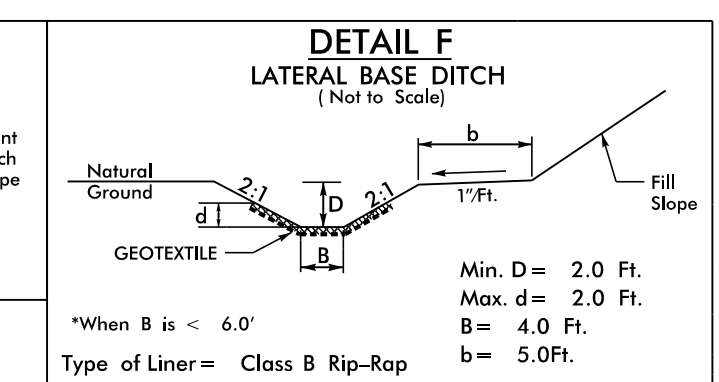
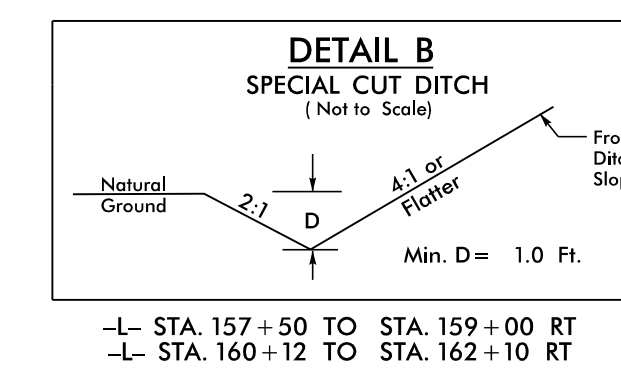


CLEARING AND GRUBBING  
EROSION CONTROL FOR  
CONSTRUCTION SHEET 14

NOTE:  
PLACE TEMPORARY ROCK SEDIMENT DAMS TYPE - B  
AND TEMPORARY ROCK SILT CHECKS TYPE - A AT  
DRAINAGE OUTLETS.

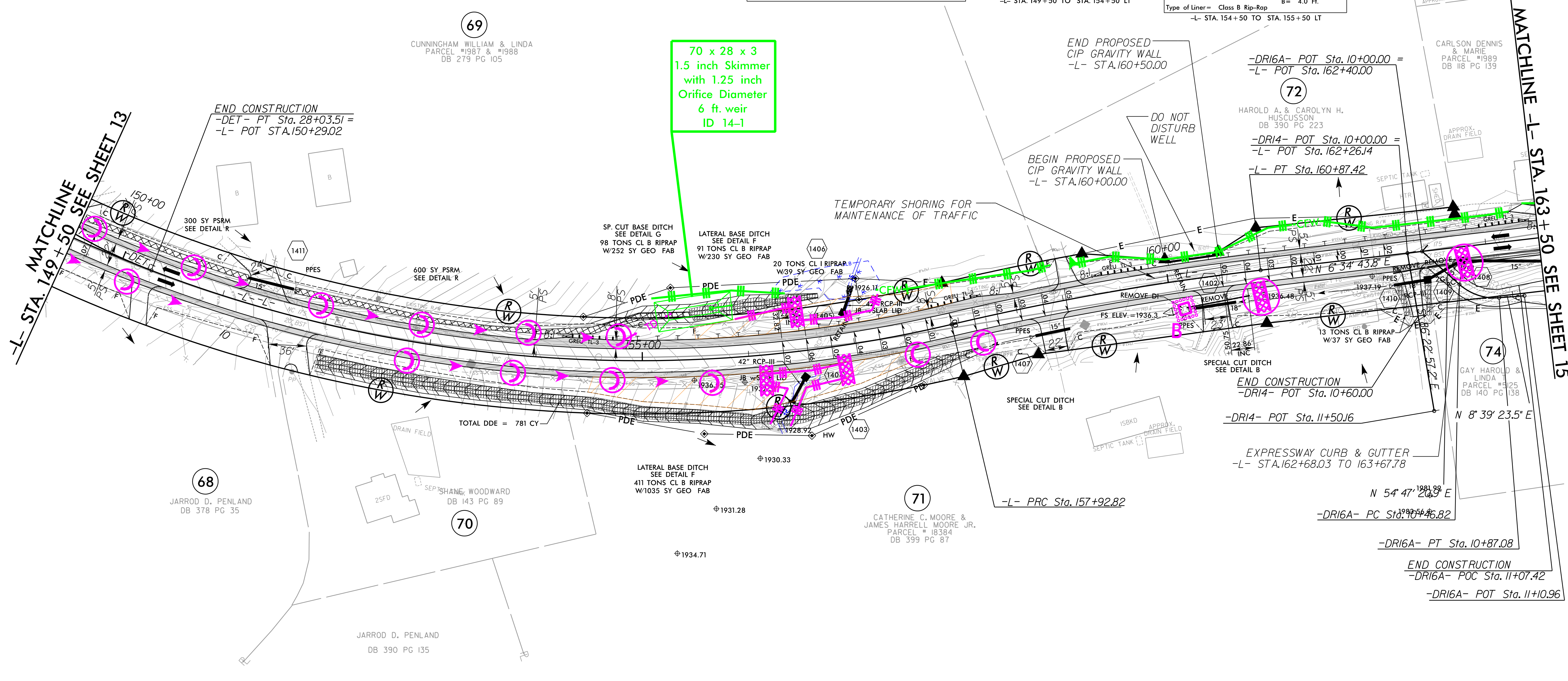
INSTALL PIPE(S) IN JURISDICTIONAL AREAS ACCORDING TO  
NCDOT BEST MANAGEMENT PRACTICES FOR  
CONSTRUCTION AND MAINTENANCE ACTIVITIES MANUAL.

Place Matting for Erosion Control  
on Slopes Adjacent to Permitted  
Wetlands as Work Allows.



-L- STA. 149+50 SEE SHEET 13  
MATCHLINE

MATCHLINE -L- STA. 163+50 SEE SHEET 15



-DR16A-	
PI Sta 10+68.11	$\Delta = 46^{\circ} 07' 57.4''$ (LT)
D = 114' 35" 29.6"	L = 40.26'
T = 21.29'	R = 50.00'

-L-	
PI Sta 150+97.53	$\Delta = 75^{\circ} 25' 46.6''$ (LT)
D = 4' 28" 34.4"	L = 1,685.11'
T = 989.82'	R = 1,280.00'
SE = 0.07	V = 50 mph

-L-	
PI Sta 159+40.29	$\Delta = 6^{\circ} 35' 36.5''$ (RT)
D = 2' 14" 17.2"	L = 294.60'
T = 147.46'	R = 2,560.00'
SE = 0.05	V = 50 mph

FOR LIMITS OF TEMPORARY SHORING, SEE TRAFFIC CONTROL PLANS.  
FOR -L- PROFILE SEE SHT. 25  
FOR -DR14- PROFILE SEE SHT. 29  
FOR -DET- PLAN PROFILE SEE SHT. 2B-3  
FOR WALL 3 PROFILE SEE SHT. W-2

NOTE: ALL DRIVEWAY WIDTHS ARE 16' UNLESS OTHERWISE NOTED.  
ALL DRIVEWAY RADII ARE 10' UNLESS OTHERWISE NOTED.

PLANS PREPARED BY :

RUMMEL, KLEPPER & KAHL, LLP  
900 RIDGEFIELD DRIVE SUITE 350  
RALEIGH, NORTH CAROLINA 27609-3960  
NC LICENSE NO. F-0112 • (919) 878-9560