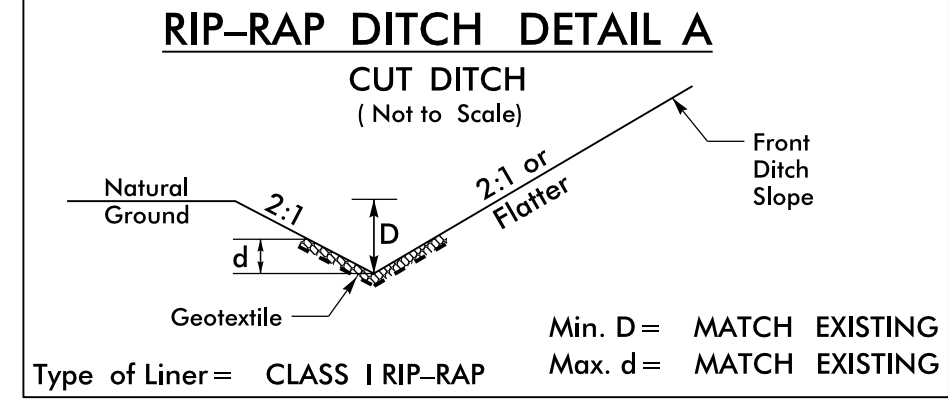
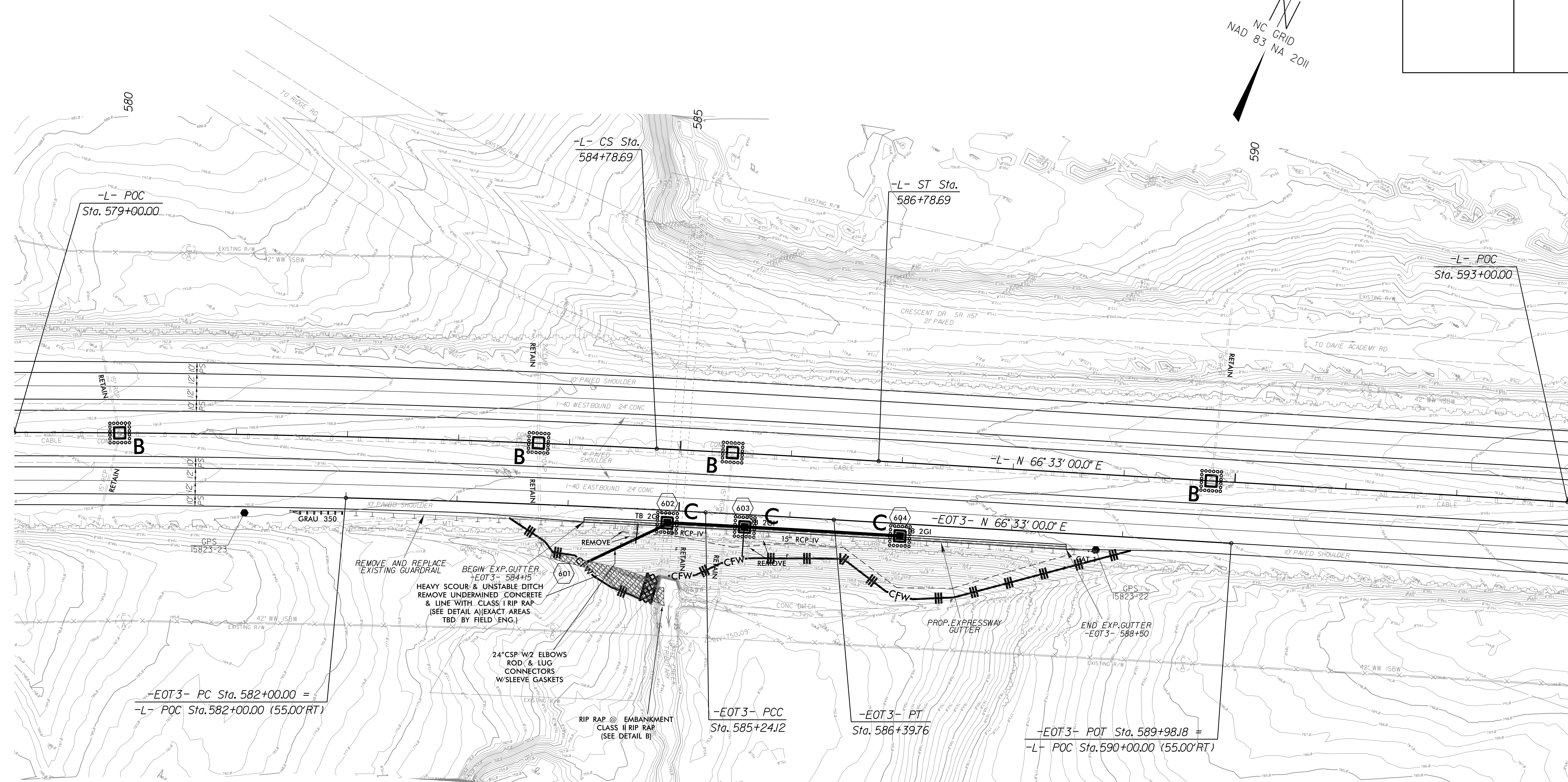
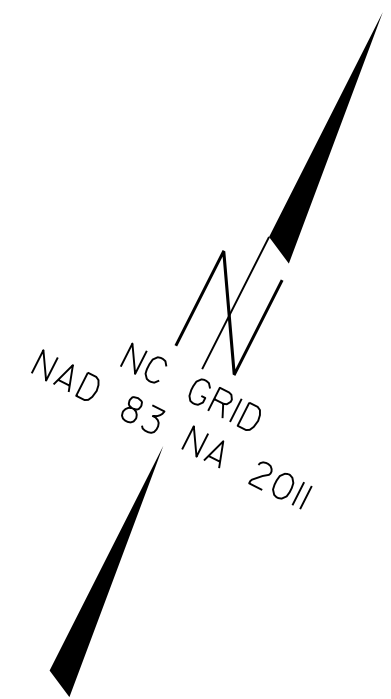
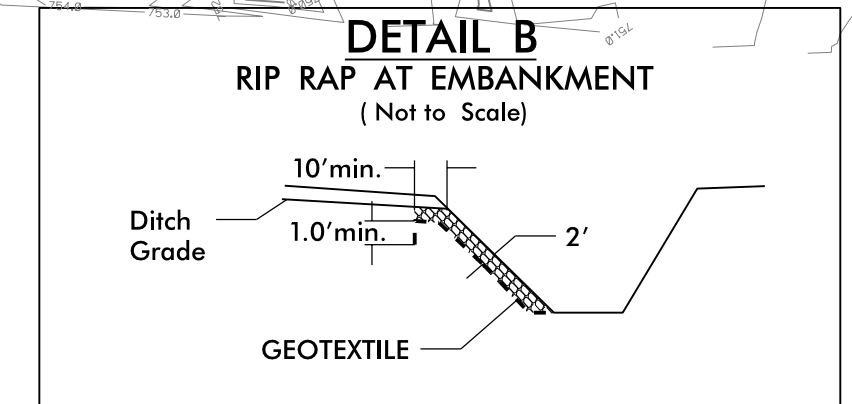


PROJECT REFERENCE NO.	SHEET NO.
1-5823	EC-6
RW SHEET NO.	
ROADWAY DESIGN ENGINEER	HYDRAULICS ENGINEER



-EOT3- 583+86 TO 584+86 RT, EST. 72 TONS,  
EST. 150 SY GEO FAB, EST. 46 CY DDE



-EOT3- 584+86 TO 584+96 RT

-L-	PI Sta = 573+42.47 Δ = 11° 24' 00.00" (RT) D = 0' 30" 00.00" L = 2,280.00 T = 1,433.78 R = 11,459.16	PIs Sta 585+45.36 Θs = 0° 30' 00.00" Ls = 200.00' LT = 133.33' ST = 66.67'
-----	---	--

-EOT2-	PI Sta 583+62.07 Δ = 1° 37' 42.4" (RT) D = 0' 30" 08.7" L = 324.12' T = 162.07' R = 11,404.16'	PI Sta 585+81.94 Δ = 0° 15' 54.1" (RT) D = 0' 13' 45.1" L = 115.64' T = 57.82' R = 25,000.00'
--------	---	--

NOTE:  
TEMPORARY SILT FENCE SHALL BE INSTALLED A MINIMUM OF 3 FEET FROM TOE OF FILL IN WETLAND AREAS

CLEARING AND GRUBBING  
EROSION CONTROL FOR  
CONSTRUCTION SHEET 6

NOTE:  
PLACE TEMPORARY ROCK SEDIMENT DAMS  
TYPE-B AND TEMPORARY ROCK SILT CHECKS  
TYPE-A AT DRAINAGE OUTLETS

20 NOV 2016 11:28  
 S:\Projects\1-5823-40-Dave\ErostonControl\15823.dwg, EC-6.dgn  
 8/17/99