

TIP PROJECT: U-4902D

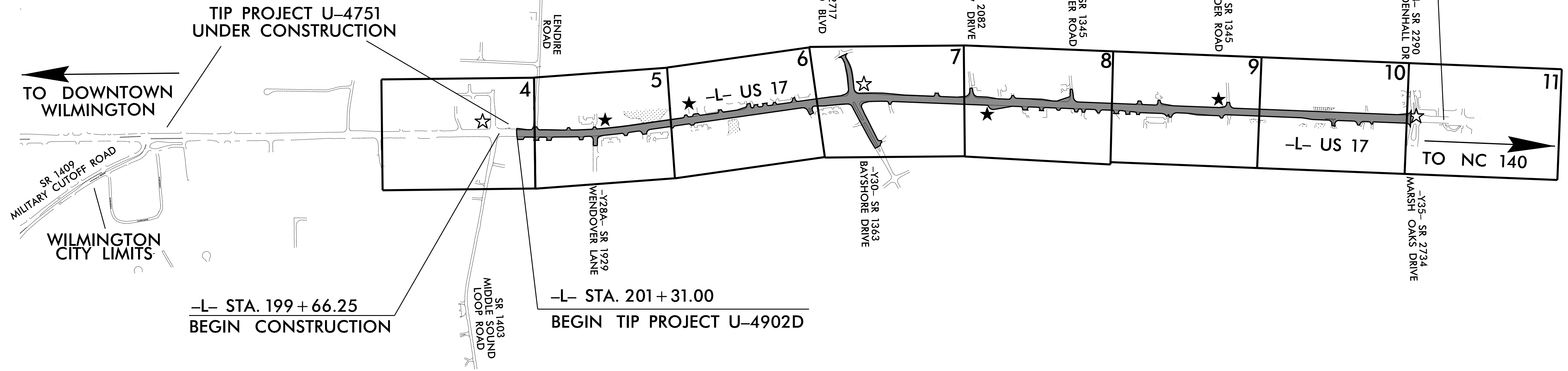
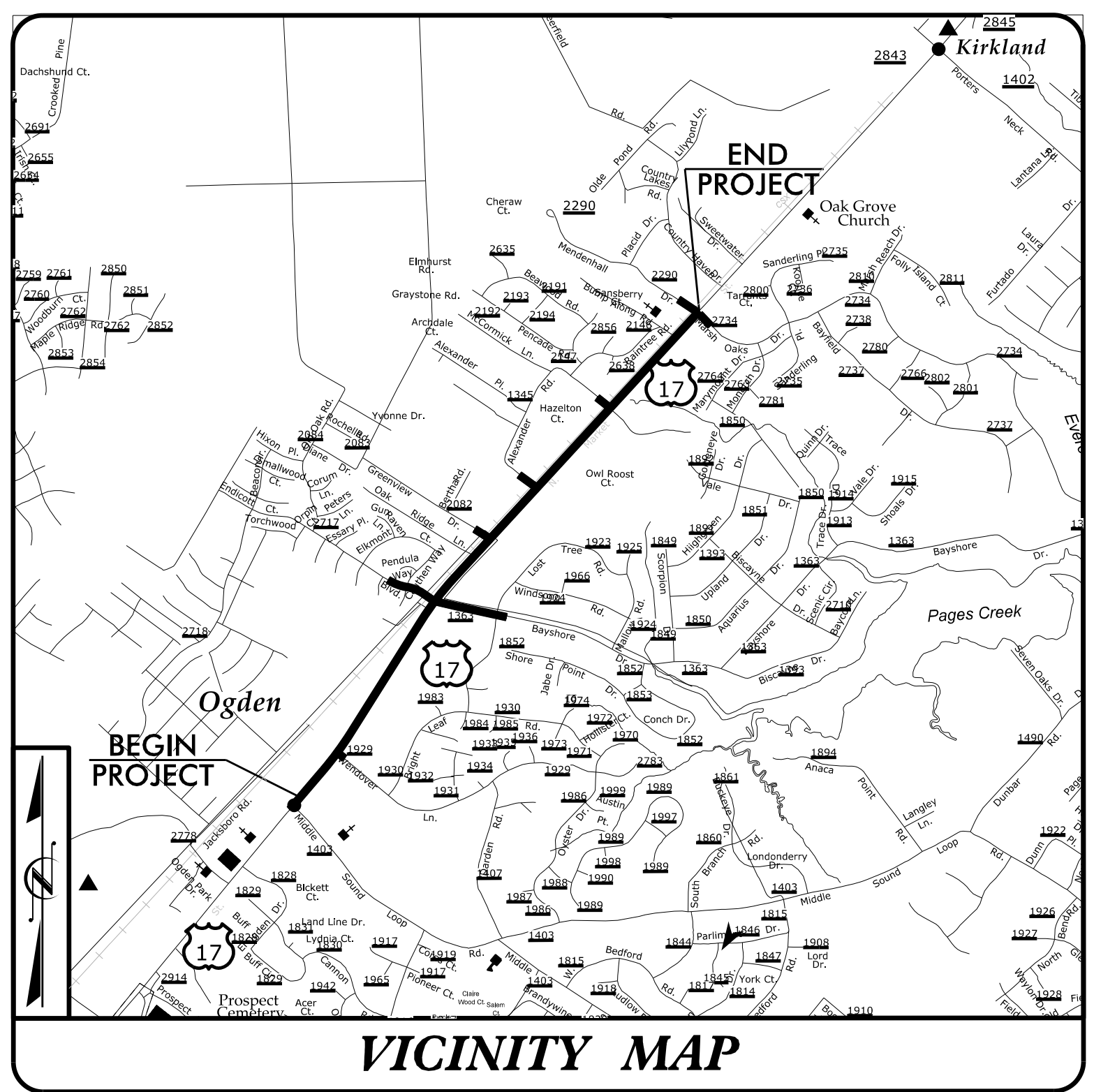
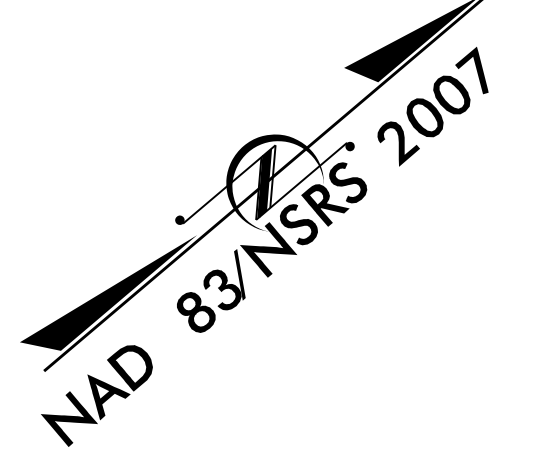
STATE OF NORTH CAROLINA
DIVISION OF HIGHWAYS

T.I.P. NO.	SHEET NO.
U-4902D	UO-1

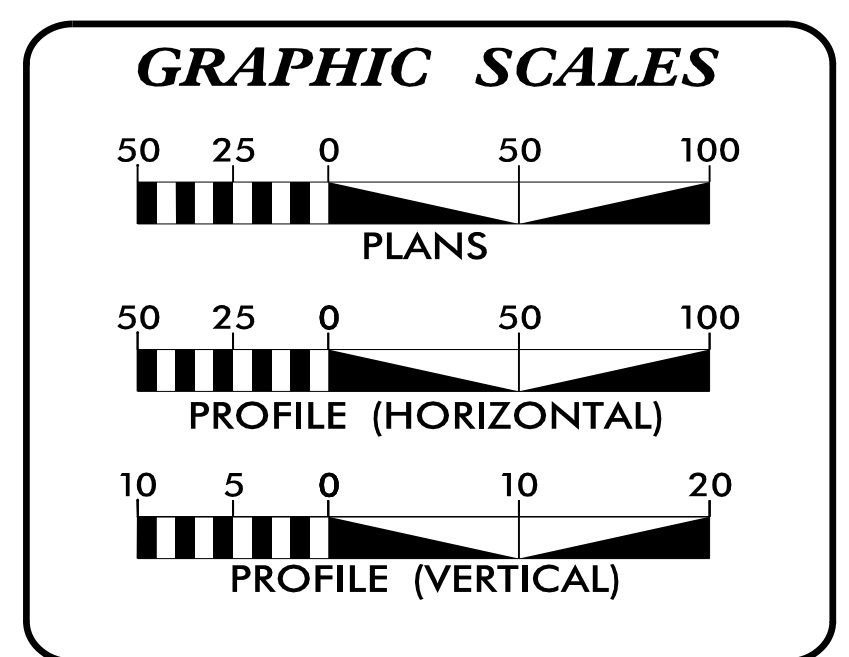
NOTE:
ALL UTILITY WORK SHOWN ON THIS SHEET WILL BE DONE BY OTHERS. NO PAYMENT WILL BE MADE TO THE CONTRACTOR FOR UTILITY WORK SHOWN ON THIS SHEET.

**UTILITIES BY OTHERS PLANS
NEW HANOVER COUNTY**

**LOCATION: US 17 (MARKET STREET) FROM
SR 1403 (MIDDLE SOUND LOOP ROAD)
TO SR 2290 (MENDENHALL DRIVE)/
SR 2734 (MARSH OAKS DRIVE)**
**TYPE OF WORK: UTILITY RELOCATION OF POWER,
COMMUNICATION, CATV AND GAS**



	EXISTING SIGNAL
	PROPOSED SIGNAL



INDEX OF SHEETS

SHEET NO.:	DESCRIPTION:
UO-1	TITLE SHEET
UO-02 THRU UO-09	UBO PLAN SHEETS

UTILITY OWNERS WITH CONFLICTS

(A) POWER - DUKE ENERGY
(B) PHONE - AT&T
(C) PHONE - AT&T
(D) CATV - SPECTRUM
(E) COMM - LUMOS
(F) COMM - MCNC
(G) COMM - CENTURYLINK
(H) GAS - PNG

PREPARED IN THE OFFICE OF:

M A Engineering Consultants, Inc.
598 East Chatham Street Suite 137 Cary, NC 27511
Phone: 919.297.0220 Fax: 919.297.0221

NC License: F-0160

WEBB WHITE PROJECT UTILITY COORDINATOR

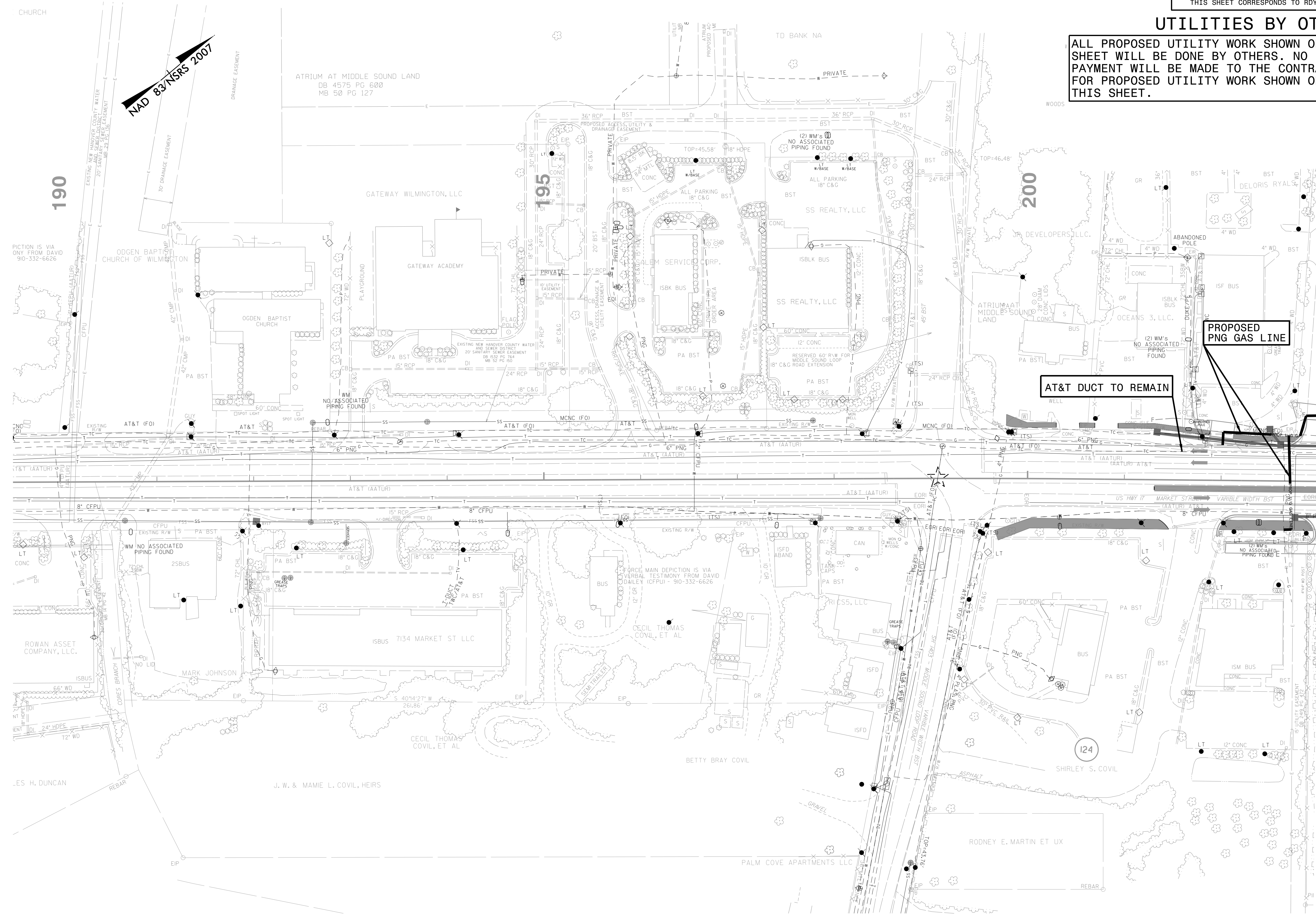
**DIVISION OF HIGHWAYS
DIVISION 3**
5501 BARBADOS BLVD.
CASTLE HAYNE, NC 28429

KEVIN BOWEN, PE DIVISION CONSTRUCTION ENGINEER
LONNY SLEEPER DIVISION UTILITY COORDINATOR

9/13/2018 3:30:14 PM P:\JOBS\0696\020\U4902D\Utilities\U4902D_UO_1.TSH.dgn

UTILITIES BY OTHERS

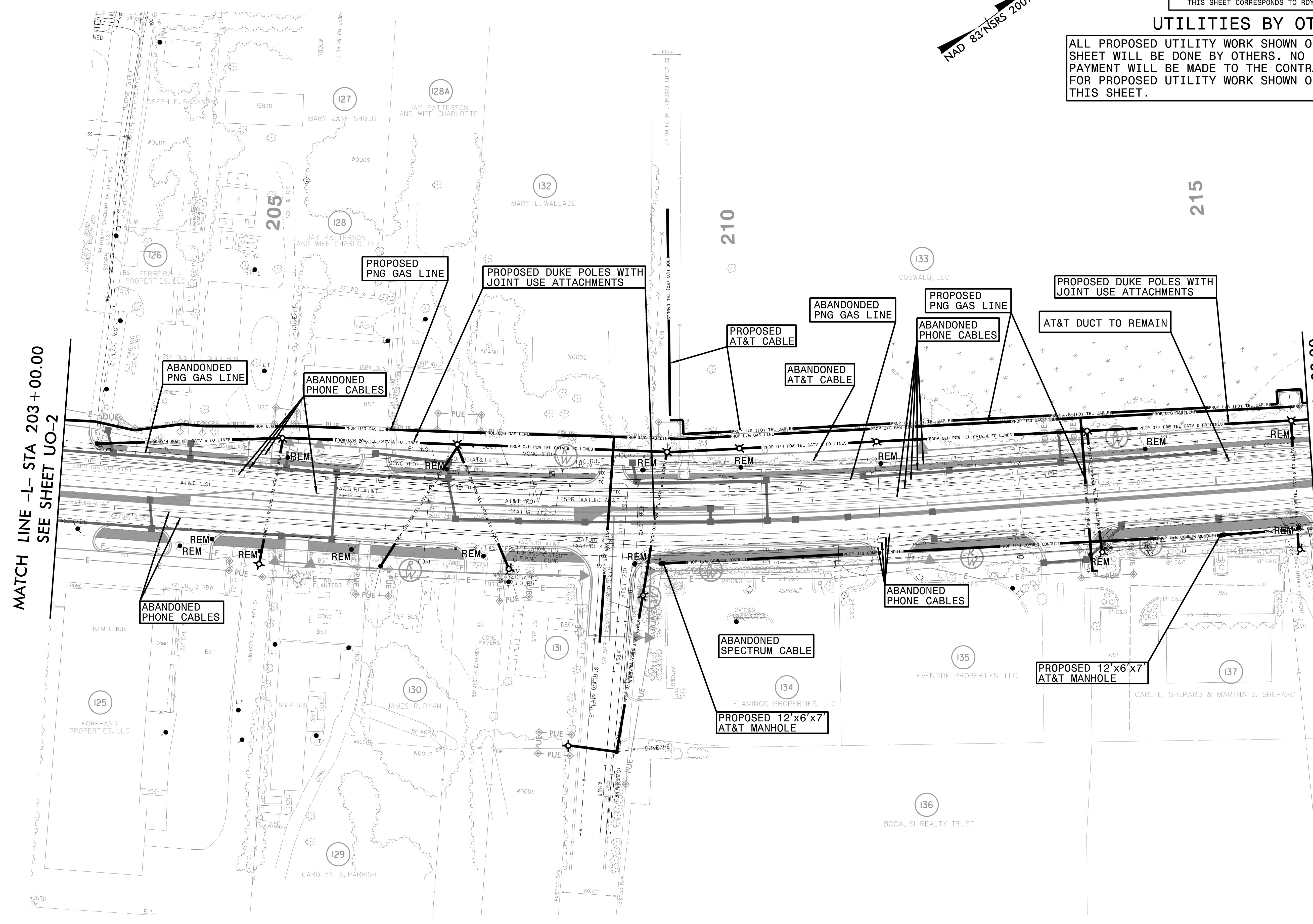
ALL PROPOSED UTILITY WORK SHOWN ON THIS SHEET WILL BE DONE BY OTHERS. NO PAYMENT WILL BE MADE TO THE CONTRACTOR FOR PROPOSED UTILITY WORK SHOWN ON THIS SHEET.



MATCH LINE -L- STA 203 + 00.00
SEE SHEET UO-3

UTILITIES BY OTHERS

ALL PROPOSED UTILITY WORK SHOWN ON THIS SHEET WILL BE DONE BY OTHERS. NO PAYMENT WILL BE MADE TO THE CONTRACTOR FOR PROPOSED UTILITY WORK SHOWN ON THIS SHEET.

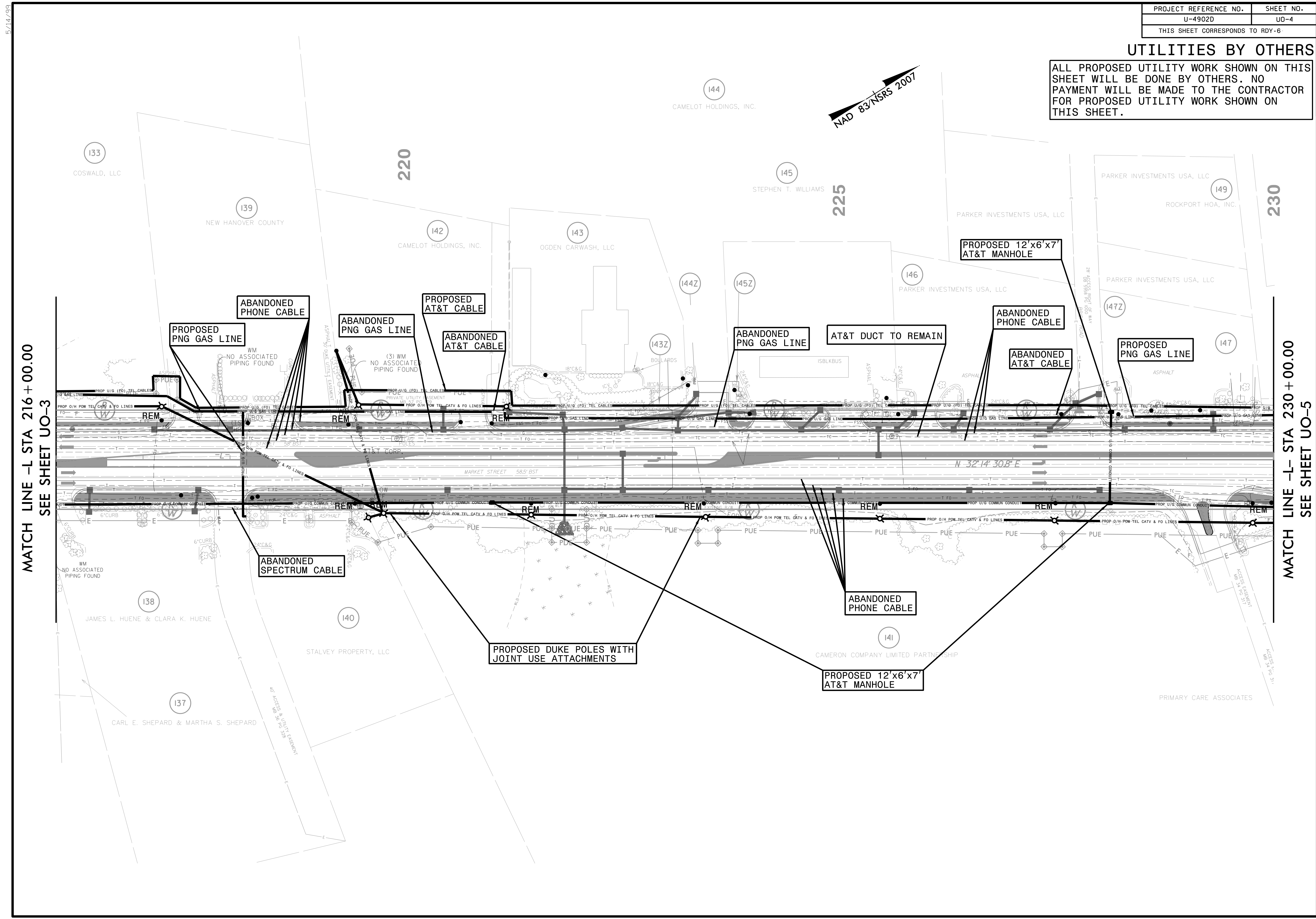


5/14/99

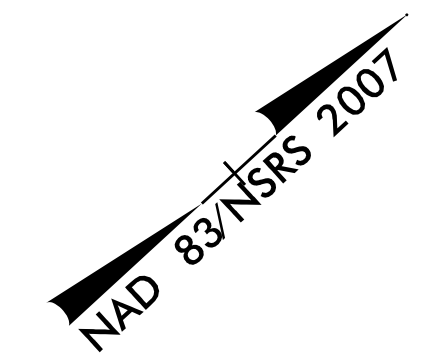
PROJECT REFERENCE NO.	SHEET NO.
U-4902D	UD-4
THIS SHEET CORRESPONDS TO RDY-6	

UTILITIES BY OTHERS

ALL PROPOSED UTILITY WORK SHOWN ON THIS SHEET WILL BE DONE BY OTHERS. NO PAYMENT WILL BE MADE TO THE CONTRACTOR FOR PROPOSED UTILITY WORK SHOWN ON THIS SHEET.

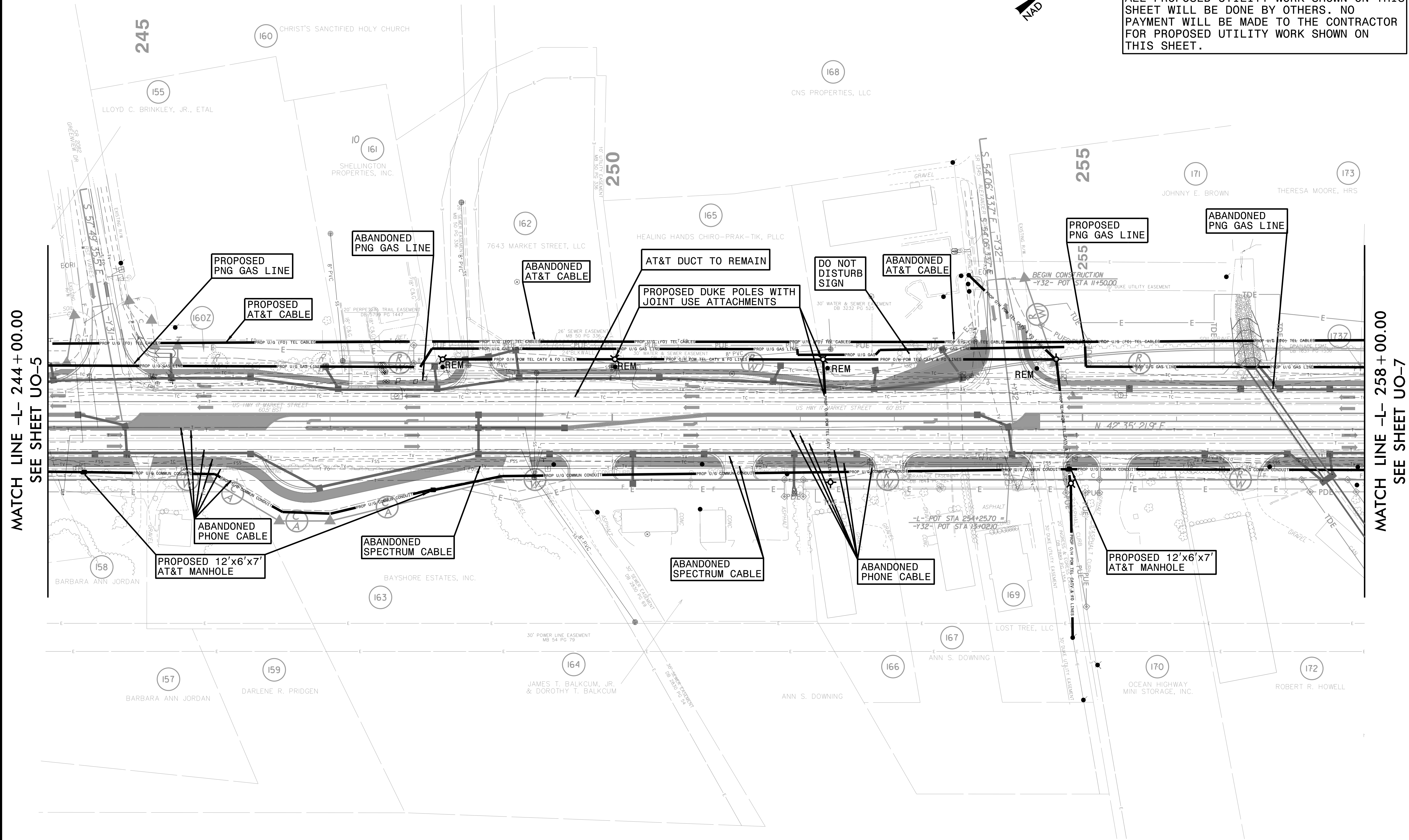


5/14/99



UTILITIES BY OTHERS

ALL PROPOSED UTILITY WORK SHOWN ON THIS SHEET WILL BE DONE BY OTHERS. NO PAYMENT WILL BE MADE TO THE CONTRACTOR FOR PROPOSED UTILITY WORK SHOWN ON THIS SHEET.

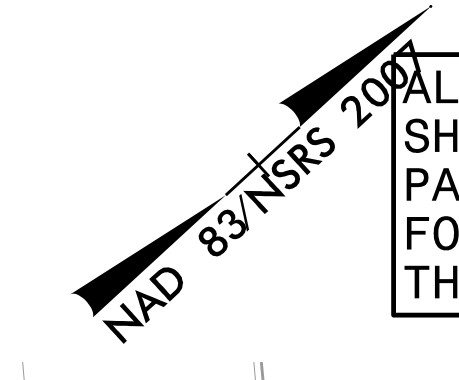


MATCH LINE -L- 244+00.00
SEE SHEET UO-5

MATCH LINE -L- 258+00.00
SEE SHEET UO-7

UTILITIES BY OTHERS

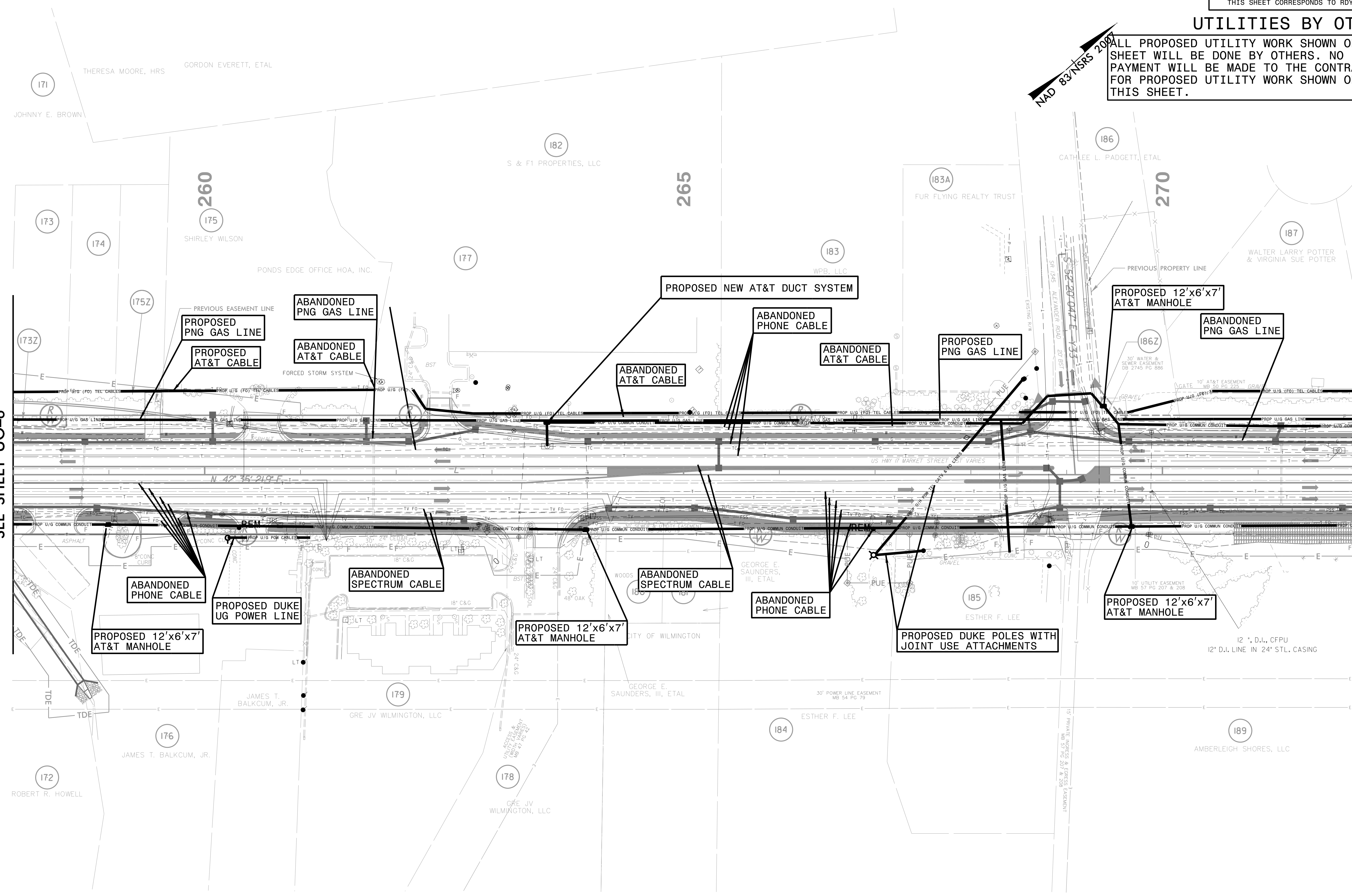
ALL PROPOSED UTILITY WORK SHOWN ON THIS SHEET WILL BE DONE BY OTHERS. NO PAYMENT WILL BE MADE TO THE CONTRACTOR FOR PROPOSED UTILITY WORK SHOWN ON THIS SHEET.



5/14/99

MATCH LINE -L- STA 258+00.00
SEE SHEET UO-6

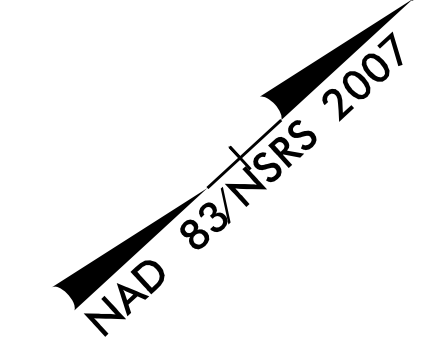
MATCH LINE -L- STA 272+00.00
SEE SHEET UO-8



171 THERESA MOORE, HRS GORDON EVERETT, ETAL
 173 174 SHIRLEY WILSON
 175 260
 177 S & F1 PROPERTIES, LLC
 182 265
 183 WPB, LLC
 183A FUR FLYING REALTY TRUST
 186 CATHLEE L. PADGETT, ETAL
 270
 187 WALTER LARRY POTTER & VIRGINIA SUE POTTER
 173Z 175Z
 173Z 174Z
 175Z
 176 JAMES T. BALKCUM, JR.
 177 PONDS EDGE OFFICE HOA, INC.
 178 GRE JV WILMINGTON, LLC
 179 GRE JV WILMINGTON, LLC
 180 CITY OF WILMINGTON
 181 GEORGE E. SAUNDERS, III, ETAL
 182
 183
 184 ESTHER F. LEE
 185 ESTHER F. LEE
 186
 187
 188
 189 AMBERLEIGH SHORES, LLC

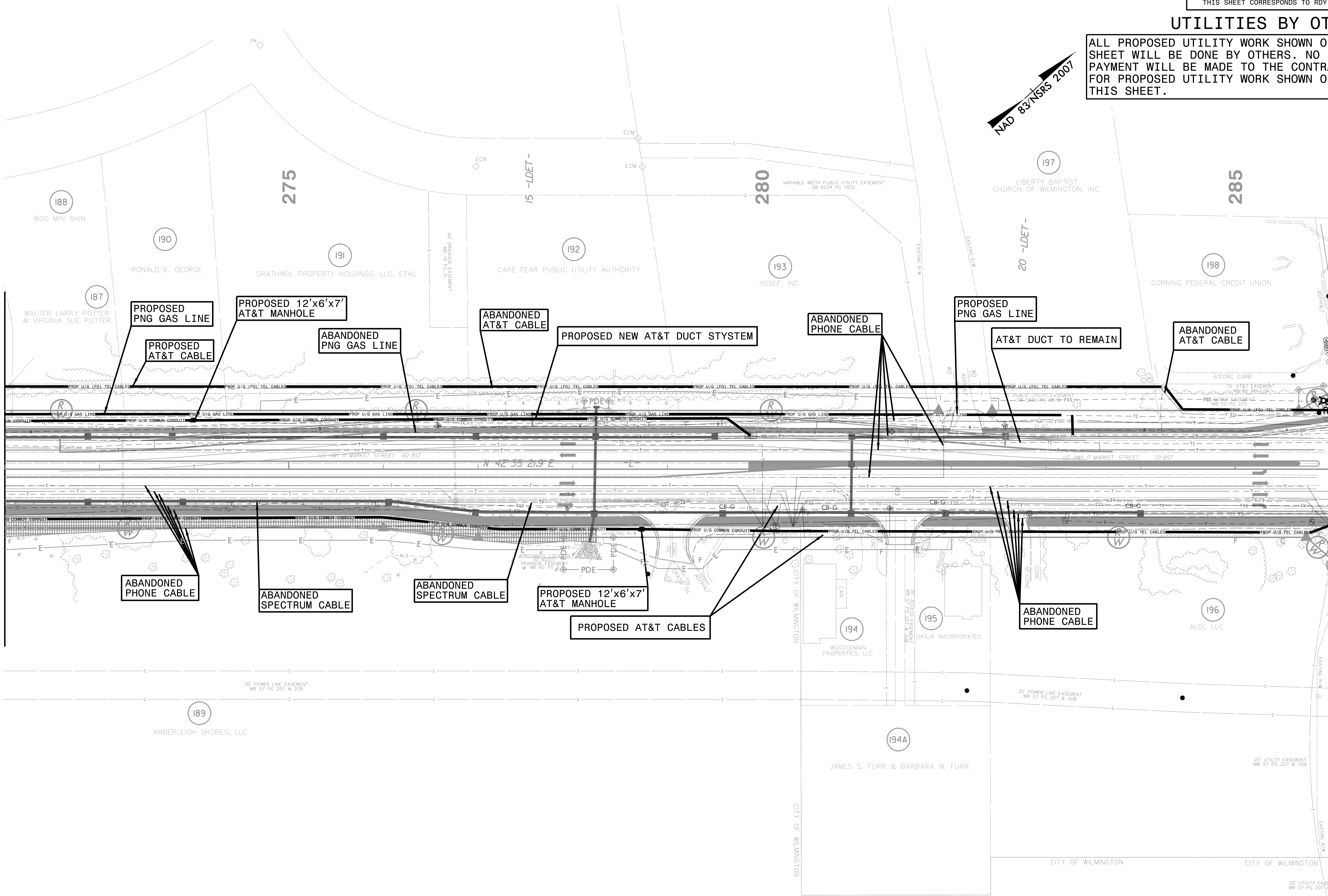
UTILITIES BY OTHERS

ALL PROPOSED UTILITY WORK SHOWN ON THIS SHEET WILL BE DONE BY OTHERS. NO PAYMENT WILL BE MADE TO THE CONTRACTOR FOR PROPOSED UTILITY WORK SHOWN ON THIS SHEET.



MATCH LINE -L- STA 272 + 00.00
SEE SHEET UO-7

MATCH LINE -L- STA 286 + 00.00
SEE SHEET UO-9



275

280

285

188
BOO MIN SHIN

190
RONALD E. GEORGE

191
GRATHWOL PROPERTY HOLDINGS, LLC, ETAL

192
CAPE FEAR PUBLIC UTILITY AUTHORITY

193
YOSEF, INC.

197
LIBERTY BAPTIST CHURCH OF WILMINGTON, INC.

198
CORNING FEDERAL CREDIT UNION

187
WALTER LARRY POTTER & VIRGINIA SUE POTTER

PROPOSED PNG GAS LINE
PROPOSED AT&T CABLE

PROPOSED 12'x6'x7' AT&T MANHOLE

ABANDONED PNG GAS LINE

ABANDONED AT&T CABLE

PROPOSED NEW AT&T DUCT SYSTEM

ABANDONED PHONE CABLE

PROPOSED PNG GAS LINE

AT&T DUCT TO REMAIN

ABANDONED AT&T CABLE

ABANDONED PHONE CABLE

ABANDONED SPECTRUM CABLE

ABANDONED SPECTRUM CABLE

PROPOSED 12'x6'x7' AT&T MANHOLE

PROPOSED AT&T CABLES

ABANDONED PHONE CABLE

189
AMBERLEIGH SHORES, LLC

194
WOODMAN PROPERTIES, LLC

195
DASJA INCORPORATED

196
ALDI, LLC

194A
JAMES S. FURR & BARBARA W. FURR

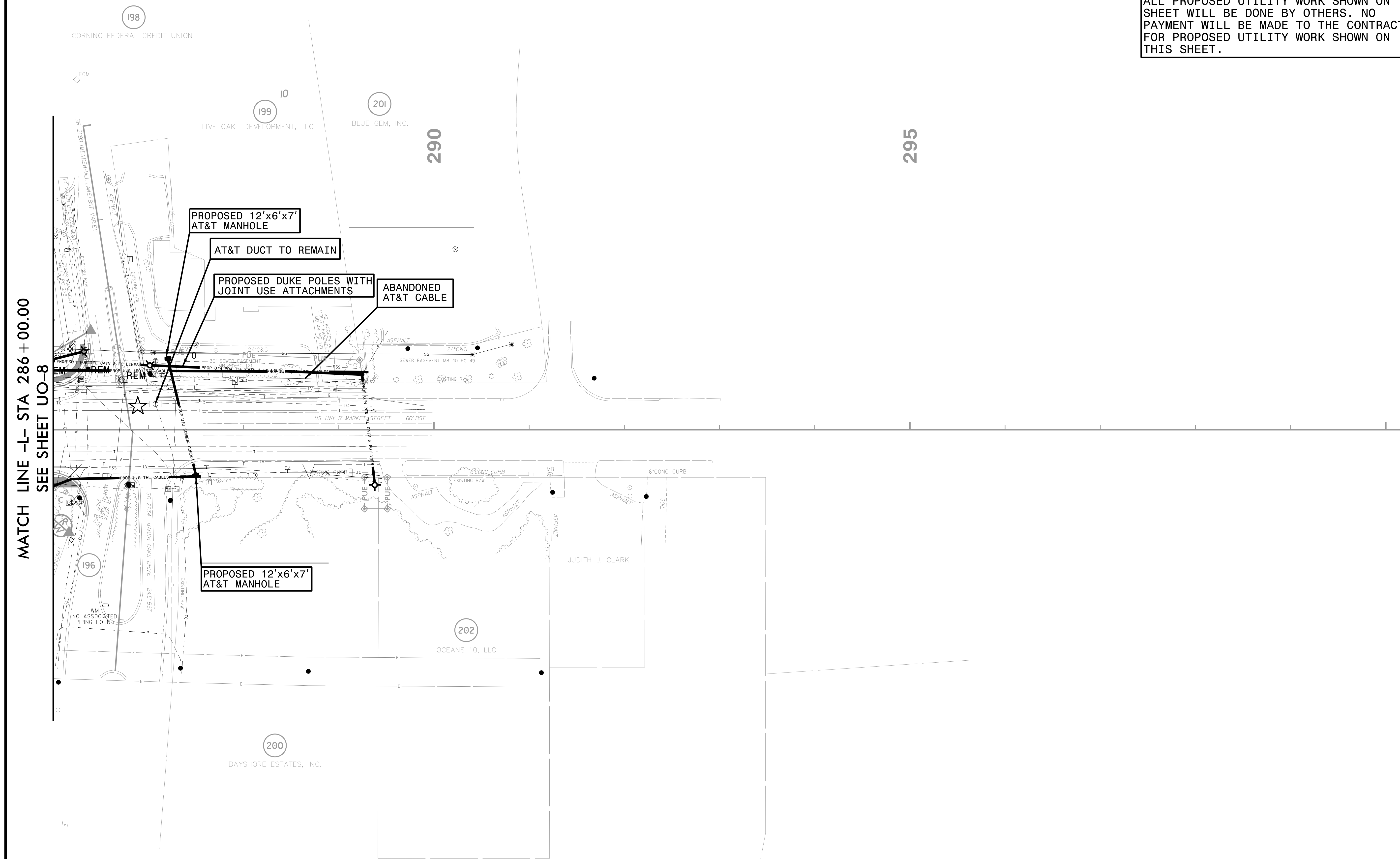
CITY OF WILMINGTON

CITY OF WILMINGTON

20' UTILITY EASEMENT
MB 57 PG 207 & 208

UTILITIES BY OTHERS

ALL PROPOSED UTILITY WORK SHOWN ON THIS SHEET WILL BE DONE BY OTHERS. NO PAYMENT WILL BE MADE TO THE CONTRACTOR FOR PROPOSED UTILITY WORK SHOWN ON THIS SHEET.



MATCH LINE -L- STA 286 + 00.00
SEE SHEET UO-8

290

295

198

199

201

196

202

200