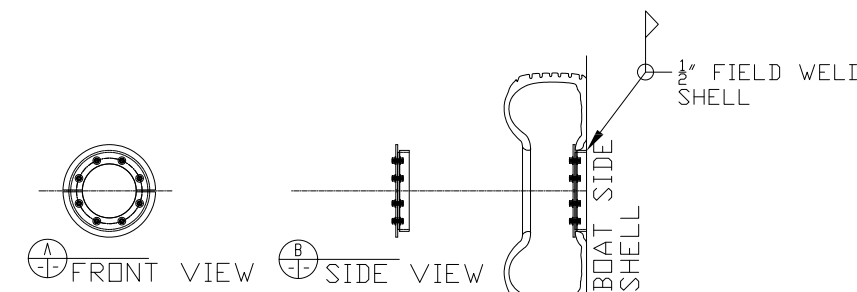


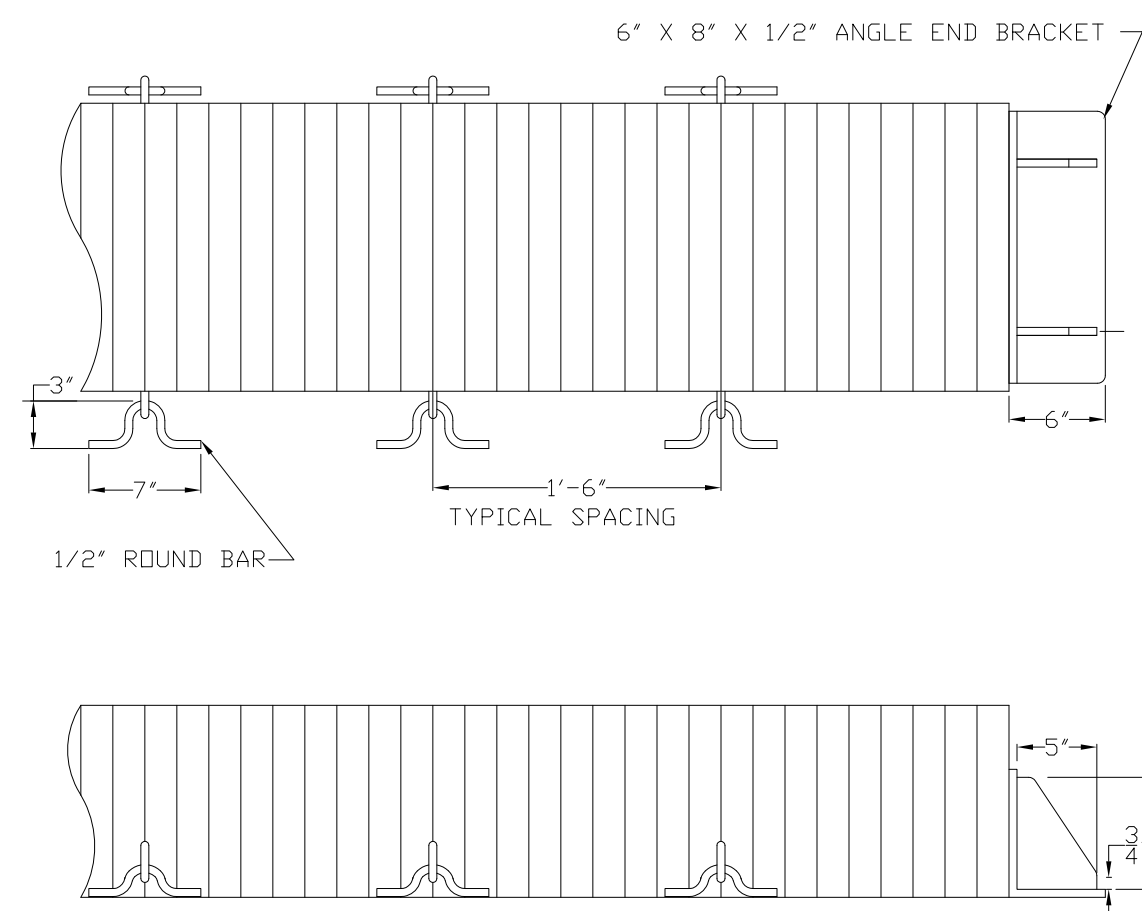
SIDE SHELL TIRES DETAIL "A"

32 EACH (16 PER SIDE)
30"H X 15"W X 13.5" RIM
SCALE: 3/8" = 1'-0"

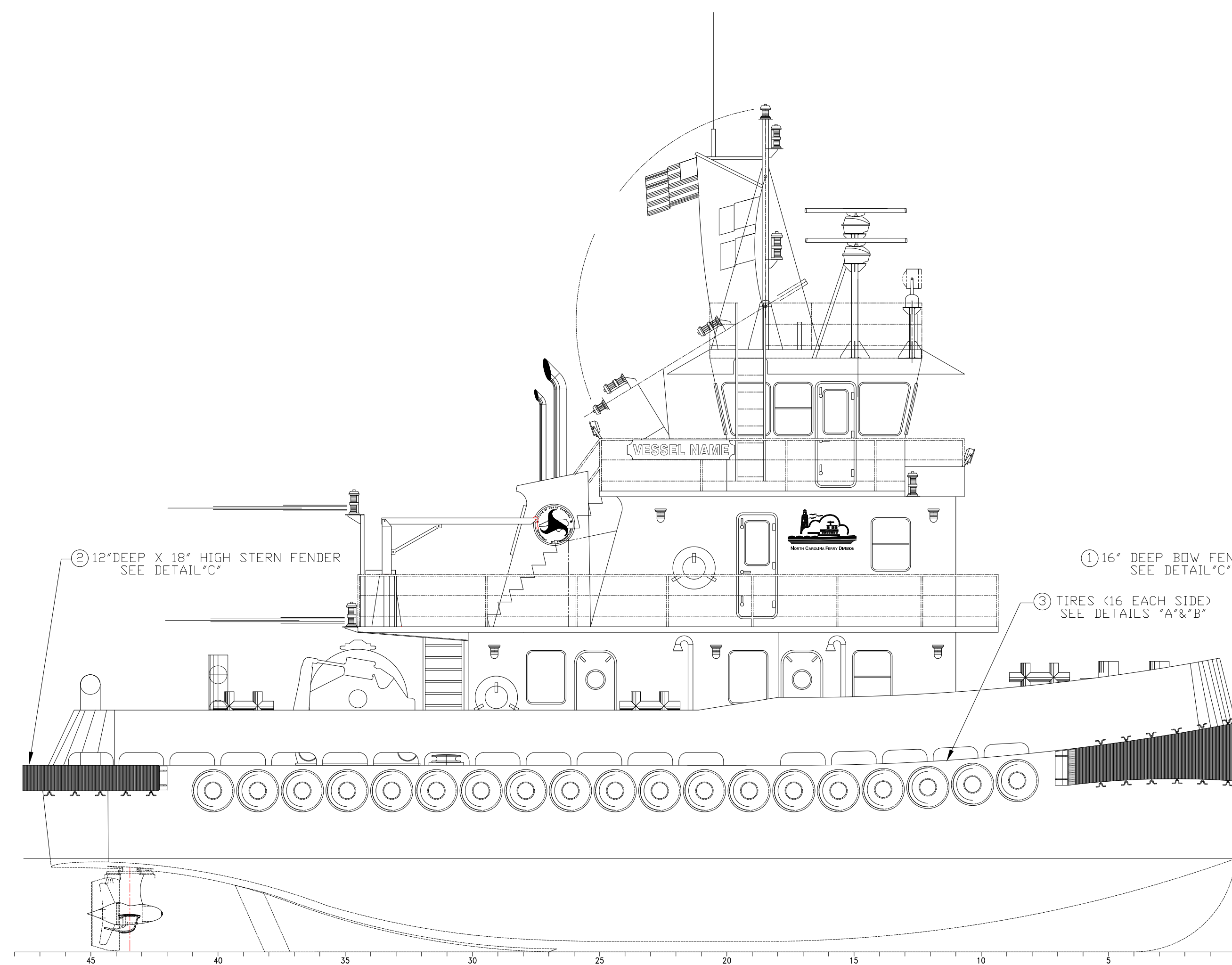
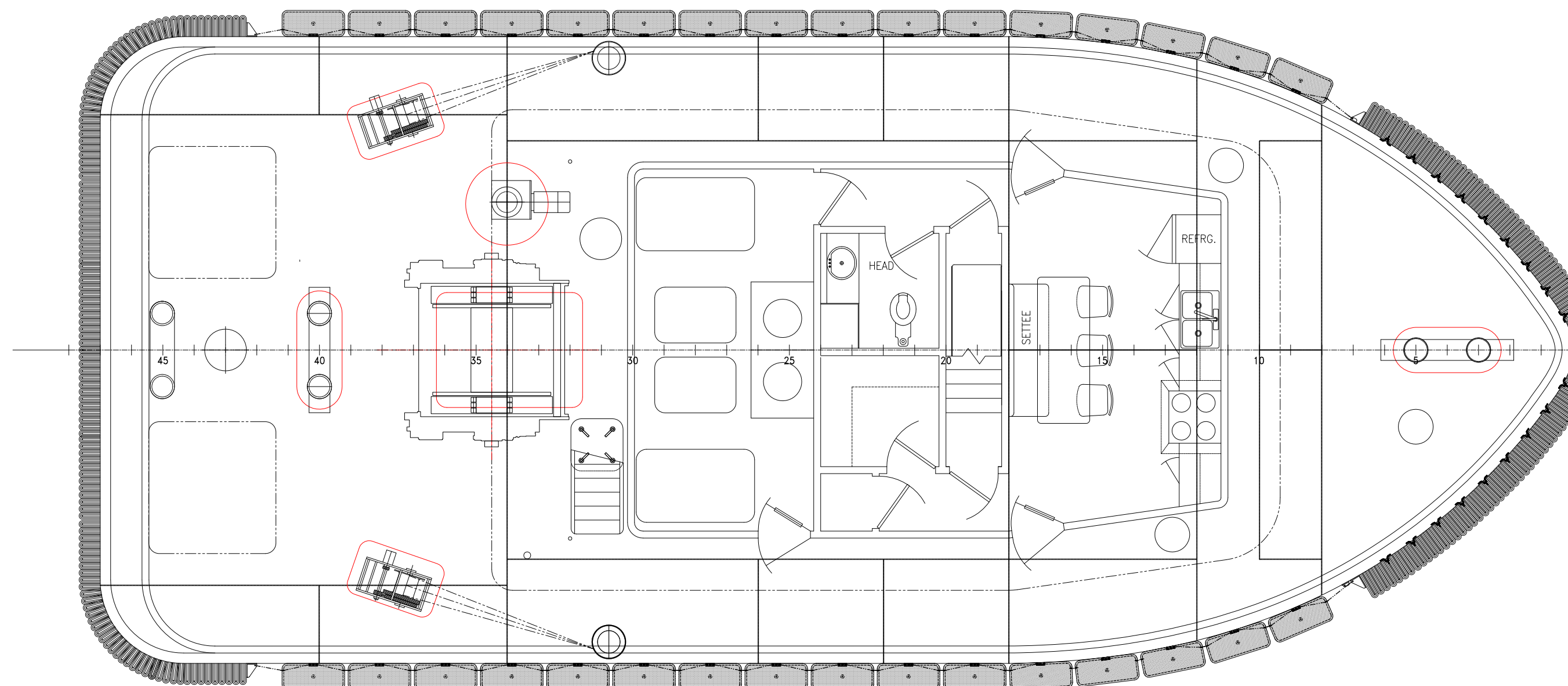


DETAIL B

TIRE MOUNTING DETAIL BUMPER
TIRE HUB FOR 13.5" RIM
SCHUYLER MARITIME TYPE OR
EQUAL



BOW AND STERN FENDER DETAIL "C"
STERN FENDER SHOWN
SCALE: 1" = 1'-0"



ELEVATION 1-1A
OUTBOARD PROFILE

SCALE: 3/16" = 1'-0"

BILL OF MATERIALS

BUMPERS & TIRE SCHEDULE

ITEM	QTY.	DESCRIPTION	MANUFACTURER #	REMARKS
1	AR	FENDER, BOW, 16" DEEP, CHAIN LINK HANGER		DR EQUAL
2	AR	FENDER, STERN, 12" DEEP X 18" HIGH, CHAIN LINK HANGER		DR EQUAL
3	38	TIRE, AIRCRAFT, 30x11.5-14, 30"HX11.5"WX10.0"RIM		
4	38	MOUNTING HUB FOR TIRE, AIRCRAFT, 30x11.5-14, 10.0"RIM		DR EQUAL

GENERAL NOTES

- STRUCTURAL STEEL TO MEET ABS GRADE A STANDARDS
- UNBRACKETED STIFFENERS OF SHELL, WATERTIGHT AND DILIGHT BHDS AND HOUSE FRONTS ARE TO HAVE DOUBLE CONT. WELDS FOR 1/10 OF THEIR LENGTH AT EACH END.
- UNBRACKETED STIFFENERS OF NONTIGHT STRUCTURAL BHDS, DECKHOUSE SIDES AND AFTER ENDS ARE TO HAVE A PAIR OF MATCHING INTERMITTENT WELDS AT EACH END.
- THE WELDING OF LONGITUDINALS MAY BE AS REQ. UNDER FRAMES OR DECK ABOVE. IN ADDITION, THEY ARE TO HAVE DOUBLE CONTINUOUS WELDS AT THE END AND IN WAY OF TRANSVERSES EQUAL IN LENGTH TO THE DEPTH OF THE LONGITUDINAL. FOR DECK LONGITUDINALS ONLY A MATCHED PAIR OF WELDS IS REQ. AT THE TRANSVERSES. FOR SLAB LONGITUDINALS THE ATTACHMENT IS TO BE MADE DOUBLE CONTINUOUS
- SHIPYARD TO PROVIDE RATHOLES, SNIPES & CUTOUTS TO ALLOW FOR ADEQUATE DRAINAGE TO THE BILGE AT CENTERLINE.

PROFESSIONAL RIGHTS
This document discloses matter in which DeJong & Lebet, Incorporated has proprietary rights. Neither receipt nor possession thereof confers or transfers any right to reproduce, disclose or use in any manner the information contained herein, except by written permission or written agreement with DeJong & Lebet, Incorporated.
In the event of a purchase of this document the purchaser is authorized to contract to more than one device in accord herewith, unless otherwise agreed to in writing by DeJong & Lebet, Incorporated.
© 2018 by DeJong & Lebet, Inc.

DeJong & Lebet, Inc.

Naval Architects
Marine Engineers
Consultants
Surveyors

1734 Emerson Street
Jacksonville, Florida 32207
www.dejongandlebet.com

Phone: (904) 399-5673
Fax: (904) 399-1522
info@dejongandlebet.com

Title: 70.5'x30'x11' NCDOT TOWBOAT

RUBBER FENDER & TIRE LAYOUT

Dwg. No. 17-1372-684

Alt. No. 1
Sh. 1 of 1

Drawn By: JACOB CONNALLY

Date: JUNE 05, 2018

App'd By:

Scale: SEE DWG

ABS App'l:

USCG App'l: