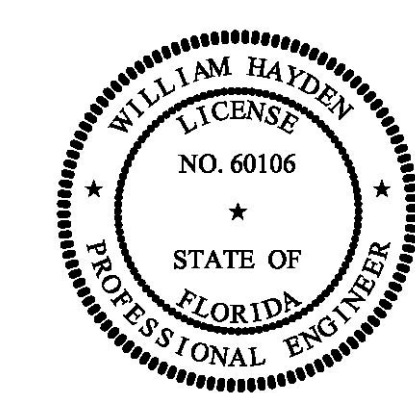


WELD SCHEDULE-TYPICAL

WELD DBL CONT. FOR EACH END	3/16 1/2 1/2-10	GIRDERS TO DECK PLATE
WELD DBL CONT. FOR EACH END	3/16 1/2 1/2-12	1. STIFFENERS TO DECK PLATE 2. STIFFENERS TO BHDs
	3/16	1. CORNER BRACKETING 2. STIFFENER LAPS
	3/16 1/2 1/2-12	2. MULLIONS @ ENDS
	3/16 1/2 1/2-12	LOWER BULKHEAD EDGE TO DECKS
	3/16 1/2 1/2-12	UPPER BULKHEAD EDGE TO DECKS



DeJong & Lebet, Inc.

Naval Architects
Marine Engineers
Consultants
Surveyors

1734 Emerson Street
Jacksonville, Florida 32207
www.dejongandlebet.com

Phone: (904) 599-3673
Fax: (904) 599-1522
Info@dejongandlebet.com

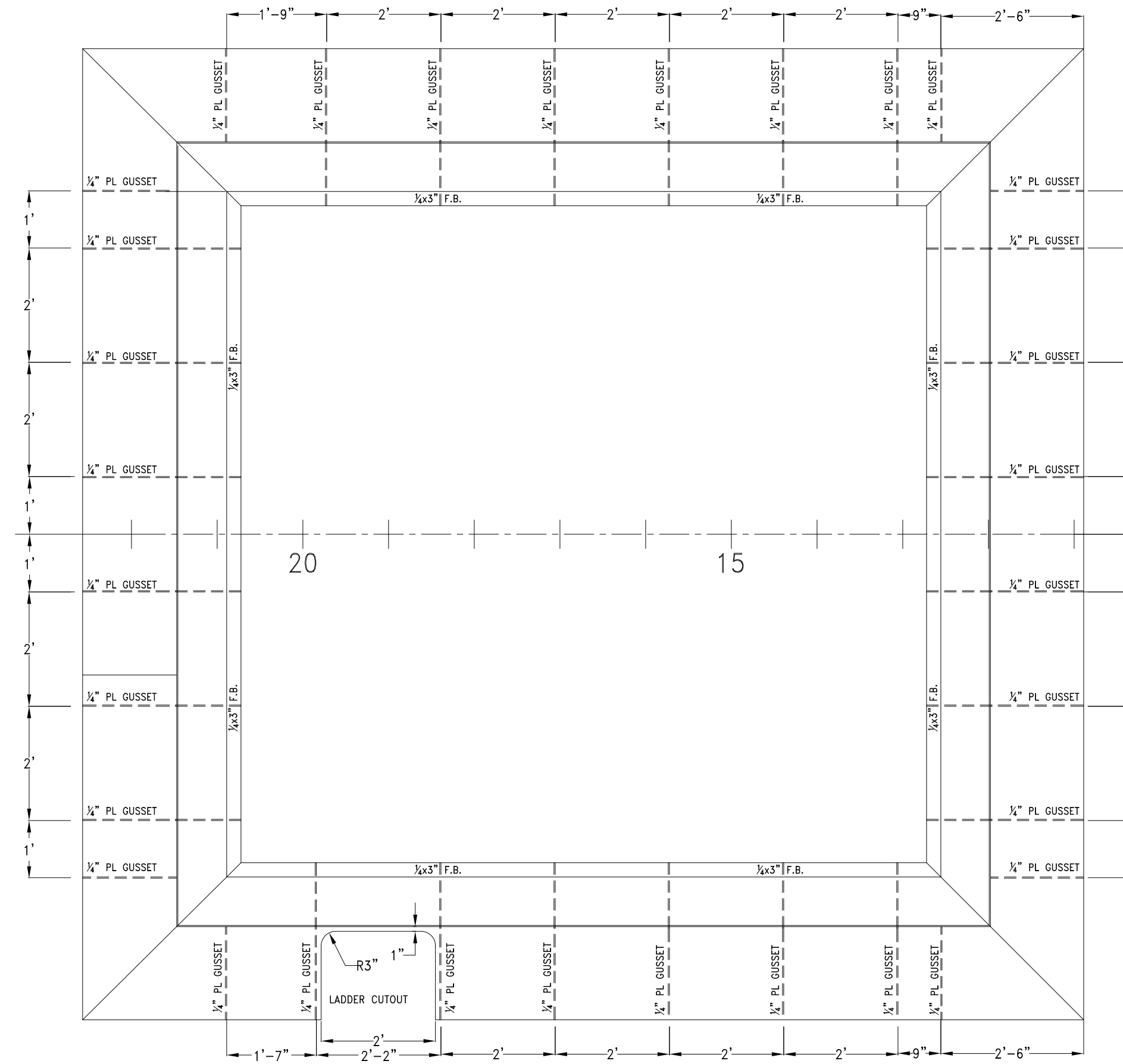
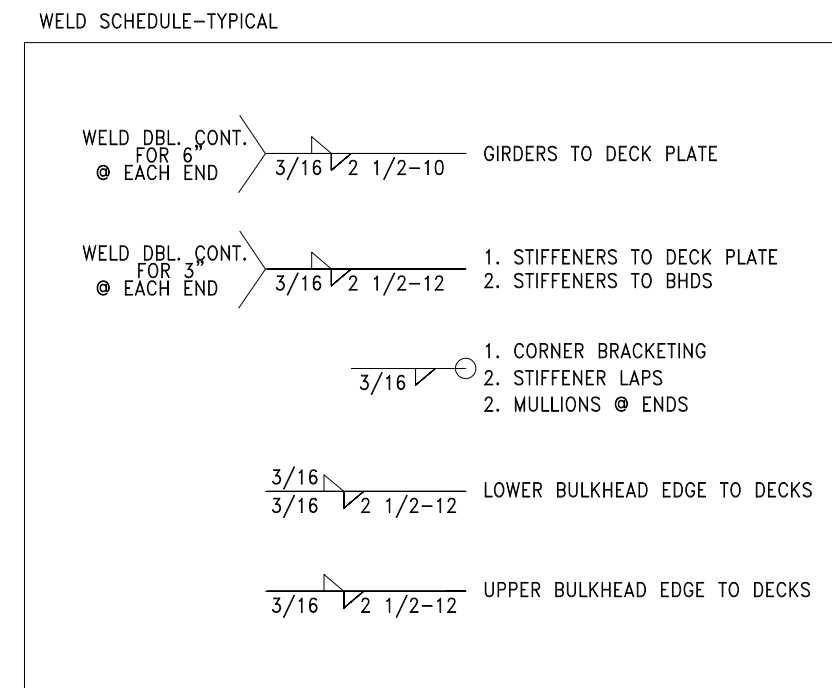
Title: 70.5'x30'x11' NCGDOT TOWBOAT

PILOTHOUSE STRUCTURAL DETAILS

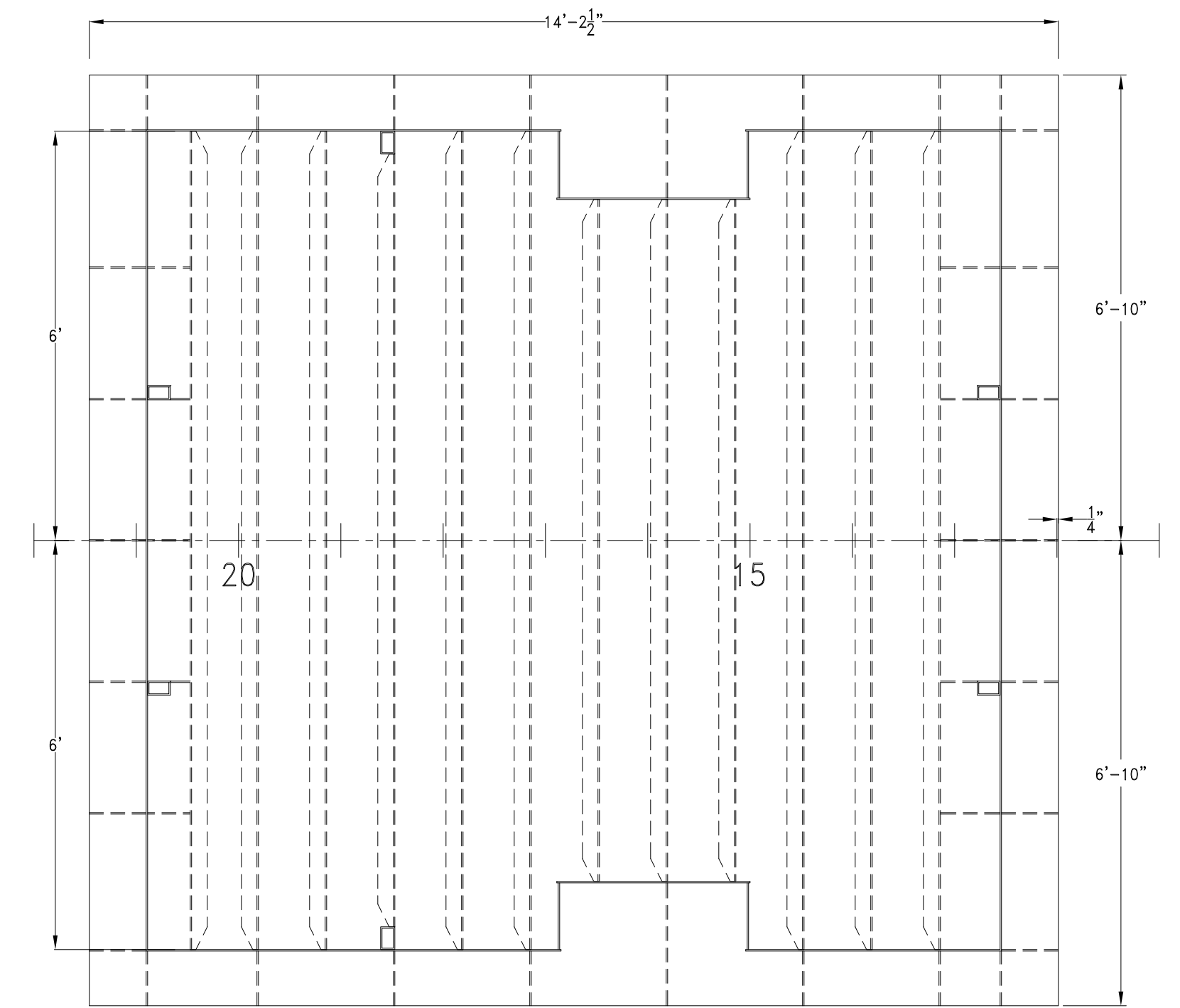
Dwg. No. 17-1372-154 Alt. No. 0 Sht. 1 of 2

Drawn By: JACOB CONNALLY Date: JUNE 05, 2018
Checked By: _____ Date: _____
App'd By: _____ Scale: 1/2" = 1'-0"
ABS App'l: _____ USCG App'l: _____

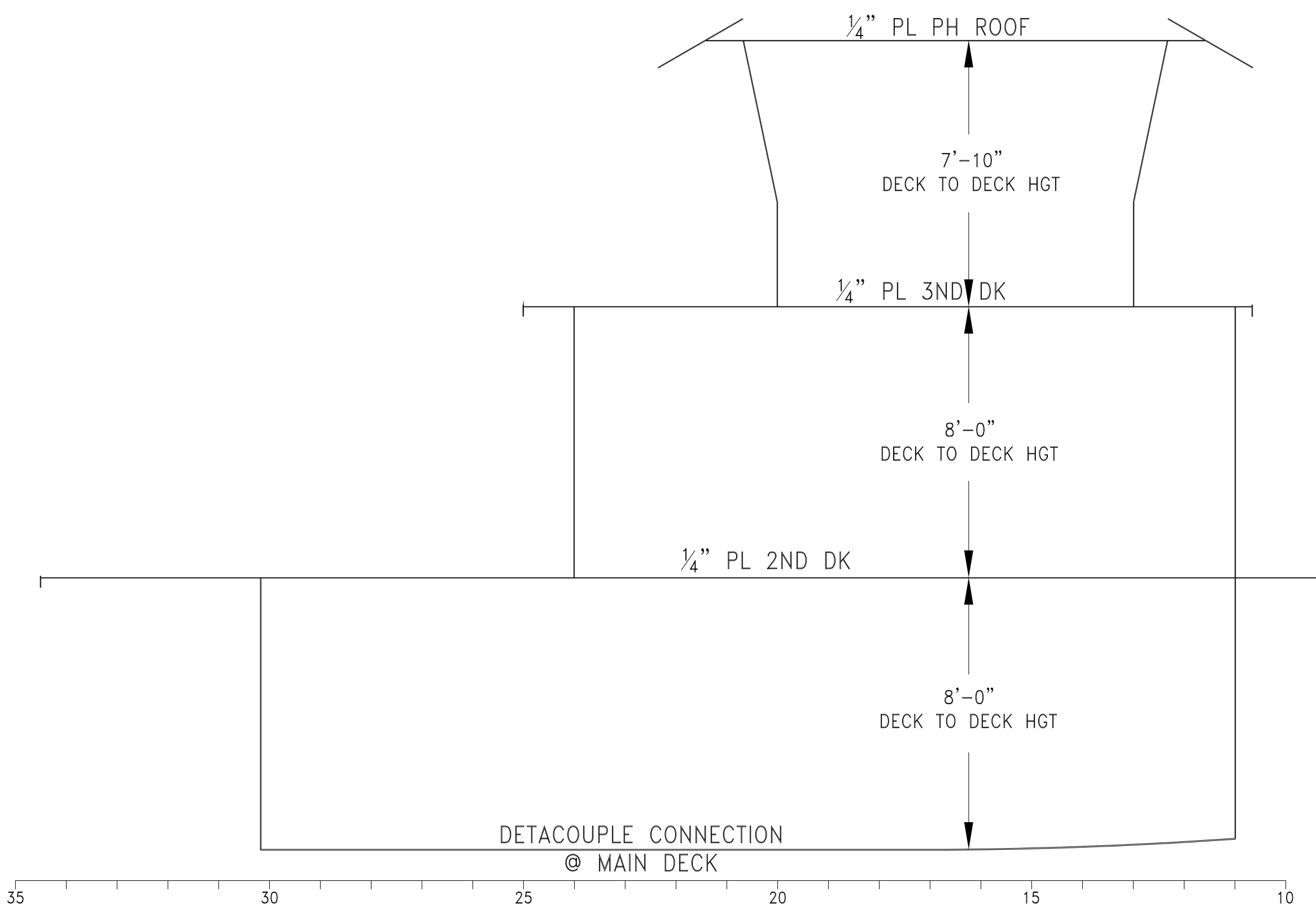
- GENERAL NOTES -	
NO.	DESCRIPTION
1.	STRUCTURAL STEEL TO MEET ABS GRADE A STANDARDS
2.	UNBRACKETED STIFFENERS OF SHELL, WATERTIGHT AND OILTIGHT BHDS AND HOUSE FRONTS ARE TO HAVE DOUBLE CONT. WELDS FOR 1/10 OF THEIR LENGTH AT EACH END.
3.	UNBRACKETED STIFFENERS OF NONOILTIGHT STRUCTURAL BHDS, DECKHOUSE, SIDES AND AFTER ENDS ARE TO HAVE A PAIR OF MATCHING INTERMITTENT WELDS AT EACH END.
4.	THE WELDING OF LONGITUDINALS MAY BE AS REQ. UNDER FRAMES OR DECK'S ABOVE, IN ADDITION, THEY ARE TO HAVE DOUBLE CONTINUOUS WELDS AT THE END AND IN WAY OF TRANSVERSES EQUAL IN LENGTH TO THE DEPTH OF THE LONGITUDINAL. FOR DECK LONGITUDINALS ONLY A MATCHED PAIR OF WELDS IS REQ. AT THE TRANSVERSES. FOR SLAB LONGITUDINALS THE ATTACHMENT IS TO BE MADE DOUBLE CONTINUOUS
5.	FILLET WELDS OF A SIZE w WHICH IS 0.3 TIMES THE THICKNESS OF THE THINNER PLATE BUT NEED NOT BE GREATER THAN 5/16 IN.
6.	SHIPYARD TO PROVIDE RATHOLES, SNIPES & CUTOUTS TO ALLOW FOR ADEQUATE DRAINAGE TO THE BILGE AT CENTERLINE.



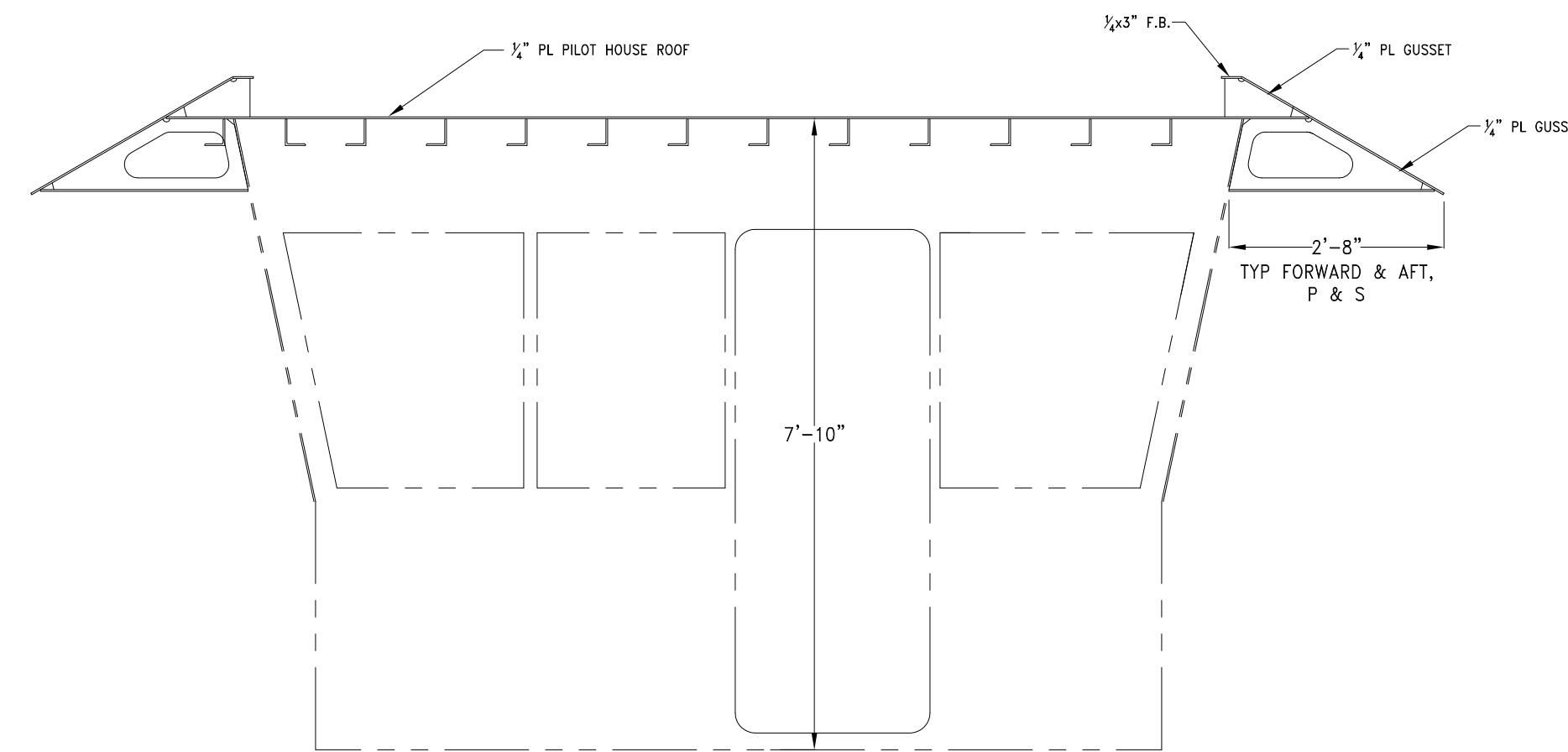
PILOTHOUSE ROOF COAMING STRUCTURAL DETAILS
1/4" PL STIFFENED AS SHOWN



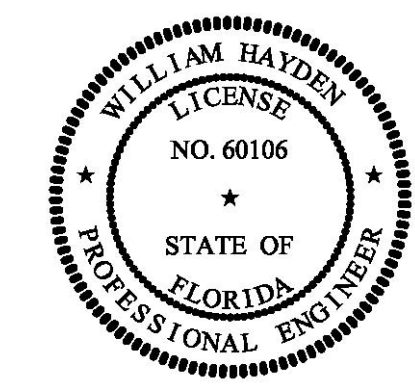
PILOTHOUSE ROOF STRUCTURAL DETAILS
1/4" PL W/ 4x3x1/4" L ON 12" CNTRS UNLESS OTHERWISE NOTED



DETACOUPLE CONNECTION @ MAIN DECK



35 30 25 20 15 10



PROFESSIONAL RIGHTS
This document discloses matter in which DeJong & Lebet, Incorporated has proprietary rights. Neither receipt nor possession thereof confers or transfers any right to reproduce, disclose or use in any manner this document in whole or in part or any information contained herein, except by written permission, as written agreement with DeJong & Lebet, Incorporated.
In the event of a purchase of this document the purchaser is authorized to construct no more than one device in accord herewith, unless otherwise agreed to in writing by DeJong & Lebet, Incorporated.
© 2018 by DeJong & Lebet, Inc.

DeJong & Lebet, Inc.
Naval Architects
Marine Engineers
Consultants
Surveyors
1734 Emerson Street
Jacksonville, Florida 32207
www.dejongandlebet.com
Phone: (904) 599-3673
Fax: (904) 599-1522
Info@dejongandlebet.com

Title: 70.5'x30'x11' NCD0T TOWBOAT

PILOTHOUSE STRUCTURAL DETAILS

Dwg. No. 17-1372-154 Alt. No. 0
Sht. 2 of 2

Drawn By: JACOB CONNALLY Date: JUNE 05, 2018
Checked By: _____ Date: _____
App'd By: _____ Scale: 1/2" = 1'-0"
ABS App'l: _____ USCG App'l: _____