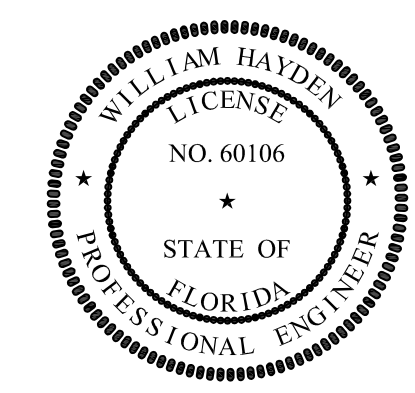


WELD SCHEDULE-TYPICAL

WELD DBL. CONT. FOR 2 1/2" EACH END	1/4" 3-8	TRANSVERSE FRAMES TO HULL & SIDESHELL	WELD DBL. CONT. FOR 3" EACH END	1/4" 3-10	LONGITUDINAL STIFFENERS TO MAIN DECK
WELD DBL. CONT. FOR 10% OF STIFF TYP.	3/16" 1/2 1/2-12	1. STIFFENERS TO W.T. BHDS 2. STIFFENERS TO SIDESHELL PLATING	WELD DBL. CONT. FOR 8" EACH END	1/4" 3-10	TRANSVERSE FRAMES TO MAIN DECK
WELD DBL. CONT. FOR 10% OF STIFF TYP.	1/4" 3-12	LONG. STIFFENERS TO HULL	WELD DBL. CONT. FOR 8" EACH END	1/4" 3-9	LONGITUDINAL GIRDERS TO MAIN DECK
	1/4" 3-12	W.T. BHDS TO SHELL PLATING	WELD DBL. CONT. FOR 8" EACH END	1/4" 3-12	STIFFENERS TO N.T. BHDS
	1/4" 3-10	N.T. BHDS TO SHELL PLATING		1/4" 3-10	RIDER PLATES TO RING FRAMES
DOUBLE CONTINUOUS		ALL STRUCTURE IWO ENGINE GIRDERS FRAME 18 TO 34		1/4"	1. BOTTOM FRAME BUTT TO KEEL PLATE 2. CORNER BRACKETING 3. STANCHIONS AND END PADS



PROFESSIONAL ENGINEER

This document discloses matter in which DeJong & Lebel, Incorporated has proprietary rights. Neither receipt nor possession thereof confers or transfers any right to reproduce, disclose or use in any manner this document in whole or in part or any information contained herein, except by written permission, or written agreement with DeJong & Lebel, Incorporated.

In the event of a purchase of this document the purchaser is authorized to construct no more than one device in accord herewith, unless otherwise signed to in writing by DeJong & Lebel, Incorporated.

© 2018 DeJong & Lebel, Inc.

DeJong & Lebel, Inc.
Naval Architects
Marine Engineers
Consultants
Surveyors

1734 Emerson Street
Jacksonville, Florida 32207
www.dejongandlebel.com

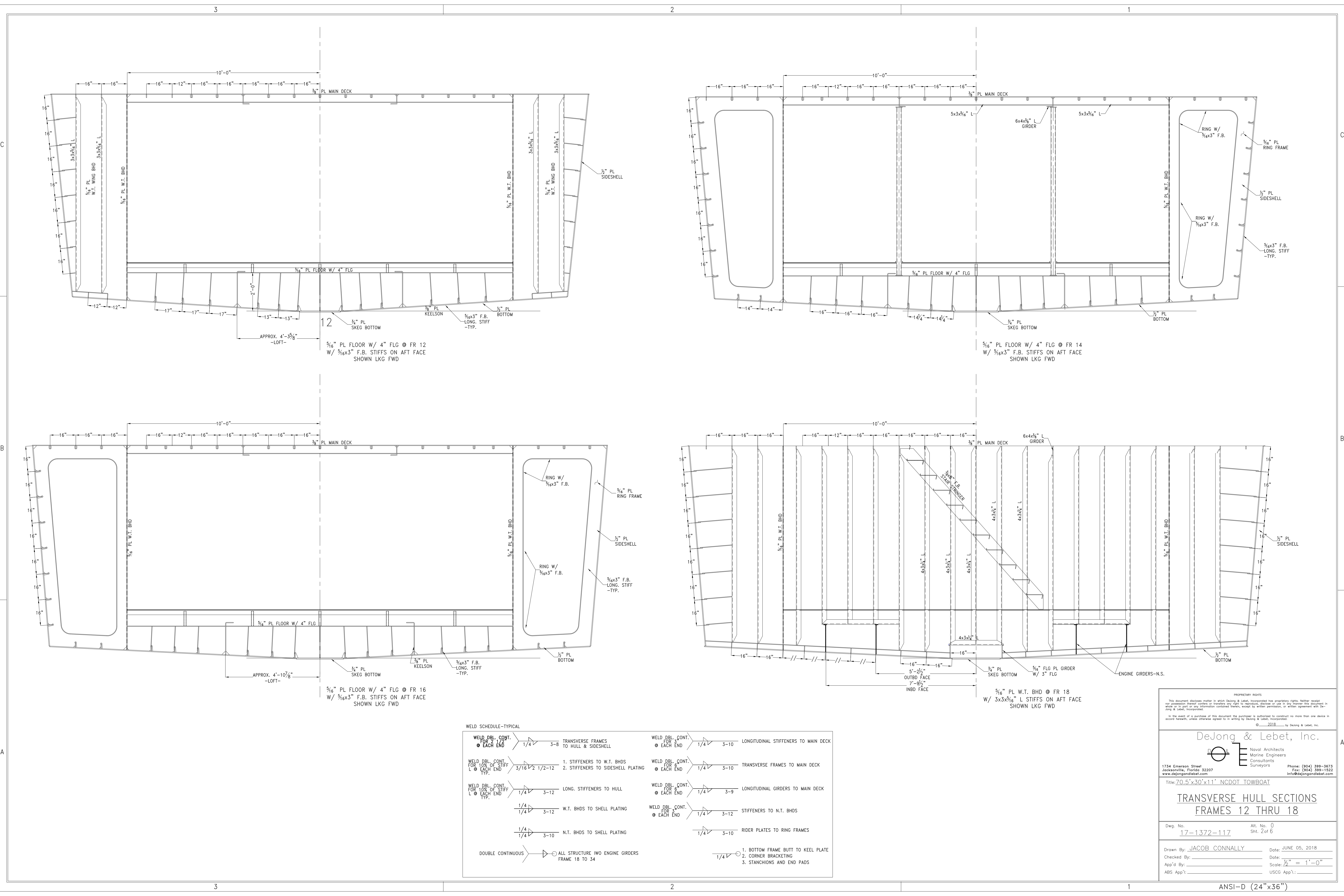
Phone: (904) 599-3673
Fax: (904) 599-1522
Info@dejongandlebel.com

Title: 70.5'x30'x11' NCDOT TOWBOAT

**TRANSVERSE HULL SECTIONS
FRAMES 2 THRU 10**

Dwg. No. 17-1372-117 Art. No. 0
Sht. 1 of 6

Drawn By: JACOB CONNALLY Date: JUNE 05, 2018
Checked By: _____ Date: _____
App'd By: _____ Scale: 1/2" = 1'-0"
ABS App'l: _____ USCG App'l: _____



WELD SCHEDULE-TYPICAL

<p>WELD DBL. CONT. FOR 2 1/2" @ EACH END</p> <p>1/4" 3-8</p> <p>TRANSVERSE FRAMES TO HULL & SIDESHELL</p>	<p>WELD DBL. CONT. FOR 3" @ EACH END</p> <p>1/4" 3-10</p> <p>LONGITUDINAL STIFFENERS TO MAIN DECK</p>
<p>WELD DBL. CONT. FOR 10% OF STIFF L @ EACH END TYP.</p> <p>3/16" 1/2-12</p> <p>1. STIFFENERS TO W.T. BHDS 2. STIFFENERS TO SIDESHELL PLATING</p>	<p>WELD DBL. CONT. FOR 8" @ EACH END</p> <p>1/4" 3-10</p> <p>TRANSVERSE FRAMES TO MAIN DECK</p>
<p>WELD DBL. CONT. FOR 10% OF STIFF L @ EACH END TYP.</p> <p>1/4" 3-12</p> <p>LONG. STIFFENERS TO HULL</p>	<p>WELD DBL. CONT. FOR 8" @ EACH END</p> <p>1/4" 3-9</p> <p>LONGITUDINAL GIRDERS TO MAIN DECK</p>
<p>1/4" 3-12</p> <p>W.T. BHDS TO SHELL PLATING</p>	<p>WELD DBL. CONT. FOR 8" @ EACH END</p> <p>1/4" 3-12</p> <p>STIFFENERS TO N.T. BHDS</p>
<p>1/4" 3-10</p> <p>N.T. BHDS TO SHELL PLATING</p>	<p>1/4" 3-10</p> <p>RIDER PLATES TO RING FRAMES</p>
<p>DOUBLE CONTINUOUS</p> <p>ALL STRUCTURE IWO ENGINE GIRDERS FRAME 18 TO 34</p>	<p>1/4" 3-10</p> <p>1. BOTTOM FRAME BUTT TO KEEL PLATE 2. CORNER BRACKETING 3. STANCHIONS AND END PADS</p>

PROPRIETARY RIGHTS

This document discloses matter in which DeJong & Lebel, Incorporated has proprietary rights. Neither receipt nor possession thereof confers or transfers any right to reproduce, disclose or use in any manner this document in whole or in part or any information contained herein, except by written permission, or written agreement with DeJong & Lebel, Incorporated.

In the event of a purchase of this document the purchaser is authorized to construct no more than one device in accord herewith, unless otherwise signed to in writing by DeJong & Lebel, Incorporated.

© 2018 DeJong & Lebel, Inc.

DeJong & Lebel, Inc.
 Naval Architects
 Marine Engineers
 Consultants
 Surveyors

1734 Emerson Street
 Jacksonville, Florida 32207
 www.dejongandlebel.com

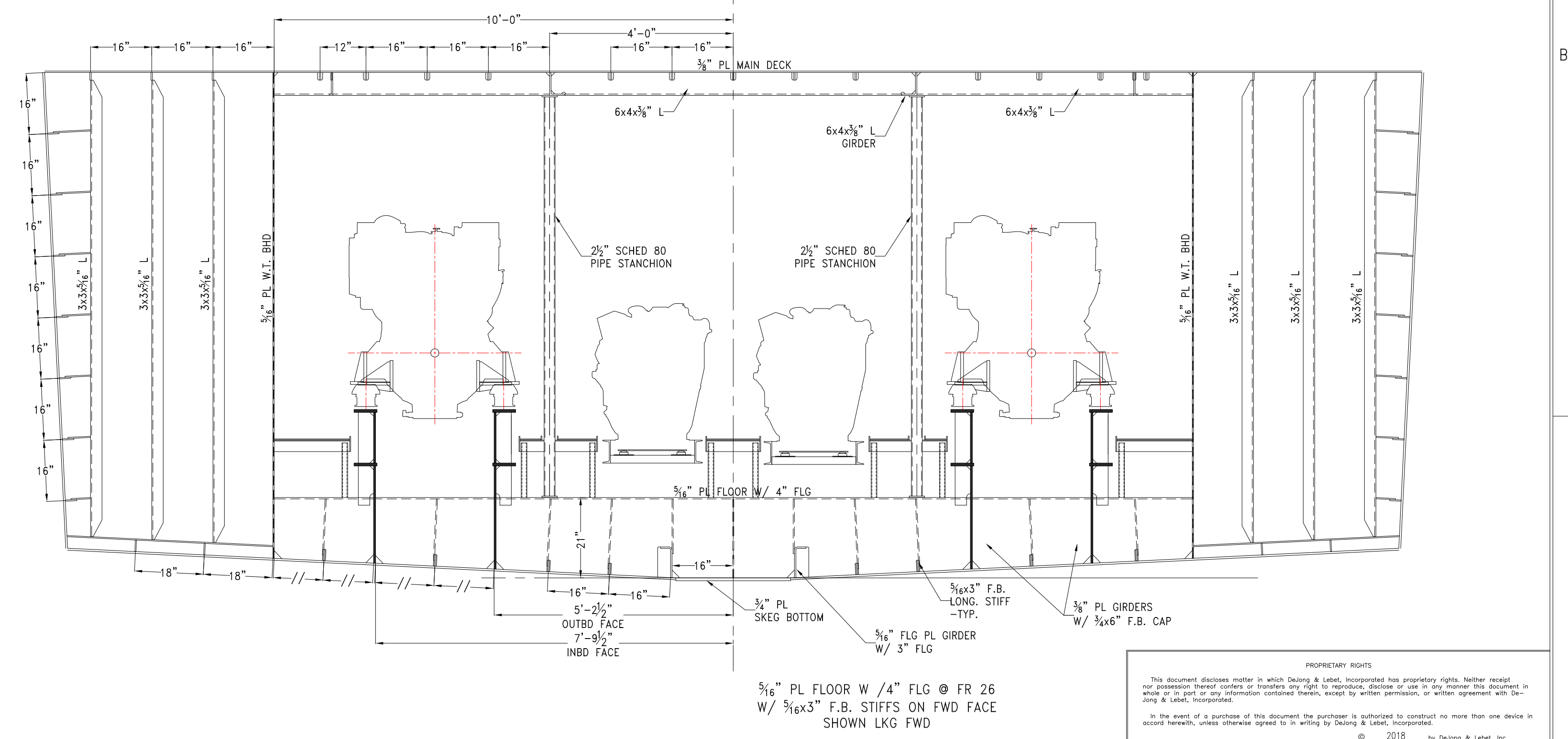
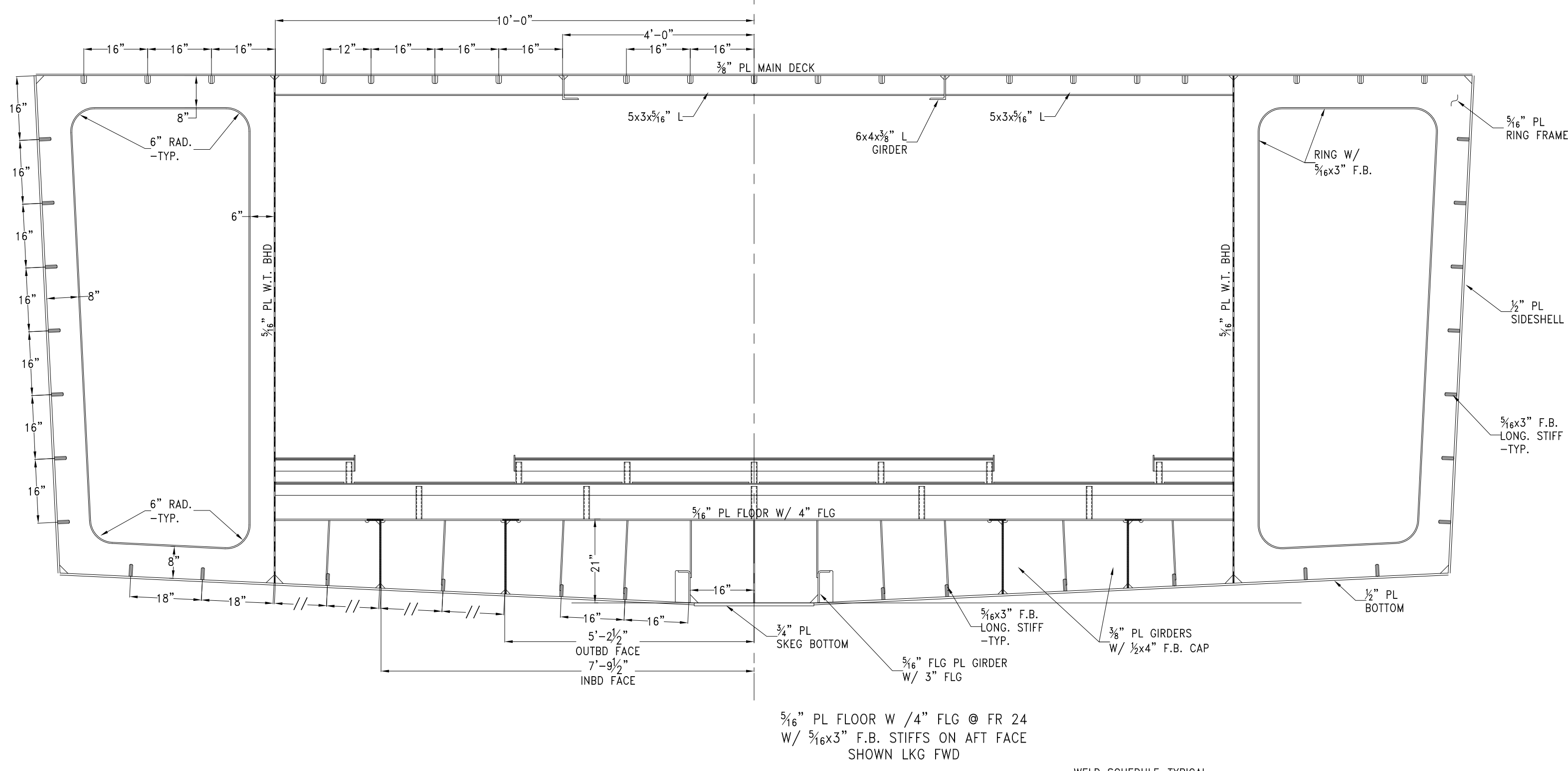
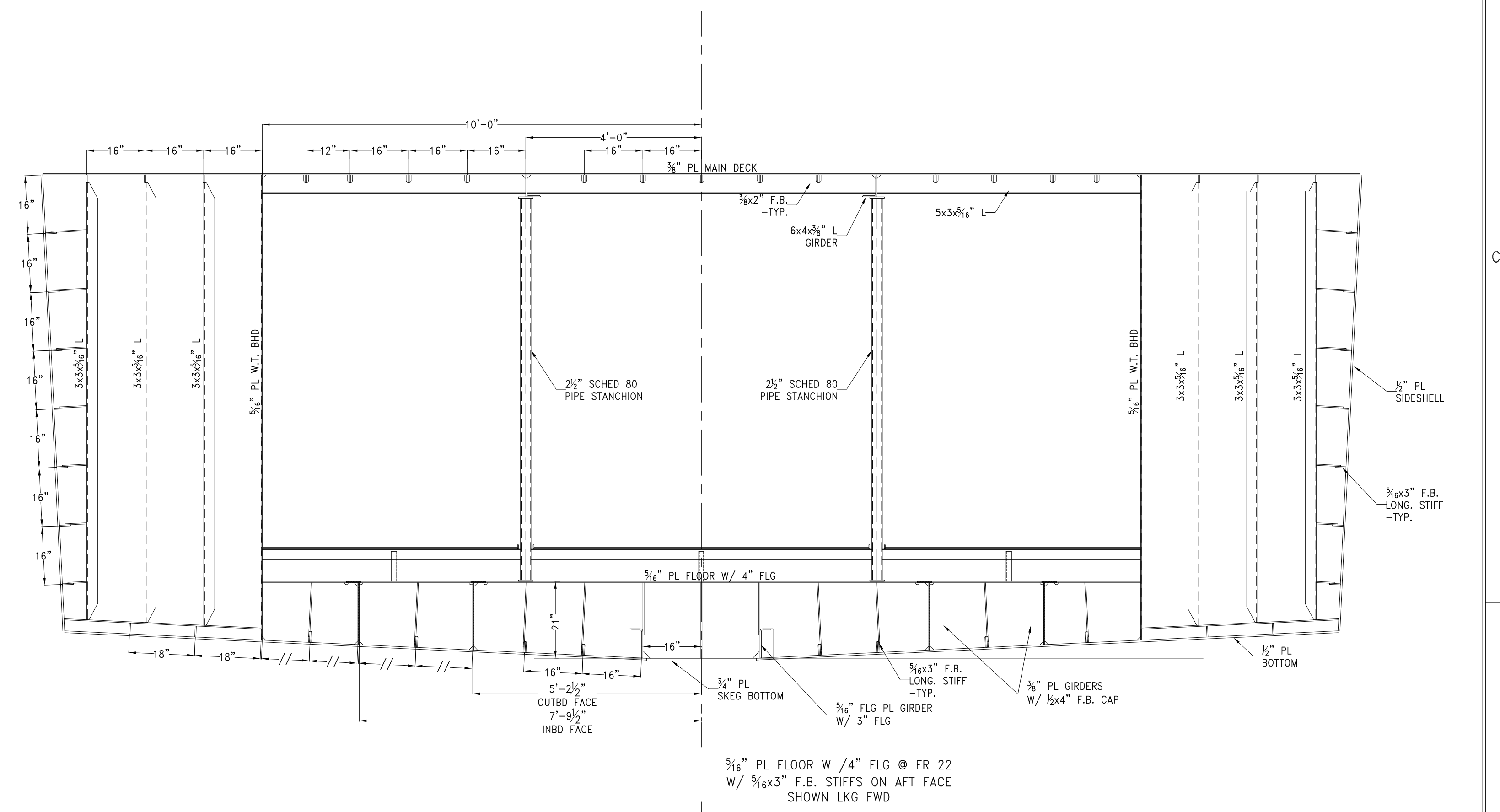
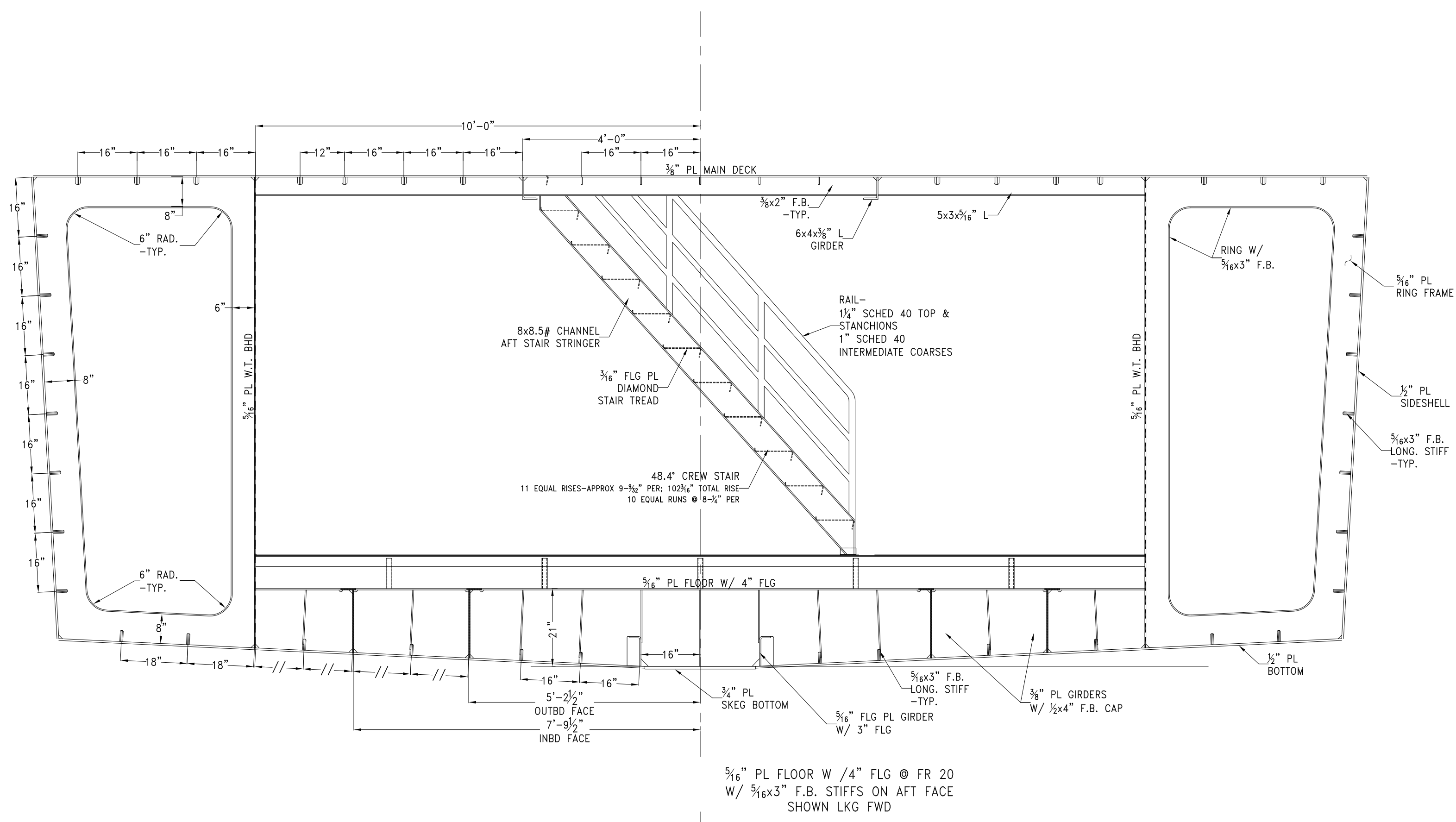
Phone: (904) 599-3673
 Fax: (904) 599-1522
 Info@dejongandlebel.com

Title: 70.5'x30'x11' NCDOT TOWBOAT

**TRANSVERSE HULL SECTIONS
 FRAMES 12 THRU 18**

Dwg. No. 17-1372-117 Art. No. 0
 Sht. 2 of 6

Drawn By: JACOB CONNALLY Date: JUNE 05, 2018
 Checked By: _____ Date: _____
 App'd By: _____ Scale: 1/2" = 1'-0"
 ABS App'l: _____ USCG App'l: _____



WELD SCHEDULE-TYPICAL

<p>WELD DBL. CONT. FOR 2 1/2\"/> </p>	<p>WELD DBL. CONT. FOR 3\"/> </p>
<p>WELD DBL. CONT. FOR 100% OF STIFF L @ EACH END TYP.</p>	<p>WELD DBL. CONT. FOR 8\"/> </p>
<p>WELD DBL. CONT. FOR 100% OF STIFF L @ EACH END TYP.</p>	<p>WELD DBL. CONT. FOR 8\"/> </p>
<p>1/4\"/> </p>	<p>WELD DBL. CONT. FOR 8\"/> </p>
<p>1/4\"/> </p>	<p>WELD DBL. CONT. FOR 8\"/> </p>
<p>DOUBLE CONTINUOUS</p>	<p>1/4\"/> </p>

PROSPECTIVE RIGHTS

This document discloses matter in which DeJong & Lebet, Incorporated has proprietary rights. Neither receipt nor possession thereof confers or transfers any right to reproduce, disclose or use in any manner this document in whole or in part or any information contained herein, except by written permission, as written agreement with DeJong & Lebet, Incorporated.

In the event of a purchase of this document the purchaser is authorized to construct no more than one device in accord herewith, unless otherwise signed to it, writing by DeJong & Lebet, Incorporated.

© 2018 by DeJong & Lebet, Inc.

DeJong & Lebet, Inc.
 Naval Architects
 Marine Engineers
 Consultants
 Surveyors

1734 Emerson Street
 Jacksonville, Florida 32207
 www.dejongandlebet.com

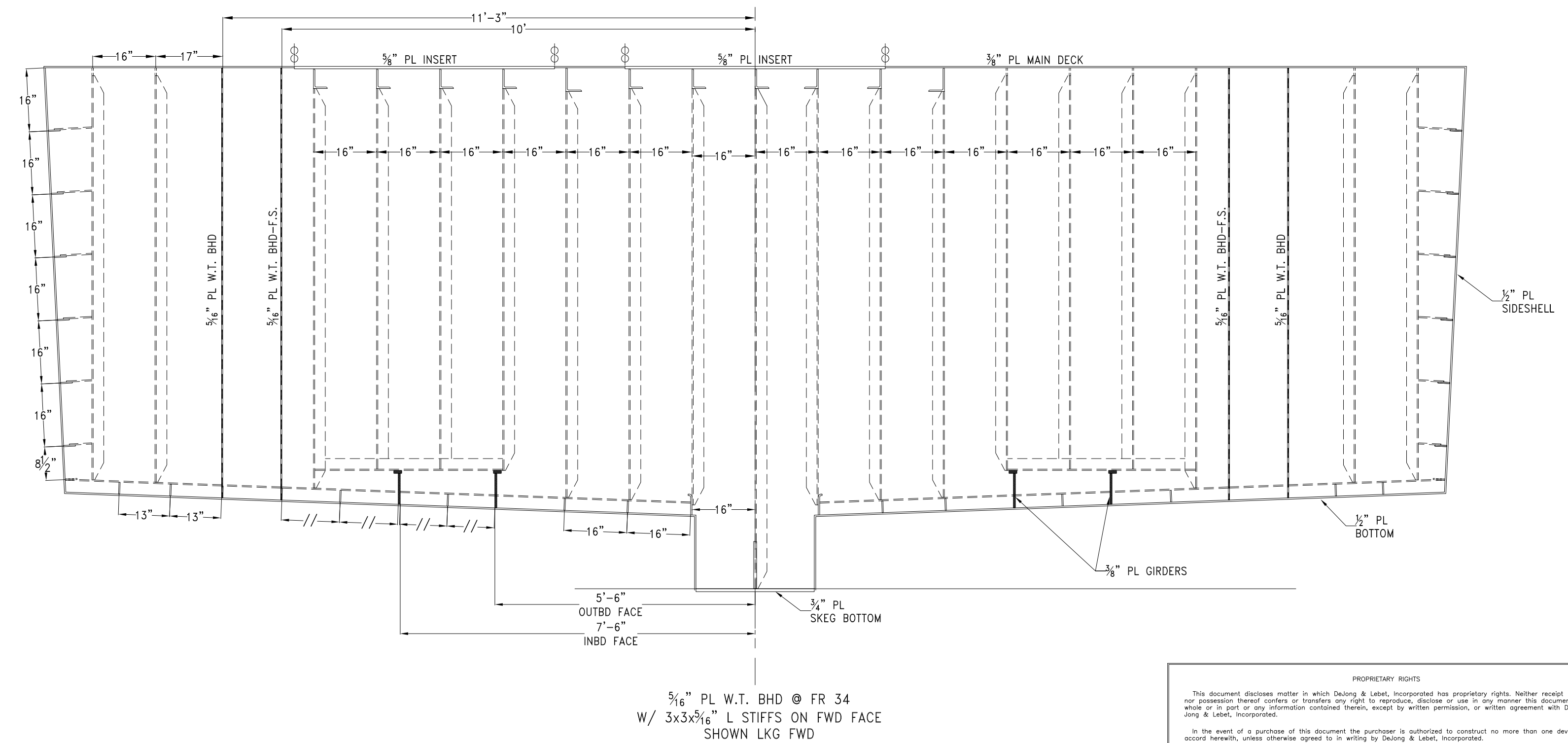
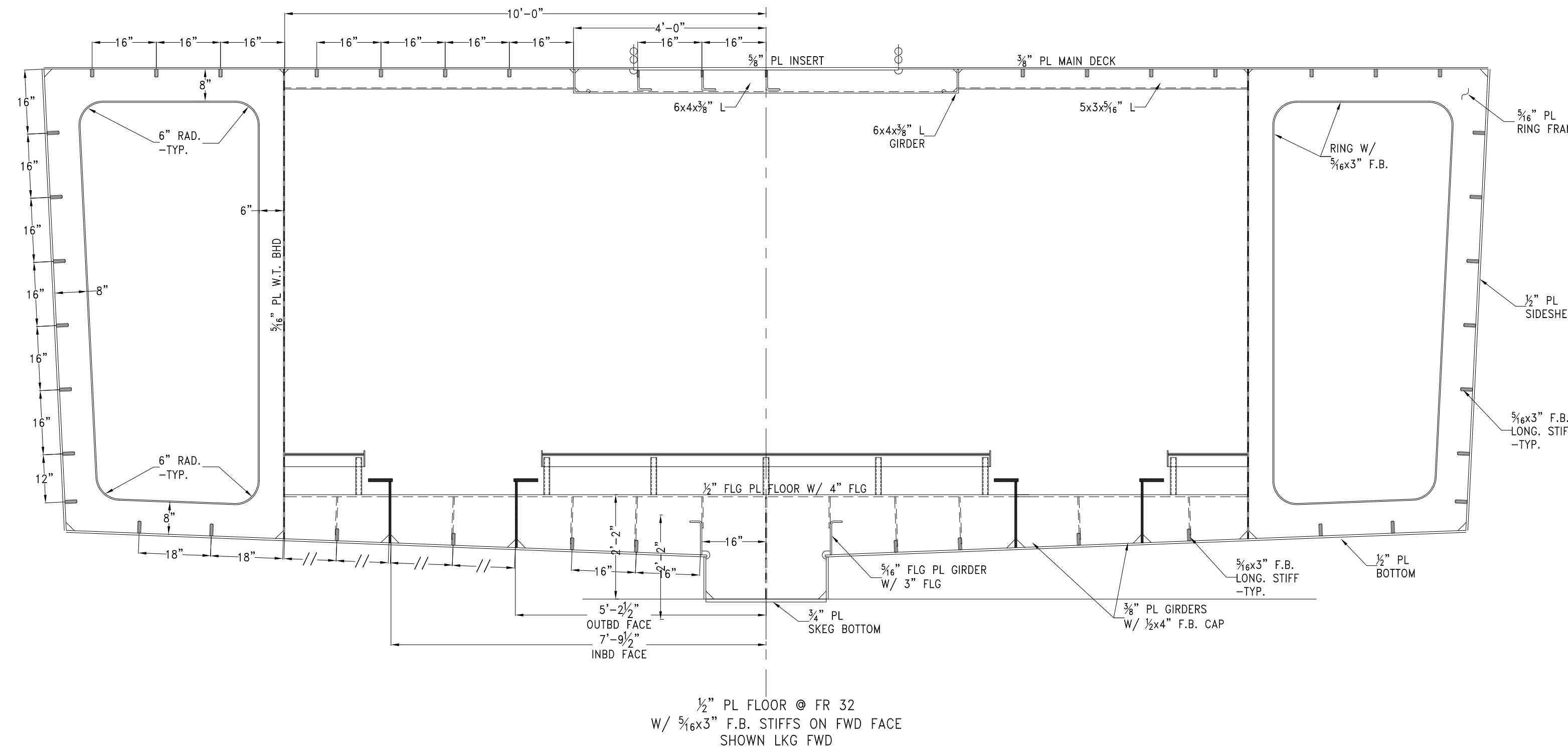
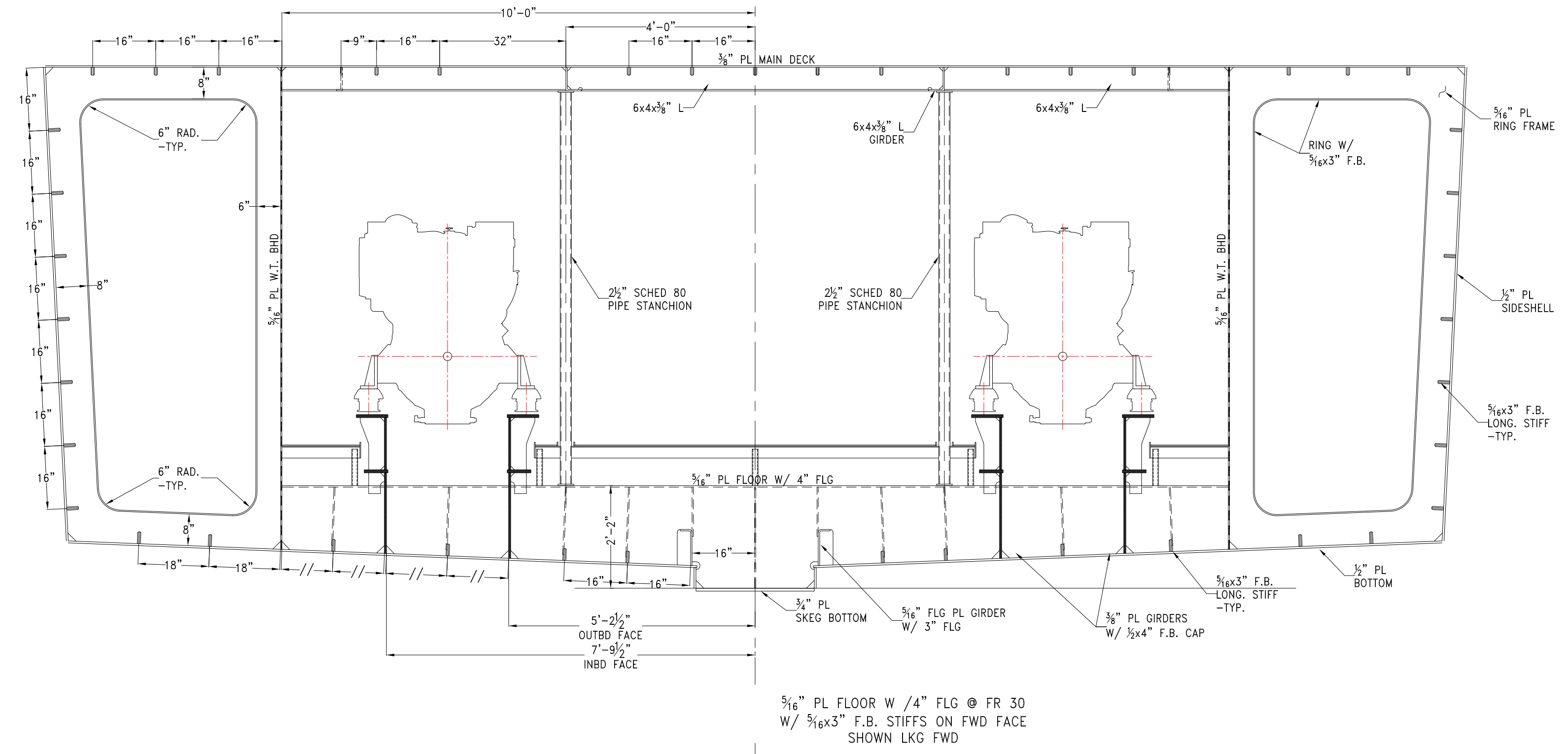
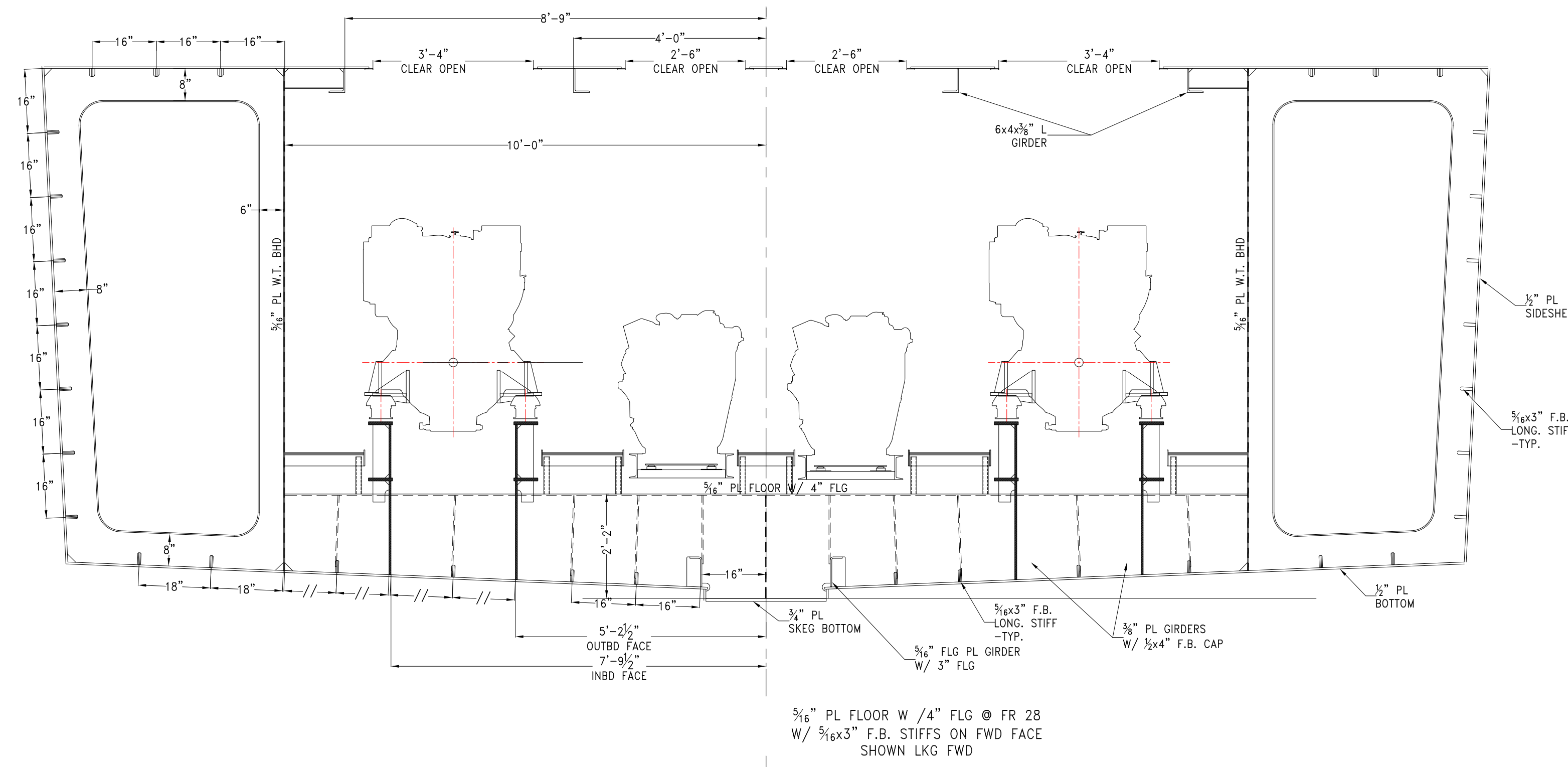
Phone: (904) 599-3673
 Fax: (904) 599-1522
 Info@dejongandlebet.com

Title: 70.5'x30'x11' NCDOT TOWBOAT

**TRANSVERSE HULL SECTIONS
 FRAMES 20 THRU 26**

Dwg. No. 17-1372-117 Art. No. 0
 Sht. 3 of 6

Drawn By: JACOB CONNALLY Date: JUNE 05, 2018
 Checked By: _____ Date: _____
 App'd By: _____ Scale: 1/2" = 1'-0"
 ABS App'l: _____ USCG App'l: _____



WELD SCHEDULE-TYPICAL

WELD DBL. CONT. FOR 2 1/2" @ EACH END	1/4" 3-8	TRANSVERSE FRAMES TO HULL & SIDESHELL	WELD DBL. CONT. FOR 3" @ EACH END	1/4" 3-10	LONGITUDINAL STIFFENERS TO MAIN DECK
WELD DBL. CONT. FOR 10% OF STIFF L @ EACH END	3/16" 1/2 1/2-12	1. STIFFENERS TO W.T. BHDS 2. STIFFENERS TO SIDESHELL PLATING	WELD DBL. CONT. FOR 8" @ EACH END	1/4" 3-10	TRANSVERSE FRAMES TO MAIN DECK
WELD DBL. CONT. FOR 10% OF STIFF L @ EACH END	1/4" 3-12	LONG. STIFFENERS TO HULL	WELD DBL. CONT. FOR 8" @ EACH END	1/4" 3-9	LONGITUDINAL GIRDERS TO MAIN DECK
	1/4" 3-12	W.T. BHDS TO SHELL PLATING	WELD DBL. CONT. FOR 8" @ EACH END	1/4" 3-12	STIFFENERS TO N.T. BHDS
	1/4" 3-10	N.T. BHDS TO SHELL PLATING		1/4" 3-10	RIDER PLATES TO RING FRAMES
DOUBLE CONTINUOUS		ALL STRUCTURE IWO ENGINE GIRDERS FRAME 18 TO 34		1/4"	1. BOTTOM FRAME BUTT TO KEEL PLATE 2. CORNER BRACKETING 3. STANCHIONS AND END PADS

PROPRIETARY RIGHTS

This document discloses matter in which DeJong & Lebel, Incorporated has proprietary rights. Neither receipt nor possession thereof confers or transfers any right to reproduce, disclose or use in any manner this document in whole or in part or any information contained herein, except by written permission, or written agreement with DeJong & Lebel, Incorporated.

In the event of a purchase of this document the purchaser is authorized to construct no more than one device in accord herewith, unless otherwise signed to it, writing by DeJong & Lebel, Incorporated.

© 2018 by DeJong & Lebel, Inc.

DeJong & Lebel, Inc.
Naval Architects
Marine Engineers
Consultants
Surveyors

1734 Emerson Street
Jacksonville, Florida 32207
www.dejongandlebel.com

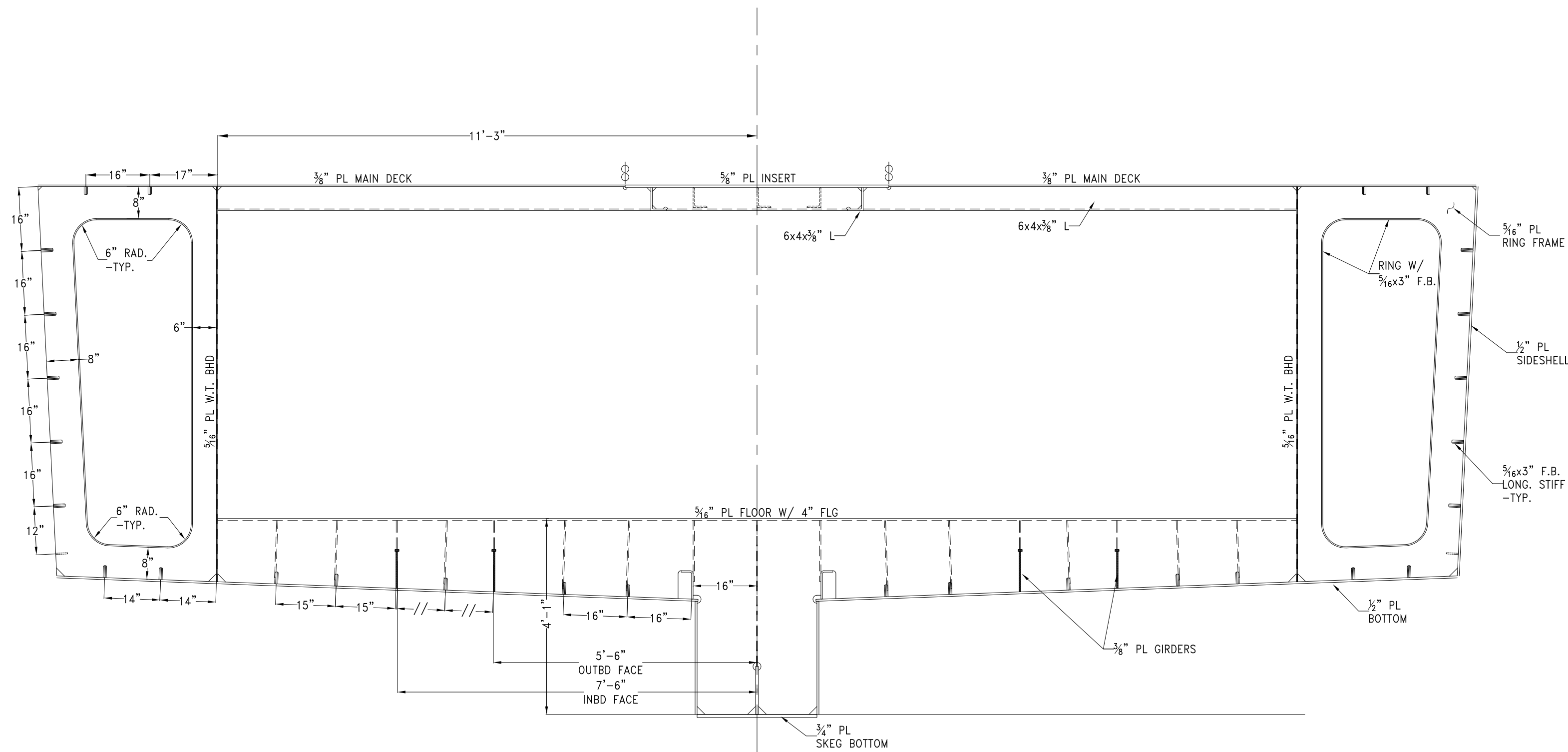
Phone: (904) 599-3673
Fax: (904) 599-1522
Info@dejongandlebel.com

Title: 70.5'x30'x11' NCDOT TOWBOAT

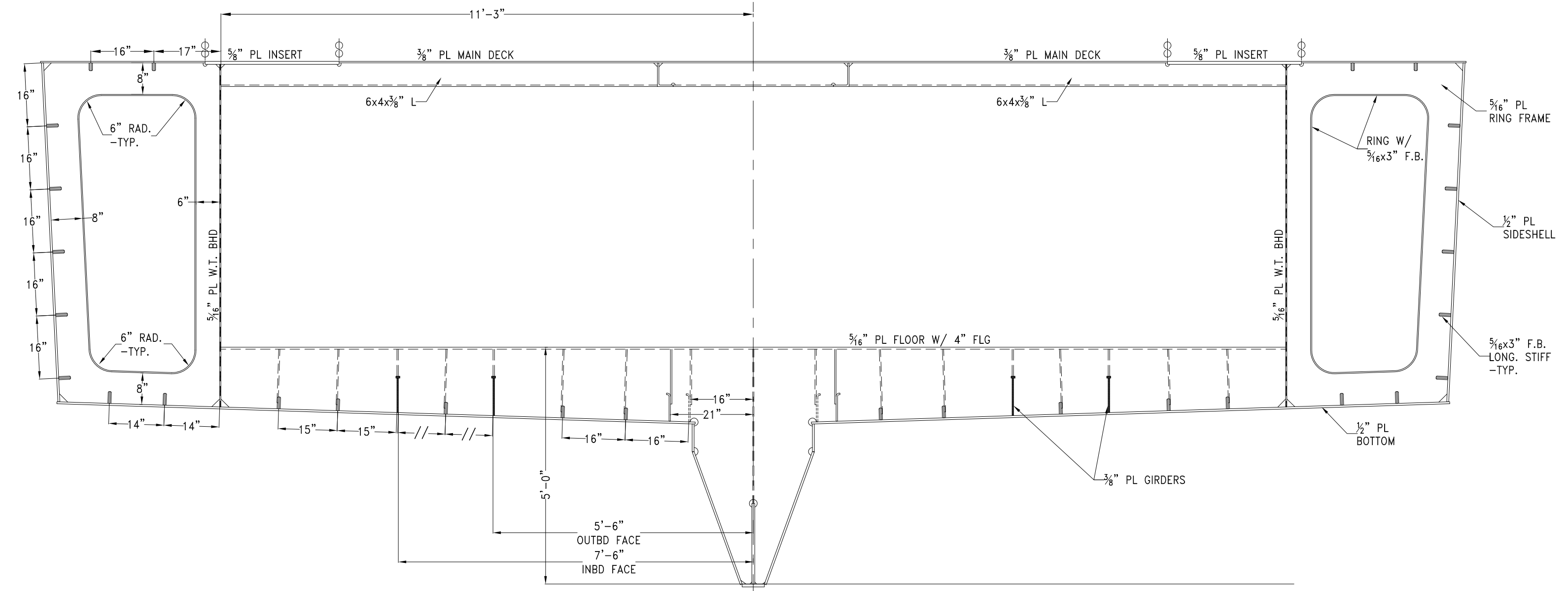
**TRANSVERSE HULL SECTIONS
FRAMES 28 THRU 34**

Dwg. No. 17-1372-117 Art. No. 0
Sht. 4 of 6

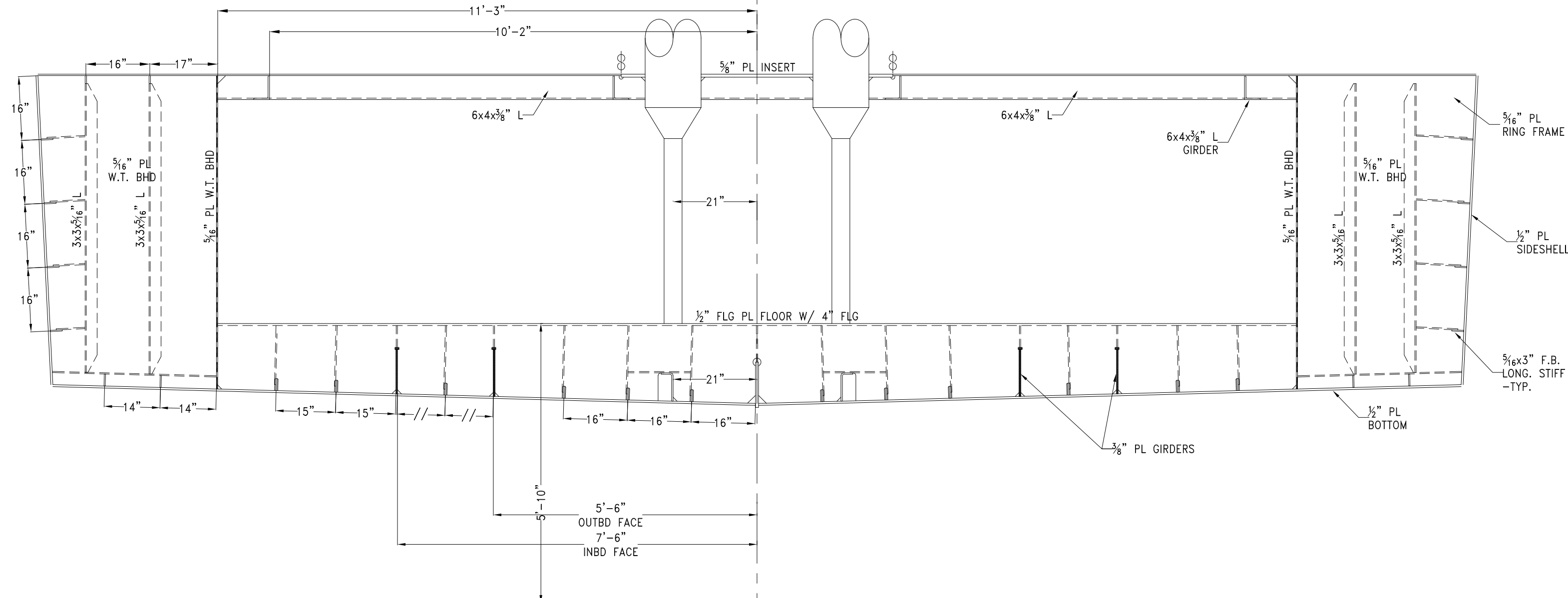
Drawn By: JACOB CONNALLY Date: JUNE 05, 2018
Checked By: _____ Date: _____
App'd By: _____ Scale: 1/2" = 1'-0"
ABS App'l: _____ USCG App'l: _____



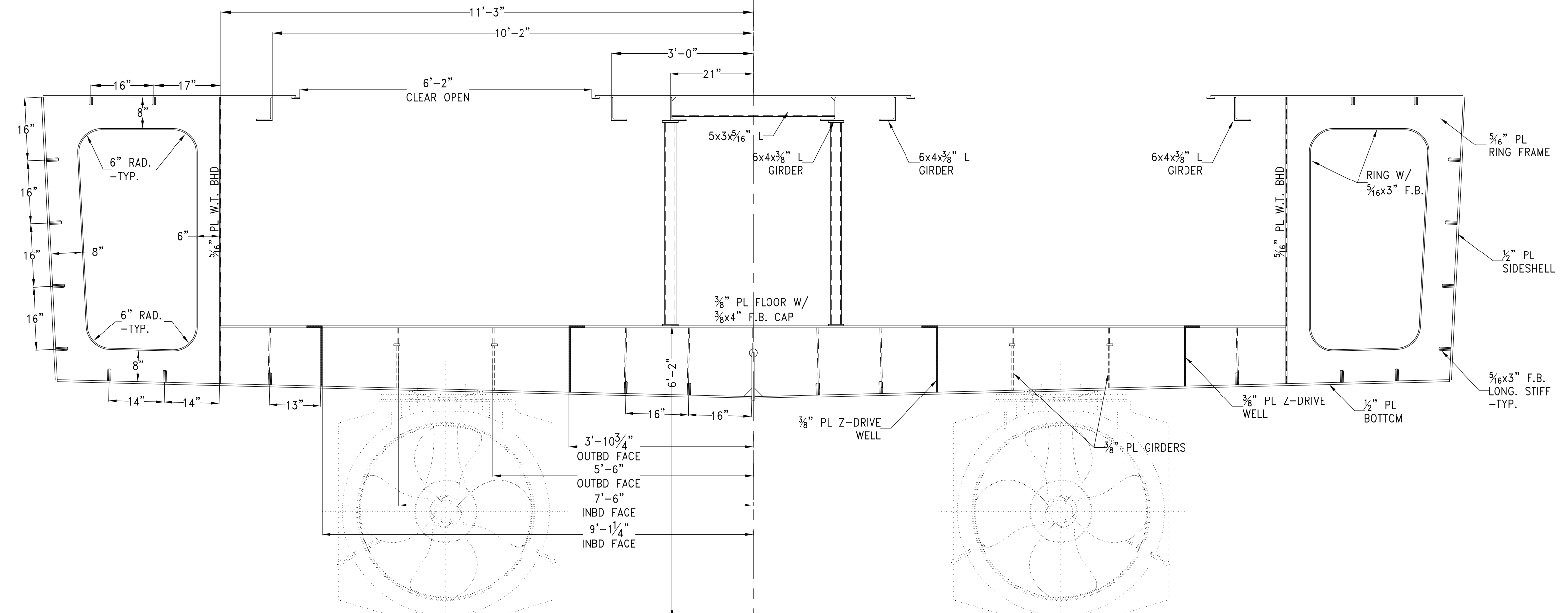
3/16" PL FLOOR W/ 4" FLG @ FR 36
W/ 3/16x3" F.B. STIFFS ON FWD FACE
SHOWN LKG FWD



3/16" PL FLOOR W/ 4" FLG @ FR 38
W/ 3/16x3" F.B. STIFFS ON FWD FACE
SHOWN LKG FWD



1/2" PL FLOOR @ FR 40
W/ 3/16x3" F.B. STIFFS ON FWD FACE
SHOWN LKG FWD



3/8" PL FLOOR W/ 3/16x4" F.B. CAP @ FR 42
W/ 3/16x3" F.B. STIFFS ON FWD FACE
SHOWN LKG FWD

WELD SCHEDULE-TYPICAL

WELD DBL. CONT. FOR 2 1/2" @ EACH END	1/4" 3-8	TRANSVERSE FRAMES TO HULL & SIDESHELL	WELD DBL. CONT. FOR 8" @ EACH END	1/4" 3-10	LONGITUDINAL STIFFENERS TO MAIN DECK
WELD DBL. CONT. FOR 10% OF STIFF @ EACH END	3/16" 1/2 1/2-12	1. STIFFENERS TO W.T. BHDS 2. STIFFENERS TO SIDESHELL PLATING	WELD DBL. CONT. FOR 8" @ EACH END	1/4" 3-10	TRANSVERSE FRAMES TO MAIN DECK
WELD DBL. CONT. FOR 10% OF STIFF @ EACH END	1/4" 3-12	LONG. STIFFENERS TO HULL	WELD DBL. CONT. FOR 8" @ EACH END	1/4" 3-9	LONGITUDINAL GIRDERS TO MAIN DECK
	1/4" 3-12	W.T. BHDS TO SHELL PLATING	WELD DBL. CONT. FOR 8" @ EACH END	1/4" 3-12	STIFFENERS TO N.T. BHDS
	1/4" 3-10	N.T. BHDS TO SHELL PLATING		1/4" 3-10	RIDER PLATES TO RING FRAMES
DOUBLE CONTINUOUS		ALL STRUCTURE IWO ENGINE GIRDERS FRAME 18 TO 34		1/4" 3-10	1. BOTTOM FRAME BUTT TO KEEL PLATE 2. CORNER BRACKETING 3. STANCHIONS AND END PADS

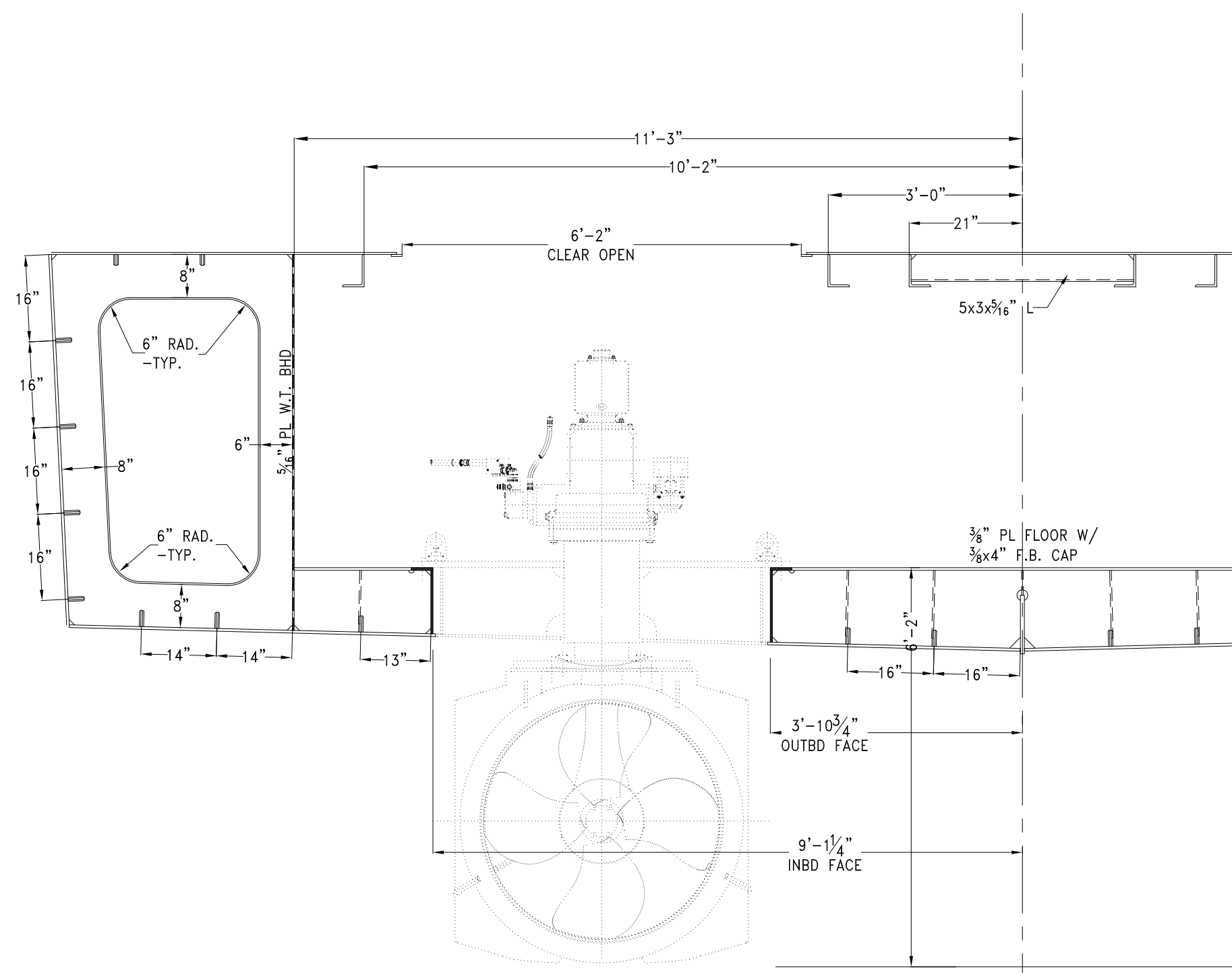
PROSPECTIVE CLIENTS
This document discloses matter in which DeJong & Lebel, Incorporated has proprietary rights. Neither receipt nor possession thereof confers or transfers any right to reproduce, disclose or use in any manner this document in whole or in part or any information contained herein, except by written permission, or written agreement with DeJong & Lebel, Incorporated.
In the event of a purchase of this document the purchaser is authorized to construct no more than one device in accord herewith, unless otherwise signed to in writing by DeJong & Lebel, Incorporated.
© 2018 by DeJong & Lebel, Inc.

DeJong & Lebel, Inc.
Naval Architects
Marine Engineers
Consultants
Surveyors
1734 Emerson Street
Jacksonville, Florida 32207
www.dejongandlebel.com
Phone: (904) 999-3673
Fax: (904) 598-1522
Info@dejongandlebel.com

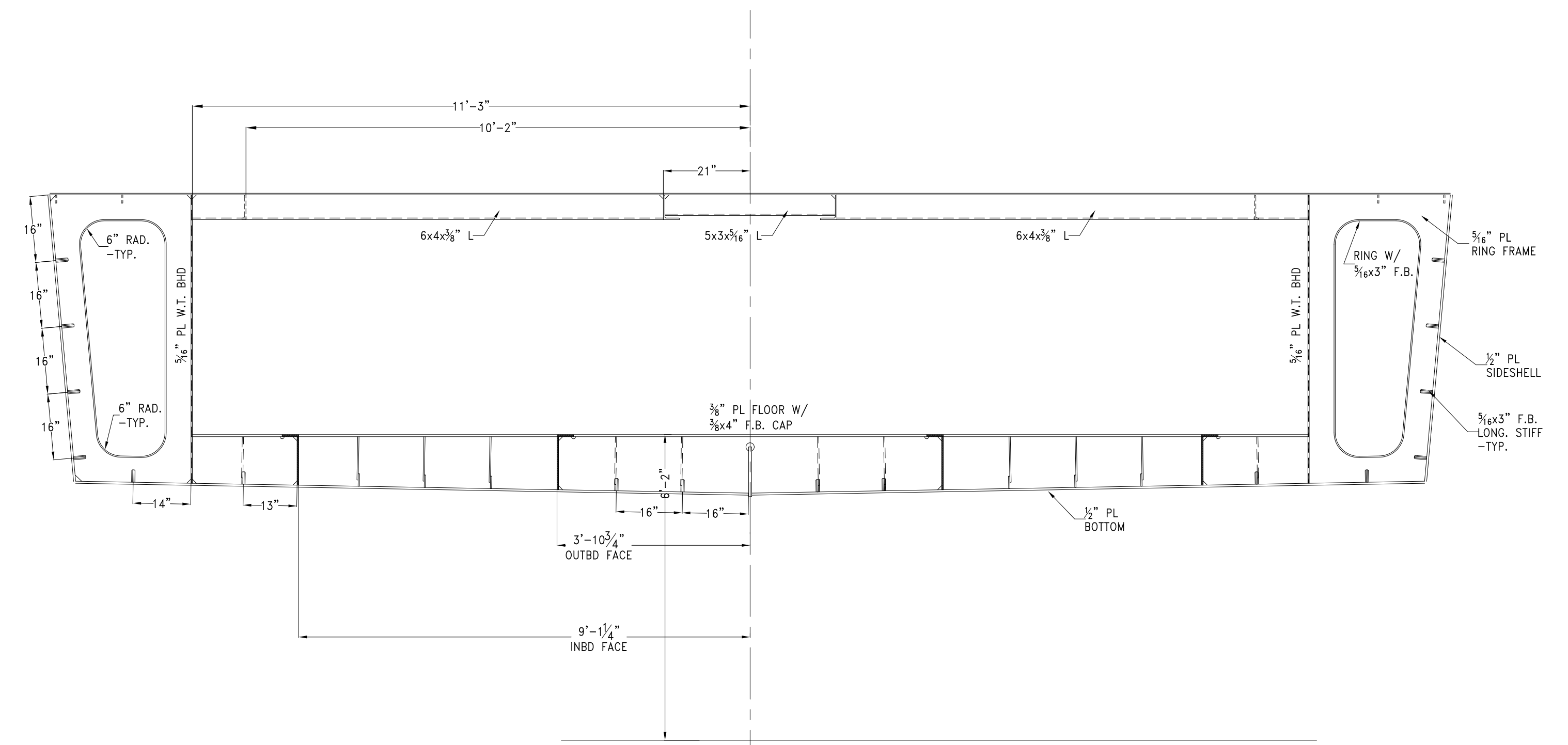
Title: 70.5'x30'x11' NCDOT TOWBOAT
**TRANSVERSE HULL SECTIONS
FRAMES 36 THRU 42**

Dwg. No. 17-1372-117 Art. No. 0 Sht. 5 of 6
Date: JUNE 05, 2018
Scale: 1/2" = 1'-0"
USCG App'l: _____

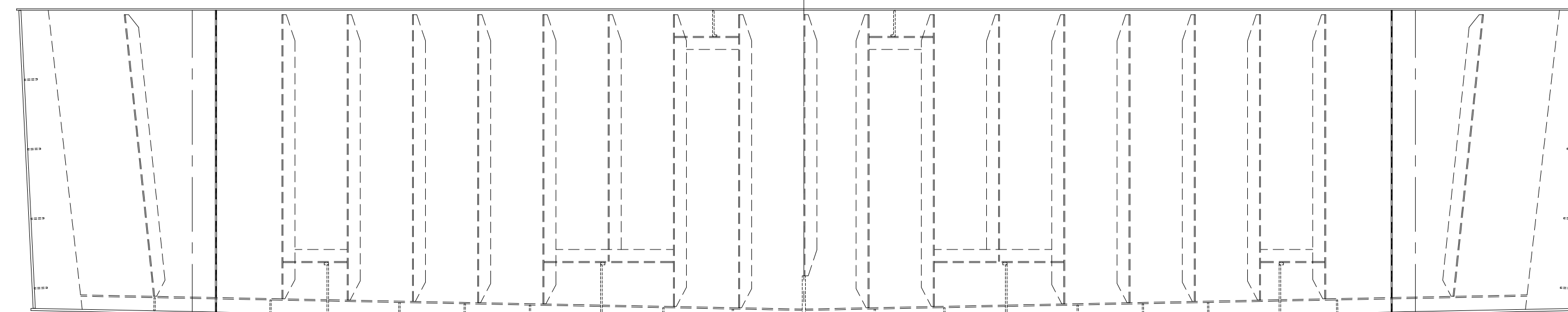
Drawn By: JACOB CONNALLY
Checked By: _____
App'd By: _____
ABS App'l: _____



44
 3/8" PL FLOOR W/ 3/8x4" F.B. CAP @ FR 44
 W/ 3/16x3" F.B. STIFFS ON FWD FACE
 SHOWN LKG FWD



46
 3/8" PL FLOOR W/ 3/8x4" F.B. CAP @ FR 46
 W/ 3/16x3" F.B. STIFFS ON FWD FACE
 SHOWN LKG FWD



TRANSOM
 1/2" PL TRANSOM W/ 3x3x3/16" L STIFFENERS
 ON FWD FACE
 SHOWN LKG FWD

WELD SCHEDULE-TYPICAL

WELD DBL. CONT. FOR 2 1/8" @ EACH END	1/4" 3-8	TRANSVERSE FRAMES TO HULL & SIDESHELL	WELD DBL. CONT. FOR 6" @ EACH END	1/4" 3-10	LONGITUDINAL STIFFENERS TO MAIN DECK
WELD DBL. CONT. FOR 10% OF STIFF L @ EACH END	3/16" 1/2 1/2-12	1. STIFFENERS TO W.T. BHDS 2. STIFFENERS TO SIDESHELL PLATING	WELD DBL. CONT. FOR 6" @ EACH END	1/4" 3-10	TRANSVERSE FRAMES TO MAIN DECK
WELD DBL. CONT. FOR 10% OF STIFF L @ EACH END	1/4" 3-12	LONG. STIFFENERS TO HULL	WELD DBL. CONT. FOR 6" @ EACH END	1/4" 3-9	LONGITUDINAL GIRDERS TO MAIN DECK
	1/4" 3-12	W.T. BHDS TO SHELL PLATING	WELD DBL. CONT. FOR 6" @ EACH END	1/4" 3-12	STIFFENERS TO N.T. BHDS
	1/4" 3-10	N.T. BHDS TO SHELL PLATING		1/4" 3-10	RIDER PLATES TO RING FRAMES
DOUBLE CONTINUOUS		ALL STRUCTURE IWO ENGINE GIRDERS FRAME 18 TO 34			1. BOTTOM FRAME BUTT TO KEEL PLATE 2. CORNER BRACKETING 3. STANCHIONS AND END PADS

PROPRIETARY RIGHTS
 This document discloses matter in which DeJong & Lebet, Incorporated has proprietary rights. Neither receipt nor possession thereof confers or transfers any right to reproduce, disclose or use in any manner this document in whole or in part or any information contained herein, except by written permission, or written agreement with DeJong & Lebet, Incorporated.
 In the event of a purchase of this document the purchaser is authorized to construct no more than one device in accord herewith, unless otherwise signed to it, writing by DeJong & Lebet, Incorporated.
 © 2018 by DeJong & Lebet, Inc.

DeJong & Lebet, Inc.
 Naval Architects
 Marine Engineers
 Consultants
 Surveyors

1734 Emerson Street
 Jacksonville, Florida 32207
 www.dejongandlebet.com

Phone: (904) 599-3673
 Fax: (904) 599-1522
 info@dejongandlebet.com

Title: 70.5'x30'x11' NCDOT TOWBOAT

**TRANSVERSE HULL SECTIONS
 FRAMES 44 THRU TRANSOM**

Dwg. No. 17-1372-117 Art. No. 0
 Sht. 6 of 6

Drawn By: JACOB CONNALLY Date: JUNE 05, 2018
 Checked By: _____ Date: _____
 App'd By: _____ Scale: 1/2" = 1'-0"
 ABS App'l: _____ USCG App'l: _____