

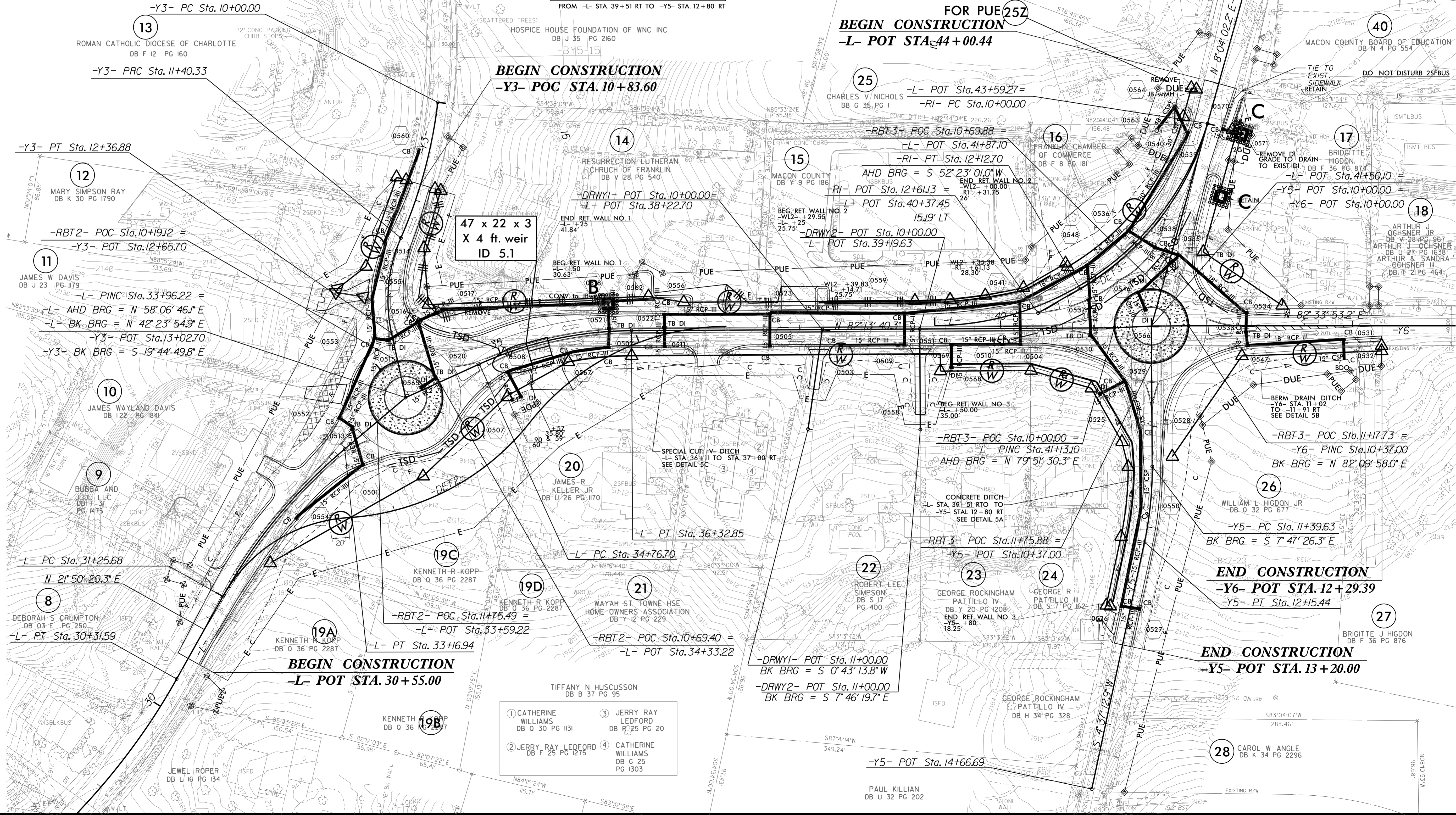
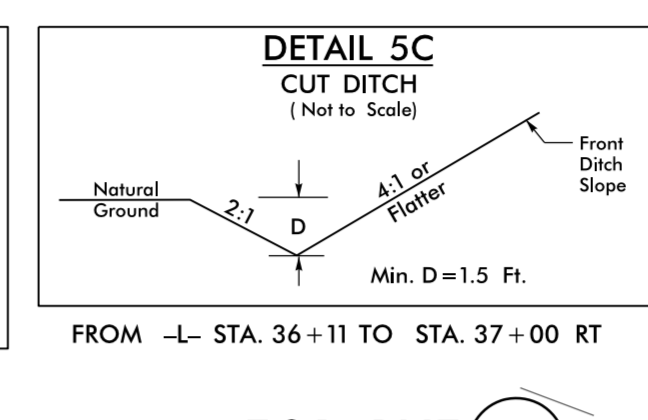
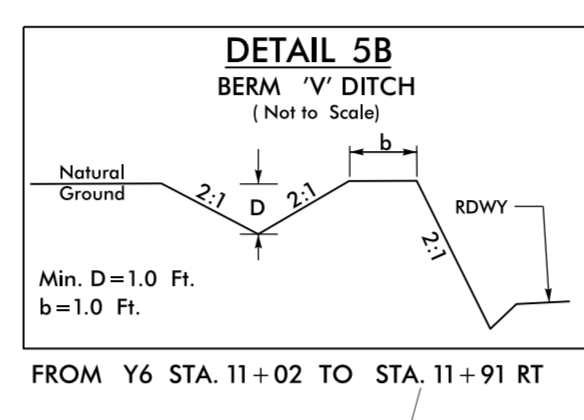
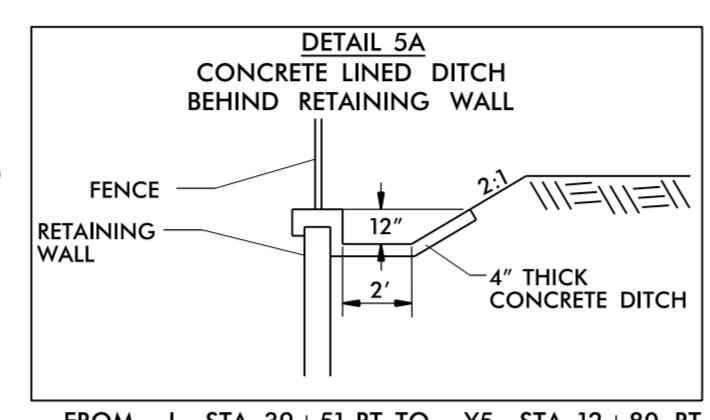
SEE SHEET 2B-2 AND 2B-3 FOR SUPERELEVATION

NOTE: PLACE TEMPORARY ROCK SEDIMENT DAMS TYPE - B AND TEMPORARY ROCK SILT CHECKS TYPE - A AT DRAINAGE OUTLETS.

CLEARING AND GRUBBING EROSION CONTROL FOR CONSTRUCTION SHEET 5

PROJECT REFERENCE NO.	SHEET NO.
U-5604	EC-5/CONST.5
RW SHEET NO.	
ROADWAY DESIGN ENGINEER	HYDRAULICS ENGINEER

<p>-Y3- PI Sta 10+70.67 Δ = 16' 45" 03.1" (RT) D = 11' 56" 11.8" L = 140.33' T = 70.67' R = 480.00' SE = EXIST. RO = SEE PLANS</p>	<p>-Y3- PI Sta 11+90.25 Δ = 35' 55" 11.1" (LT) D = 37' 12" 18.2" L = 96.55' T = 49.92' R = 154.00' SE = SEE PLANS RO = SEE PLANS</p>	<p>-L- PI Sta 28+36.16 Δ = 35' 21" 19.9" (LT) D = 8' 44" 50.8" L = 404.18' T = 208.76' R = 655.00' SE = EXIST. RO = EXIST.</p>	<p>-L- PI Sta 32+22.35 Δ = 20' 33" 34.6" (RT) D = 10' 44" 58.8" L = 191.26' T = 96.67' R = 533.00' SE = SEE PLANS RO = SEE PLANS</p>	<p>-L- PI Sta 35+35.55 Δ = 24' 06" 54.3" (RT) D = 15' 26" 37.0" L = 157.25' T = 79.25' R = 371.00' SE = SEE PLANS RO = SEE PLANS</p>	<p>-Y5- PI Sta 11+77.69 Δ = 12' 24" 39.2" (RT) D = 16' 22" 12.8" L = 75.81' T = 38.06' R = 350.00' SE = SEE PLANS RO = SEE PLANS</p>
<p>-RBT2- PI Sta 10+00.00 Δ = 359' 59" 21.6" (RT) D = 154' 51" 12.4" L = 232.47' T = 0.00' R = 37.00' SE = SEE PLANS RO = SEE PLANS</p>	<p>-RBT3- PI Sta 10+00.01 Δ = 359' 57" 12.8" (RT) D = 154' 51" 12.4" L = 232.45' T = 0.00' R = 37.00' SE = SEE PLANS RO = SEE PLANS</p>	<p>-RI- PI Sta 11+11.99 Δ = 44' 18" 58.7" (RT) D = 20' 50" 05.4" L = 212.70' T = 111.99' R = 275.00' SE = SEE PLANS RO = SEE PLANS</p>	<p>RELEASE FOR CONSTRUCTION DATE FEBRUARY 5, 2018</p>		



47 x 22 x 3  
X 4 ft. weir  
ID 5.1

BEGIN CONSTRUCTION  
-Y3- POC STA. 10+83.60

FOR PUE 25Z  
BEGIN CONSTRUCTION  
-L- POT STA. 44+00.44

END CONSTRUCTION  
-Y6- POT STA. 12+29.39  
-Y5- PT STA. 12+15.44

END CONSTRUCTION  
-Y5- POT STA. 13+20.00

- 1 CATHERINE WILLIAMS DB O 30 PG 131
- 2 JERRY RAY LEDFORD DB F 25 PG 1275
- 3 JERRY RAY LEDFORD DB R 25 PG 20
- 4 CATHERINE WILLIAMS DB G 25 PG 1303

REVISIONS

8/17/19

7/13/2018 10:57:48 AM  
H:\Projects\5604\_Hyd.ec.psh5.dgn