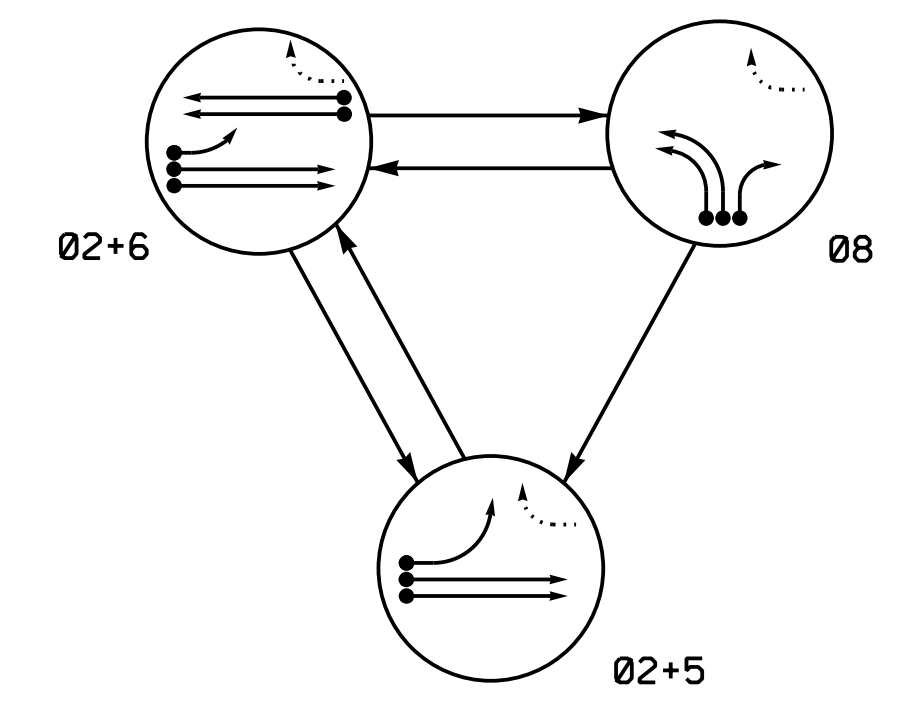


**PHASING DIAGRAM**

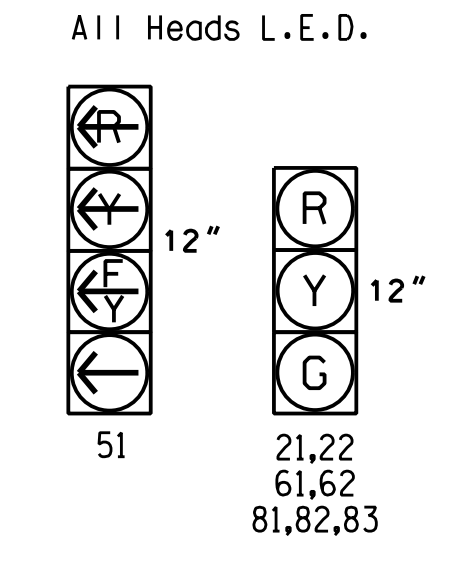


**PHASING DIAGRAM DETECTION LEGEND**

- ➔ DETECTED MOVEMENT
- ➔ UNDETECTED MOVEMENT (OVERLAP)
- ➔ UNSIGNALIZED MOVEMENT
- ➔ PEDESTRIAN MOVEMENT

SIGNAL FACE	PHASE			
	02+5	02+6	08	FLASH
21,22	G	G	R	Y
51	-	F	R	Y
61,62	R	G	R	Y
81,82,83	R	R	G	R

**SIGNAL FACE I.D.**



INDUCTIVE LOOPS				DETECTOR PROGRAMMING						SYSTEM LOOP	NEW CARD
LOOP	SIZE (FT)	DISTANCE FROM STOPBAR (FT)	TURNS	PHASE	CALLING	EXTENSION	FULL TIME DELAY	STRETCH TIME	DELAY TIME		
2A	6X6	70	*	2	Y	Y	-	-	-	-	*
2B	6X6	70	*	2	Y	Y	-	-	-	-	*
5A	6X40	0	*	5	Y	Y	-	-	15	-	*
6A	6X6	70	*	6	Y	Y	-	-	-	-	*
6B	6X6	70	*	6	Y	Y	-	-	-	-	*
8A	6X40	0	*	8	Y	Y	-	-	-	-	*
8B	6X40	0	*	8	Y	Y	-	-	-	-	*
8C	6X40	0	*	8	Y	Y	-	-	15	-	*

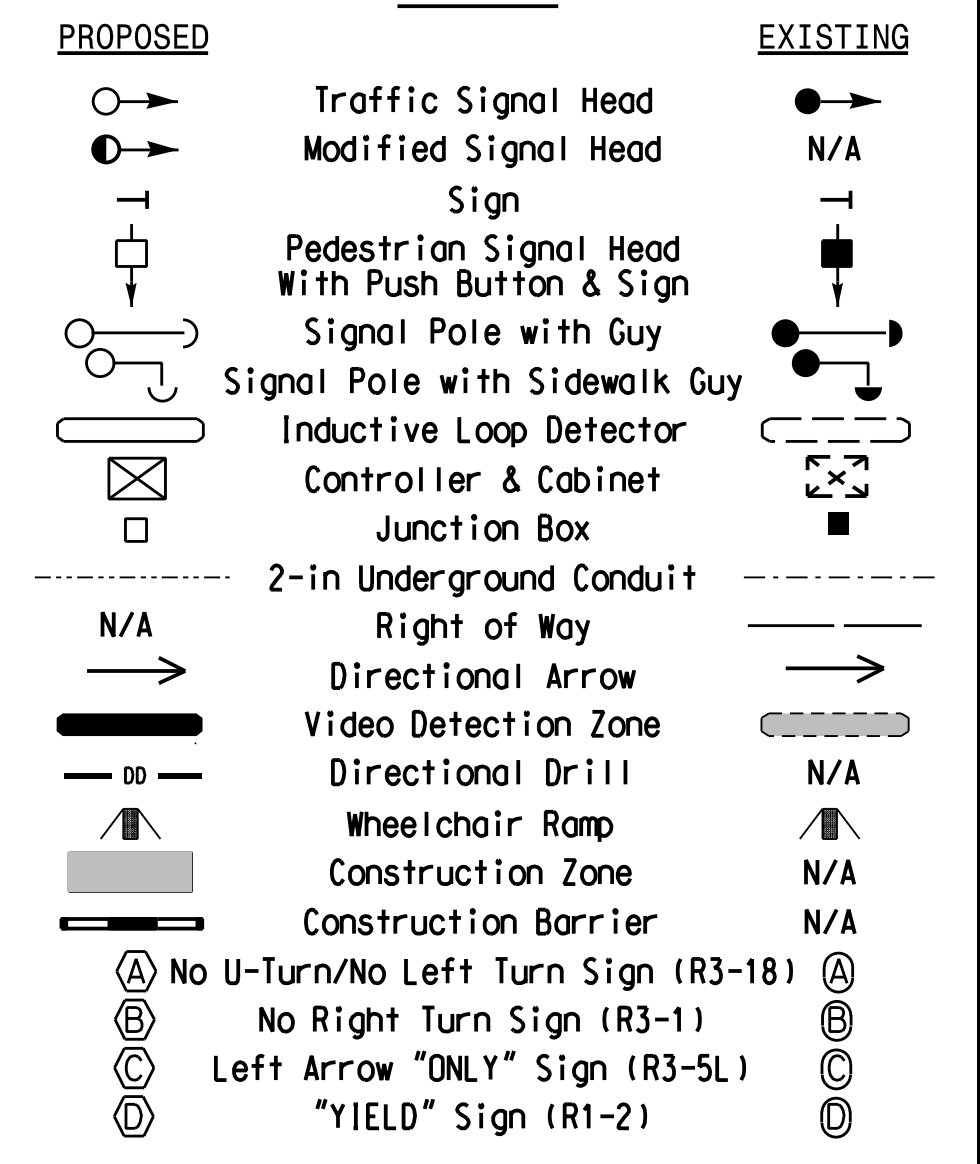
\* Video Detection Zone

**3 Phase Fully Actuated Gilead Road Closed Loop System**

**NOTES**

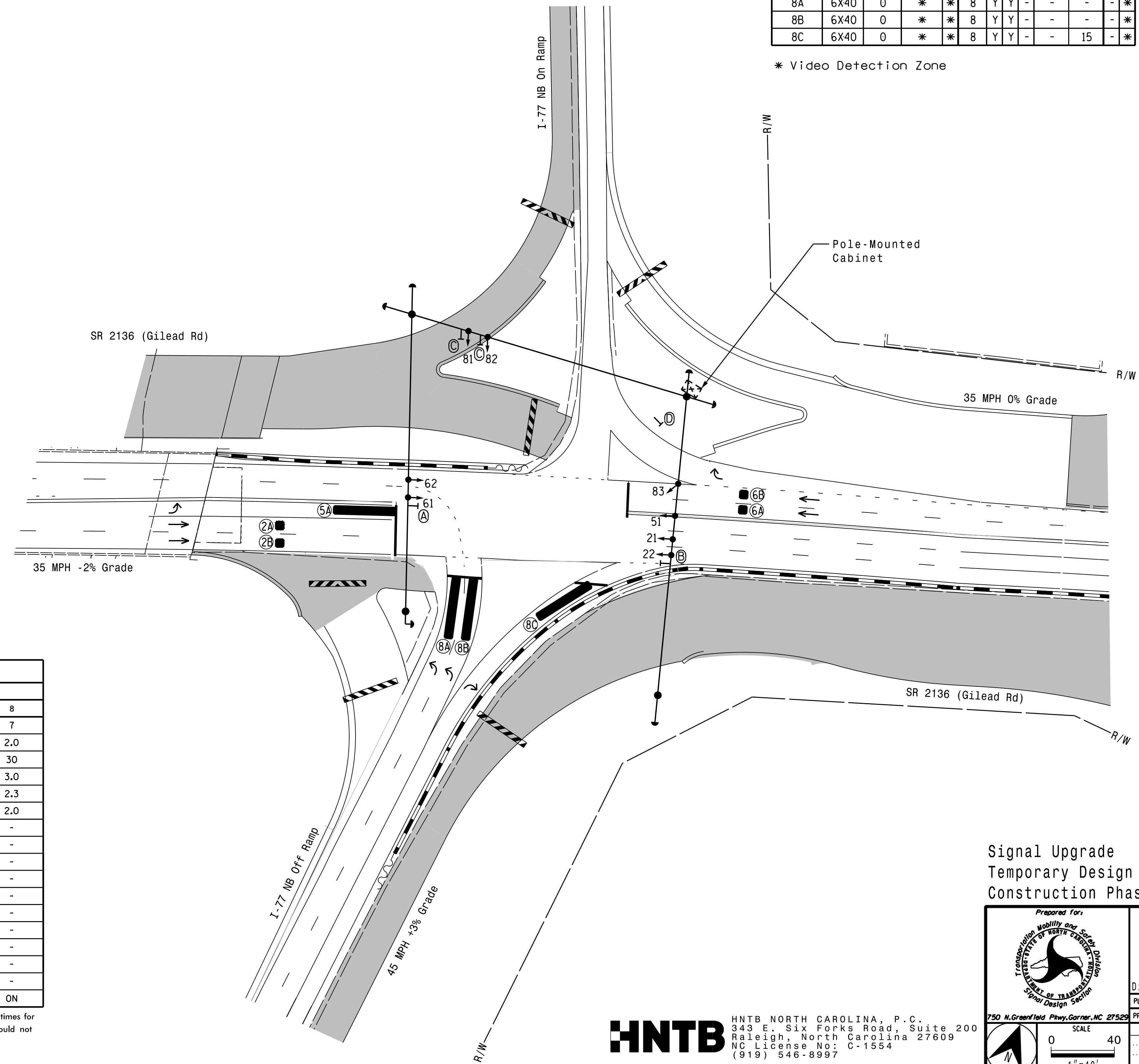
- Refer to "Roadway Standard Drawings NCDOT" dated January 2018 and "Standard Specifications for Roads and Structures" dated January 2018.
- Do not program signal for late night flashing operation unless otherwise directed by the Engineer.
- Phase 5 may be lagged.
- Reposition existing signal heads numbered 21, 22, 51, and sign ②.
- Set all detector units to presence mode.
- Incorporate Video Detection system for vehicle detection.
- Provide the Engineer with the Manufacturer's approved Video Detection locations and mounting heights to obtain detection zones as shown.
- Maximum times shown in timing chart are for free-run operation only. Coordinated signal system timing values supersede these values.
- Closed loop system data: Controller Asset #1619

**LEGEND**



FEATURE	PHASE			
	2	5	6	8
Min Green 1 *	10	7	10	7
Extension 1 *	3.0	2.0	3.0	2.0
Max Green 1 *	60	25	60	30
Yellow Clearance	4.0	3.0	4.0	3.0
Red Clearance	2.8	3.6	2.8	2.3
Red Revert	2.0	2.0	2.0	2.0
Walk 1 *	-	-	-	-
Don't Walk 1	-	-	-	-
Seconds Per Actuation *	-	-	-	-
Max Variable Initial *	-	-	-	-
Time Before Reduction *	-	-	-	-
Time To Reduce *	-	-	-	-
Minimum Gap	-	-	-	-
Recall Mode	MIN RECALL	-	MIN RECALL	-
Vehicle Call Memory	YELLOW	-	YELLOW	-
Dual Entry	-	-	-	-
Simultaneous Gap	ON	ON	ON	ON

\* These values may be field adjusted. Do not adjust Min Green and Extension times for phases 2 and 6 lower than what is shown. Min Green for all other phases should not be lower than 4 seconds.



Signal Upgrade  
Temporary Design 2  
Construction Phases II, III

**DOCUMENT NOT CONSIDERED FINAL UNLESS ALL SIGNATURES COMPLETED**

**HNTB**  
HNTB NORTH CAROLINA, P.C.  
343 E. Six Forks Road, Suite 200  
Raleigh, North Carolina 27609  
NC License No: C-1554  
(919) 546-8997

	SR 2136 (Gilead Road) at I-77 NB Ramps	SEAL NORTH CAROLINA PROFESSIONAL SEAL 031464 W. TASHA R. SIMMONS ENGINEER
	Division 10 Mecklenburg Co. Huntersville PLAN DATE: December 2017 REVIEWED BY: A.D. Klinksiek PREPARED BY: A.H. Thornburg REVIEWED BY: N.R. Simmons	REVISIONS INITI. DATE 4/23/2018 Signature: Natasha R. Simmons DATE: _____ DATE: _____