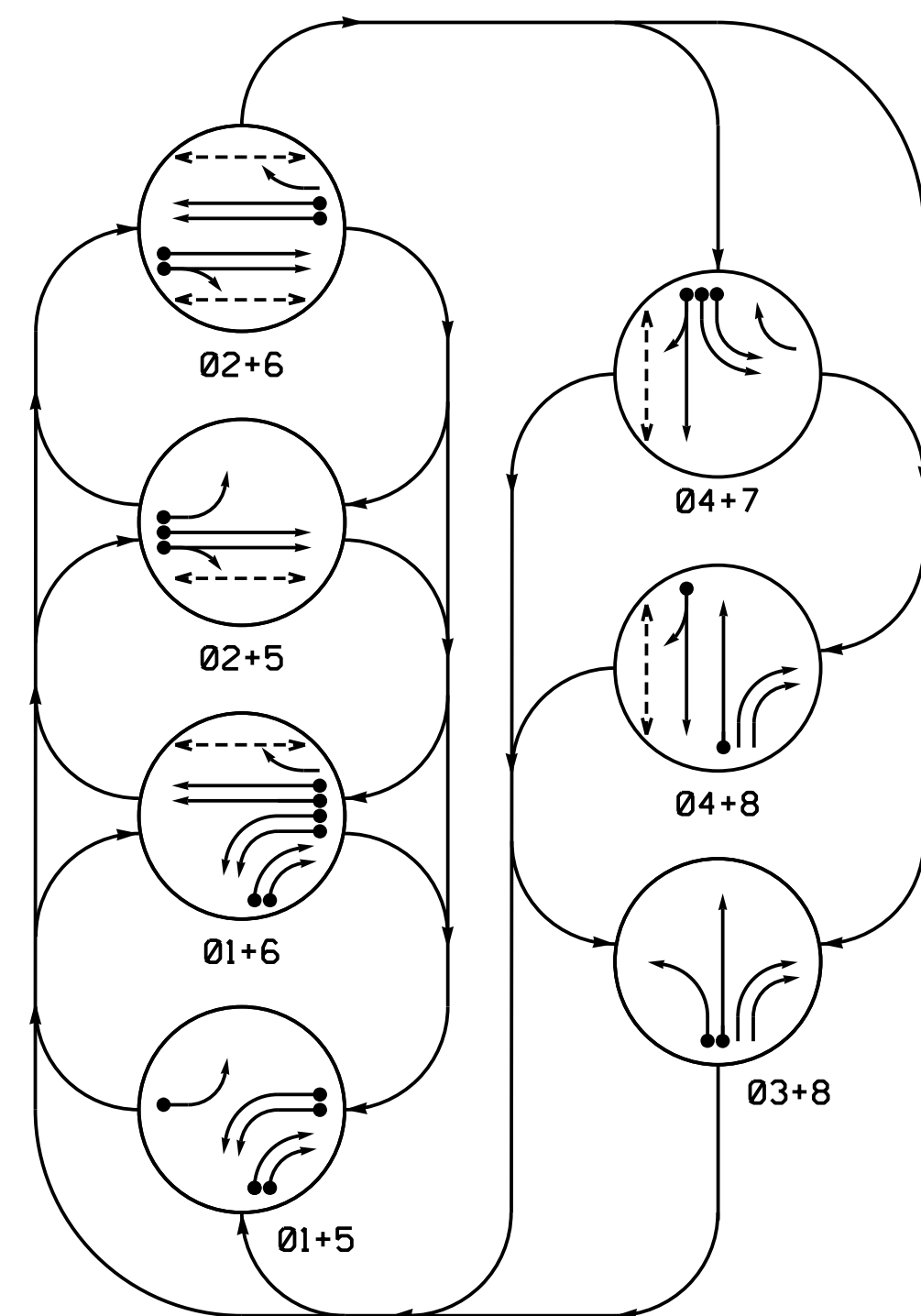


PHASING DIAGRAM



PHASING DIAGRAM DETECTION LEGEND

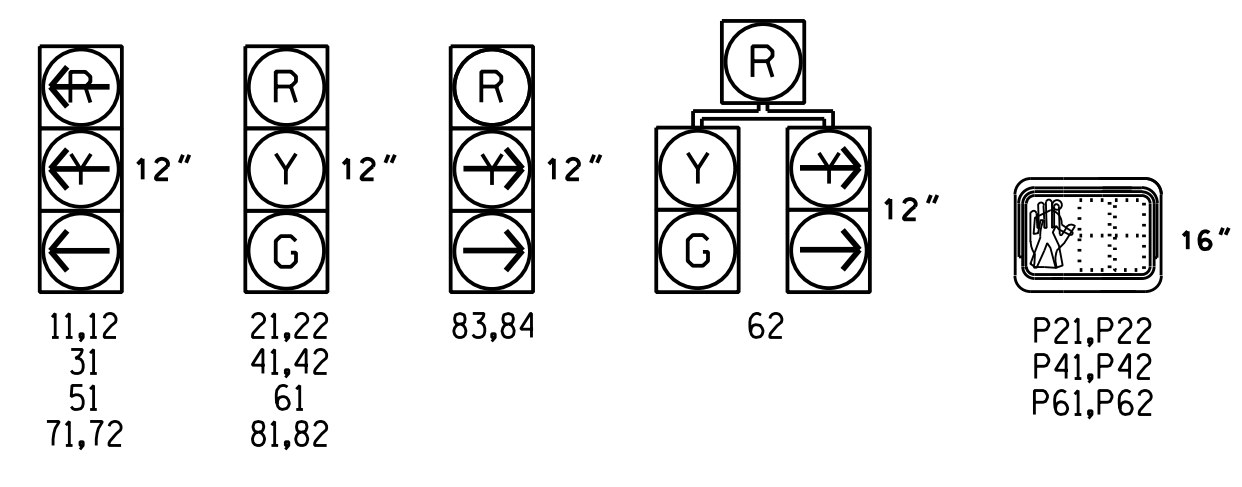
- DETECTED MOVEMENT
- UNDETECTED MOVEMENT (OVERLAP)
- UNSIGNALIZED MOVEMENT
- PEDESTRIAN MOVEMENT

TABLE OF OPERATION

SIGNAL FACE	PHASE							
	01+5	01+6	02+5	02+6	04+7	04+8	03+8	03+8
11,12								
21,22	R	R	G	G	R	R	R	Y
31								
41,42	R	R	R	R	G	G	R	R
51								
61	R	G	R	G	R	R	R	Y
62	R	G	R	G	R	R	R	Y
71,72								
81,82	R	R	R	R	R	G	G	R
83,84			R	R	R			R
P21,P22	DW	DW	W	W	DW	DW	DRK	
P41,P42	DW	DW	DW	DW	W	W	DW	DRK
P61,P62	DW	W	DW	W	DW	DW	DRK	

SIGNAL FACE I.D.

All Heads L.E.D.



OASIS 2070E LOOP & DETECTOR INSTALLATION CHART

LOOP	SIZE (FT)	DISTANCE FROM STOPBAR (FT)	TURNS	NEW LOOP	DETECTOR PROGRAMMING					SYSTEM LOOP	NEW CARD
					PHASE	CALLING	EXTENSION	FULL TIME DELAY	STRETCH TIME		
1A	6X60	0	*	*	1	Y	Y	-	-	-	*
1B	6X60	0	*	*	1	Y	Y	-	-	-	*
1C	6X60	0	*	*	1	Y	Y	-	-	15	*
1D	6X60	0	*	*	1	Y	Y	-	-	15	*
2A	6X10	70	*	*	2	Y	Y	-	-	-	*
2B	6X10	70	*	*	2	Y	Y	-	-	-	*
3A	6X60	0	*	*	3	Y	Y	-	-	-	*
4A	6X60	0	*	*	4	Y	Y	-	-	10	*
5A	6X60	0	*	*	5	Y	Y	-	-	-	*
6A	6X10	70	*	*	6	Y	Y	-	-	-	*
6B	6X10	70	*	*	6	Y	Y	-	-	-	*
7A	6X60	0	*	*	7	Y	Y	-	-	-	*
7B	6X60	0	*	*	7	Y	Y	-	-	-	*
8A	6X60	0	*	*	8	Y	Y	-	-	-	*

* Video Detection Zone

7 Phase Fully Actuated Gilead Road Closed Loop System

NOTES

- Refer to "Roadway Standard Drawings NCDOT" dated January 2018 and "Standard Specifications for Roads and Structures" dated January 2018.
- Do not program signal for late night flashing operation unless otherwise directed by the Engineer.
- Phase 1 and/or 5 may be lagged.
- The order of phase 3 and phase 7 may be reversed.
- Reposition existing signal head numbered 21,22, and 81.
- Set all detector units to presence mode.
- Omit "WALK" and flashing "DON'T WALK" with no pedestrian calls.
- Program pedestrian heads to countdown the flashing "DON'T WALK" time only.
- Incorporate Video Detection system for vehicle detection.
- Provide the Engineer with the Manufacturer's approved Video Detection locations and mounting heights to obtain detection zones as shown.
- Maximum times shown in timing chart are for free-run operation only. Coordinated signal system timing values supersede these values.
- Closed loop system data: Controller Asset #1753

LEGEND

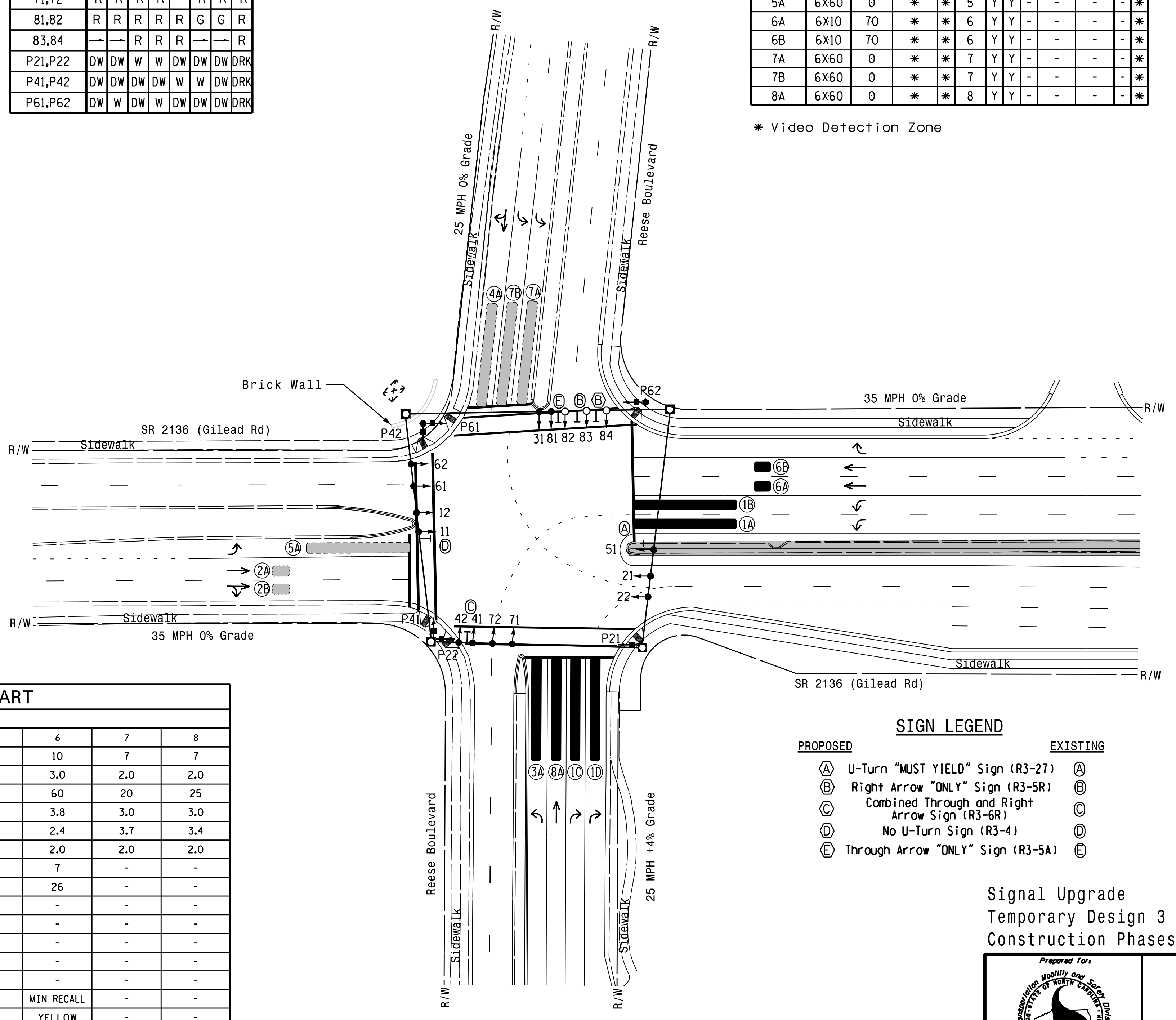
- | PROPOSED | EXISTING |
|----------|----------|
| | |
| | |
| | |
| | |
| | |
| | |
| | |
| | |
| | |
| | |

SIGN LEGEND

- | PROPOSED | EXISTING |
|---|---|
| U-Turn "MUST YIELD" Sign (R3-27) | U-Turn "MUST YIELD" Sign (R3-27) |
| Right Arrow "ONLY" Sign (R3-5R) | Right Arrow "ONLY" Sign (R3-5R) |
| Combined Through and Right Arrow Sign (R3-6R) | Combined Through and Right Arrow Sign (R3-6R) |
| No U-Turn Sign (R3-4) | No U-Turn Sign (R3-4) |
| Through Arrow "ONLY" Sign (R3-5A) | Through Arrow "ONLY" Sign (R3-5A) |

FEATURE	PHASE							
	1	2	3	4	5	6	7	8
Min Green 1 *	7	10	7	7	7	10	7	7
Extension 1 *	2.0	3.0	2.0	2.0	2.0	3.0	2.0	2.0
Max Green 1 *	30	60	15	25	15	60	20	25
Yellow Clearance	3.0	3.8	3.0	3.2	3.0	3.8	3.0	3.0
Red Clearance	3.5	2.4	3.4	3.3	3.4	2.4	3.7	3.4
Red Revert	2.0	2.0	2.0	2.0	2.0	2.0	2.0	2.0
Walk 1 *	-	7	-	7	-	7	-	-
Don't Walk 1	-	26	-	25	-	26	-	-
Seconds Per Actuation *	-	-	-	-	-	-	-	-
Max Variable Initial *	-	-	-	-	-	-	-	-
Time Before Reduction *	-	-	-	-	-	-	-	-
Time To Reduce *	-	-	-	-	-	-	-	-
Minimum Gap	-	-	-	-	-	-	-	-
Recall Mode	-	MIN RECALL	-	-	-	MIN RECALL	-	-
Vehicle Call Memory	-	YELLOW	-	-	-	YELLOW	-	-
Dual Entry	-	-	-	-	-	-	-	-
Simultaneous Gap	ON	ON	ON	ON	ON	ON	ON	ON

* These values may be field adjusted. Do not adjust Min Green and Extension times for phases 2 and 6 lower than what is shown. Min Green for all other phases should not be lower than 4 seconds.



Signal Upgrade Temporary Design 3 Construction Phases IV,V

DOCUMENT NOT CONSIDERED FINAL UNLESS ALL SIGNATURES COMPLETED

SR 2136 (Gilead Road)
at
Reese Boulevard

Division 10 Mecklenburg Co. Huntersville
PLAN DATE: December 2017 REVIEWED BY: A.D. Klinsky
PREPARED BY: A.H. Thornburg REVIEWED BY: N.R. Simmons

REVISIONS	INIT.	DATE

SEAL

DocuSigned by:
Natasha R. Simmons
DATE: 4/23/2018
SIG. INVENTORY NO. 10-1753 T3

HNTB HNTB NORTH CAROLINA, P.C.
343 E. Six Forks Road, Suite 200
Raleigh, North Carolina 27609
NC License No: C-1554
(919) 546-8997