

**This electronic collection of documents is provided  
for the convenience of the user  
and is Not a Certified Document –**

**The documents contained herein were originally issued  
and sealed by the individuals whose names and license  
numbers appear on each page, on the dates appearing  
with their signature on that page.**

**This file or an individual page  
shall not be considered a certified document.**

6/12/2018 K:\RAL\_Roadway\01036392 - R-3822 and U-5725\Utilities\U50VPro\U5725\_R3822\_u01.dgn

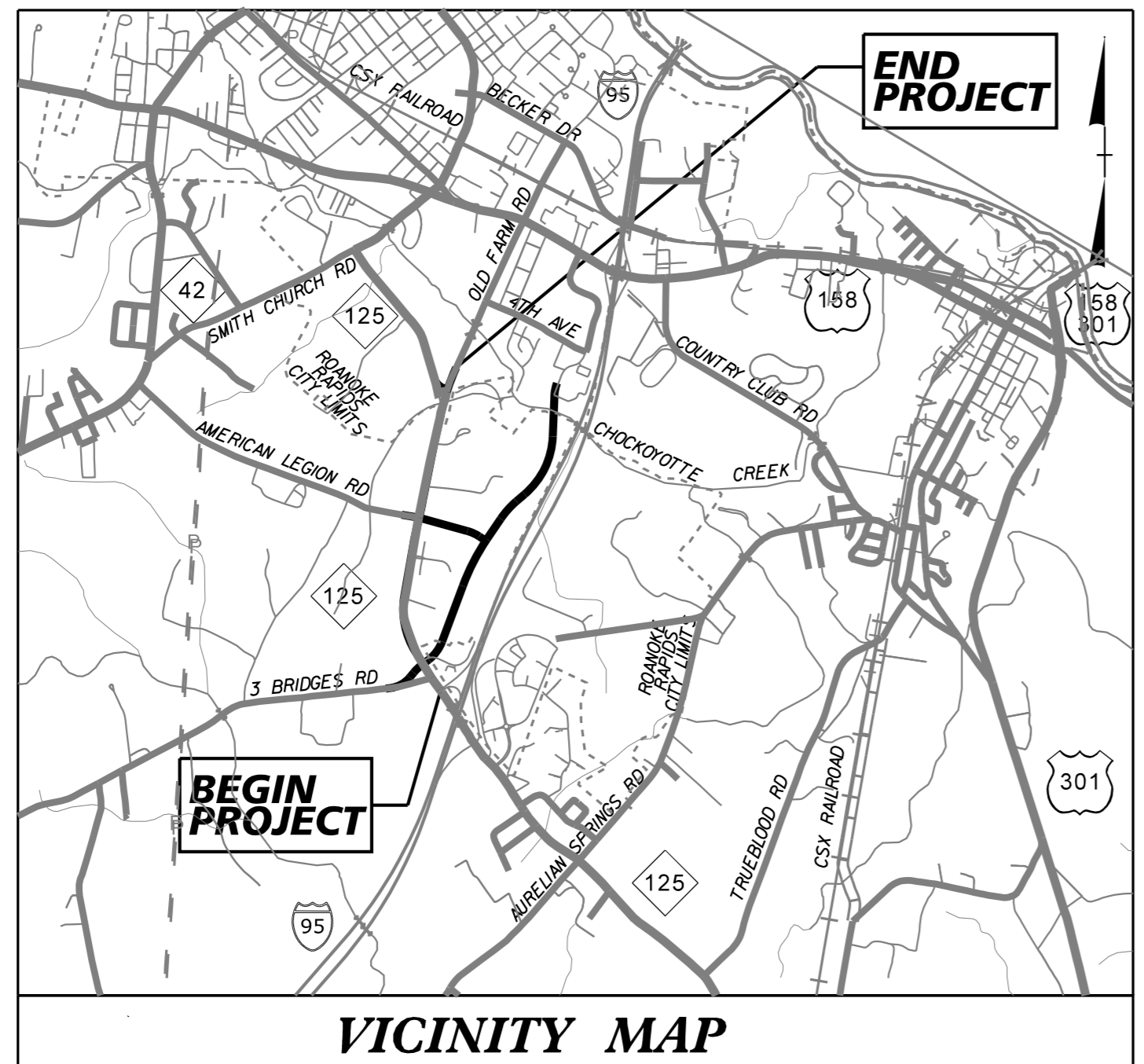
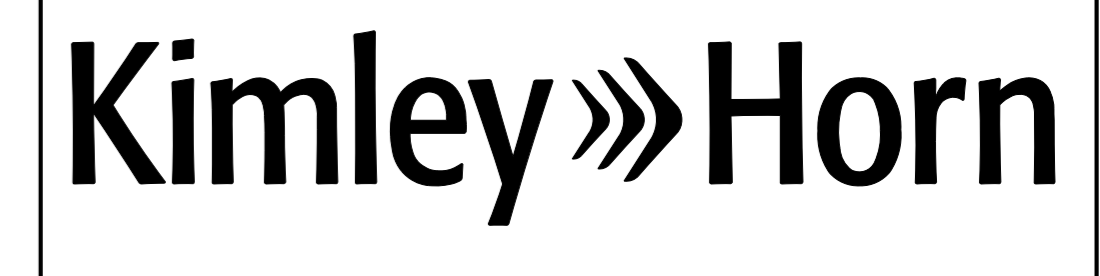
**CONTRACT:**

**TIP PROJECTS: U-5725/R-3822**

STATE OF NORTH CAROLINA  
DIVISION OF HIGHWAYS

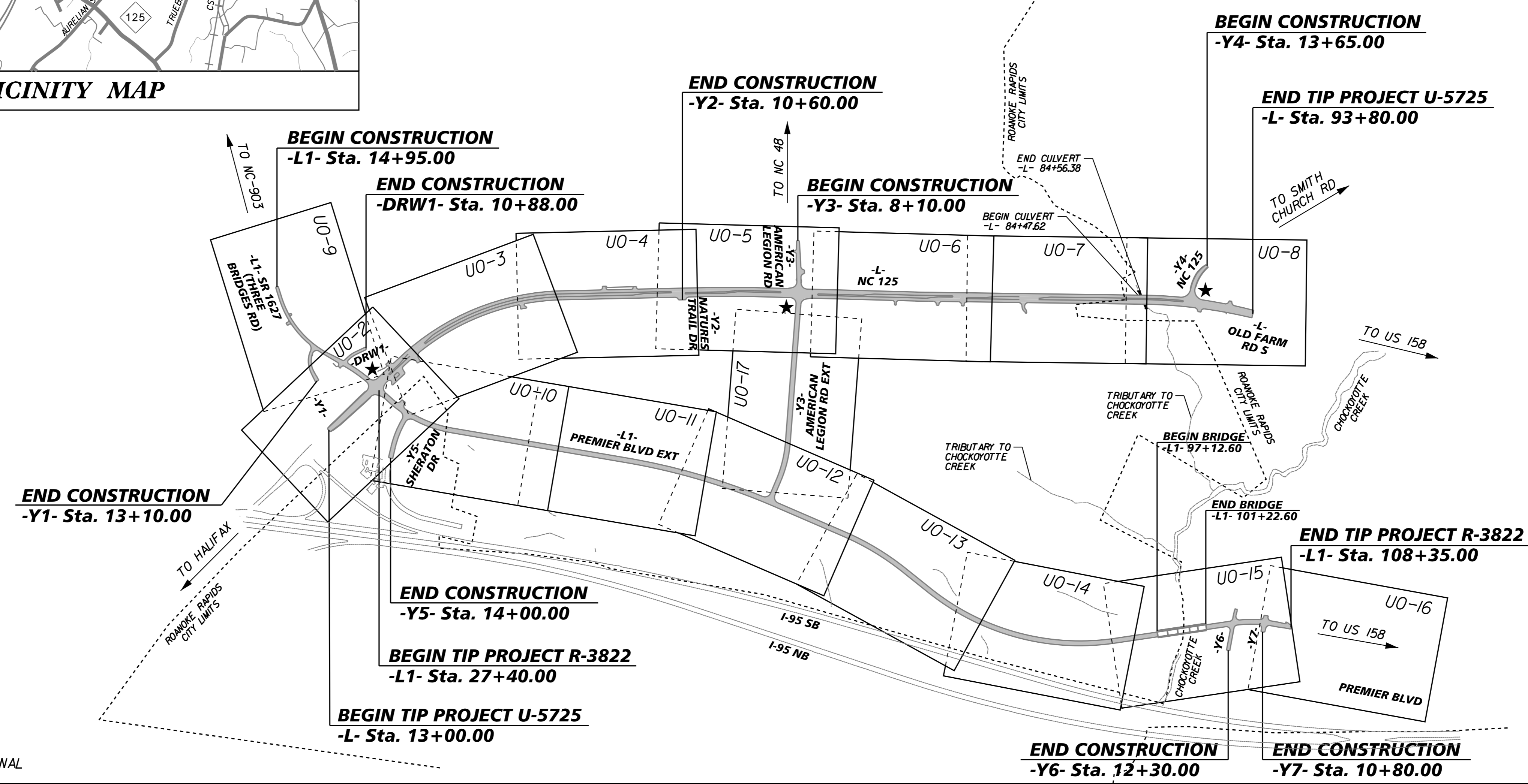
**UTILITIES BY OTHERS PLANS  
HALIFAX COUNTY**

T.I.P. NO.	SHEET NO.
U-5725/R-3822	UO-1



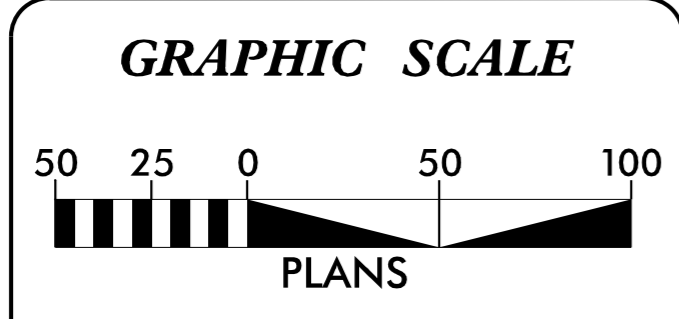
**LOCATION:** NC 125 FROM I-95 TO OLD FARM ROAD SOUTH, SR 1627 (THREE BRIDGES ROAD) FROM NC 125 TO PREMIER BOULEVARD

**TYPE OF WORK:** UTILITY RELOCATIONS BY OTHERS



★ PROPOSED TRAFFIC SIGNAL

DOCUMENT NOT CONSIDERED FINAL UNLESS ALL SIGNATURES COMPLETED



INDEX OF SHEETS	
SHEET NO.	DESCRIPTION
UO-1	TITLE SHEET
UO-2 THRU UO-17	UTILITY BY OTHERS PLAN SHEETS

UTILITY OWNERS ON PROJECT		
(A) ROANOKE ELECTRIC:	BILL BUNN	252-536-9344
(B) DOMINION POWER:	JAMES PULLEY	252-287-2157
(C) HALIFAX COUNTY PUBLIC UTILITIES:	GREG GRIFFIN	252-583-1451
(D) ROANOKE RAPIDS SANITARY DISTRICT:	JUSTIN BLACKMON	252-885-0556
(E) PIEDMONT NATURAL GAS:	JEREMY MEADS	252-722-1792
(F) CENTURYLINK:	JON RADUNS	252-331-9311
(G) CHARTER SPECTRUM:	WILBUR HAYNES	252-489-1194
(H) LUMOS NETWORKS:	RYAN HUSSEY	919-602-7185
(I) HALIFAX ACADEMY:	MICHAEL FERGUSON	252-537-8527

PREPARED FOR OFFICE OF:  
**DIVISION OF HIGHWAYS  
UTILITIES UNIT  
UTILITIES ENGINEERING**

1555 MAIL SERVICES CENTER  
RALEIGH, NC 27699-1555  
PHONE (919) 707-6690  
FAX (919) 250-4151

XXXXX \_\_\_\_\_

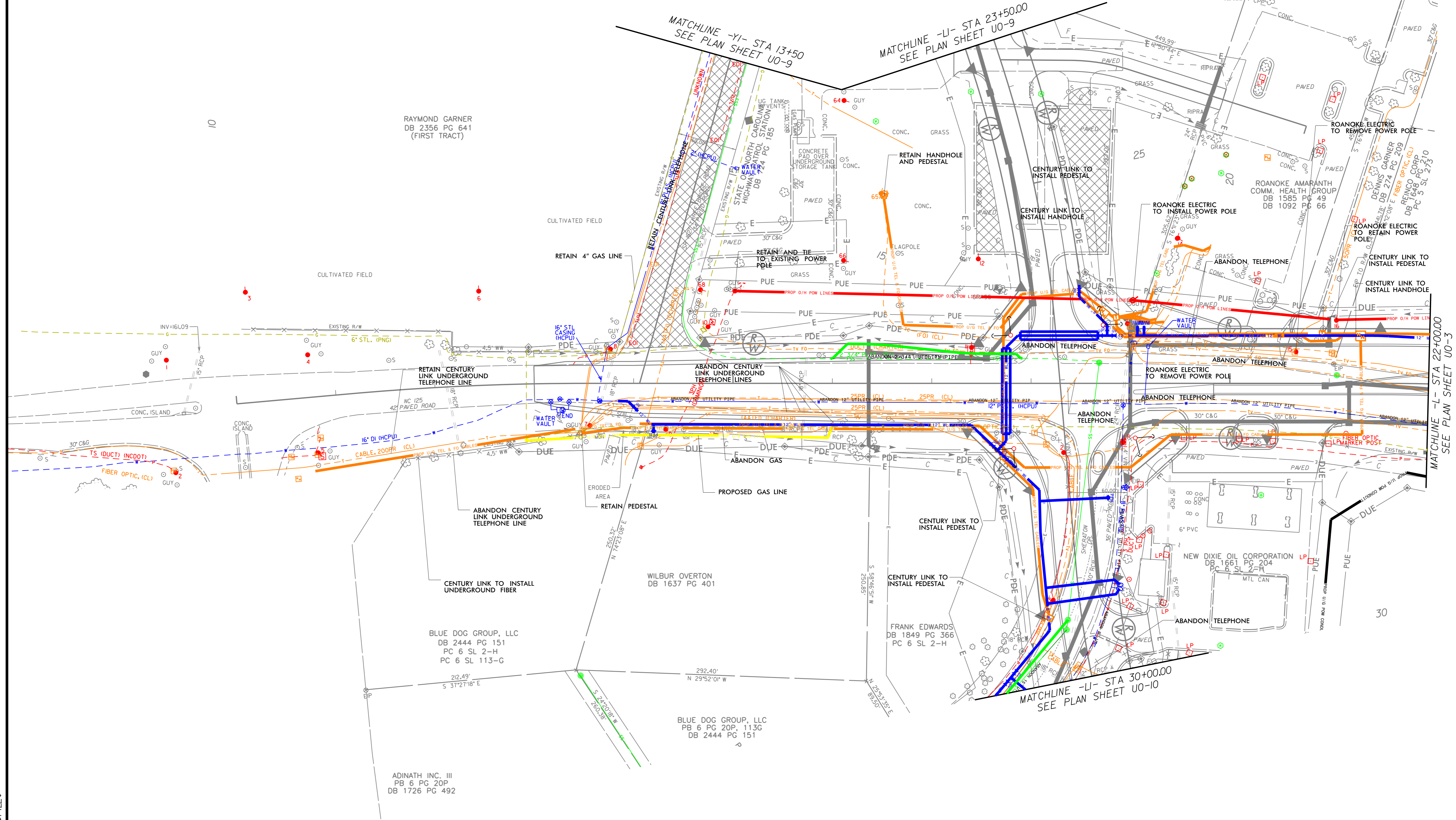
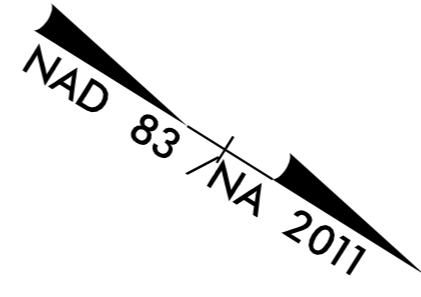
XXXXX \_\_\_\_\_

UTILITIES SECTION ENGINEER

UTILITIES PROJECT ENGINEER

### UTILITIES BY OTHERS

**NOTE:**  
 ALL PROPOSED UTILITY WORK SHOWN ON THIS SHEET WILL BE DONE BY OTHERS. NO PAYMENT WILL BE MADE TO THE CONTRACTOR FOR PROPOSED UTILITY WORK SHOWN ON THIS SHEET.



MATCHLINE -YI- STA 13+50  
 SEE PLAN SHEET U0-9

MATCHLINE -LI- STA 23+50.00  
 SEE PLAN SHEET U0-9

MATCHLINE -LI- STA 22+00.00  
 SEE PLAN SHEET U0-3

MATCHLINE -LI- STA 30+00.00  
 SEE PLAN SHEET U0-10

RAYMOND GARNER  
 DB 2356 PG 641  
 (FIRST TRACT)

WILBUR OVERTON  
 DB 1637 PG 401

BLUE DOG GROUP, LLC  
 DB 2444 PG 151  
 PC 6 SL 2-H  
 PC 6 SL 113-G

BLUE DOG GROUP, LLC  
 PB 6 PG 20P, 113G  
 DB 2444 PG 151

ADINATH INC. III  
 PB 6 PG 20P  
 DB 1726 PG 492

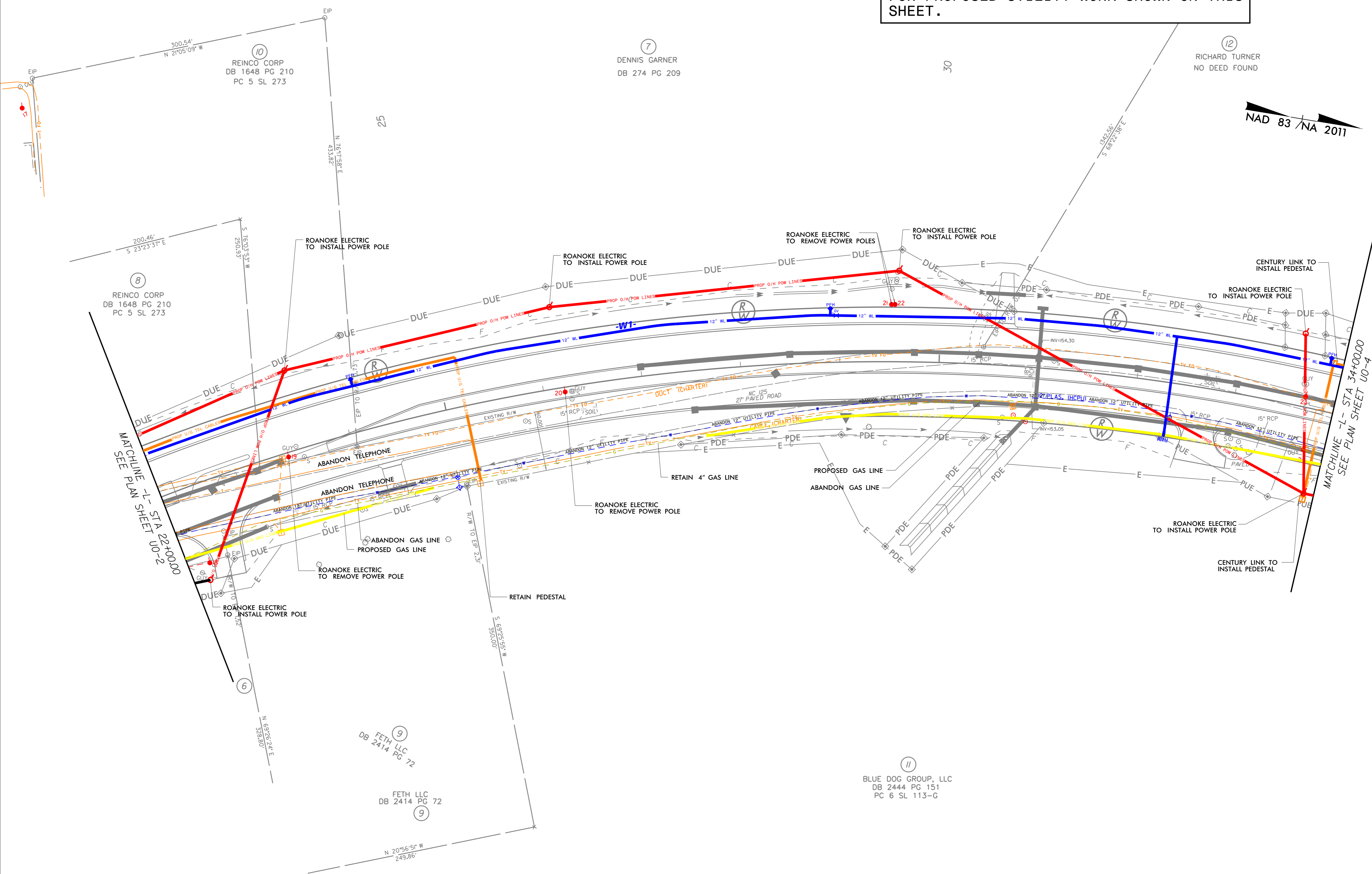
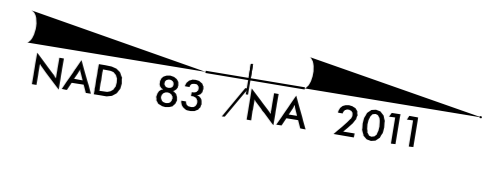
\$FILE\$

6/12/2018

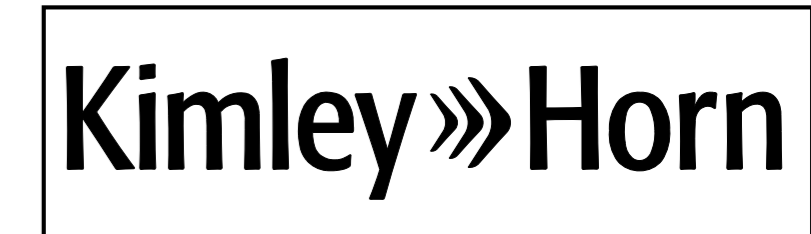


UTILITIES BY OTHERS

NOTE:  
 ALL PROPOSED UTILITY WORK SHOWN ON THIS SHEET WILL BE DONE BY OTHERS. NO PAYMENT WILL BE MADE TO THE CONTRACTOR FOR PROPOSED UTILITY WORK SHOWN ON THIS SHEET.

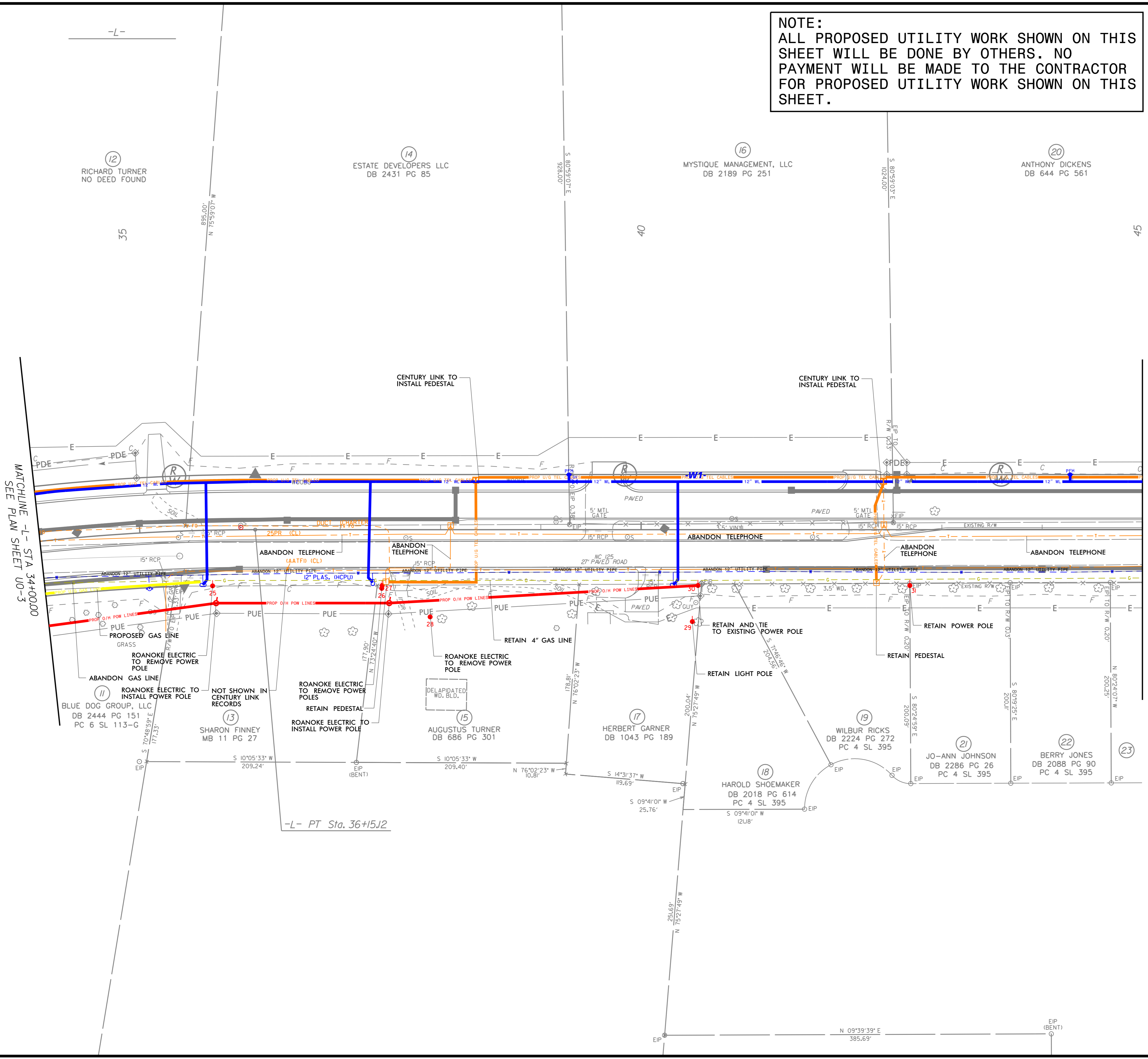
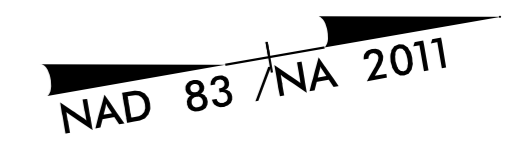


\$FILE\$  
6/12/2018



UTILITIES BY OTHERS

**NOTE:**  
ALL PROPOSED UTILITY WORK SHOWN ON THIS SHEET WILL BE DONE BY OTHERS. NO PAYMENT WILL BE MADE TO THE CONTRACTOR FOR PROPOSED UTILITY WORK SHOWN ON THIS SHEET.

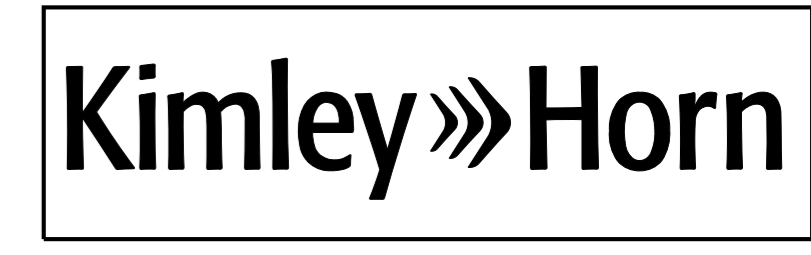


MATCHLINE -L- STA 34+00.00  
SEE PLAN SHEET U0-3

MATCHLINE -L- STA 45+00.00  
SEE PLAN SHEET U0-5

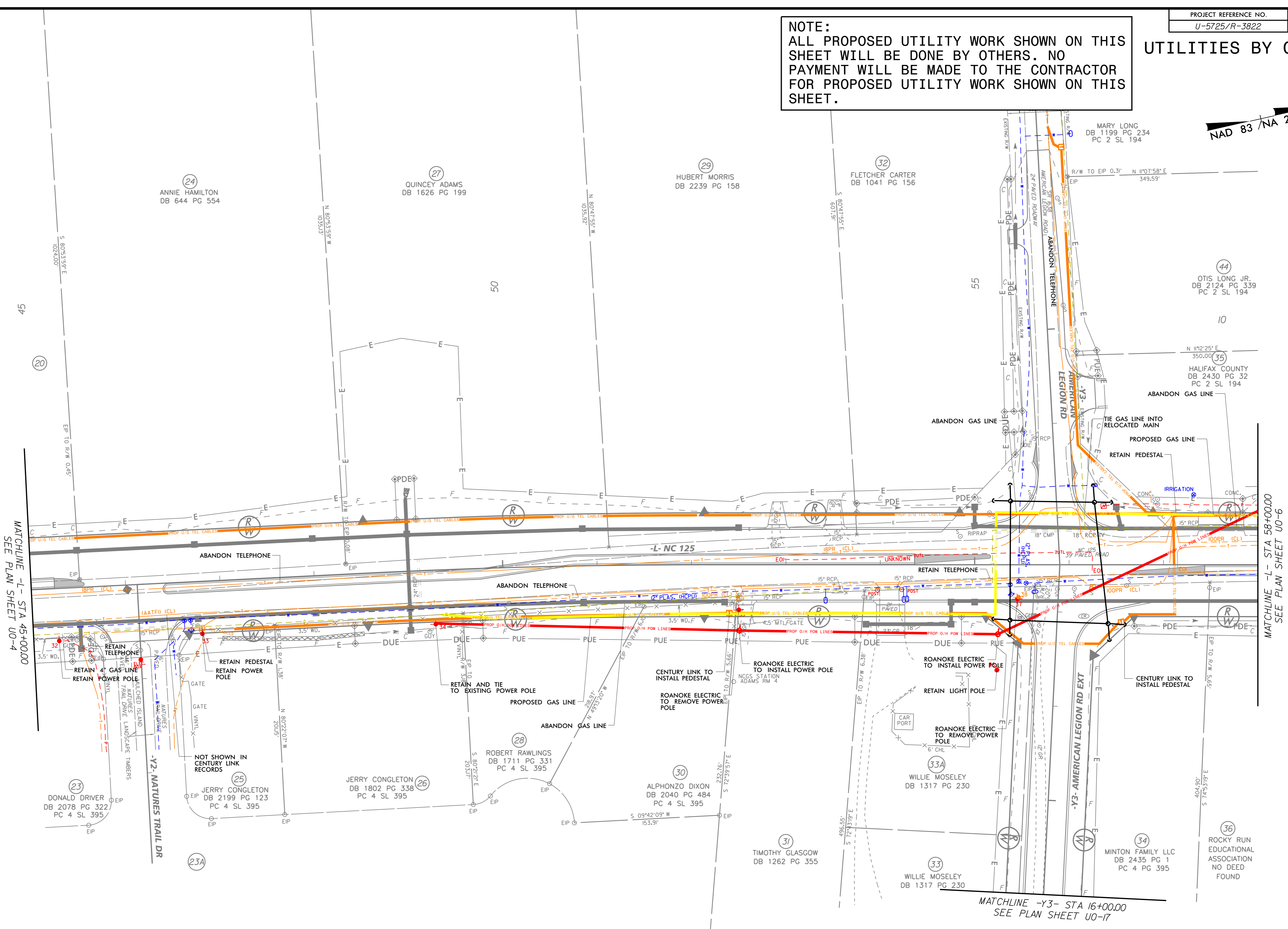
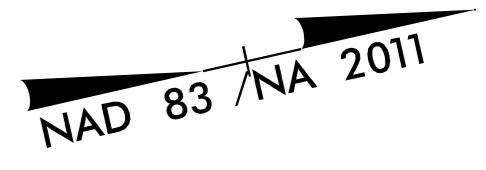
-L- PT Sta. 36+15.12

6/12/2018 \$FILE\$



# UTILITIES BY OTHERS

**NOTE:**  
 ALL PROPOSED UTILITY WORK SHOWN ON THIS SHEET WILL BE DONE BY OTHERS. NO PAYMENT WILL BE MADE TO THE CONTRACTOR FOR PROPOSED UTILITY WORK SHOWN ON THIS SHEET.



MATCHLINE -L- STA 45+00.00  
SEE PLAN SHEET U0-4

MATCHLINE -L- STA 58+00.00  
SEE PLAN SHEET U0-6

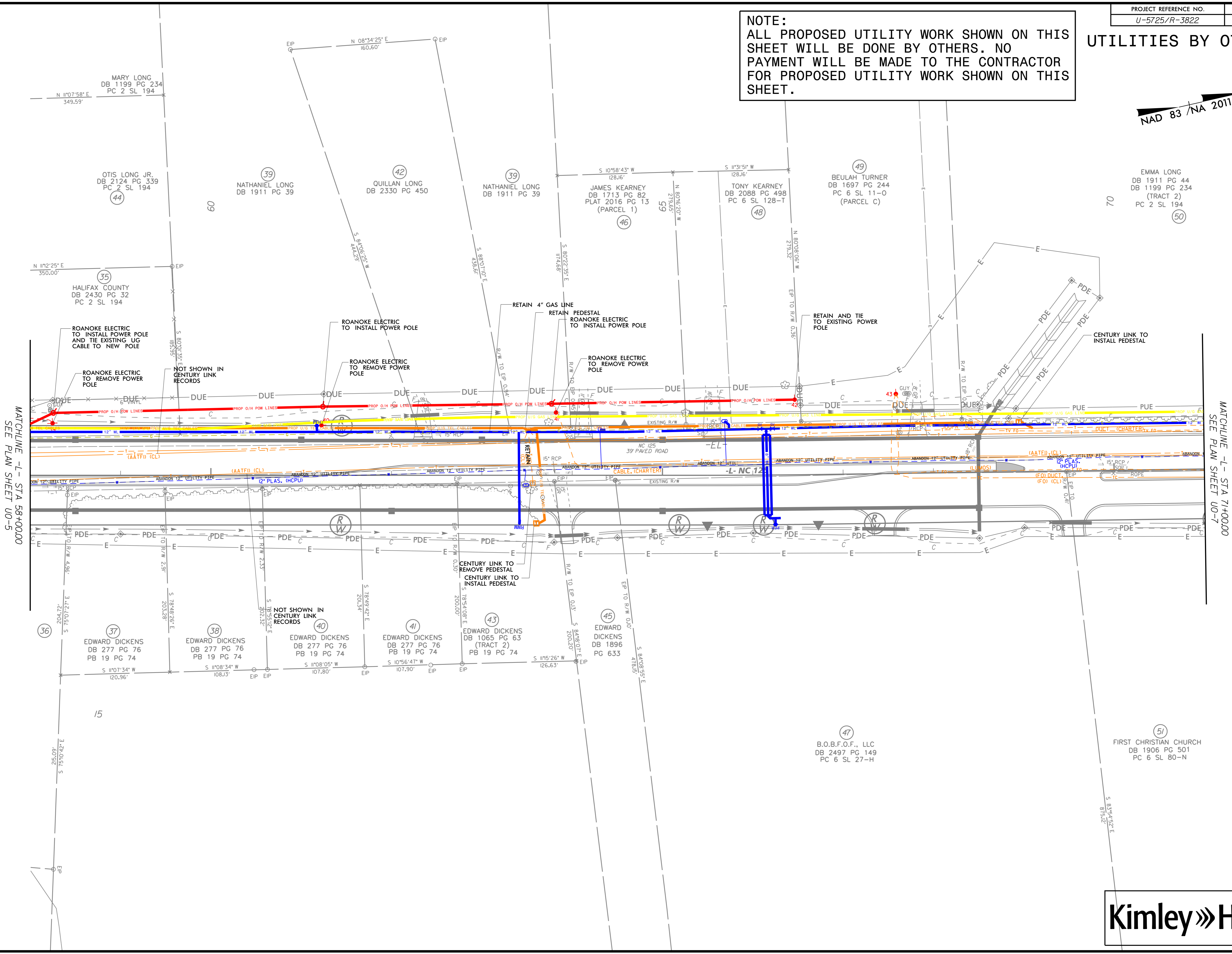
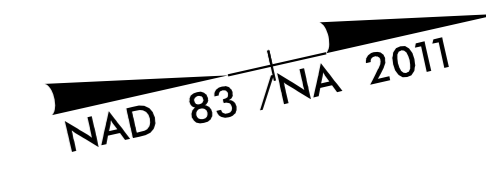
MATCHLINE -Y3- STA 16+00.00  
SEE PLAN SHEET U0-17

\$ FILE \$  
6/12/2018



### UTILITIES BY OTHERS

**NOTE:**  
ALL PROPOSED UTILITY WORK SHOWN ON THIS SHEET WILL BE DONE BY OTHERS. NO PAYMENT WILL BE MADE TO THE CONTRACTOR FOR PROPOSED UTILITY WORK SHOWN ON THIS SHEET.



MATCHLINE -L- STA 58+00.00  
SEE PLAN SHEET U0-5

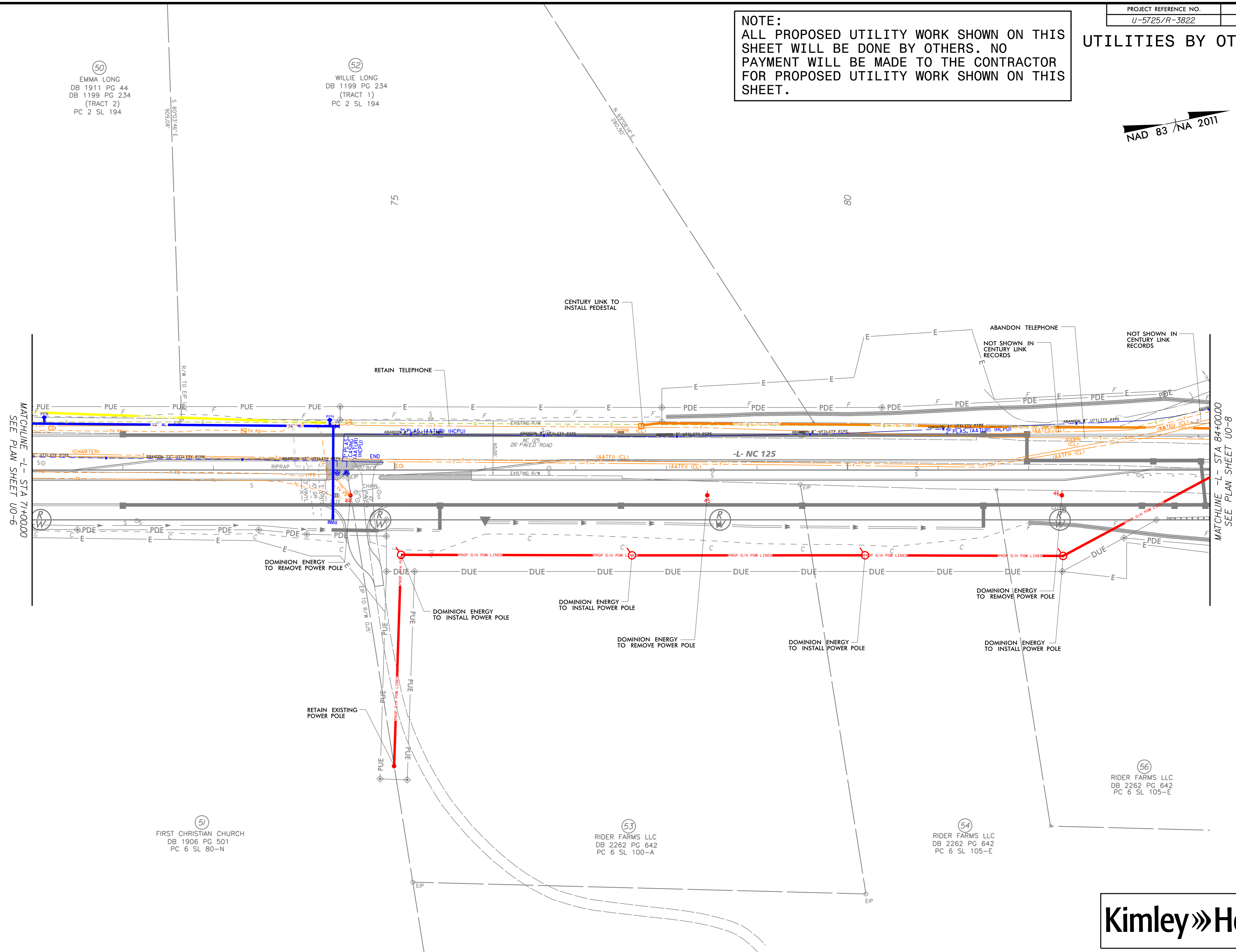
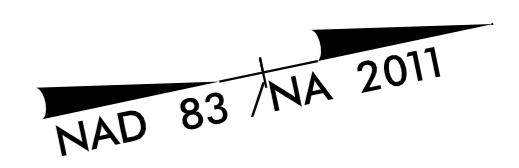
MATCHLINE -L- STA 71+00.00  
SEE PLAN SHEET U0-7

6/12/2018 \$FILE\$



UTILITIES BY OTHERS

NOTE:  
ALL PROPOSED UTILITY WORK SHOWN ON THIS SHEET WILL BE DONE BY OTHERS. NO PAYMENT WILL BE MADE TO THE CONTRACTOR FOR PROPOSED UTILITY WORK SHOWN ON THIS SHEET.



50  
EMMA LONG  
DB 1911 PG 44  
DB 1199 PG 234  
(TRACT 2)  
PC 2 SL 194

52  
WILLIE LONG  
DB 1199 PG 234  
(TRACT 1)  
PC 2 SL 194

MATCHLINE -L- STA 7+00.00  
SEE PLAN SHEET U0-6

MATCHLINE -L- STA 84+00.00  
SEE PLAN SHEET U0-8

51  
FIRST CHRISTIAN CHURCH  
DB 1906 PG 501  
PC 6 SL 80-N

53  
RIDER FARMS LLC  
DB 2262 PG 642  
PC 6 SL 100-A

54  
RIDER FARMS LLC  
DB 2262 PG 642  
PC 6 SL 105-E

56  
RIDER FARMS LLC  
DB 2262 PG 642  
PC 6 SL 105-E

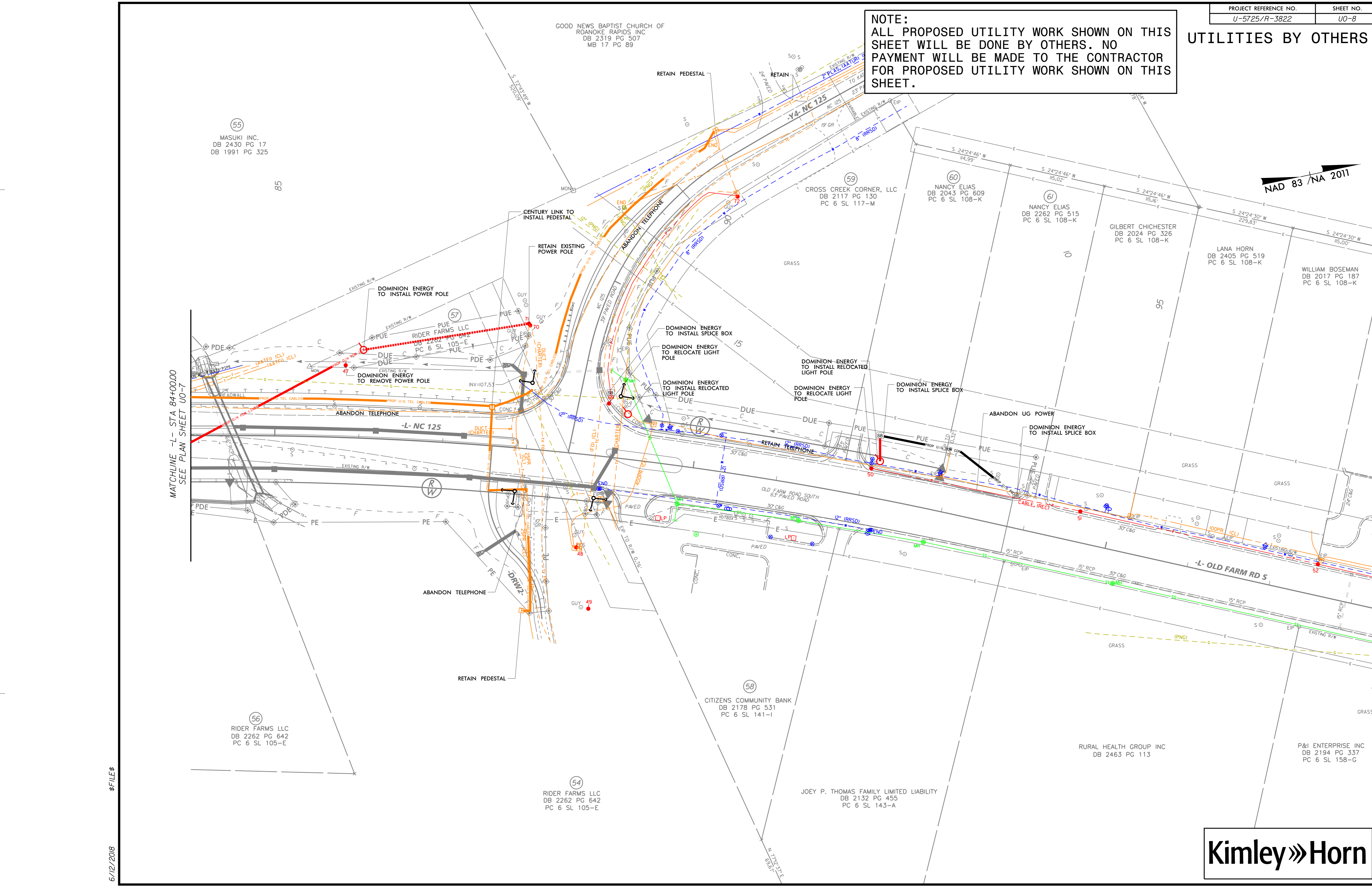
\$FILE\$  
6/12/2018





UTILITIES BY OTHERS

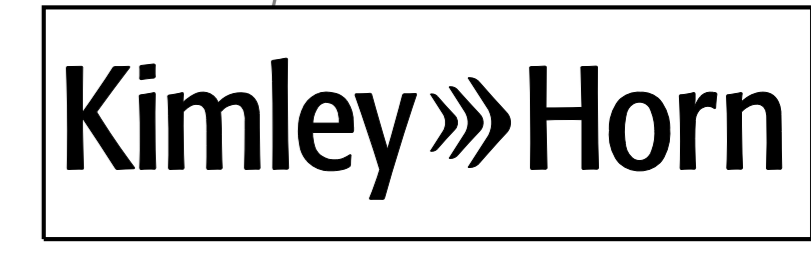
**NOTE:**  
 ALL PROPOSED UTILITY WORK SHOWN ON THIS SHEET WILL BE DONE BY OTHERS. NO PAYMENT WILL BE MADE TO THE CONTRACTOR FOR PROPOSED UTILITY WORK SHOWN ON THIS SHEET.



MATCHLINE -L- STA 84+00.00  
SEE PLAN SHEET U0-7

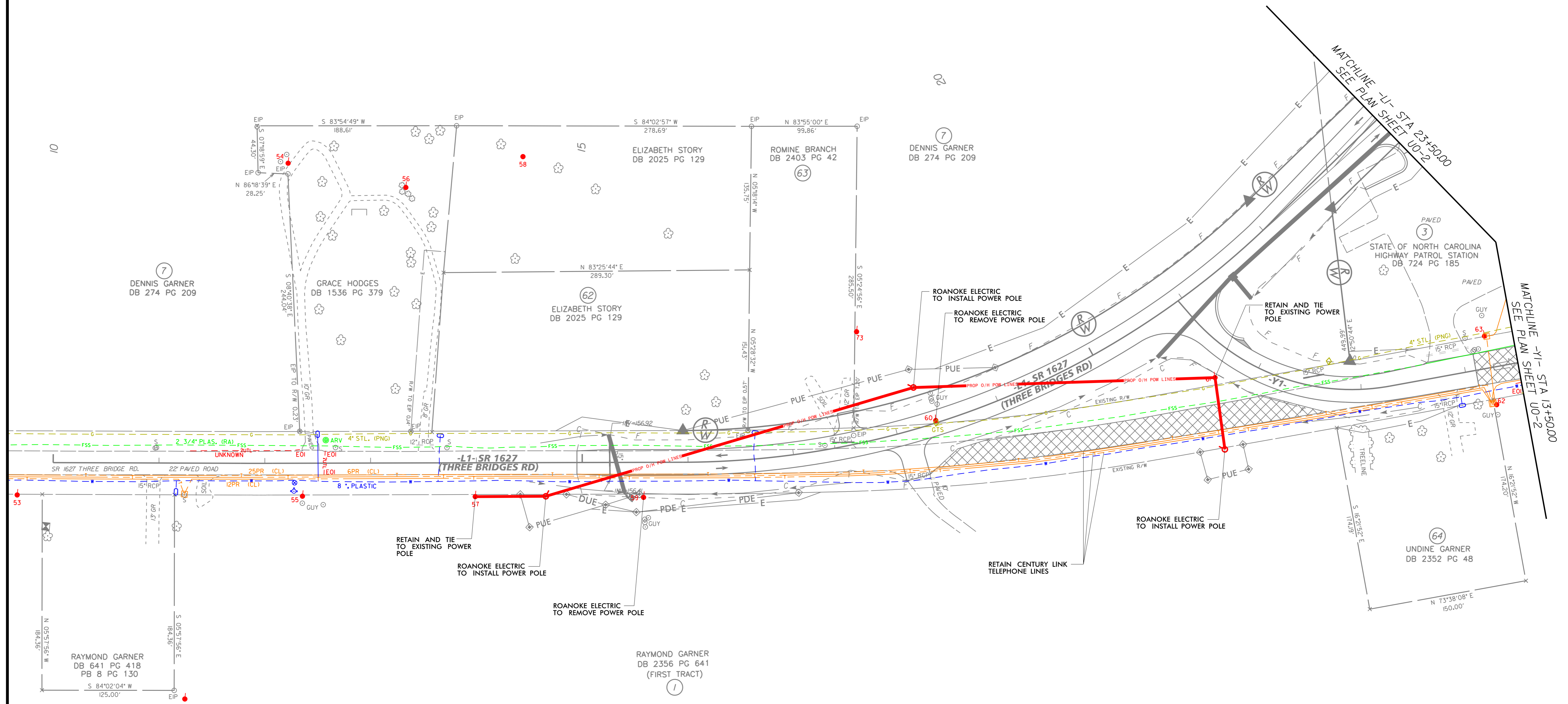
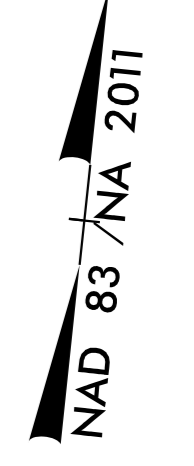
NAD 83 / NA 2011

\$FILE\$  
6/12/2018



UTILITIES BY OTHERS

NOTE:  
ALL PROPOSED UTILITY WORK SHOWN ON THIS SHEET WILL BE DONE BY OTHERS. NO PAYMENT WILL BE MADE TO THE CONTRACTOR FOR PROPOSED UTILITY WORK SHOWN ON THIS SHEET.

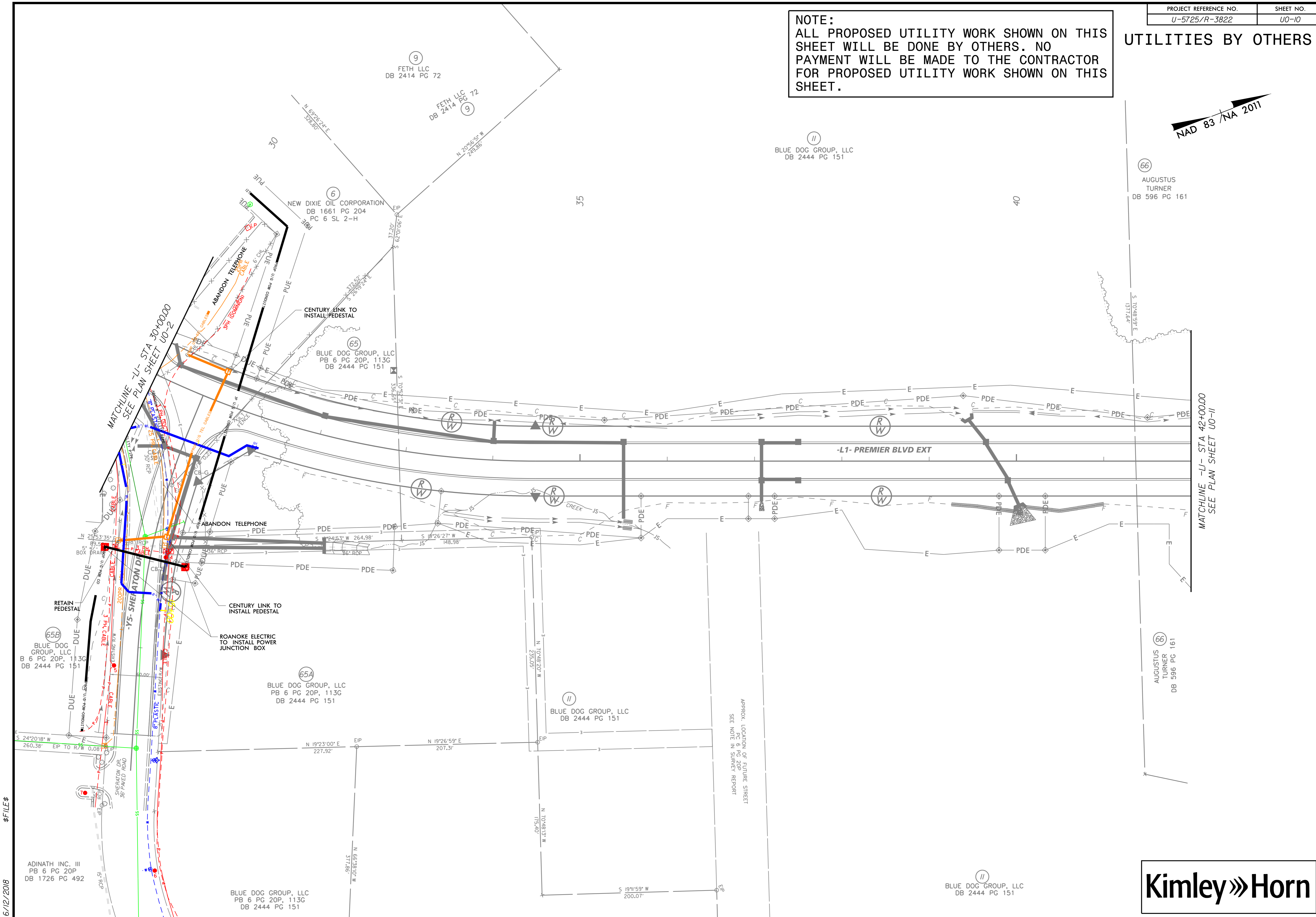
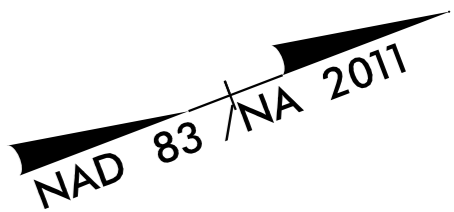


6/12/2018 \$FILE\$



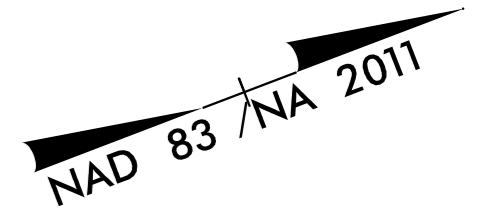
UTILITIES BY OTHERS

**NOTE:**  
 ALL PROPOSED UTILITY WORK SHOWN ON THIS SHEET WILL BE DONE BY OTHERS. NO PAYMENT WILL BE MADE TO THE CONTRACTOR FOR PROPOSED UTILITY WORK SHOWN ON THIS SHEET.

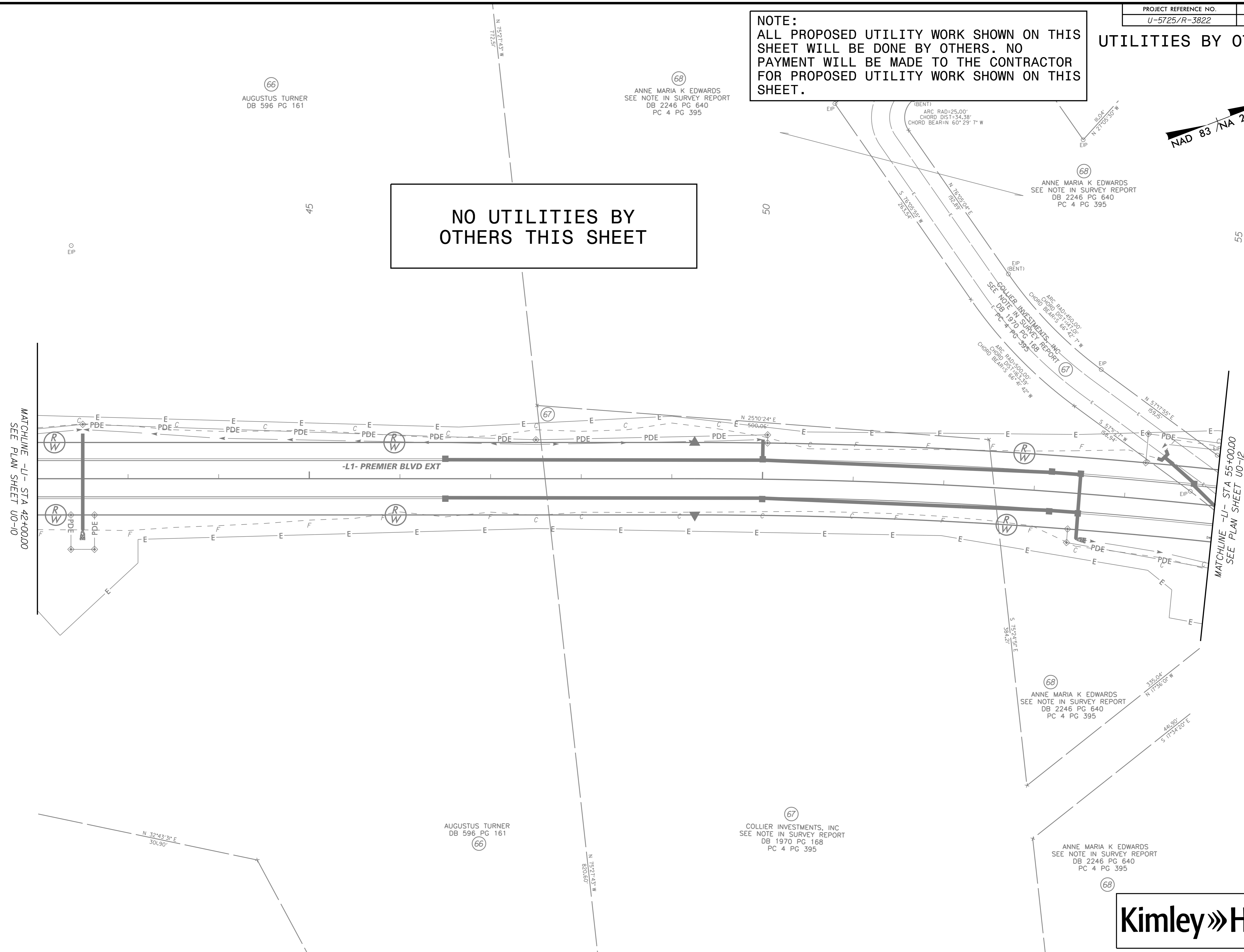


UTILITIES BY OTHERS

**NOTE:**  
 ALL PROPOSED UTILITY WORK SHOWN ON THIS SHEET WILL BE DONE BY OTHERS. NO PAYMENT WILL BE MADE TO THE CONTRACTOR FOR PROPOSED UTILITY WORK SHOWN ON THIS SHEET.



**NO UTILITIES BY OTHERS THIS SHEET**



MATCHLINE -LI- STA 42+00.00  
SEE PLAN SHEET U0-10

MATCHLINE -LI- STA 55+00.00  
SEE PLAN SHEET U0-12

66  
 AUGUSTUS TURNER  
 DB 596 PG 161

68  
 ANNE MARIA K EDWARDS  
 SEE NOTE IN SURVEY REPORT  
 DB 2246 PG 640  
 PC 4 PG 395

68  
 ANNE MARIA K EDWARDS  
 SEE NOTE IN SURVEY REPORT  
 DB 2246 PG 640  
 PC 4 PG 395

66  
 AUGUSTUS TURNER  
 DB 596 PG 161

67  
 COLLIER INVESTMENTS, INC  
 SEE NOTE IN SURVEY REPORT  
 DB 1970 PG 168  
 PC 4 PG 395

68  
 ANNE MARIA K EDWARDS  
 SEE NOTE IN SURVEY REPORT  
 DB 2246 PG 640  
 PC 4 PG 395

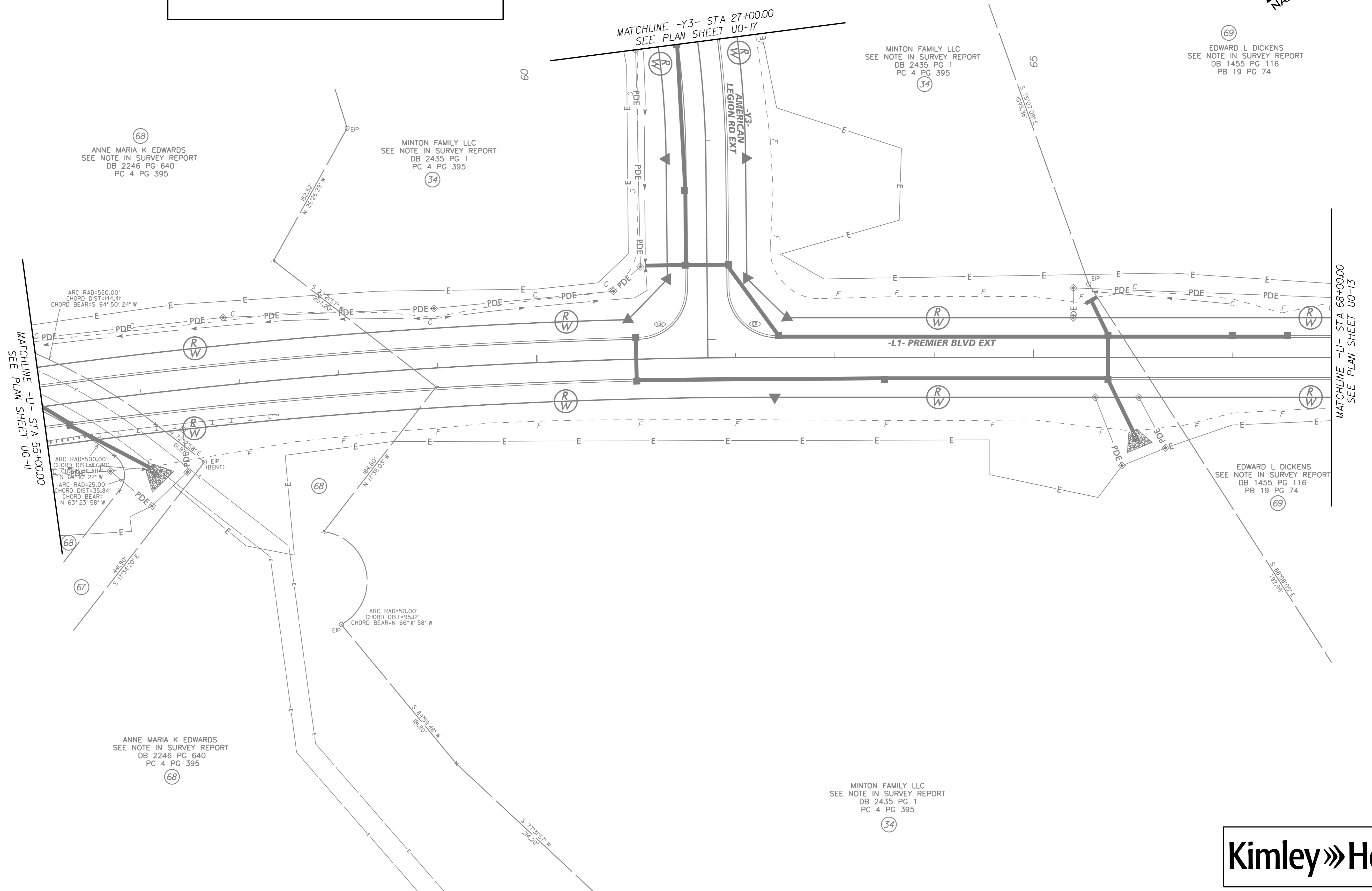
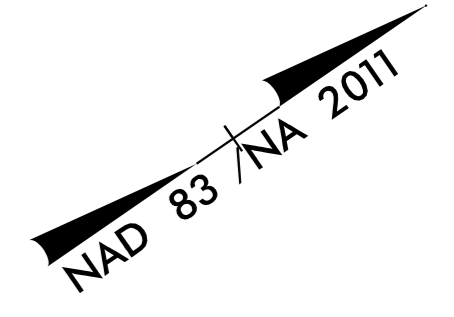
68  
 ANNE MARIA K EDWARDS  
 SEE NOTE IN SURVEY REPORT  
 DB 2246 PG 640  
 PC 4 PG 395

**Kimley»Horn**

UTILITIES BY OTHERS

NOTE: ALL PROPOSED UTILITY WORK SHOWN ON THIS SHEET WILL BE DONE BY OTHERS. NO PAYMENT WILL BE MADE TO THE CONTRACTOR FOR PROPOSED UTILITY WORK SHOWN ON THIS SHEET.

NO UTILITIES BY OTHERS THIS SHEET



68 ANNE MARIA K EDWARDS  
SEE NOTE IN SURVEY REPORT  
DB 2246 PG 640  
PC 4 PG 395

MINTON FAMILY LLC  
SEE NOTE IN SURVEY REPORT  
DB 2435 PG 1  
PC 4 PG 395  
34

MINTON FAMILY LLC  
SEE NOTE IN SURVEY REPORT  
DB 2435 PG 1  
PC 4 PG 395  
34

69 EDWARD L DICKENS  
SEE NOTE IN SURVEY REPORT  
DB 1455 PG 116  
PB 19 PG 74

EDWARD L DICKENS  
SEE NOTE IN SURVEY REPORT  
DB 1455 PG 116  
PB 19 PG 74  
69

ARC RAD=500.00'  
CHORD DIST=144.41'  
CHORD BEAR=S 64° 50' 24" W  
ARC RAD=25.00'  
CHORD DIST=35.84'  
CHORD BEAR=N 63° 23' 58" W

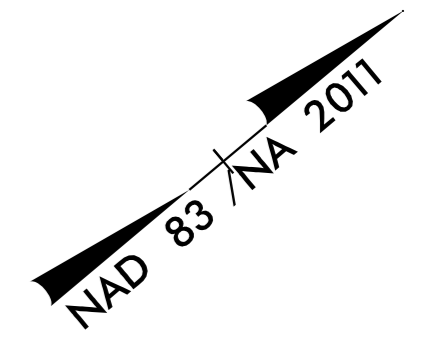
ARC RAD=50.00'  
CHORD DIST=95.12'  
CHORD BEAR=N 66° 17' 58" W

ANNE MARIA K EDWARDS  
SEE NOTE IN SURVEY REPORT  
DB 2246 PG 640  
PC 4 PG 395  
68

MINTON FAMILY LLC  
SEE NOTE IN SURVEY REPORT  
DB 2435 PG 1  
PC 4 PG 395  
34

UTILITIES BY OTHERS

NOTE:  
ALL PROPOSED UTILITY WORK SHOWN ON THIS SHEET WILL BE DONE BY OTHERS. NO PAYMENT WILL BE MADE TO THE CONTRACTOR FOR PROPOSED UTILITY WORK SHOWN ON THIS SHEET.



NO UTILITIES BY OTHERS THIS SHEET

69  
EDWARD L. DICKENS  
SEE NOTE IN SURVEY REPORT  
DB 1455 PG 116  
PB 19 PG 74

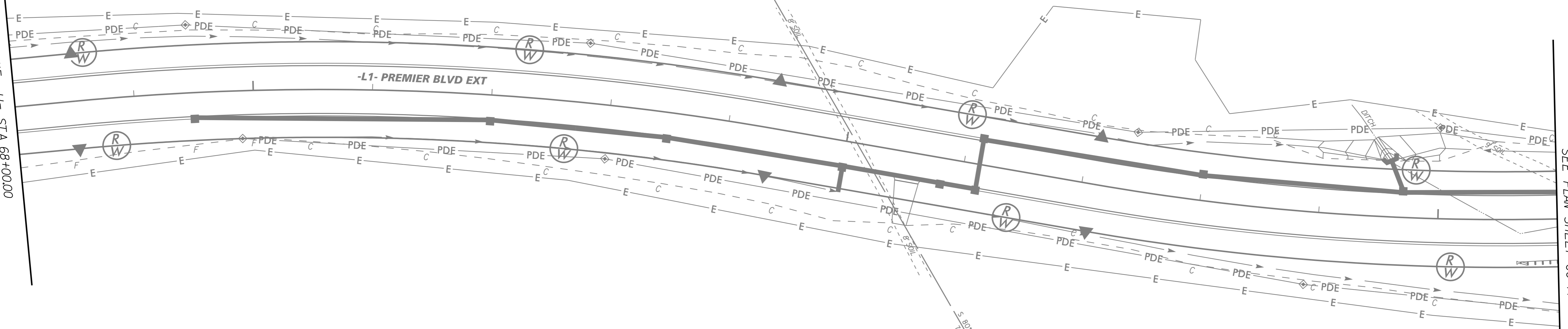
70  
EDWARD L. DICKENS  
DB 1809 PG 729

70  
EDWARD L. DICKENS  
DB 1809 PG 729

EDWARD L. DICKENS  
SEE NOTE IN SURVEY REPORT  
DB 1455 PG 116  
PB 19 PG 74  
69

MATCHLINE -L1- STA 68+00.00  
SEE PLAN SHEET U0-12

MATCHLINE -L1- STA 81+00.00  
SEE PLAN SHEET U0-14



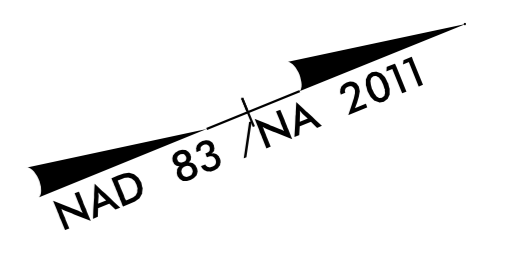
-L1- PREMIER BLVD EXT

6/12/2018 \$FILE\$

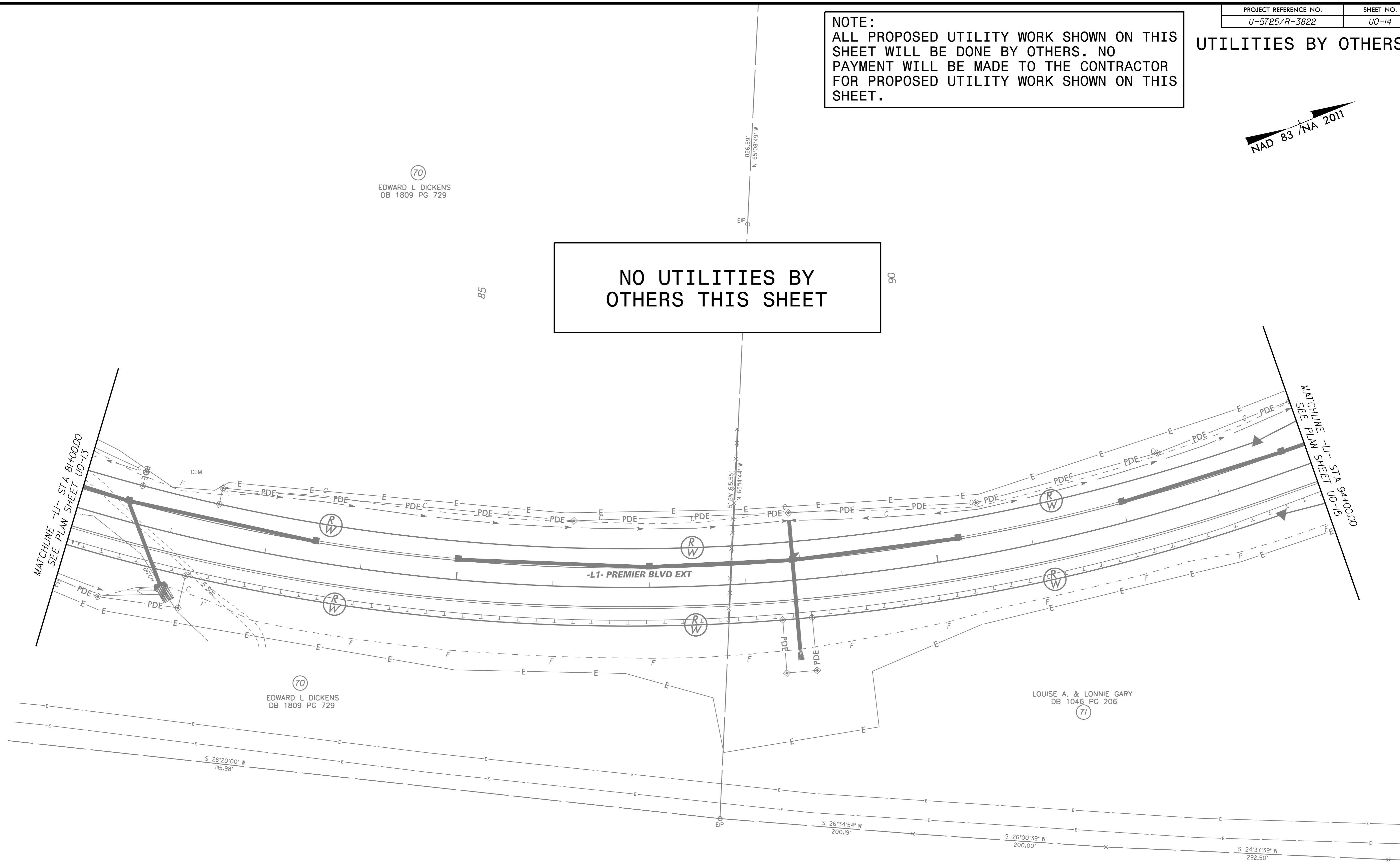


UTILITIES BY OTHERS

NOTE:  
ALL PROPOSED UTILITY WORK SHOWN ON THIS SHEET WILL BE DONE BY OTHERS. NO PAYMENT WILL BE MADE TO THE CONTRACTOR FOR PROPOSED UTILITY WORK SHOWN ON THIS SHEET.



NO UTILITIES BY OTHERS THIS SHEET



UTILITIES BY OTHERS

**NOTE:**  
 ALL PROPOSED UTILITY WORK SHOWN ON THIS SHEET WILL BE DONE BY OTHERS. NO PAYMENT WILL BE MADE TO THE CONTRACTOR FOR PROPOSED UTILITY WORK SHOWN ON THIS SHEET.

DB 2361 PG 567  
 MB 2011 PG 168

NAD 83 / NA 2011

71  
 LOUISE A. & LONNIE GARY  
 DB 1046 PG 206

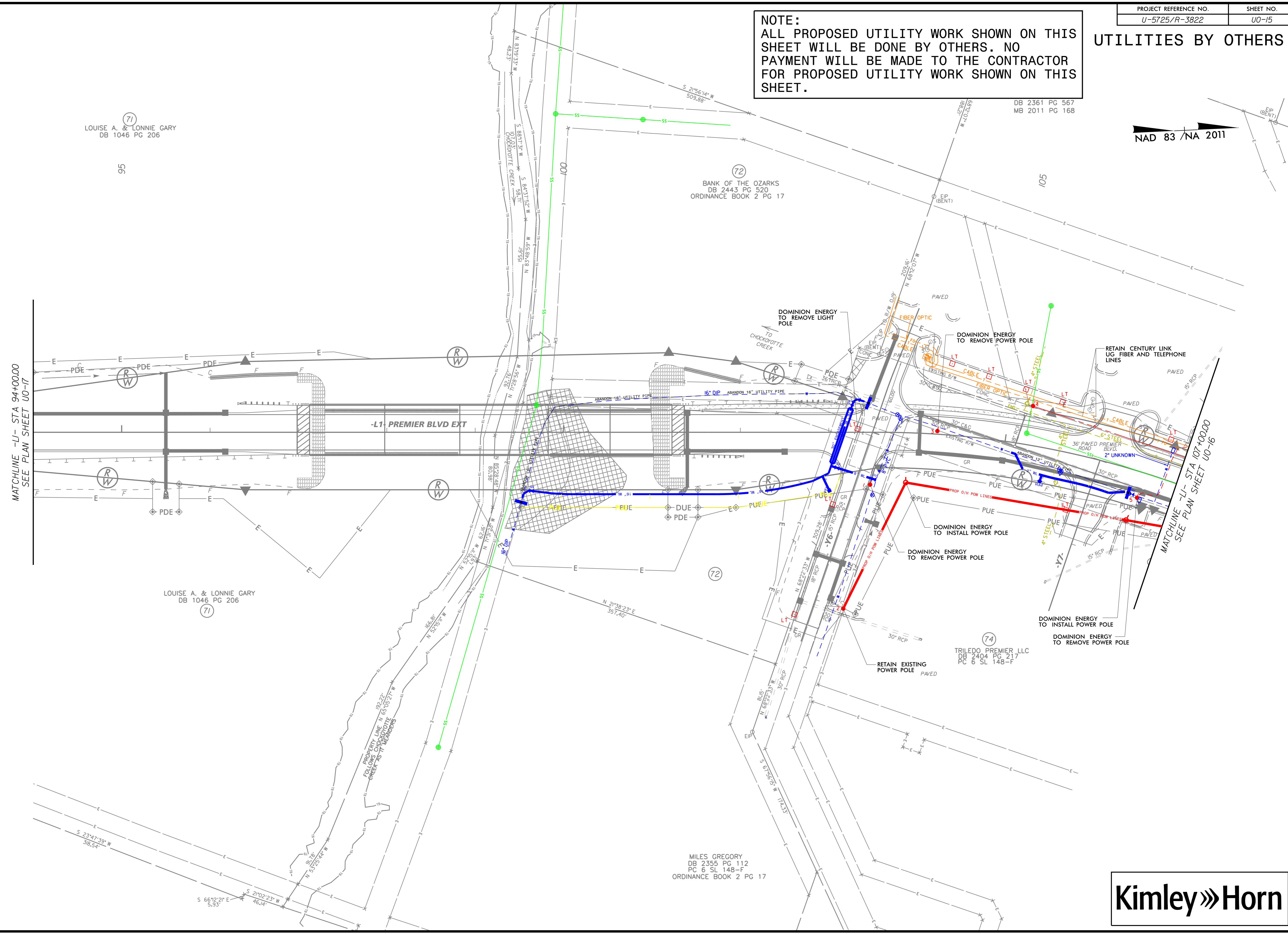
72  
 BANK OF THE OZARKS  
 DB 2443 PG 520  
 ORDINANCE BOOK 2 PG 17

74  
 TRILEDO PREMIER LLC  
 DB 2404 PG 217  
 PC 6 SL 148-F

MILES GREGORY  
 DB 2355 PG 112  
 PC 6 SL 148-F  
 ORDINANCE BOOK 2 PG 17

MATCHLINE -LI- STA 94+00.00  
 SEE PLAN SHEET U0-17

MATCHLINE -LI- STA 107+00.00  
 SEE PLAN SHEET U0-16



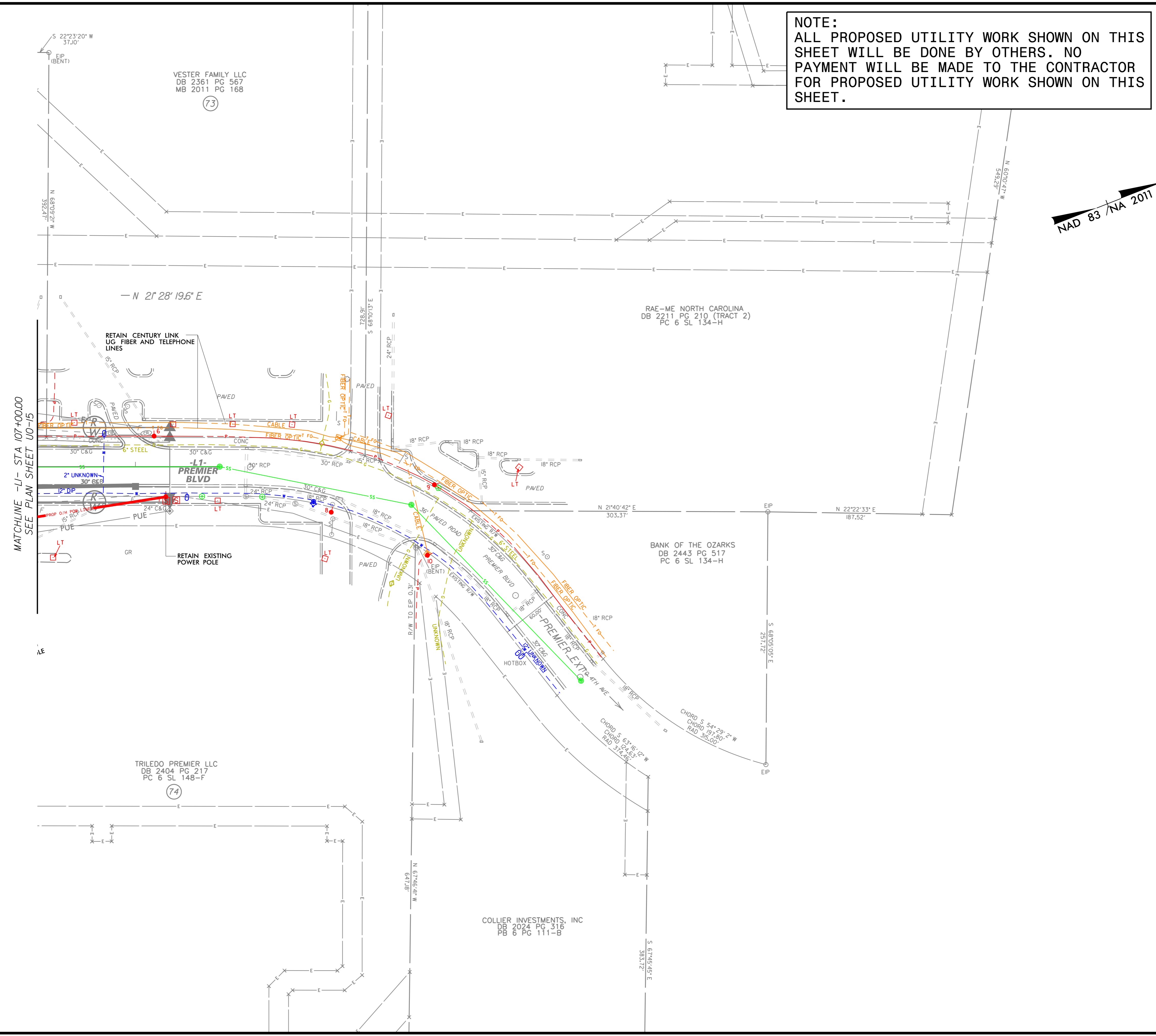
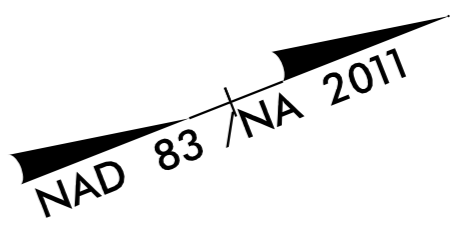
6/12/2018 \$FILE\$





UTILITIES BY OTHERS

**NOTE:**  
 ALL PROPOSED UTILITY WORK SHOWN ON THIS SHEET WILL BE DONE BY OTHERS. NO PAYMENT WILL BE MADE TO THE CONTRACTOR FOR PROPOSED UTILITY WORK SHOWN ON THIS SHEET.



MATCHLINE -L1- STA 107+00.00  
 SEE PLAN SHEET U0-15

\$FILE\$  
 6/12/2018

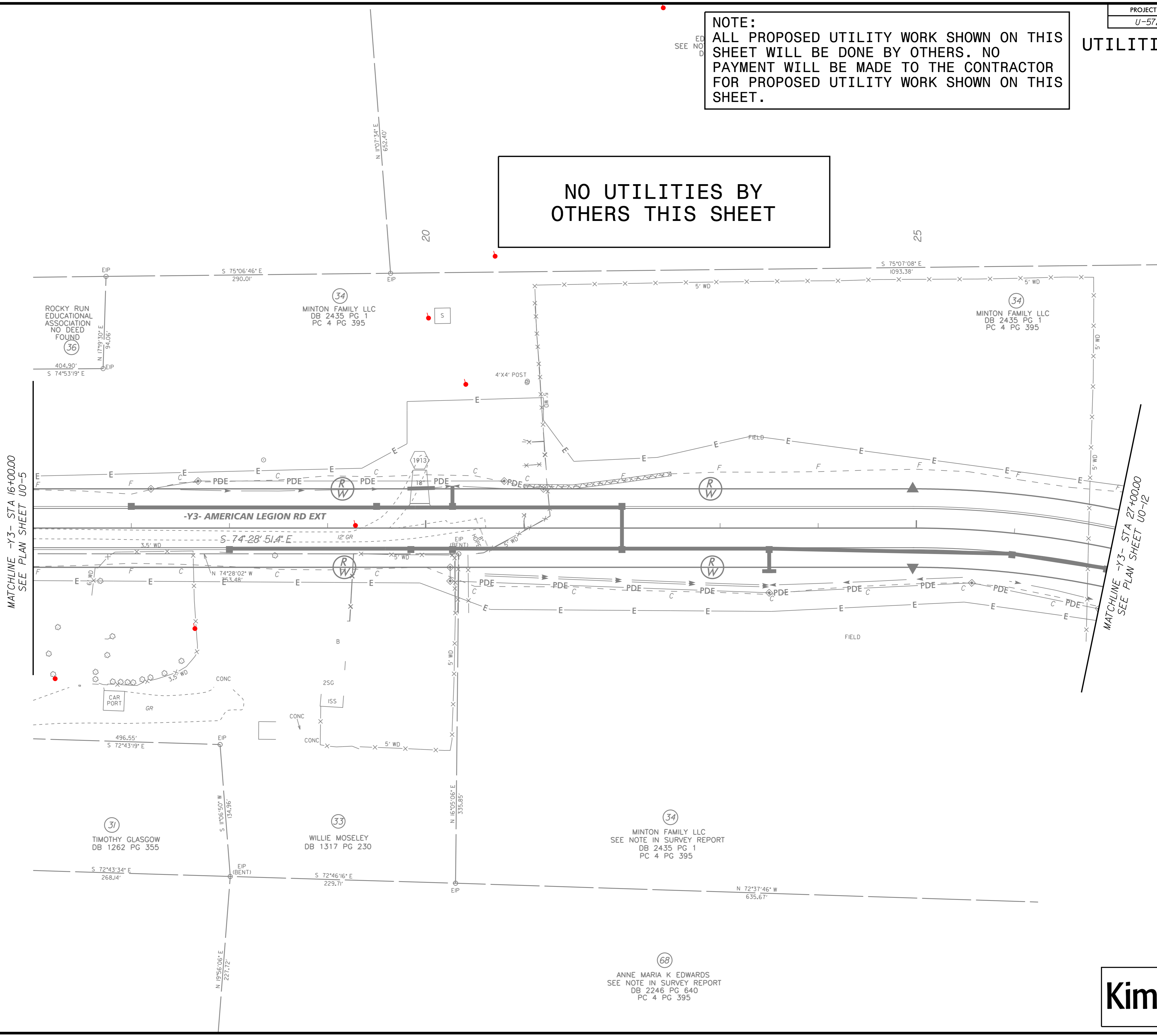


UTILITIES BY OTHERS

NOTE:  
ALL PROPOSED UTILITY WORK SHOWN ON THIS SHEET WILL BE DONE BY OTHERS. NO PAYMENT WILL BE MADE TO THE CONTRACTOR FOR PROPOSED UTILITY WORK SHOWN ON THIS SHEET.

NO UTILITIES BY OTHERS THIS SHEET

NAD 83 / NA 2011



6/12/2018 \$FILE\$