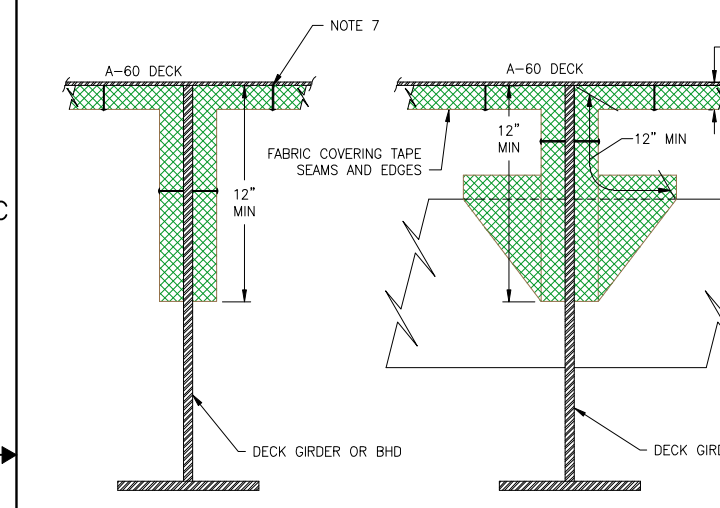
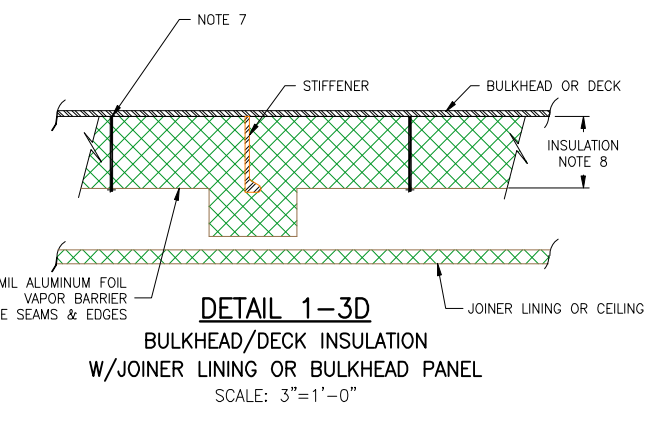
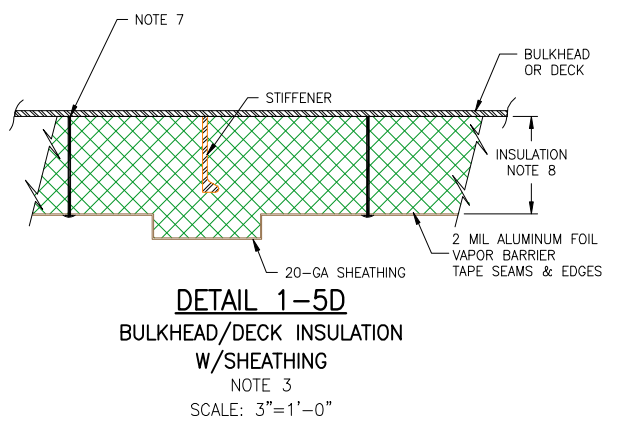
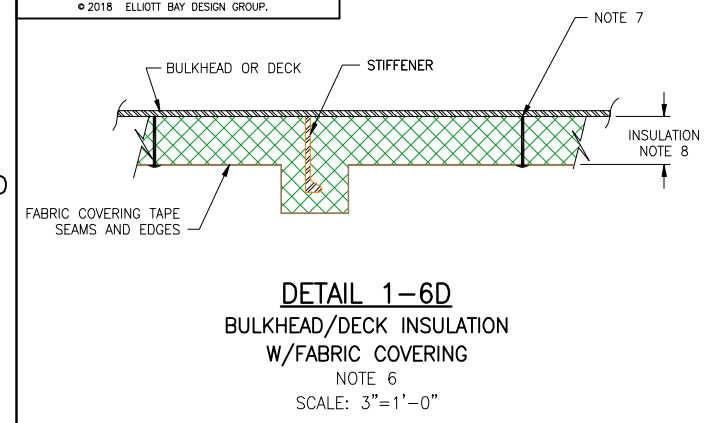


CONFIDENTIAL AND PROPRIETARY PROPERTY OF
EBDG - NC, PLLC
 MAY NOT BE USED FOR CONSTRUCTION OR PROVIDED TO
 ANY THIRD PARTIES WITHOUT PRIOR WRITTEN CONSENT.
 ©2018 ELLIOTT BAY DESIGN GROUP.



DETAIL 1-6B
 ENGINE ROOM
 DECKHEAD INSULATION
 NOTE 6
 SCALE: 1 1/2"=1'-0"

USCG DESIGNATIONS	
CONTROL STATIONS	①
STAIRWAYS AND ELEVATOR ENCLOSURES	②
CORRIDORS	③
LIFEBOAT EMBARKATION OR LOWERING STATIONS	④
STATEROOMS AND ALL PUBLIC SPACES WITH INCOMBUSTIBLE VENEERS AND TRIM AND FIRE RESISTANT FURNISHINGS	⑤
STATEROOMS AND PUBLIC SPACES OF 500 SQUARE FEET OR LESS WITH COMBUSTIBLE FURNISHINGS, AND ISOLATED STOREROOMS	⑥
PUBLIC SPACES OVER 500 SQUARE FEET WITH COMBUSTIBLE FURNISHINGS	⑦
WASHROOMS, TOILET SPACES, AND ISOLATED PANTRIES WITH INCOMBUSTIBLE FITTINGS	⑧
GALLEYS, MAIN PANTRIES, STOREROOMS, AND WORKSHOPS	⑨
MACHINERY SPACES	⑩
DRY CARGO SPACES	⑪
FUEL AND WATER TANKS AND VOIDS	⑫
OPEN DECKS AND ENCLOSED PROMENADES (NOT SAFETY AREAS)	⑬

LEGEND	
A-0 SEE NOTE 2	—
A-15	—
A-30	—
A-60	—
B-0	—
B-15	—
C	—
USCG DESIGNATION	⑫

REVISION HISTORY					
REV	ZONE	DESCRIPTION	DWN	DATE	APVD
A	2-4C	1. REVISED EOS BOUNDARY	KAJ	08/03/18	KAJ

- GENERAL NOTES**
- ALL MATERIALS AND WORKMANSHIP SHALL BE IN ACCORDANCE WITH 46 CFR SUBCHAPTER H REGULATIONS.
 - WHERE THE FIRE CONTROL DECK TYPE IS NOT INDICATED, THESE DECKS SHALL BE CONSIDERED A-0 DECKS
 - INSTALL 20-GA ALUMINUM SHEATHING OVER ALL BULKHEAD AND DECKHEAD INSULATION IN ENGINE ROOM AND UPTAKE SPACES.
 - SHIPYARD MAY PROPOSE ALTERNATIVE INSULATION METHODS, PROVIDED THEY MEET USCG REQUIREMENTS AND ARE APPROVED BY THE OWNER'S REPRESENTATIVE.
 - FIRE LOAD CALCULATIONS ARE TO BE SUBMITTED TO THE USCG IN ACCORDANCE WITH REFERENCES 3 AND 4.
 - INSTALL FABRIC COVERING OVER INSULATION IN VOIDS AND ELECTRIC DISTRIBUTION SPACES AND ALL OTHER SPACES SUBJECT TO USE AND NOT OTHERWISE COVERED BY SHEATHING OR JOINERY.
 - INSTALL WELD-ON STEEL PINS IN ACCORDANCE WITH INSULATION MANUFACTURER'S USCG APPROVED DETAILS. SECURE INSULATION WITH SPEED CLIP RETAINERS AND ALUMINUM FINISH CAPS AS APPROPRIATE FOR INSULATION AND LININGS APPLIED.
 - INSULATION DENSITY AND THICKNESS TO SUIT FIRE ZONE REQUIREMENTS IN ACCORDANCE WITH REFERENCES 3 AND 4.

- REFERENCES**
- 18026-200-832-1 TECHNICAL SPECIFICATION
 - 18026-200-101-0 PROFILES & ARRANGEMENTS
 - 46 CFR SUBCHAPTER H
 - NVIC 9-97 CH. 1



Elliott Bay Design Group
 North Carolina, PLLC

CLIENT: NORTH CAROLINA D.O.T.
 RALEIGH, NORTH CAROLINA

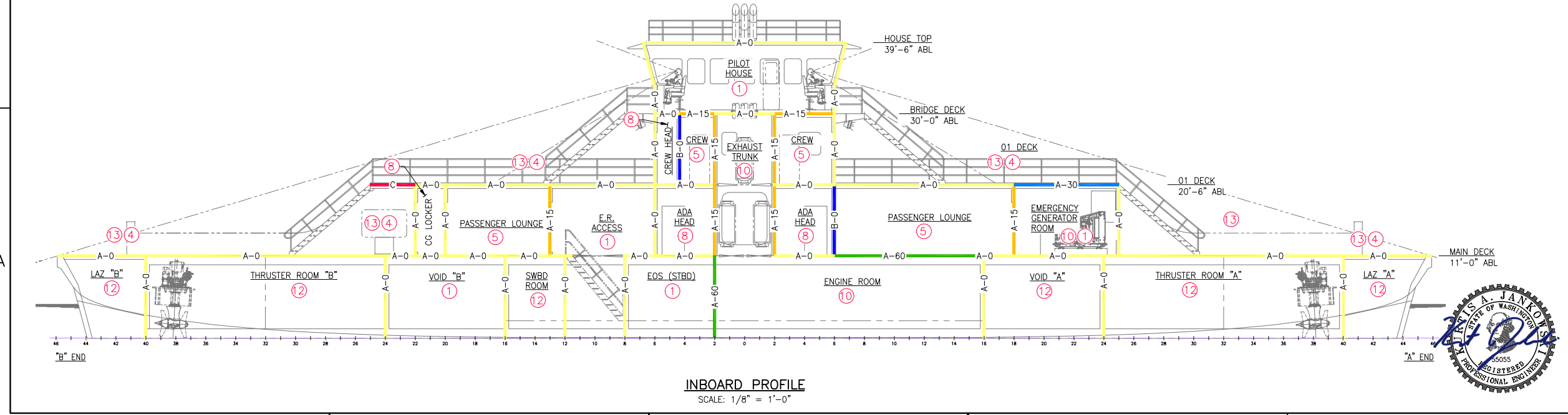
PROJECT: DOUBLE-ENDED AZIMUTH DRIVE FERRY

TITLE: FIRE ZONE PLAN

SIZE: D DWG NO.: 18026-200-101-7 REV: A

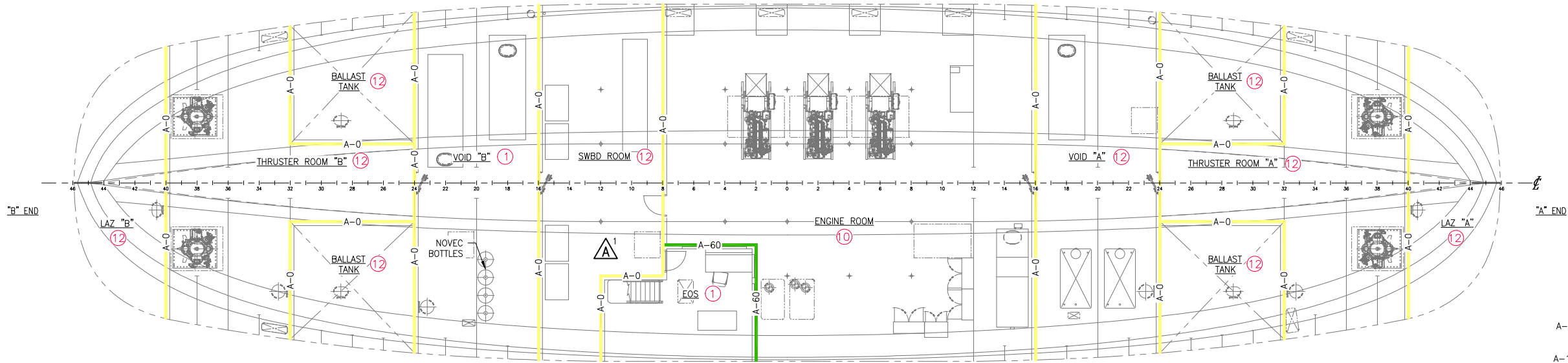
SCALE: AS NOTED FILE NAME: 18026-200-101-7- SHEET 1 OF 3

DWN: ZDL MOD: NJB CKD: NJB APVD: KAJ APVD DATE: 7/25/18



8/3/2018 2:49:58 PM

CONFIDENTIAL AND PROPRIETARY PROPERTY OF
EBDG - NC, PLLC
 MAY NOT BE USED FOR CONSTRUCTION OR PROVIDED TO
 ANY THIRD PARTIES WITHOUT PRIOR WRITTEN CONSENT.
 ©2018 ELLIOTT BAY DESIGN GROUP.

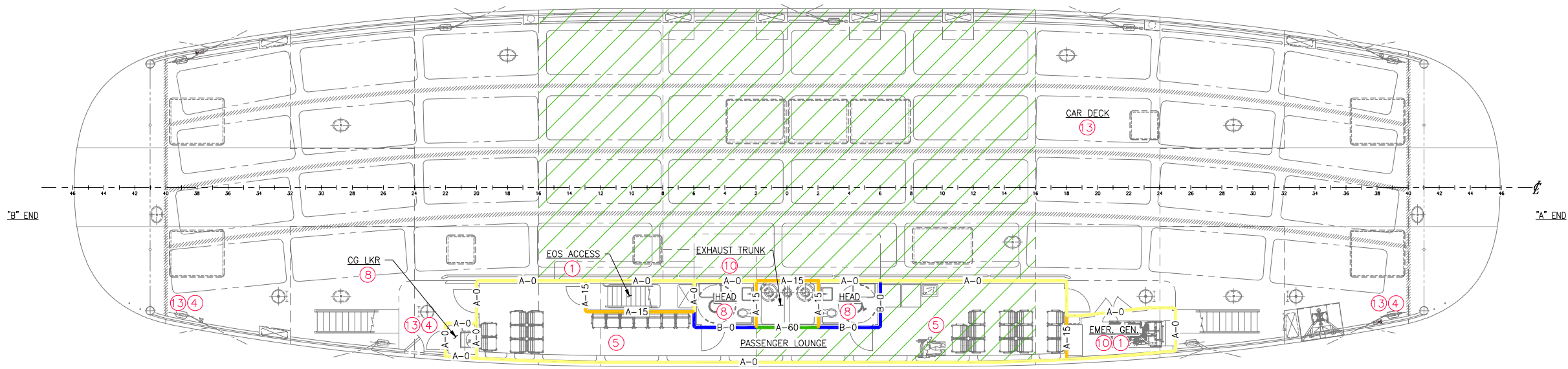


HOLD PLAN

LEGEND

- A-0 SEE NOTE 2
- A-15
- A-30
- A-60
- B-0
- B-15
- C

USCG DESIGNATION 12

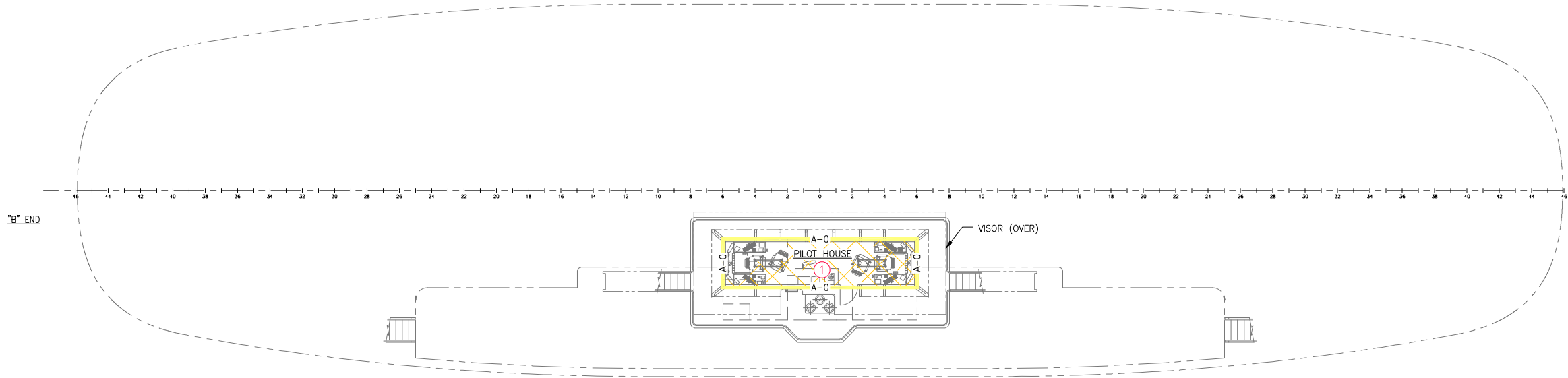


MAIN DECK PLAN



8/3/2018 2:50:07 PM

CONFIDENTIAL AND PROPRIETARY PROPERTY OF
EBDG - NC, PLLC
 MAY NOT BE USED FOR CONSTRUCTION OR PROVIDED TO
 ANY THIRD PARTIES WITHOUT PRIOR WRITTEN CONSENT.
 ©2018 ELLIOTT BAY DESIGN GROUP.

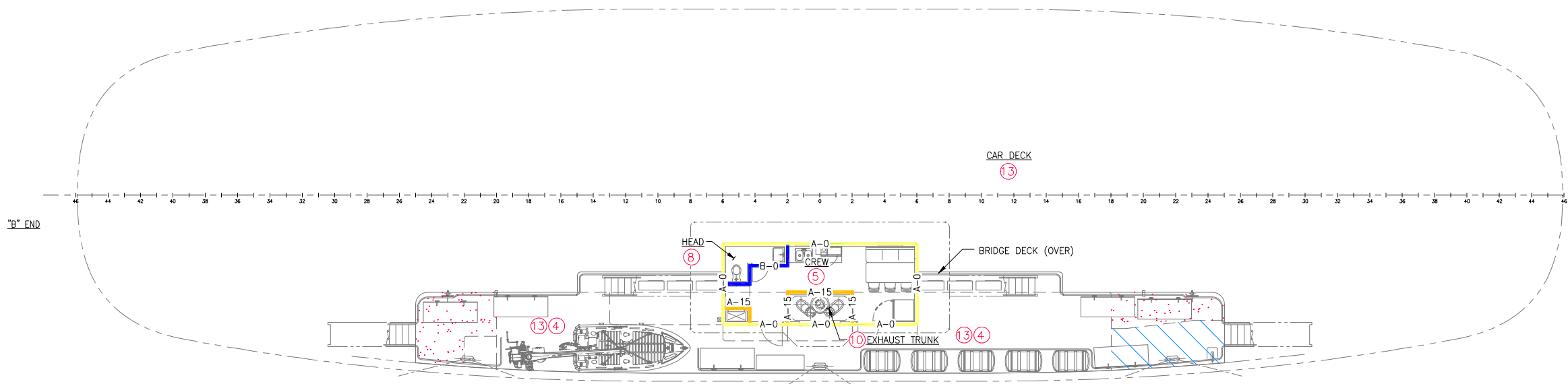


BRIDGE DECK PLAN

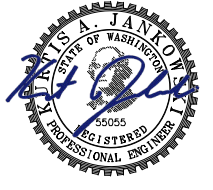
LEGEND

A-0	SEE NOTE 2		
A-15			
A-30			
A-60			
B-0			
B-15			
C			

USCG DESIGNATION 12



01 DECK PLAN



SIZE	D	DWG NO.	18026-200-101-7	REV	A
SCALE	1/8" = 1'-0"	FILE NAME	18026-200-101-7-	SHEET	3 OF 3

8/3/2018 2:50:21 PM