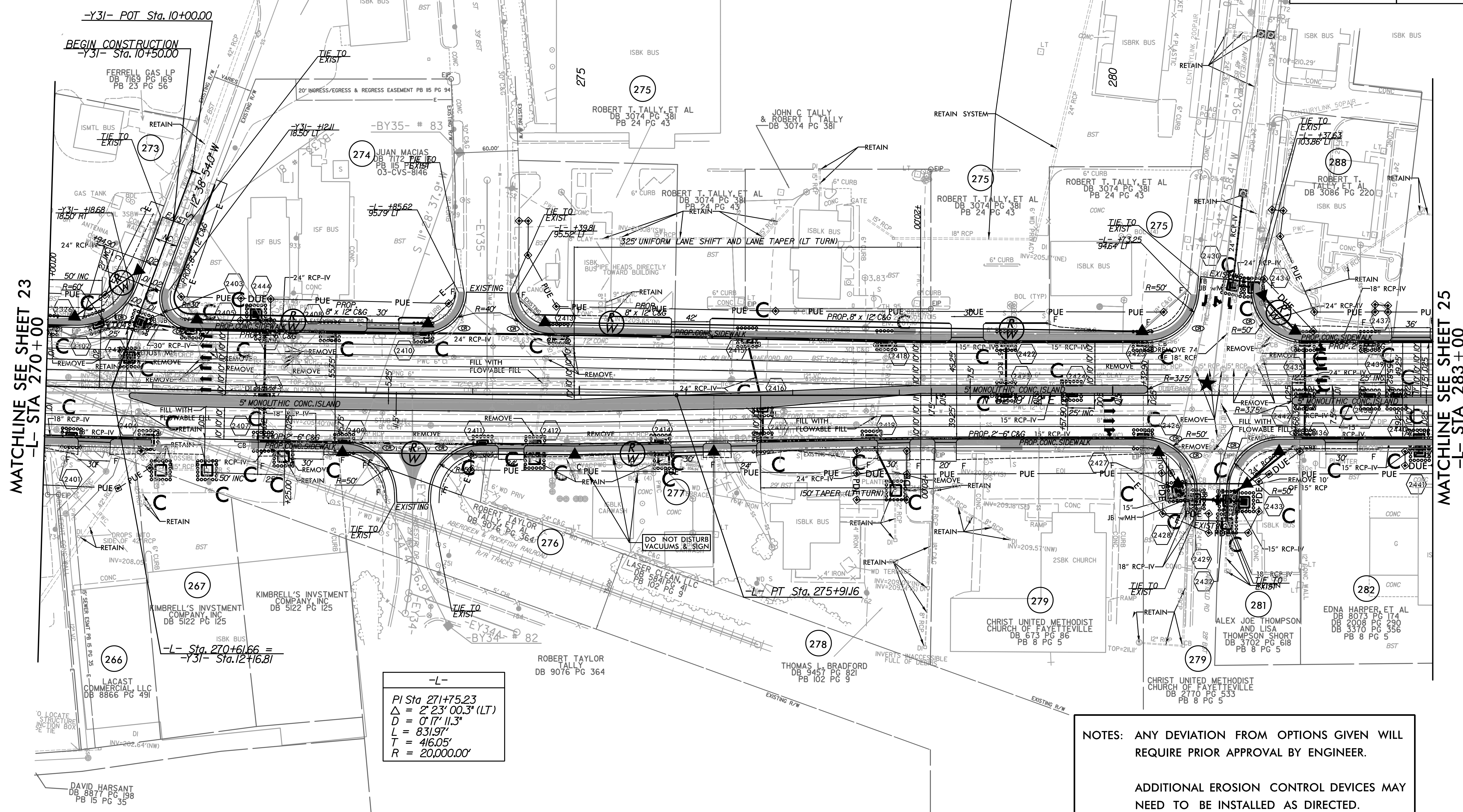


PROJECT REFERENCE NO.	SHEET NO.
U-4405	EC-61/CONST.24
RW SHEET NO.	
ROADWAY DESIGN ENGINEER	HYDRAULICS ENGINEER

NC GRID
NAD 83/NA 2011



MATCHLINE SEE SHEET 23
-L- STA 270+00

MATCHLINE SEE SHEET 25
-L- STA 283+00

-L-
 $PI\ Sta\ 271+75.23$
 $\Delta = 2^\circ 23' 00.3" (LT)$
 $D = 0' 17" 11.3"$
 $L = 831.97'$
 $T = 416.05'$
 $R = 20,000.00'$

NOTES: ANY DEVIATION FROM OPTIONS GIVEN WILL REQUIRE PRIOR APPROVAL BY ENGINEER.

ADDITIONAL EROSION CONTROL DEVICES MAY NEED TO BE INSTALLED AS DIRECTED.

INSTALL FABRIC INSERT INLET PROTECTION DEVICE IN LIEU OF ROCK INLET SEDIMENT TRAP TYPE 'C' AS DIRECTED TO AVOID PONDING OF RUNOFF IN ROADWAY OPEN TO PUBLIC TRAFFIC

NOTE: SEE SHEET 42 FOR -L- PROFILE
SEE SHEET 49 FOR -Y31- PROFILE

★ PROPOSED SIGNAL

▬ PROP CONC SIDEWALK

** A DESIGN EXCEPTION FOR LANE WIDTH IS REQUIRED FOR -L- STA. 38+95.00 TO -L- 319+95.00

REVISIONS

8/17/99
 I:\039144.AM
 R:\Environmental\Design\4405.REU.LC.psh_24_1.mxd
 10/10/10