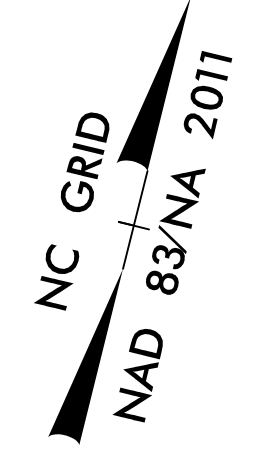


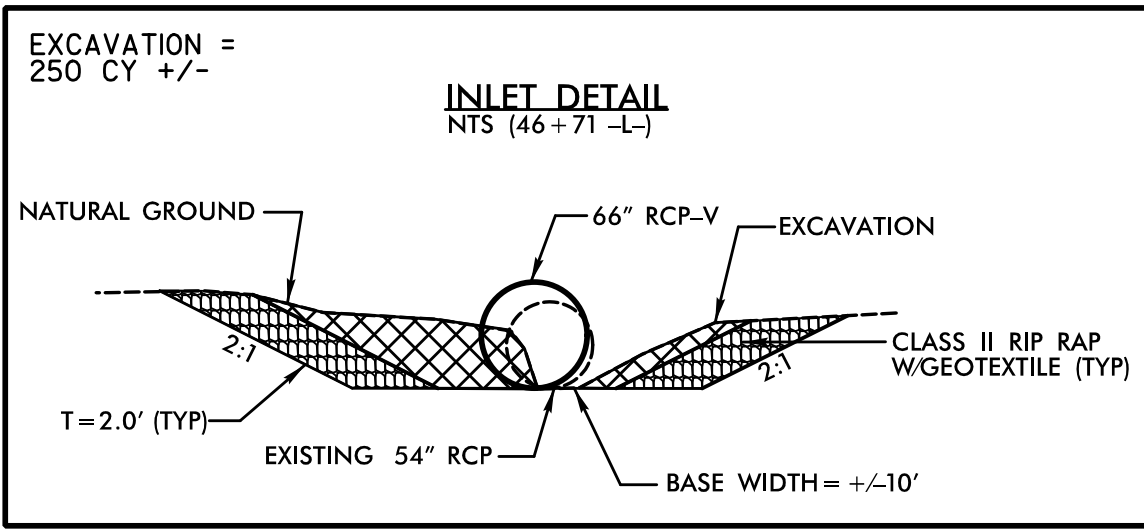
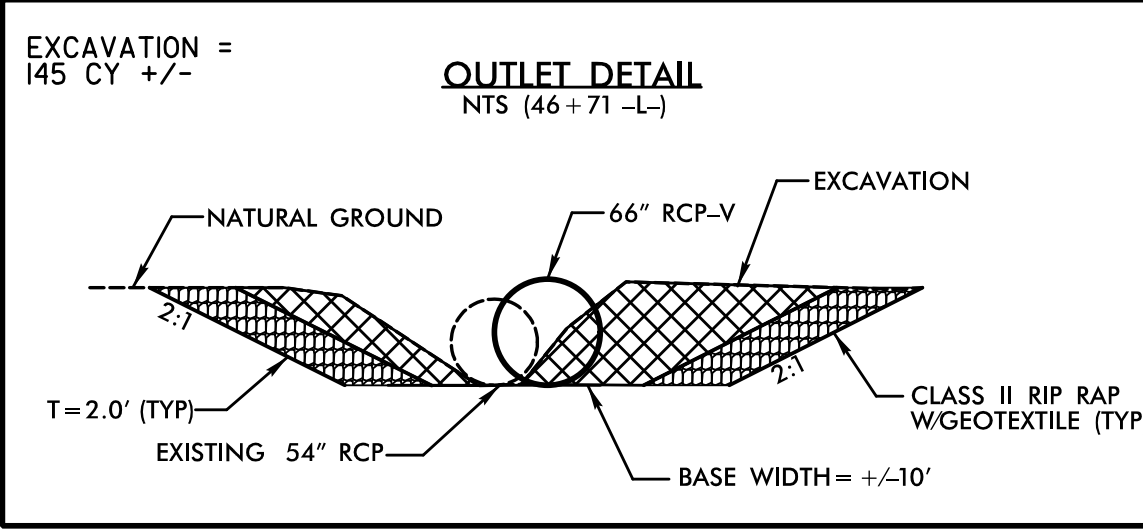
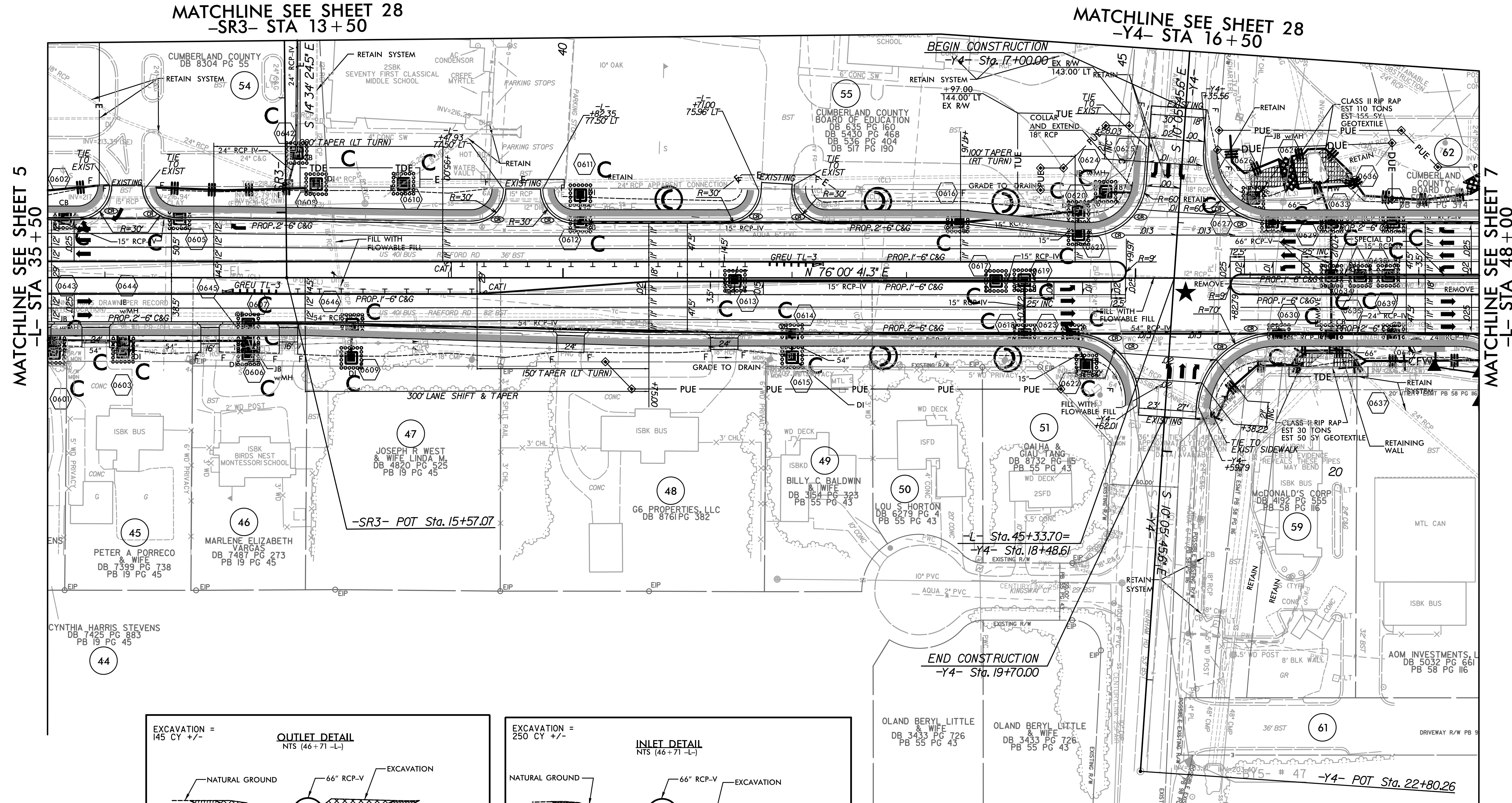
PROJECT REFERENCE NO.	SHEET NO.
U-4405	EC-43/CONST.06
RW SHEET NO.	
ROADWAY DESIGN ENGINEER	HYDRAULICS ENGINEER



NOTES: ANY DEVIATION FROM OPTIONS GIVEN WILL REQUIRE PRIOR APPROVAL BY ENGINEER.

ADDITIONAL EROSION CONTROL DEVICES MAY NEED TO BE INSTALLED AS DIRECTED.

INSTALL FABRIC INSERT INLET PROTECTION DEVICE IN LIEU OF ROCK INLET SEDIMENT TRAP TYPE 'C' AS DIRECTED TO AVOID PONDING OF RUNOFF IN ROADWAY OPEN TO PUBLIC TRAFFIC



★ PROPOSED SIGNAL

▬ PROP CONC SIDEWALK

\*\* A DESIGN EXCEPTION FOR LANE WIDTH IS REQUIRED FOR -L- STA. 38+95.00 TO -L- 319+95.00

NOTE: SEE SHEET 33&34 FOR -L- PROFILE  
SEE SHEET 46 FOR -Y4- PROFILE

8/17/99

REVISIONS

10:33:44 AM R:\Environmental\Design\4405.REU.LC.psh\_06\_11.mxd