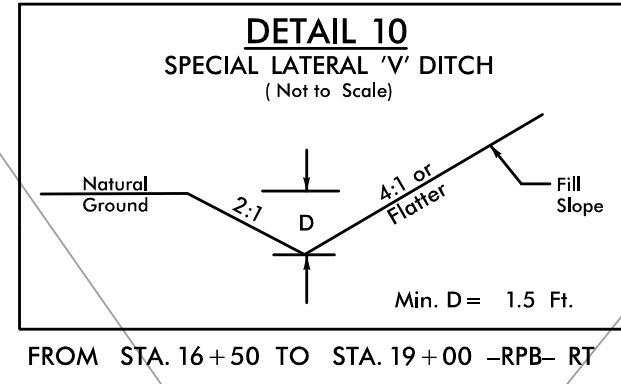


8/17/99

NOTES: ANY DEVIATION FROM OPTIONS GIVEN WILL REQUIRE PRIOR APPROVAL BY ENGINEER.

ADDITIONAL EROSION CONTROL DEVICES MAY NEED TO BE INSTALLED AS DIRECTED.

INSTALL FABRIC INSERT INLET PROTECTION DEVICE IN LIEU OF ROCK INLET SEDIMENT TRAP TYPE 'C' AS DIRECTED TO AVOID PONDING OF RUNOFF IN ROADWAY OPEN TO PUBLIC TRAFFIC



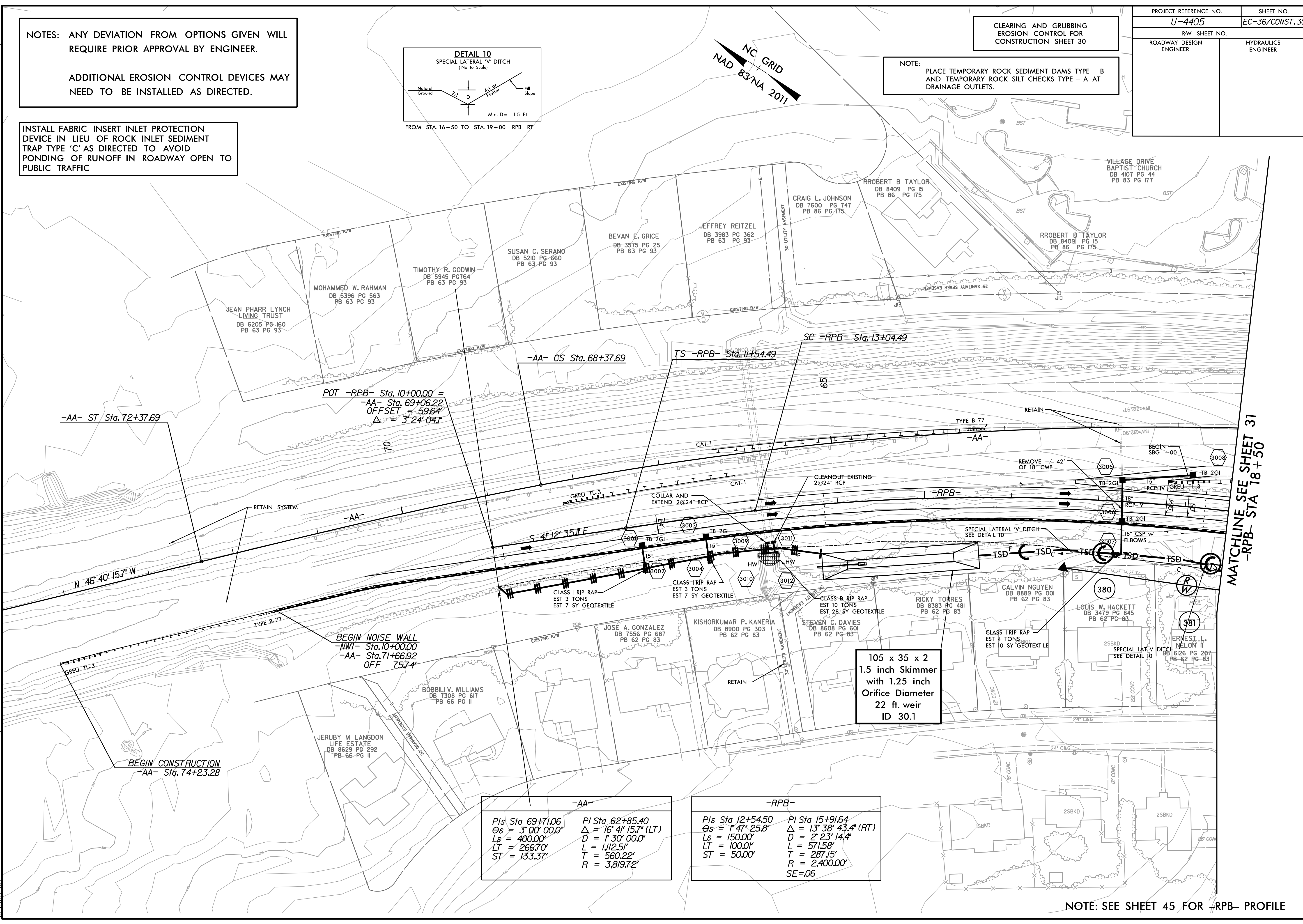
CLEARING AND GRUBBING EROSION CONTROL FOR CONSTRUCTION SHEET 30

PROJECT REFERENCE NO. U-4405	SHEET NO. EC-36/CONST.30
R/W SHEET NO.	HYDRAULICS ENGINEER
ROADWAY DESIGN ENGINEER	

NOTE: PLACE TEMPORARY ROCK SEDIMENT DAMS TYPE - B AND TEMPORARY ROCK SILT CHECKS TYPE - A AT DRAINAGE OUTLETS.

REVISIONS

MATCHLINE SEE SHEET 31 -RPB- STA 18+50



-AA-	
Pls Sta 69+71.06	Pl Sta 62+85.40
$\Theta_s = 3^{\circ}00'00.0''$	$\Delta = 16^{\circ}41'15.7''$ (LT)
$L_s = 400.00'$	$D = 1^{\circ}30'00.0''$
$LT = 266.70'$	$L = 1112.5'$
$ST = 133.37'$	$T = 560.22'$
	$R = 3,819.72'$

-RPB-	
Pls Sta 12+54.50	Pl Sta 15+91.64
$\Theta_s = 1^{\circ}47'25.8''$	$\Delta = 13^{\circ}38'43.4''$ (RT)
$L_s = 150.00'$	$D = 2^{\circ}23'14.4''$
$LT = 100.00'$	$L = 571.58'$
$ST = 50.00'$	$T = 287.15'$
	$R = 2,400.00'$
	$SE=.06$

NOTE: SEE SHEET 45 FOR -RPB- PROFILE

10:31:22 AM  
R:\Environmental\Design\4405.REU\_EC\_psh\_30\_10.dgn  
eric.gardner