

PROJECT REFERENCE NO.	SHEET NO.
U-4405	EC-23/CONST.18
RW SHEET NO.	
ROADWAY DESIGN ENGINEER	HYDRAULICS ENGINEER

NOTES: ANY DEVIATION FROM OPTIONS GIVEN WILL REQUIRE PRIOR APPROVAL BY ENGINEER.

ADDITIONAL EROSION CONTROL DEVICES MAY NEED TO BE INSTALLED AS DIRECTED.

CLEARING AND GRUBBING EROSION CONTROL FOR CONSTRUCTION SHEET 18

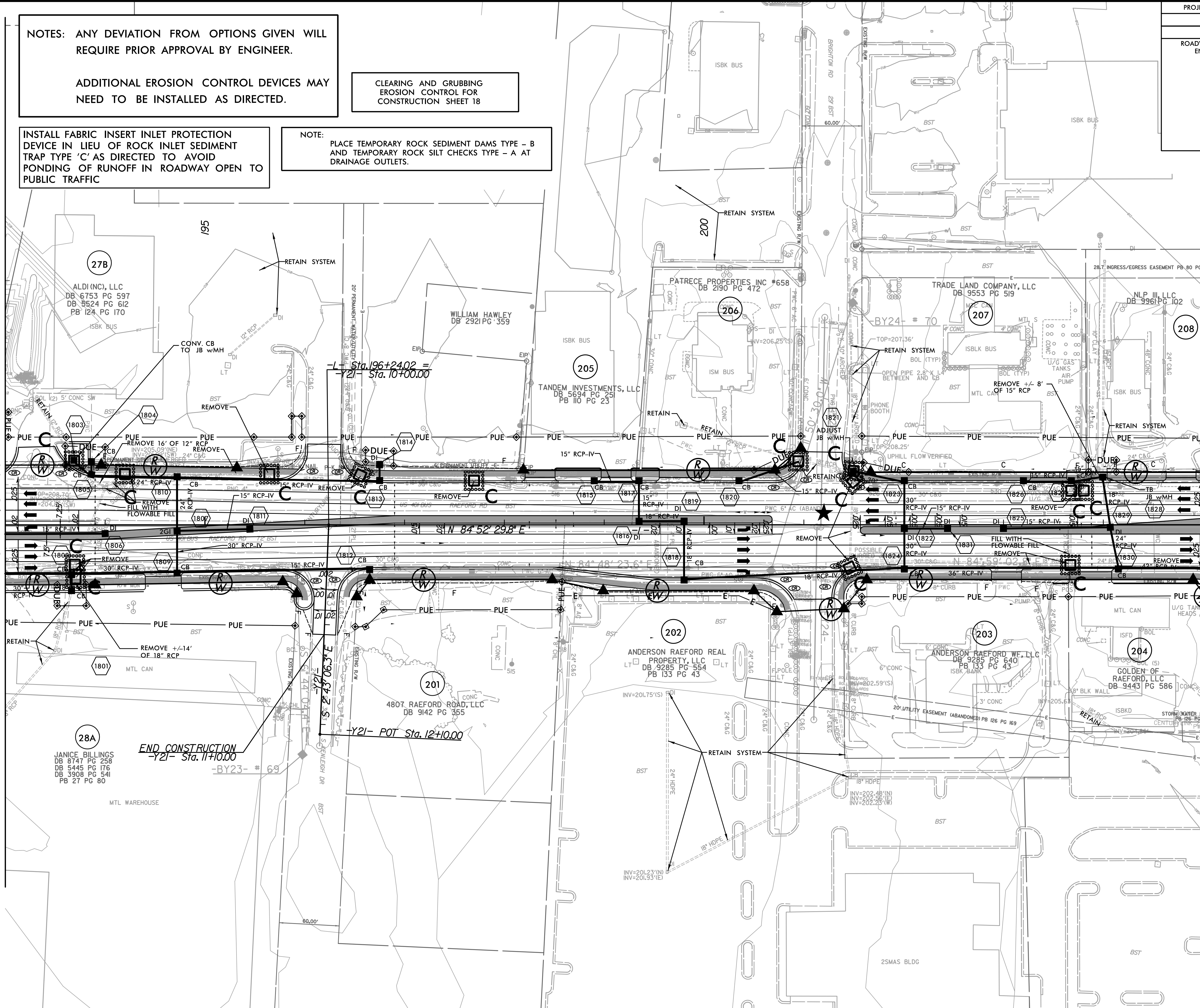
INSTALL FABRIC INSERT INLET PROTECTION DEVICE IN LIEU OF ROCK INLET SEDIMENT TRAP TYPE 'C' AS DIRECTED TO AVOID PONDING OF RUNOFF IN ROADWAY OPEN TO PUBLIC TRAFFIC

NOTE: PLACE TEMPORARY ROCK SEDIMENT DAMS TYPE - B AND TEMPORARY ROCK SILT CHECKS TYPE - A AT DRAINAGE OUTLETS.

NC GRID
NAD 83/NA 2011

MATCHLINE SEE SHEET 17
-L- STA 193+00

MATCHLINE SEE SHEET 19
-L- STA 205+00



REVISIONS

★ PROPOSED SIGNAL

■ PROP CONC SIDEWALK

** A DESIGN EXCEPTION FOR LANE WIDTH IS REQUIRED FOR -L- STA. 38+95.00 TO -L- 319+95.00

NOTE: SEE SHEET 39 FOR -L- PROFILE
SEE SHEET 48 FOR -Y21- PROFILE

8/17/99

I:\02748 AM
R:\Environmental\Design\4405_REU_EC_psh_18.dgn