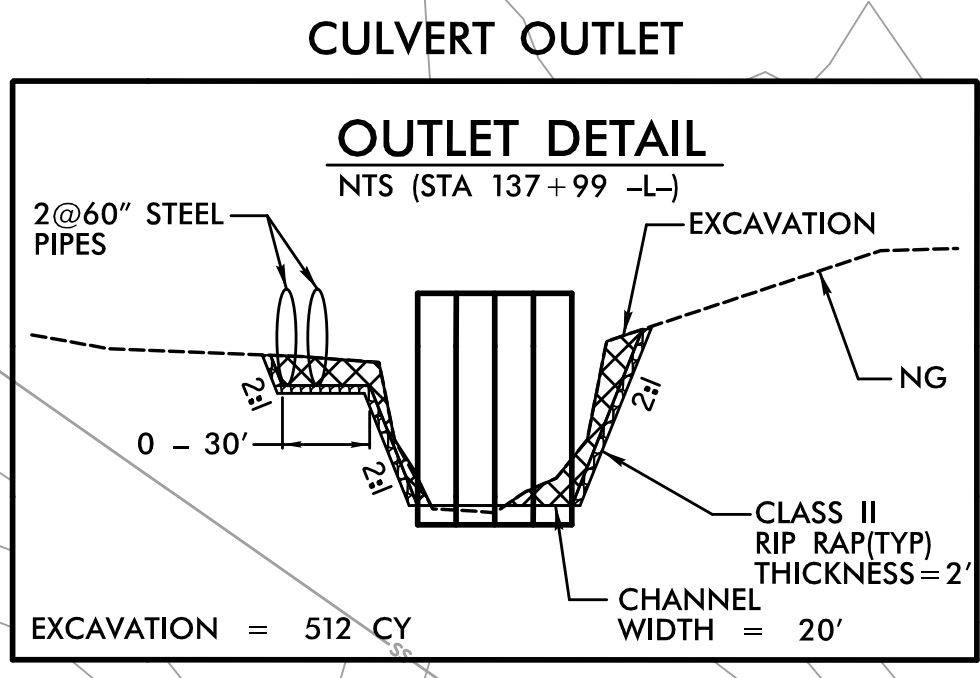
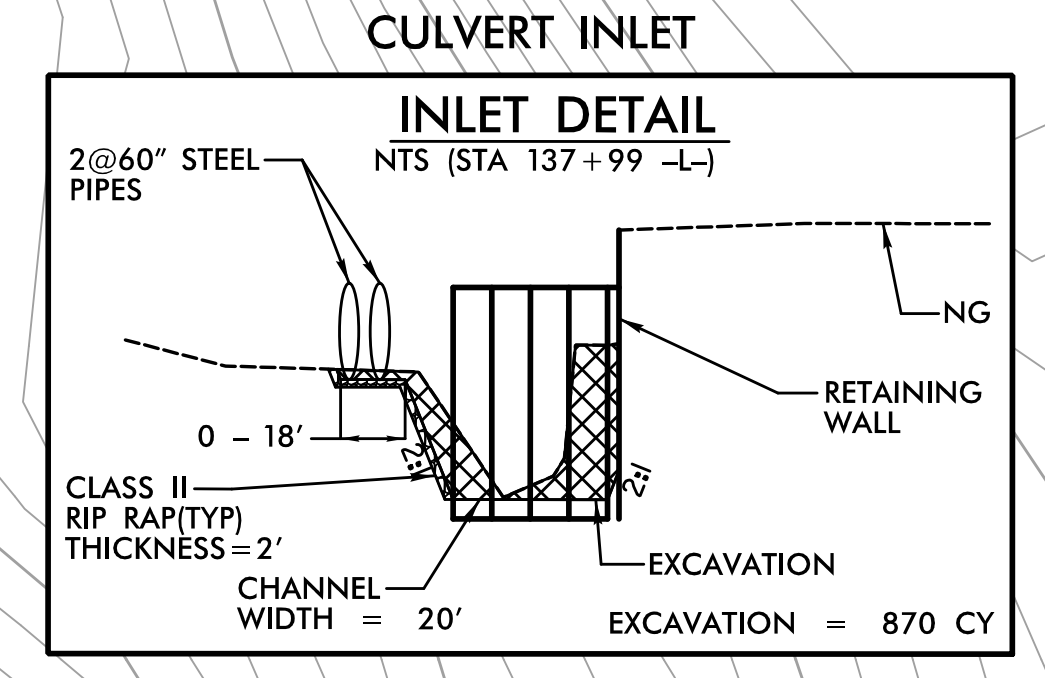


PROJECT REFERENCE NO.	SHEET NO.
U-4405	EC-16/CONST.13
RW SHEET NO.	
ROADWAY DESIGN ENGINEER	HYDRAULICS ENGINEER

-L-  
 PIs Sta 139+95.56 PI Sta 144+71.01  
 $\Delta = 1' 43' 07.9"$   $\Delta = 19' 18' 58.8" (RT)$   
 $L_s = 150.00'$   $D = 2' 17' 30.6"$   
 $L_T = 100.00'$   $L = 842.83'$   
 $ST = 50.00'$   $T = 425.45'$   
 $SE = 0.03$

CLEARING AND GRUBBING  
 EROSION CONTROL FOR  
 CONSTRUCTION SHEET 13

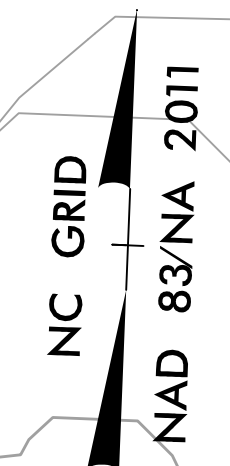


NOTES: ANY DEVIATION FROM OPTIONS GIVEN WILL REQUIRE PRIOR APPROVAL BY ENGINEER.

ADDITIONAL EROSION CONTROL DEVICES MAY NEED TO BE INSTALLED AS DIRECTED.

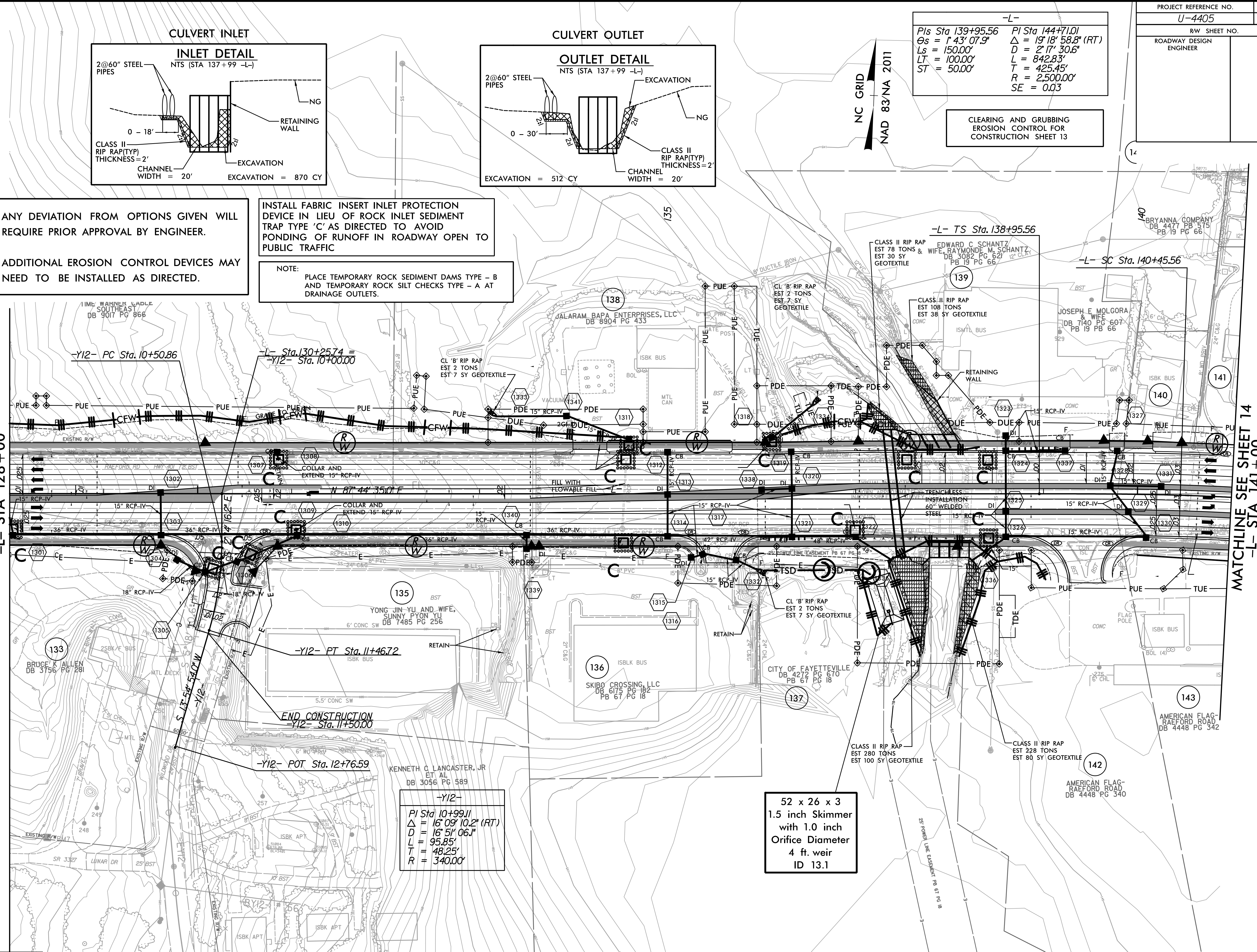
INSTALL FABRIC INSERT INLET PROTECTION DEVICE IN LIEU OF ROCK INLET SEDIMENT TRAP TYPE 'C' AS DIRECTED TO AVOID PONDING OF RUNOFF IN ROADWAY OPEN TO PUBLIC TRAFFIC

NOTE: PLACE TEMPORARY ROCK SEDIMENT DAMS TYPE - B AND TEMPORARY ROCK SILT CHECKS TYPE - A AT DRAINAGE OUTLETS.



MATCHLINE SEE SHEET 12  
 -L- STA 128+00

MATCHLINE SEE SHEET 14  
 -L- STA 141+00



-Y12-  
 PIs Sta 10+99.11  
 $\Delta = 16' 09' 10.2" (RT)$   
 $D = 16' 51' 06.1"$   
 $L = 95.85'$   
 $T = 48.25'$   
 $R = 340.00'$

52 x 26 x 3  
 1.5 inch Skimmer  
 with 1.0 inch  
 Orifice Diameter  
 4 ft. weir  
 ID 13.1

NOTE: SEE SHEET 37 FOR -L- PROFILE  
 SEE SHEET 47 FOR -Y12- PROFILE

REVISIONS

8/17/99  
 10:25:45 AM  
 R:\Environmental\Design\4405.REU.LC.psh.13.DG.dgn  
 10/25/05

\*\* A DESIGN EXCEPTION FOR LANE WIDTH IS REQUIRED FOR -L- STA. 38+95.00 TO -L- 319+95.00