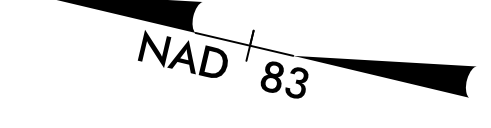


PROJECT REFERENCE NO. U-5114	SHEET NO. 7
RW SHEET NO.	HYDRAULICS ENGINEER
ROADWAY DESIGN ENGINEER	ENGINEER DANIEL C. MORRISON 11/19/2018

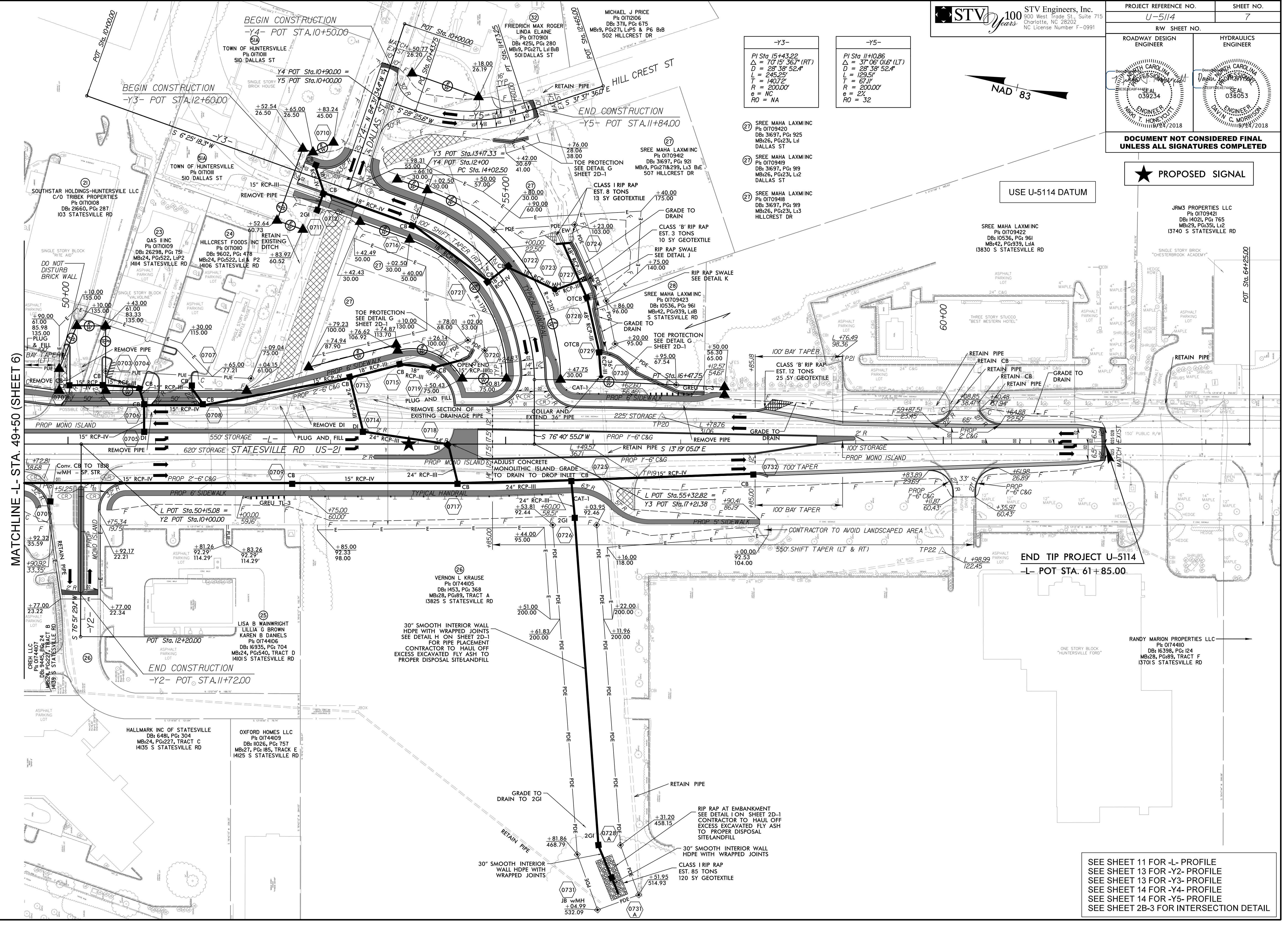
**DOCUMENT NOT CONSIDERED FINAL
UNLESS ALL SIGNATURES COMPLETED**

★ **PROPOSED SIGNAL**

USE U-5114 DATUM



<p>-Y3-</p> <p>PI Sta 15+43.22 $\Delta = 10' 15" 36.7" (RT)$ $D = 28' 38" 52.4"$ $L = 245.23'$ $T = 140.72'$ $R = 200.00'$ $e = NC$ $RO = NA$</p>	<p>-Y5-</p> <p>PI Sta 11+0.86 $\Delta = 37' 06" 01.6" (LT)$ $D = 28' 38" 52.4"$ $L = 129.51'$ $T = 67.11'$ $R = 200.00'$ $e = 2'$ $RO = 32$</p>
---	---



MATCHLINE -L- STA. 49+50 (SHEET 6)

END TIP PROJECT U-5114
-L- POT STA. 61+85.00

SEE SHEET 11 FOR -L- PROFILE
 SEE SHEET 13 FOR -Y2- PROFILE
 SEE SHEET 13 FOR -Y3- PROFILE
 SEE SHEET 14 FOR -Y4- PROFILE
 SEE SHEET 14 FOR -Y5- PROFILE
 SEE SHEET 2B-3 FOR INTERSECTION DETAIL