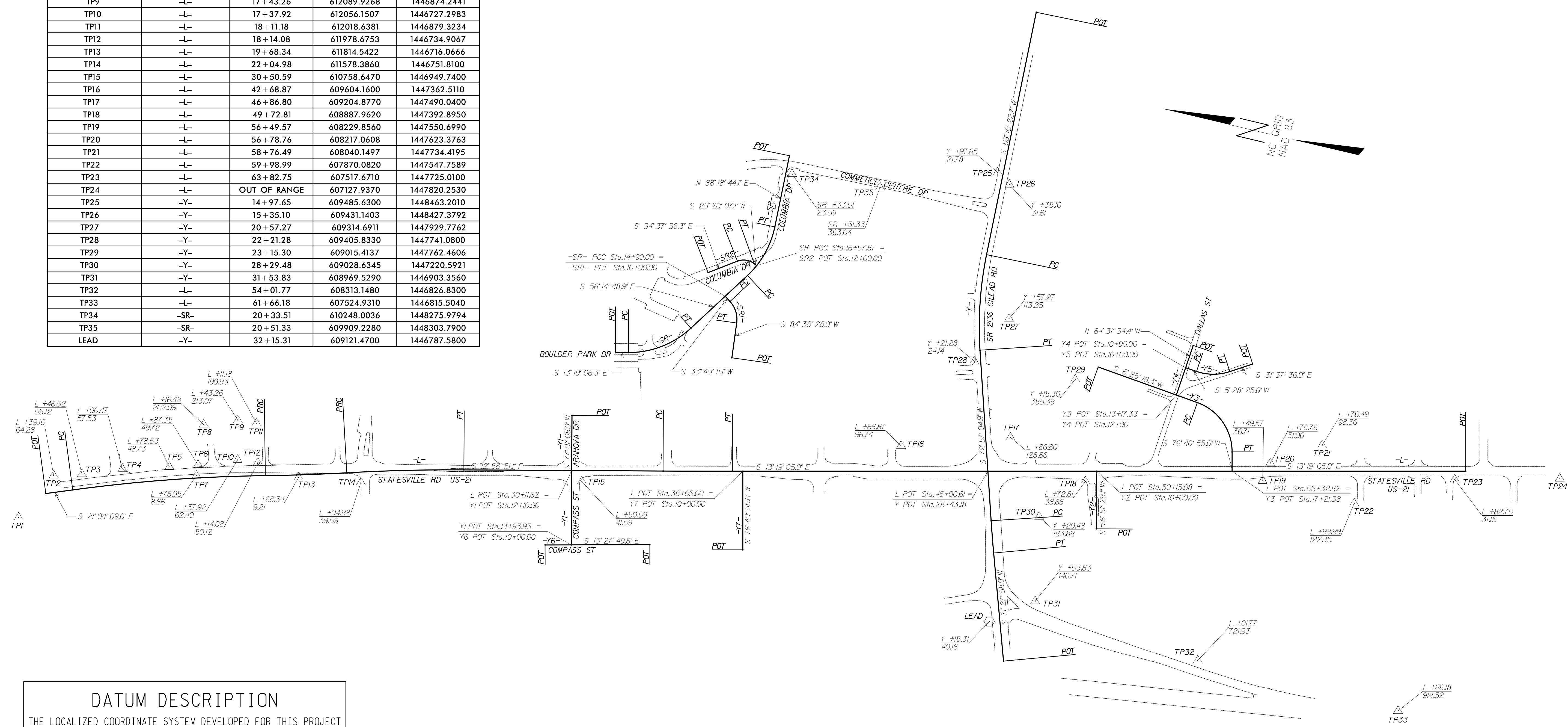


# FINAL SURVEY CONTROL SHEET U-5114

## WITH PROPOSED CENTERLINE ALIGNMENTS

POINT NO.	LINE	STATION	NORTH	EAST
TP1	-L-	OUT OF RANGE	612819.3987	1446320.6795
TP2	-L-	10+39.16	612725.9860	1446507.3090
TP3	-L-	10+46.52	612622.0983	1446537.3572
TP4	-L-	13+00.47	612476.8384	1446592.5986
TP5	-L-	14+78.53	612303.5879	1446640.8099
TP6	-L-	15+87.35	612198.9584	1446673.8215
TP7	-L-	15+78.95	612195.3793	1446632.0610
TP8	-L-	16+16.48	612213.2839	1446828.4090
TP9	-L-	17+43.26	612089.9268	1446874.2441
TP10	-L-	17+37.92	612056.1507	1446727.2983
TP11	-L-	18+11.18	612018.6381	1446879.3234
TP12	-L-	18+14.08	611978.6753	1446734.9067
TP13	-L-	19+68.34	611814.5422	1446716.0666
TP14	-L-	22+04.98	611578.3860	1446751.8100
TP15	-L-	30+50.59	610758.6470	1446949.7400
TP16	-L-	42+68.87	609604.1600	1447362.5110
TP17	-L-	46+86.80	609204.8770	1447490.0400
TP18	-L-	49+72.81	608887.9620	1447392.8950
TP19	-L-	56+49.57	608229.8560	1447550.6990
TP20	-L-	56+78.76	608217.0608	1447623.3763
TP21	-L-	58+76.49	608040.1497	1447734.4195
TP22	-L-	59+98.99	607870.0820	1447547.7589
TP23	-L-	63+82.75	607517.6710	1447725.0100
TP24	-L-	OUT OF RANGE	607127.9370	1447820.2530
TP25	-Y-	14+97.65	609485.6300	1448463.2010
TP26	-Y-	15+35.10	609431.1403	1448427.3792
TP27	-Y-	20+57.27	609314.6911	1447929.7762
TP28	-Y-	22+21.28	609405.8330	1447741.0800
TP29	-Y-	23+15.30	609015.4137	1447762.4606
TP30	-Y-	28+29.48	609028.6345	1447220.5921
TP31	-Y-	31+53.83	608969.5290	1446903.3560
TP32	-L-	54+01.77	608313.1480	1446826.8300
TP33	-L-	61+66.18	607524.9310	1446815.5040
TP34	-SR-	20+33.51	610248.0036	1448275.9794
TP35	-SR-	20+51.33	609909.2280	1448303.7900
LEAD	-Y-	32+15.31	609121.4700	1446787.5800



**DATUM DESCRIPTION**

THE LOCALIZED COORDINATE SYSTEM DEVELOPED FOR THIS PROJECT IS THE NAD 83, NC STATE PLANE COORDINATES, LOCALIZED FROM NCGS MONUMENT "LEAD" HAVING A NORTHING: 609121.47(ft) EASTING: 1446787.58(ft) VERTICAL ELEVATION: 773.50(ft)

THE AVERAGE COMBINED GRID FACTOR USED ON THIS PROJECT (GROUND TO GRID) IS: 0.9998442

THE LOCALIZED HORIZONTAL GROUND DISTANCE FROM "LEAD" TO -L- STATION 26+40.00 IS N 03° 05' 21.785" E 2049.595(ft)

ALL LINEAR DISTANCES ARE LOCALIZED HORIZONTAL DISTANCES THE VERTICAL DATUM IS BASED ON NAVD 88 (GEOID 03)

NOTE: DRAWING NOT TO SCALE

5/2/2018 10:00:00 AM \\proj\shu\U-5114\_rdy\_psh01C-1.dgn