

**This electronic collection of documents is provided  
for the convenience of the user  
and is Not a Certified Document –**

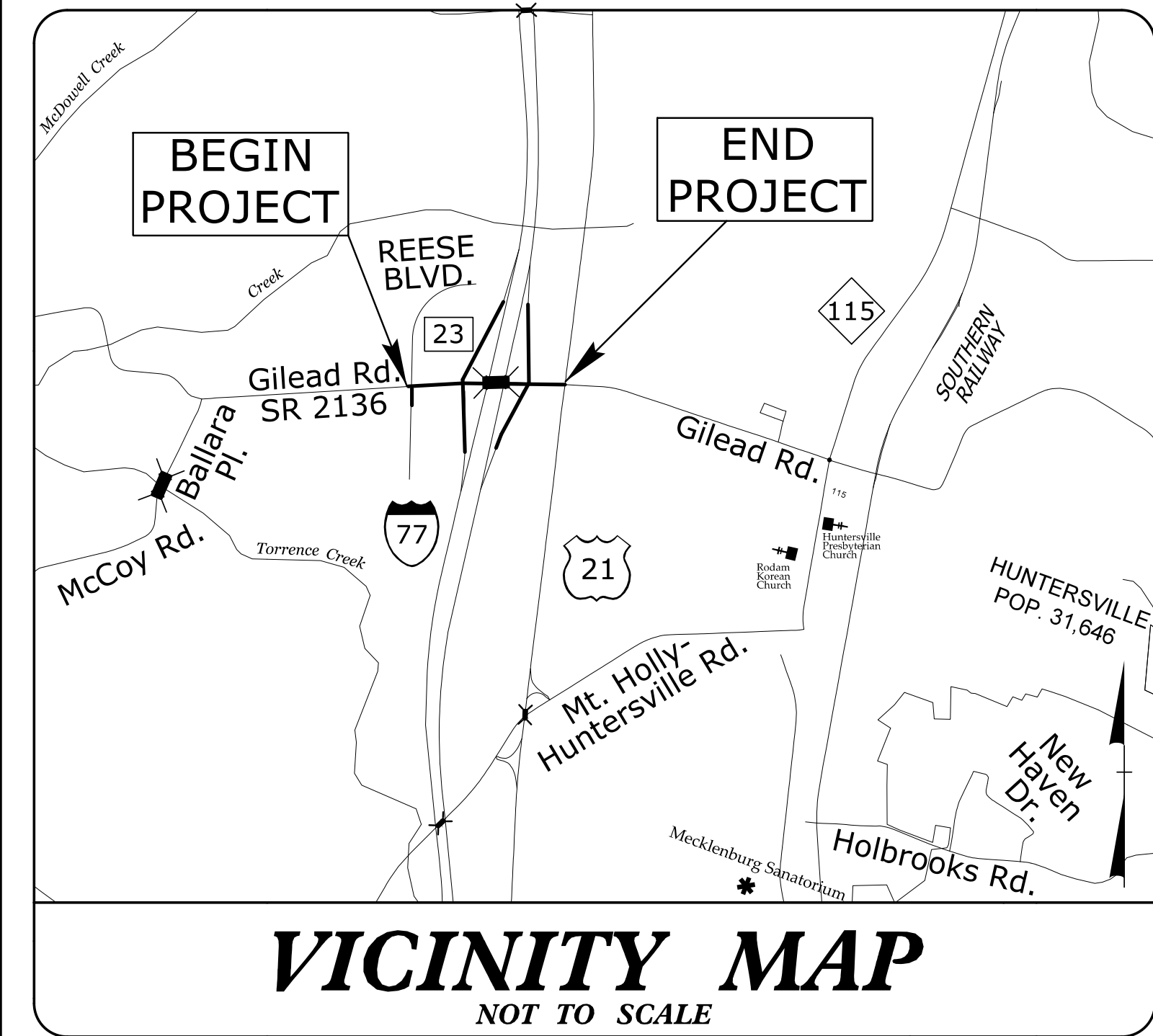
**The documents contained herein were originally issued  
and sealed by the individuals whose names and license  
numbers appear on each page, on the dates appearing  
with their signature on that page.**

**This file or an individual page  
shall not be considered a certified document.**

**TIP PROJECT: I-5714**

T.I.P. NO.	SHEET NO.
I-5714	UO-1

NOTE:  
 ALL UTILITY WORK SHOWN ON THIS SHEET IS DONE BY OTHERS.  
 NO PAYMENT WILL BE MADE TO THE CONTRACTOR FOR UTILITY WORK SHOWN ON THIS SHEET.



STATE OF NORTH CAROLINA  
 DIVISION OF HIGHWAYS  
**UTILITIES BY OTHERS PLANS  
 MECKLENBURG COUNTY**

LOCATION: BRIDGE NO.356 ON SR 2136 (GILEAD ROAD)  
 OVER I-77 (EXIT 23)  
 TYPE OF WORK: UTILITY BY OTHERS  
 COORDINATION PLANS

END CONSTRUCTION  
 -Y10- STA. 11+14.47

END CONSTRUCTION  
 -RPB- STA. 21+50.44

END CONSTRUCTION  
 -RPA- STA. 23+61.84

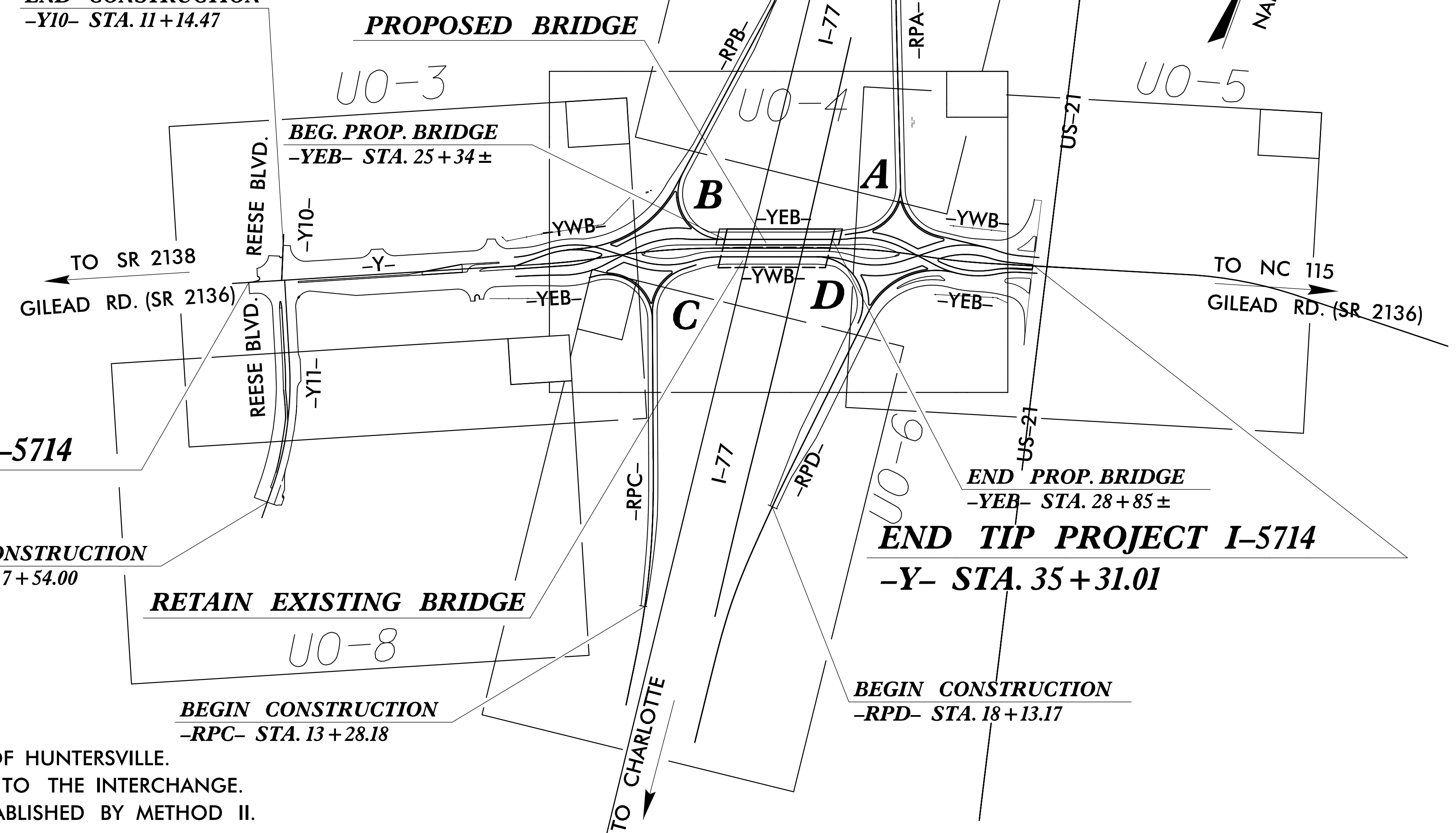
BEGIN TIP PROJECT I-5714  
 -Y- STA. 9+53.65

BEGIN CONSTRUCTION  
 -Y11- STA. 7+54.00

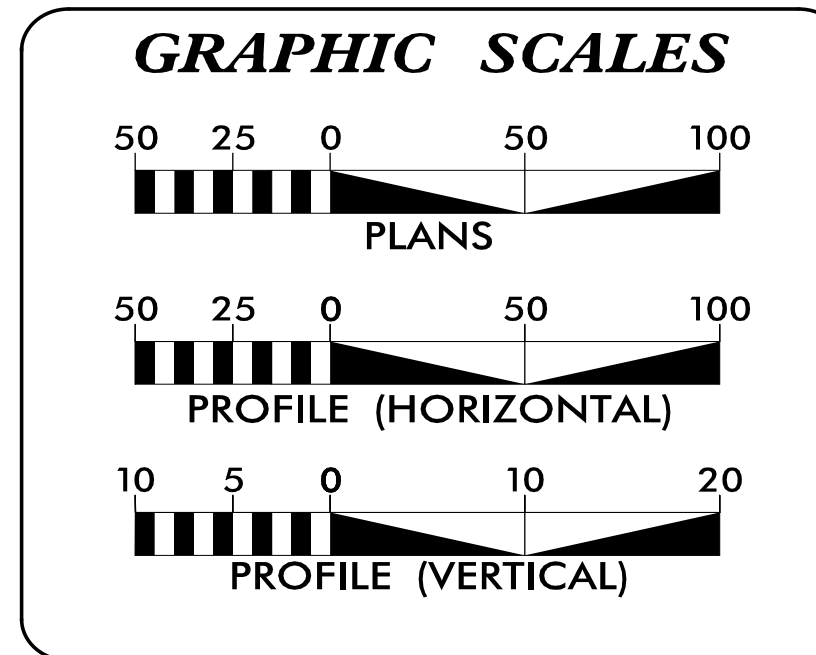
END PROP. BRIDGE  
 -YEB- STA. 28+85±  
**END TIP PROJECT I-5714**  
 -Y- STA. 35+31.01

BEGIN CONSTRUCTION  
 -RPC- STA. 13+28.18

BEGIN CONSTRUCTION  
 -RPD- STA. 18+13.17



THIS PROJECT IS WITHIN THE MUNICIPAL BOUNDARIES OF THE TOWN OF HUNTERVILLE.  
 THIS IS A CONTROLLED-ACCESS PROJECT WITH ACCESS BEING LIMITED TO THE INTERCHANGE.  
 CLEARING ON THIS PROJECT SHALL BE PERFORMED TO THE LIMITS ESTABLISHED BY METHOD II.



**INDEX OF SHEETS**

SHEET NO.:	DESCRIPTION:
UO-1	TITLE SHEET
UO-2	LEGEND SHEET
UO-3 THRU UO-8	UBO PLAN SHEETS

- UTILITY OWNERS WITH CONFLICTS**
- (A) TELECOMMUNICATIONS - AT&T
  - (B) CATV - CHARTER / SPECTRUM
  - (C) GAS - PIEDMONT NATURAL GAS
  - (D) POWER - DUKE ENERGY (DISTRIBUTION)
  - (E) POWER - ELECTRICITIES (DISTRIBUTION)
  - (F) TELECOMMUNICATIONS - DUKE NET (SPECTRUM)
  - (G) TELECOMMUNICATIONS - LEVEL 3 (CENTURY LINK)

PREPARED IN THE OFFICE OF:

STV Engineers, Inc.  
 900 West Trade St., Suite 715  
 Charlotte, NC 28202  
 NC License Number F-0991

Oriana Hernandez, PE	UTILITY PROJECT MANAGER
Oriana Hernandez, PE	PROJECT UTILITY COORDINATOR
Matthew Cox	PROJECT UTILITY QA/QC

**DIVISION OF HIGHWAYS  
 UTILITIES UNIT**  
 1555 MAIL SERVICES CENTER  
 RALEIGH, NC 27699-1555  
 PHONE (919) 707-6690  
 FAX (919) 250-4151

Michael Bright	UTILITIES REGIONAL ENGINEER
Michael Bright	UTILITIES ENGINEER
Amy Dupree	UTILITIES AREA COORDINATOR
Greg Sealy	UTILITIES COORDINATOR

# STATE OF NORTH CAROLINA, DIVISION OF HIGHWAYS

## CONVENTIONAL PLAN SHEET SYMBOLS

*Note: Not to Scale*      \*S.U.E. = *Subsurface Utility Engineering*

### UTILITIES BY OTHERS

#### BOUNDARIES AND PROPERTY:

State Line	-----
County Line	-----
Township Line	-----
City Line	-----
Reservation Line	-----
Property Line	-----
Existing Iron Pin	○ EIP
Property Corner	→
Property Monument	□ ECM
Parcel/Sequence Number	⑫3
Existing Fence Line	-x-x-x-
Proposed Woven Wire Fence	○
Proposed Chain Link Fence	□
Proposed Barbed Wire Fence	◇
Existing Wetland Boundary	--- WLB ---
Proposed Wetland Boundary	WLB
Existing Endangered Animal Boundary	--- EAB ---
Existing Endangered Plant Boundary	--- EPB ---
Existing Historic Property Boundary	--- HPB ---

Known Contamination Area: Soil	☠
Potential Contamination Area: Soil	☠
Known Contamination Area: Water	☠
Potential Contamination Area: Water	☠
Contaminated Site: Known or Potential	☠ ?

#### BUILDINGS AND OTHER CULTURE:

Gas Pump Vent or U/G Tank Cap	○
Sign	○ S
Well	○ W
Small Mine	✂
Foundation	□
Area Outline	□
Cemetery	⊕
Building	▭
School	▭
Church	⊕
Dam	▭

#### HYDROLOGY:

Stream or Body of Water	~~~~~
Hydro, Pool or Reservoir	▭
Jurisdictional Stream	--- JS ---
Buffer Zone 1	--- BZ 1 ---
Buffer Zone 2	--- BZ 2 ---
Flow Arrow	→
Disappearing Stream	→
Spring	○
Wetland	▭
Proposed Lateral, Tail, Head Ditch	▭
False Sump	▽

#### RAILROADS:

Standard Gauge	-----
RR Signal Milepost	○ MILEPOST 35
Switch	□ SWITCH
RR Abandoned	-----
RR Dismantled	-----

#### RIGHT OF WAY:

Baseline Control Point	◆
Existing Right of Way Marker	△
Existing Right of Way Line	-----
Proposed Right of Way Line	--- (R/W) ---
Proposed Right of Way Line with Iron Pin and Cap Marker	--- (R/W) ▲ ---
Proposed Right of Way Line with Concrete or Granite R/W Marker	--- (R/W) ▴ ---
Proposed Control of Access Line with Concrete C/A Marker	--- (C/A) ---
Existing Control of Access	--- (C/A) ---
Proposed Control of Access	--- (C/A) ---
Existing Easement Line	--- E ---
Proposed Temporary Construction Easement	E
Proposed Temporary Drainage Easement	TDE
Proposed Permanent Drainage Easement	PDE
Proposed Permanent Drainage / Utility Easement	DUE
Proposed Permanent Utility Easement	PUE
Proposed Temporary Utility Easement	TUE
Proposed Aerial Utility Easement	AUE
Proposed Permanent Easement with Iron Pin and Cap Marker	◆

#### ROADS AND RELATED FEATURES:

Existing Edge of Pavement	-----
Existing Curb	-----
Proposed Slope Stakes Cut	--- C ---
Proposed Slope Stakes Fill	--- F ---
Proposed Curb Ramp	--- (CR) ---
Existing Metal Guardrail	-----
Proposed Guardrail	-----
Existing Cable Guiderail	-----
Proposed Cable Guiderail	-----
Equality Symbol	⊕
Pavement Removal	▨

#### VEGETATION:

Single Tree	☼
Single Shrub	☼
Hedge	~~~~~
Woods Line	~~~~~

Orchard	☼ ☼ ☼ ☼
Vineyard	▭ Vineyard

#### EXISTING STRUCTURES:

MAJOR:	
Bridge, Tunnel or Box Culvert	▭ CONC
Bridge Wing Wall, Head Wall and End Wall	--- (CONC WW) ---
MINOR:	
Head and End Wall	--- (CONC HW) ---
Pipe Culvert	-----
Footbridge	-----
Drainage Box: Catch Basin, DI or JB	□ CB
Paved Ditch Gutter	-----
Storm Sewer Manhole	○ S
Storm Sewer	--- S ---

#### UTILITIES:

POWER:	
Existing Power Pole	●
Proposed Power Pole	○
Existing Joint Use Pole	●
Proposed Joint Use Pole	○
Power Manhole	⊕
Power Line Tower	⊕
Power Transformer	⊕
U/G Power Cable Hand Hole	○
H-Frame Pole	●
U/G Power Line LOS B (S.U.E.*)	--- P ---
U/G Power Line LOS C (S.U.E.*)	--- P ---
U/G Power Line LOS D (S.U.E.*)	--- P ---

#### TELEPHONE:

Existing Telephone Pole	●
Proposed Telephone Pole	○
Telephone Manhole	⊕
Telephone Pedestal	⊕
Telephone Cell Tower	⊕
U/G Telephone Cable Hand Hole	○
U/G Telephone Cable LOS B (S.U.E.*)	--- T ---
U/G Telephone Cable LOS C (S.U.E.*)	--- T ---
U/G Telephone Cable LOS D (S.U.E.*)	--- T ---
U/G Telephone Conduit LOS B (S.U.E.*)	--- TC ---
U/G Telephone Conduit LOS C (S.U.E.*)	--- TC ---
U/G Telephone Conduit LOS D (S.U.E.*)	--- TC ---
U/G Fiber Optics Cable LOS B (S.U.E.*)	--- T FO ---
U/G Fiber Optics Cable LOS C (S.U.E.*)	--- T FO ---
U/G Fiber Optics Cable LOS D (S.U.E.*)	--- T FO ---

#### WATER:

Water Manhole	⊕
Water Meter	○
Water Valve	⊗
Water Hydrant	⊕
U/G Water Line LOS B (S.U.E.*)	--- W ---
U/G Water Line LOS C (S.U.E.*)	--- W ---
U/G Water Line LOS D (S.U.E.*)	--- W ---
Above Ground Water Line	--- A/G Water ---

#### TV:

TV Pedestal	⊕
TV Tower	⊗
U/G TV Cable Hand Hole	○
U/G TV Cable LOS B (S.U.E.*)	--- TV ---
U/G TV Cable LOS C (S.U.E.*)	--- TV ---
U/G TV Cable LOS D (S.U.E.*)	--- TV ---
U/G Fiber Optic Cable LOS B (S.U.E.*)	--- TV FO ---
U/G Fiber Optic Cable LOS C (S.U.E.*)	--- TV FO ---
U/G Fiber Optic Cable LOS D (S.U.E.*)	--- TV FO ---

#### GAS:

Gas Valve	◇
Gas Meter	⊕
U/G Gas Line LOS B (S.U.E.*)	--- G ---
U/G Gas Line LOS C (S.U.E.*)	--- G ---
U/G Gas Line LOS D (S.U.E.*)	--- G ---
Above Ground Gas Line	--- A/G Gas ---

#### SANITARY SEWER:

Sanitary Sewer Manhole	⊕
Sanitary Sewer Cleanout	⊕
U/G Sanitary Sewer Line	--- SS ---
Above Ground Sanitary Sewer	--- A/G Sanitary Sewer ---
SS Forced Main Line LOS B (S.U.E.*)	--- FSS ---
SS Forced Main Line LOS C (S.U.E.*)	--- FSS ---
SS Forced Main Line LOS D (S.U.E.*)	--- FSS ---

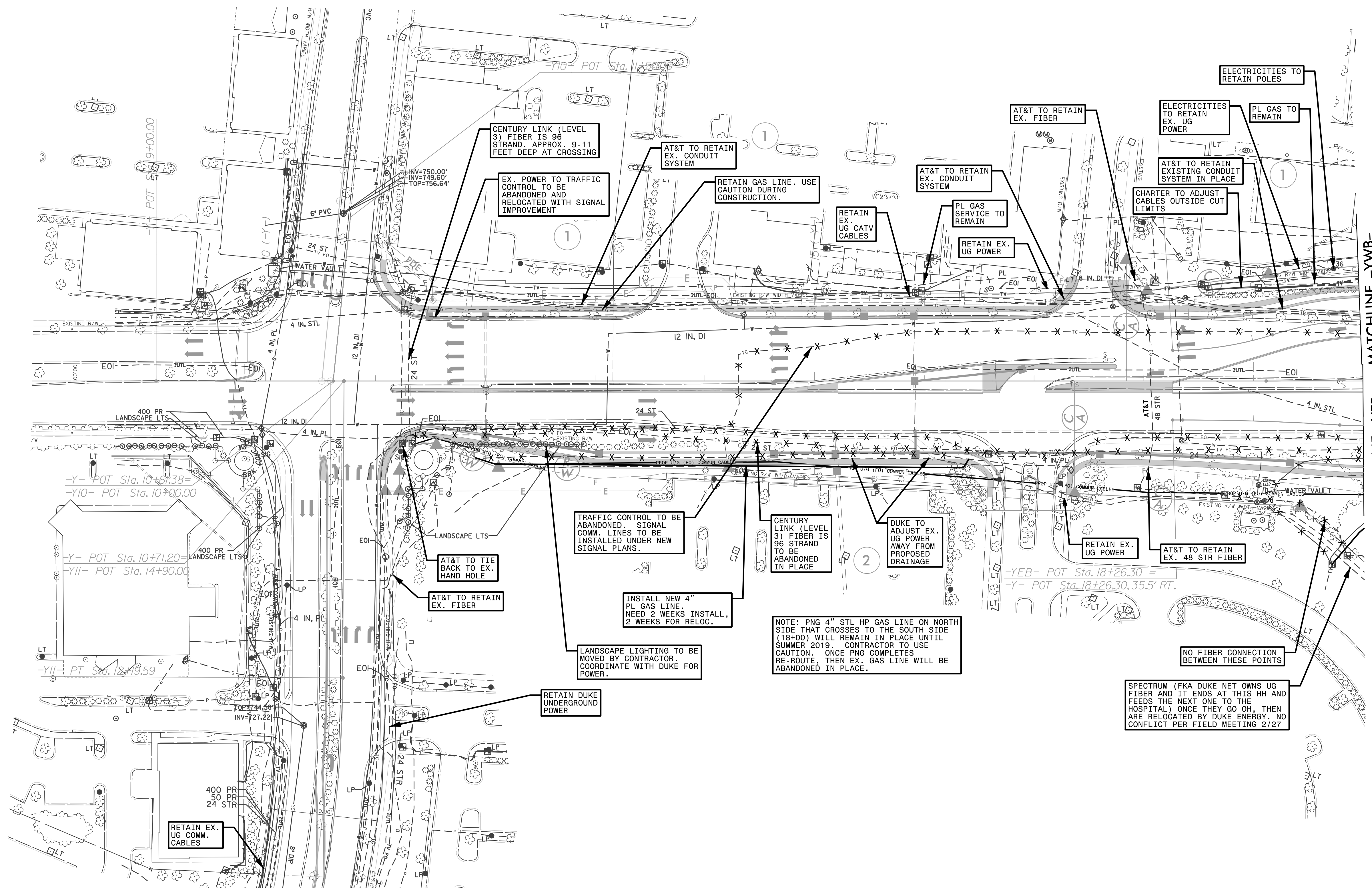
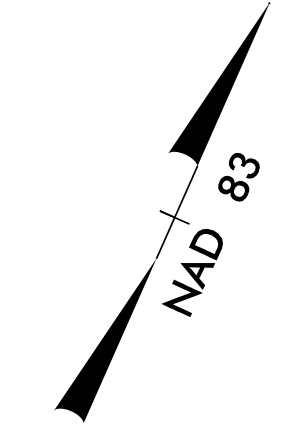
#### MISCELLANEOUS:

Utility Pole	●
Utility Pole with Base	⊕
Utility Located Object	○
Utility Traffic Signal Box	⊕
Utility Unknown U/G Line LOS B (S.U.E.*)	--- UTL ---
U/G Tank; Water, Gas, Oil	▭
Underground Storage Tank, Approx. Loc.	⊕
A/G Tank; Water, Gas, Oil	▭
Geoenvironmental Boring	⊕
U/G Test Hole LOS A (S.U.E.*)	⊕
Abandoned According to Utility Records	AATUR
End of Information	E.O.I.

5/14/99  
4/3/2018  
S:\Submittals\1-5714\Utilities\Engineering\UBOVProj\1-5714\_UT\_rdy\_psh01B\_U002\_psh.dgn

### UTILITIES BY OTHERS

NOTE:  
 ALL UTILITY WORK SHOWN ON THIS SHEET WILL BE DONE BY OTHERS.  
 NO PAYMENT WILL BE MADE TO THE CONTRACTOR FOR UTILITY WORK SHOWN ON THIS SHEET.



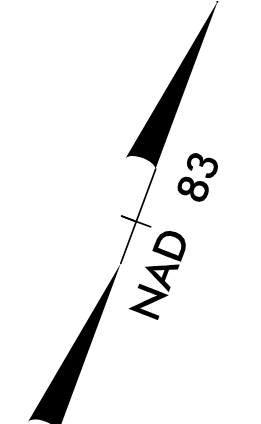
MATCHLINE -YWB- STA. 20+00.00 SEE SHEET UO-4

MATCHLINE -YEB- STA. 20+00.00 SEE SHEET UO-4

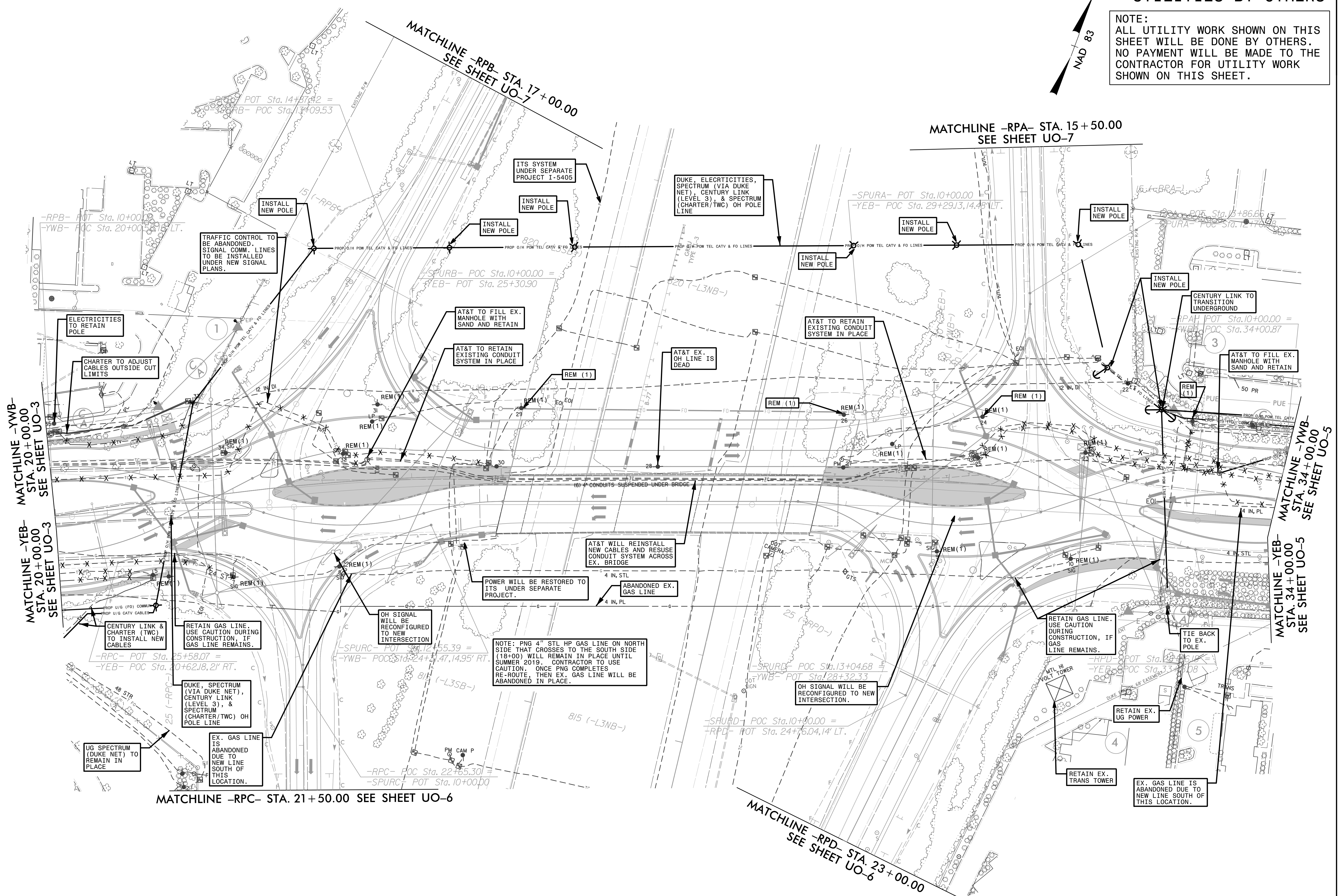
MATCHLINE -Y11- STA. 10+00.00 SEE SHEET UO-8

UTILITIES BY OTHERS

NOTE:  
ALL UTILITY WORK SHOWN ON THIS SHEET WILL BE DONE BY OTHERS. NO PAYMENT WILL BE MADE TO THE CONTRACTOR FOR UTILITY WORK SHOWN ON THIS SHEET.



5/14/99  
4/3/2008  
es & Submittals\1-5714 Utilities\Engineering\UBO\ProJ\1-5714\_ut\_rdy\_psh05\_u004\_psh.dgn



TRAFFIC CONTROL TO BE ABANDONED. SIGNAL COMM. LINES TO BE INSTALLED UNDER NEW SIGNAL PLANS.

ITS SYSTEM UNDER SEPARATE PROJECT I-5405

DUKE, ELECTRICITIES, SPECTRUM (VIA DUKE NET), CENTURY LINK (LEVEL 3), & SPECTRUM (CHARTER/TWC) OH POLE LINE

MATCHLINE -RPA- STA. 15+50.00 SEE SHEET UO-7

MATCHLINE -YWB- STA. 20+00.00 SEE SHEET UO-3

MATCHLINE -YEB- STA. 20+00.00 SEE SHEET UO-3

MATCHLINE -YWB- STA. 34+00.00 SEE SHEET UO-5

MATCHLINE -YEB- STA. 34+00.00 SEE SHEET UO-5

AT&T WILL REINSTALL NEW CABLES AND RESUSE CONDUIT SYSTEM ACROSS EX. BRIDGE

POWER WILL BE RESTORED TO ITS UNDER SEPARATE PROJECT.

NOTE: PNG 4" STL HP GAS LINE ON NORTH SIDE THAT CROSSES TO THE SOUTH SIDE (18+00) WILL REMAIN IN PLACE UNTIL SUMMER 2019. CONTRACTOR TO USE CAUTION. ONCE PNG COMPLETES RE-ROUTE, THEN EX. GAS LINE WILL BE ABANDONED IN PLACE.

DUKE, SPECTRUM (VIA DUKE NET), CENTURY LINK (LEVEL 3), & SPECTRUM (CHARTER/TWC) OH POLE LINE

UG SPECTRUM (DUKE NET) TO REMAIN IN PLACE

EX. GAS LINE IS ABANDONED DUE TO NEW LINE SOUTH OF THIS LOCATION.

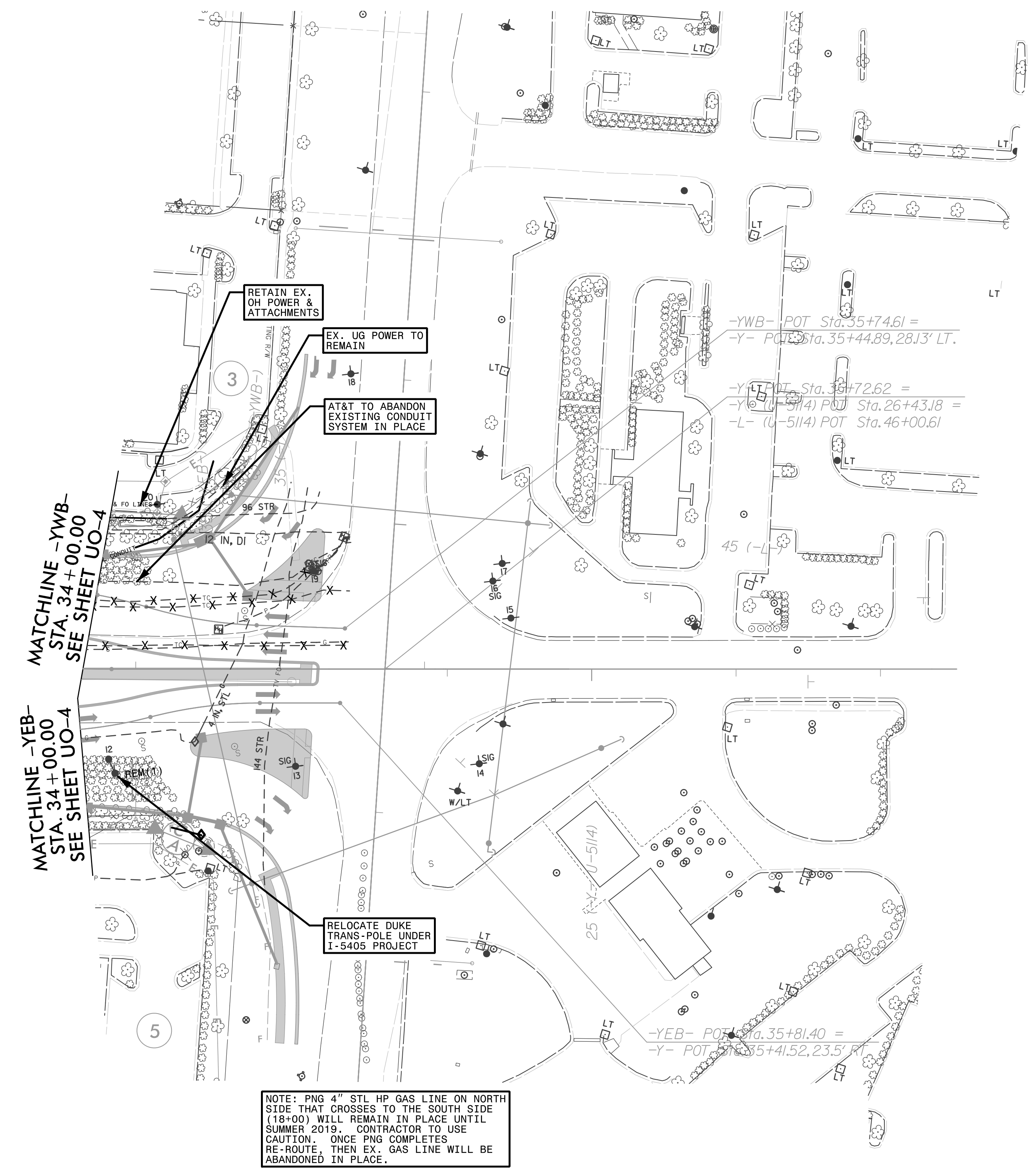
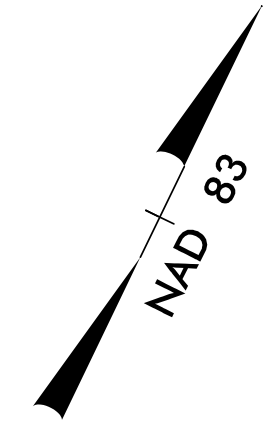
MATCHLINE -RPC- STA. 21+50.00 SEE SHEET UO-6

MATCHLINE -RPD- STA. 23+00.00 SEE SHEET UO-6

EX. GAS LINE IS ABANDONED DUE TO NEW LINE SOUTH OF THIS LOCATION.

### UTILITIES BY OTHERS

**NOTE:**  
 ALL UTILITY WORK SHOWN ON THIS SHEET WILL BE DONE BY OTHERS. NO PAYMENT WILL BE MADE TO THE CONTRACTOR FOR UTILITY WORK SHOWN ON THIS SHEET.

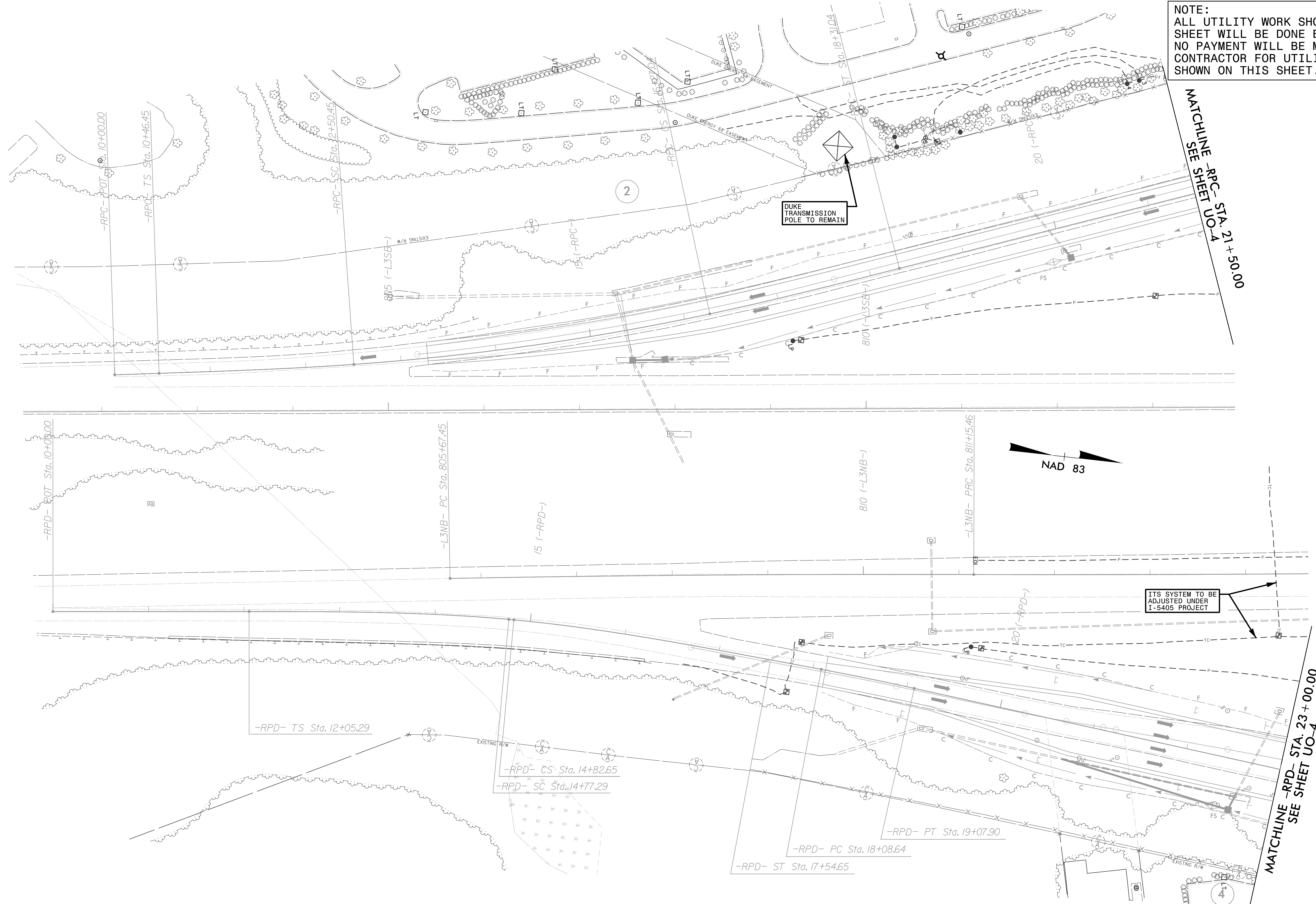


5/14/99

4/3/2018  
 es & Submittals\1-5714 Utilities\Engineering\UBO\Proj\1-5714\_ut\_rdy\_psh06\_u005\_psh.dgn  
 coxmb

### UTILITIES BY OTHERS

NOTE:  
 ALL UTILITY WORK SHOWN ON THIS SHEET WILL BE DONE BY OTHERS.  
 NO PAYMENT WILL BE MADE TO THE CONTRACTOR FOR UTILITY WORK SHOWN ON THIS SHEET.



MATCHLINE -RPC- STA. 21+50.00  
 SEE SHEET UO-4

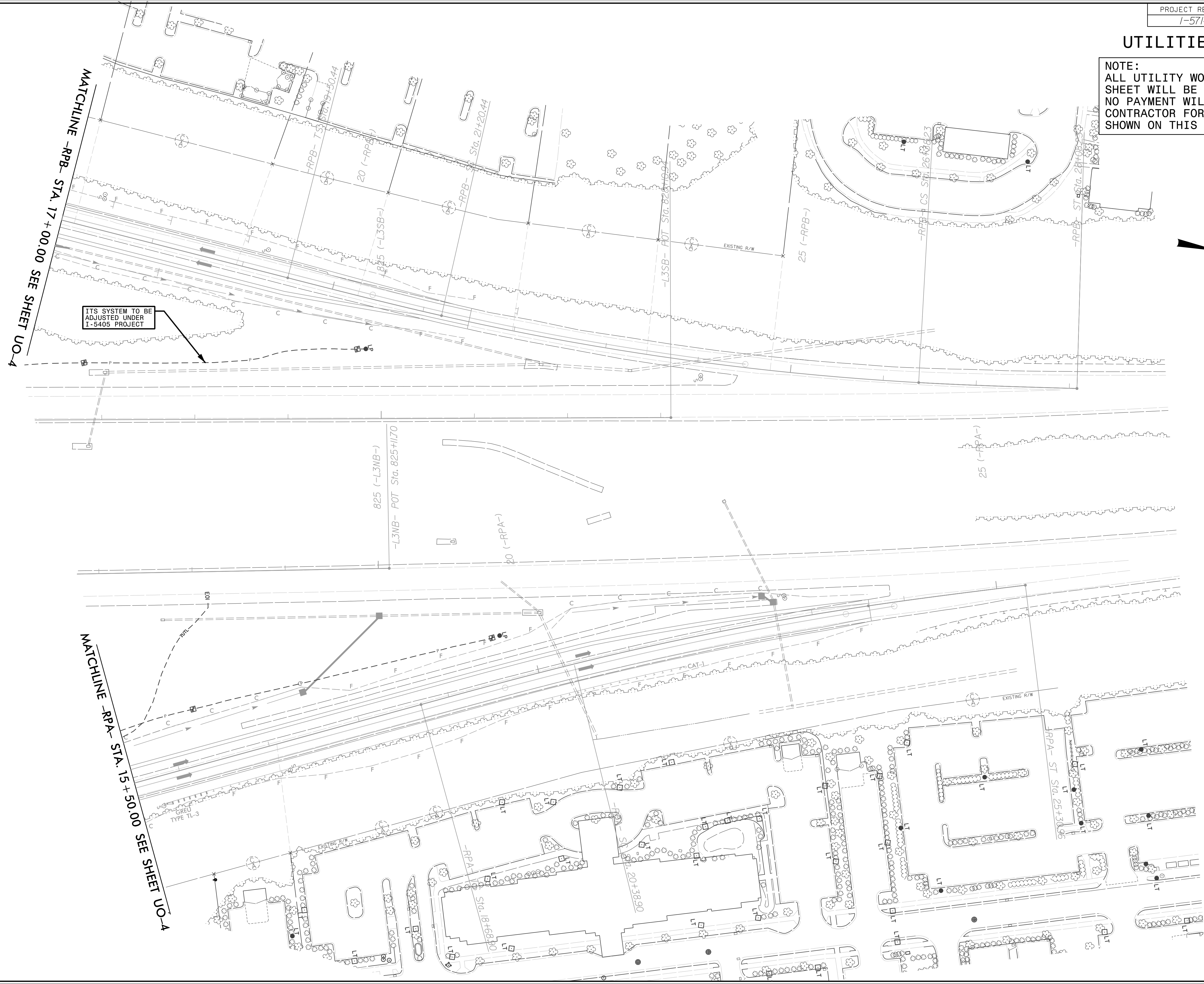
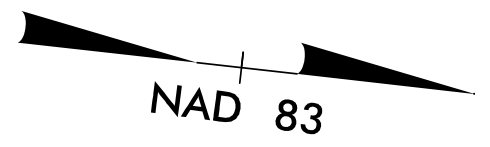
MATCHLINE -RPC- STA. 23+00.00  
 SEE SHEET UO-4

5/14/99

4/3/2008  
 es & Submittals\I-5714 Utilities\Engineering\UBO\Proj\I-5714\_ut\_rdy\_psh07\_U006\_psh.dgn  
 coxmb

### UTILITIES BY OTHERS

**NOTE:**  
 ALL UTILITY WORK SHOWN ON THIS SHEET WILL BE DONE BY OTHERS. NO PAYMENT WILL BE MADE TO THE CONTRACTOR FOR UTILITY WORK SHOWN ON THIS SHEET.



ITS SYSTEM TO BE ADJUSTED UNDER I-5405 PROJECT

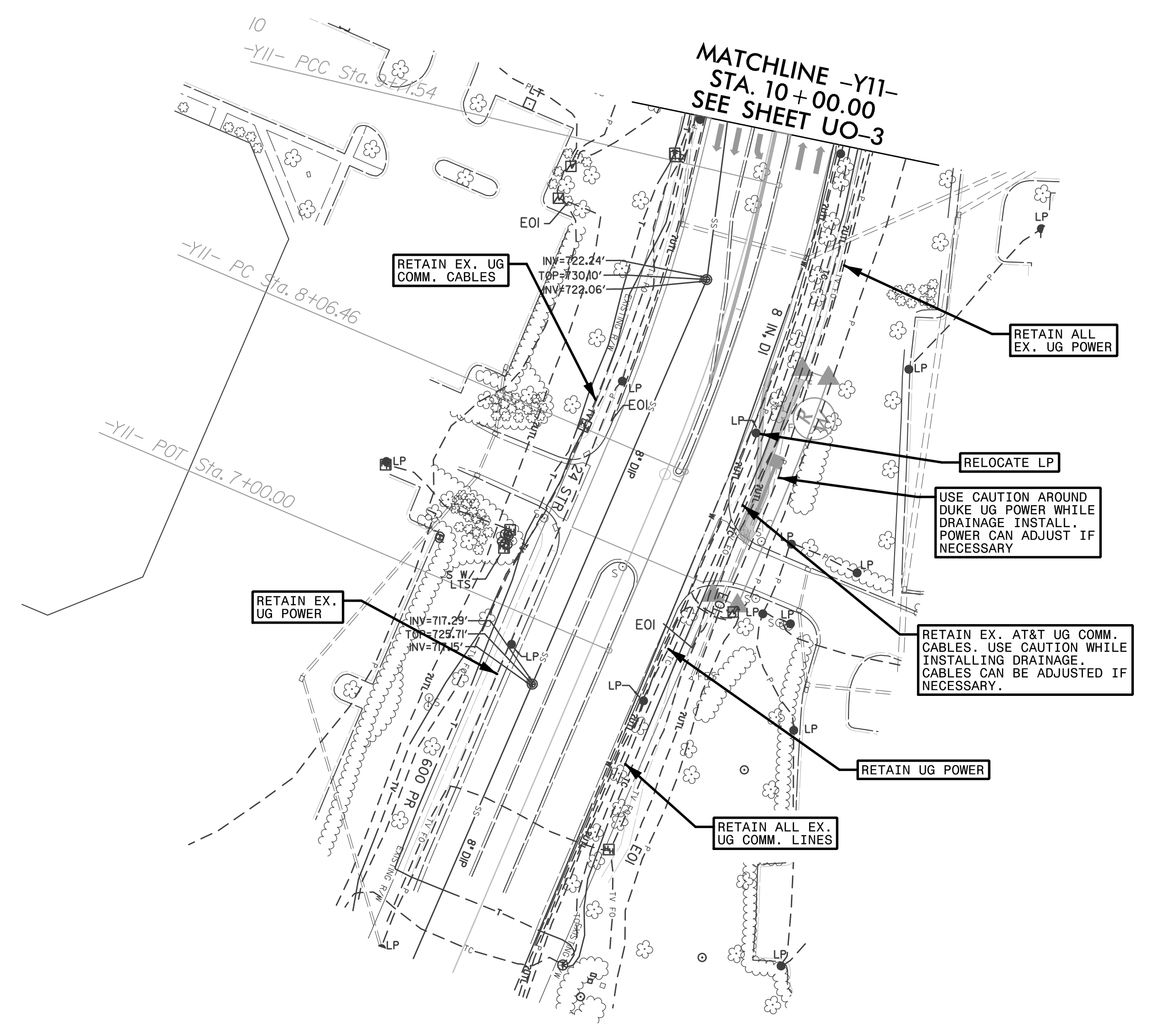
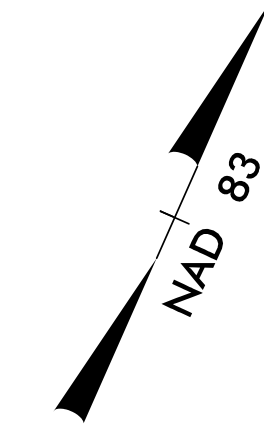
MATCHLINE -RPA- STA. 15 + 50.00 SEE SHEET UO-4

MATCHLINE -RPB- STA. 17 + 00.00 SEE SHEET UO-4



### UTILITIES BY OTHERS

**NOTE:**  
 ALL UTILITY WORK SHOWN ON THIS SHEET WILL BE DONE BY OTHERS. NO PAYMENT WILL BE MADE TO THE CONTRACTOR FOR UTILITY WORK SHOWN ON THIS SHEET.



5/14/99

4/3/2008  
 es & Submittals\1-5714 Utilities\Engineering\UBO\Proj\1-5714\_ut\_rdy\_psh09\_u008\_psh.dgn  
 coxmb