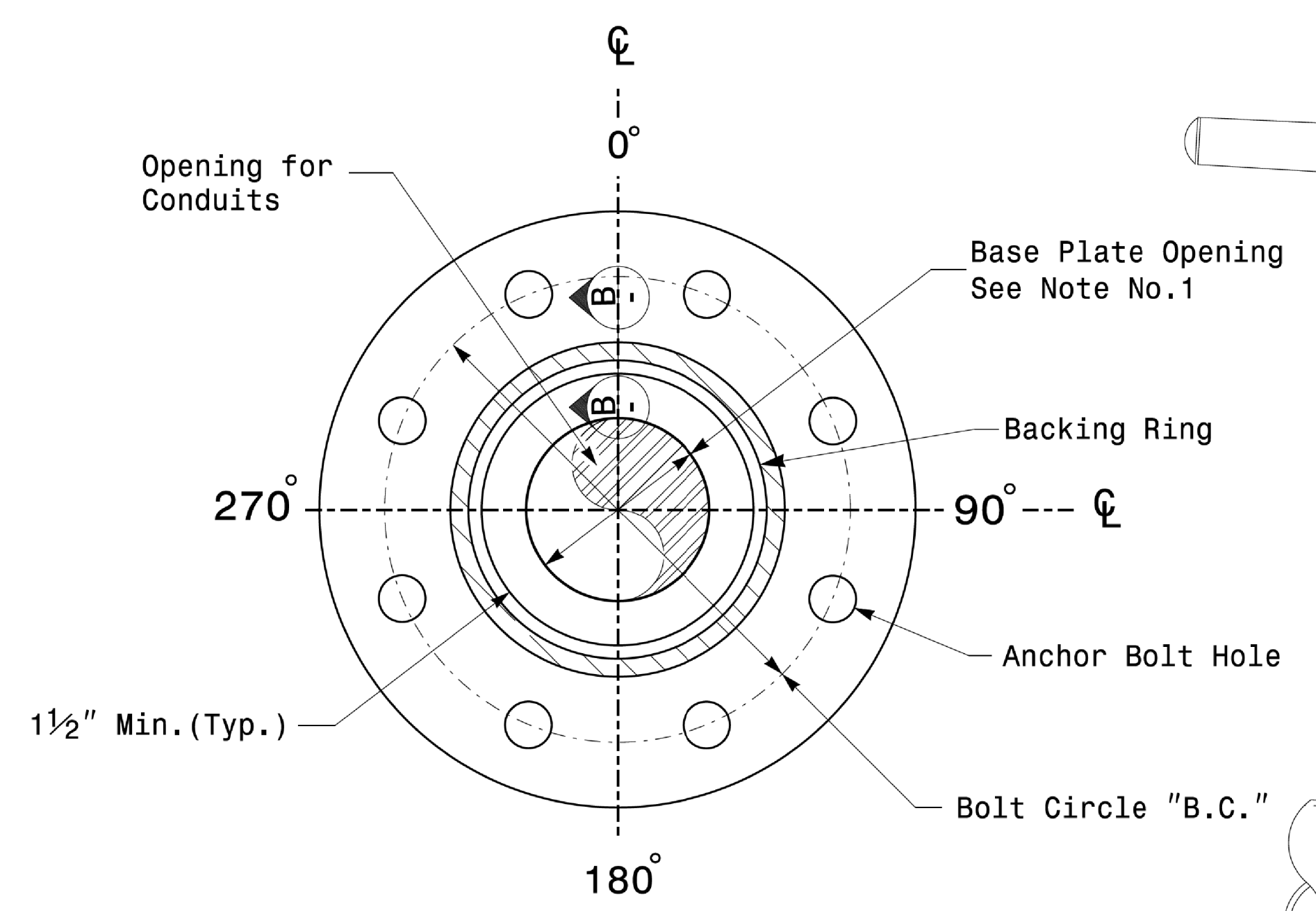
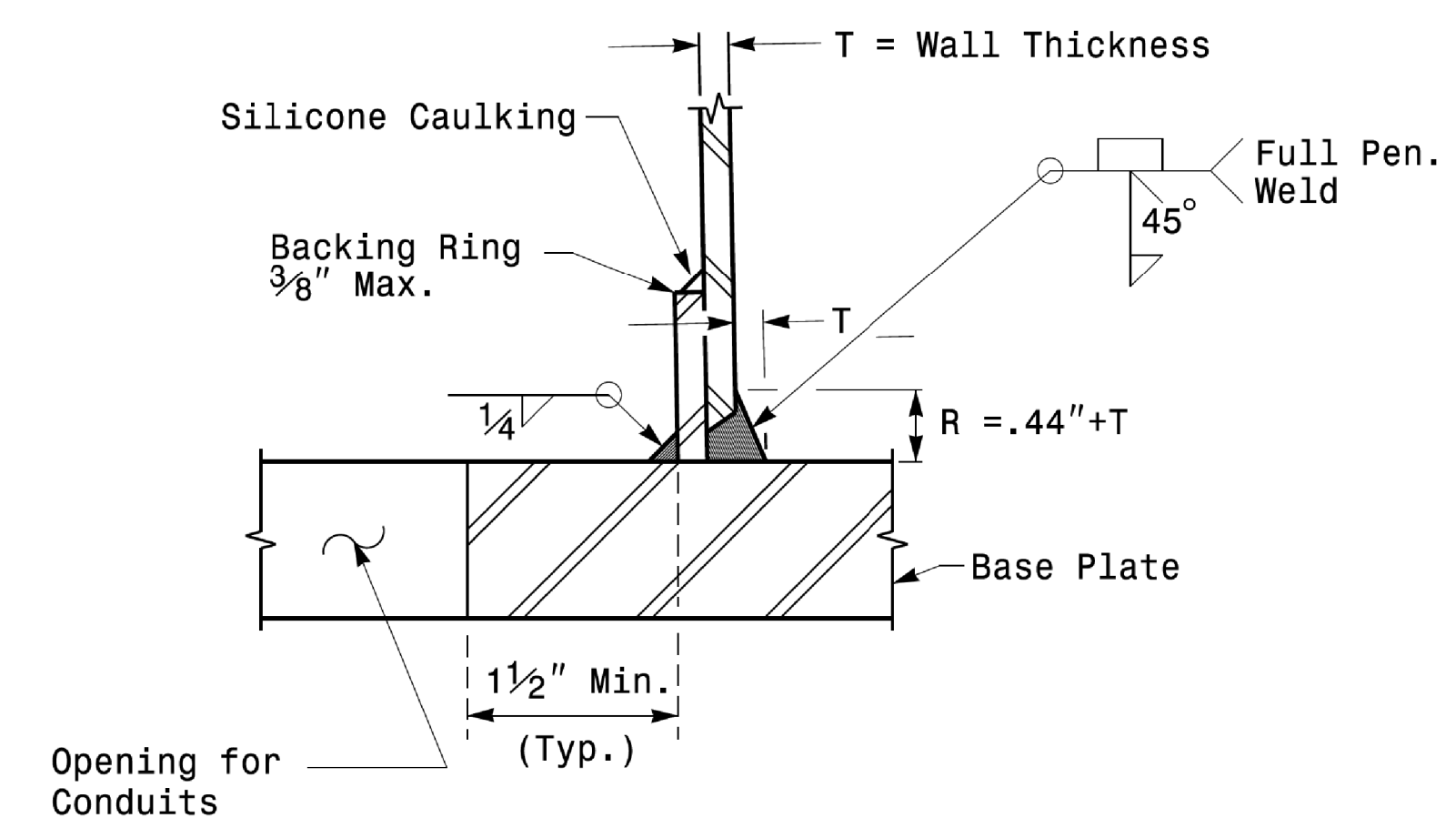


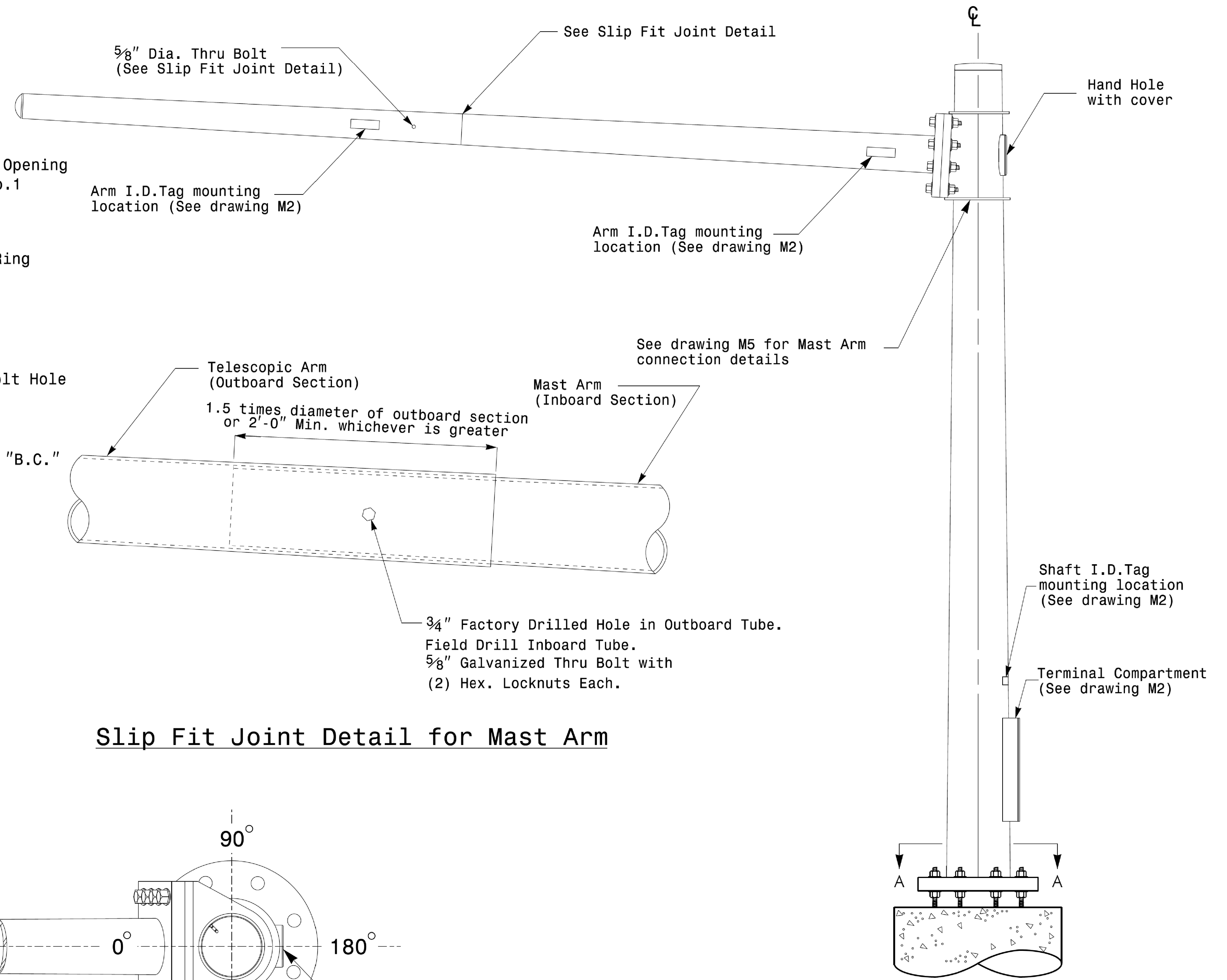
Note:
 1. Opening in pole base plate shall be equal to pole base inside diameter minus 3 1/2" but shall not be less than 8 1/2".



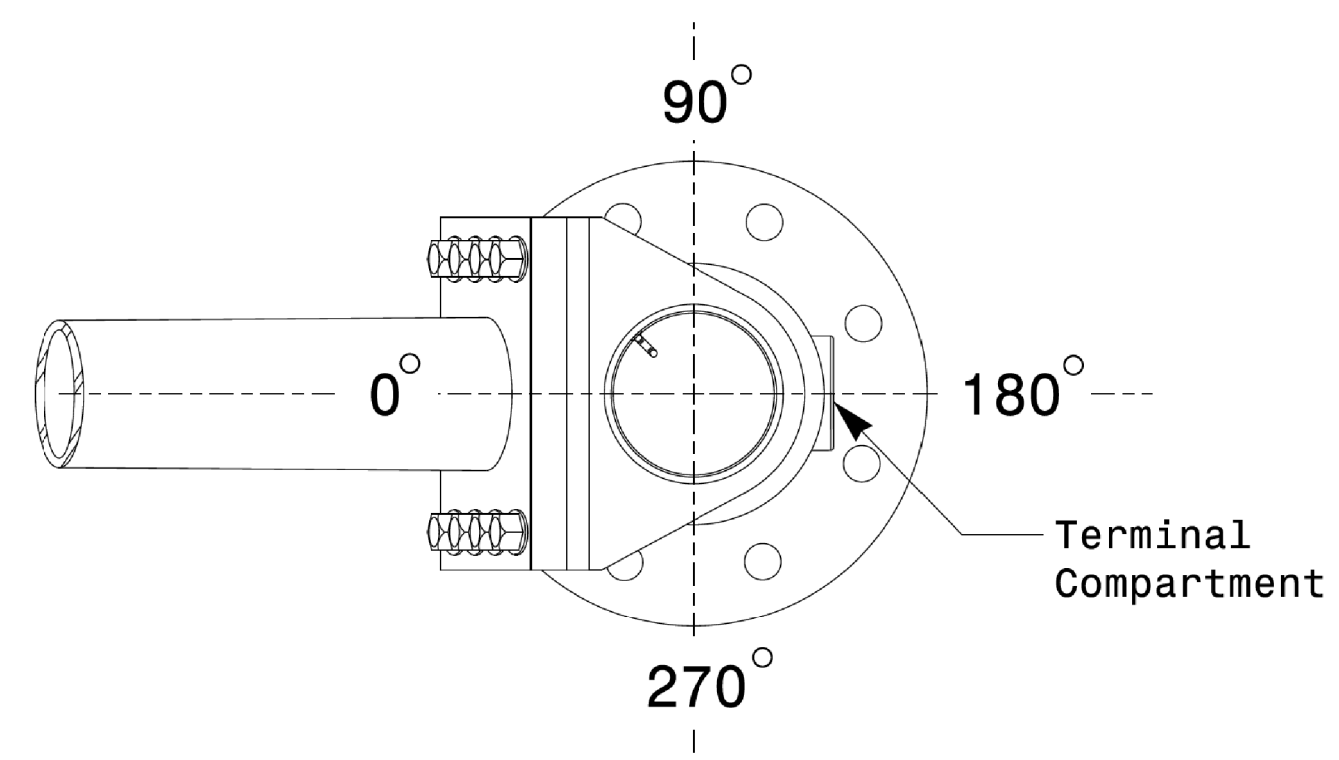
Section A-A
Pole Base Plate Details



Section B-B
 (Pole Attachment to Base Plate)
Full-Penetration Groove Weld Detail



Slip Fit Joint Detail for Mast Arm



Mast Arm Radial Orientation

Mast Arm Pole

Fabrication Details - Mast Arm Poles

11-0CT-2017_08:33 S:\PROJECTS\175\SIGNALSIGNAL Design Section\Mast Arm Pole.dgn

	Typical Fabrication Details For Mast Arm Poles			
	PLAN DATE: OCTOBER 2017	DESIGNED BY: K.C. DURIGON		DocuSigned by: <i>Desh C. Sarkar</i> DATE: 10/11/2017
	PREPARED BY: N. BITTING	REVIEWED BY: D.C. SARKAR		
SCALE: NONE	REVISIONS:	INIT. DATE		