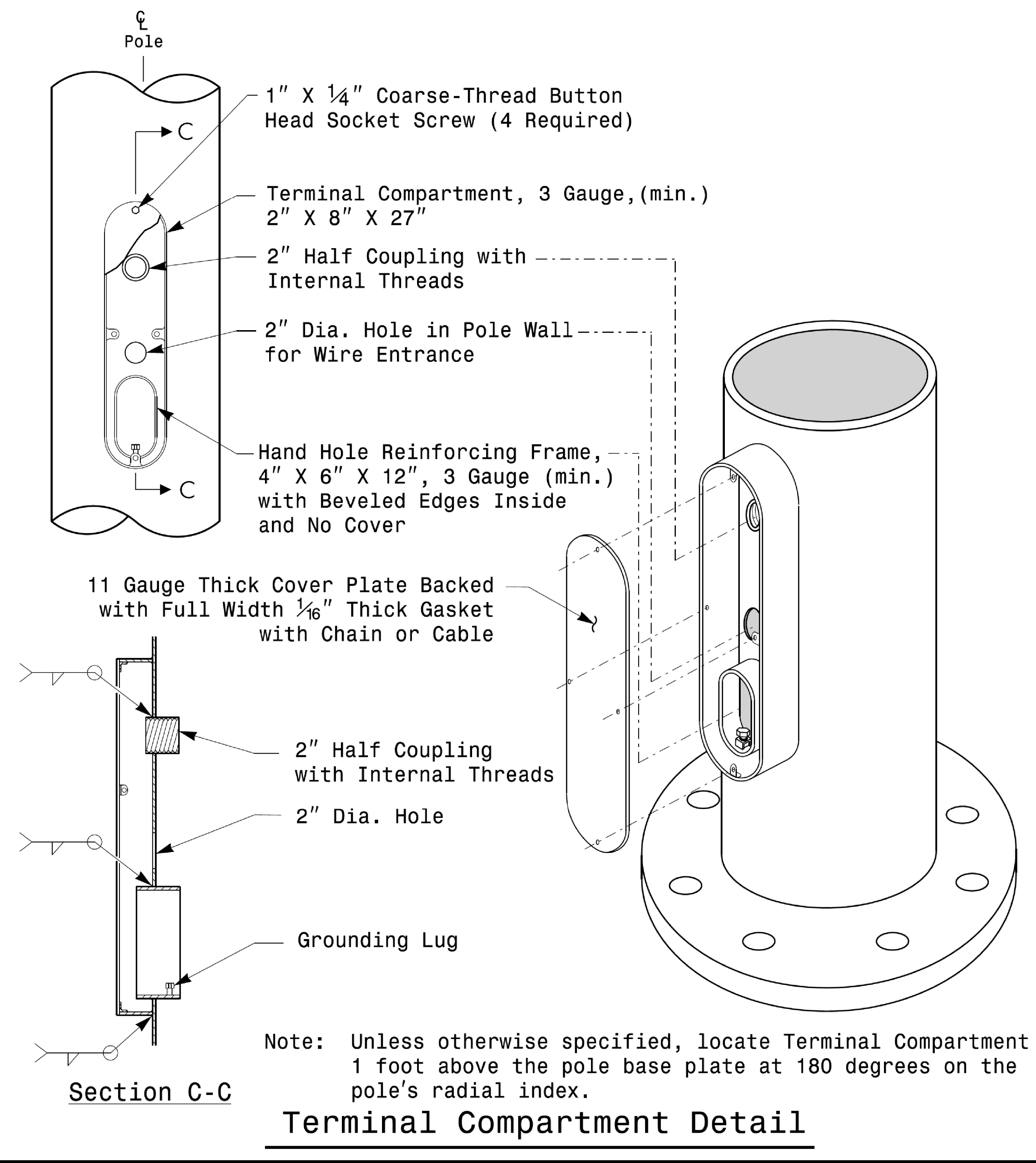


PROJECT ID. NO.	SHEET NO.
I-5714 / U-5114	Sig.M2

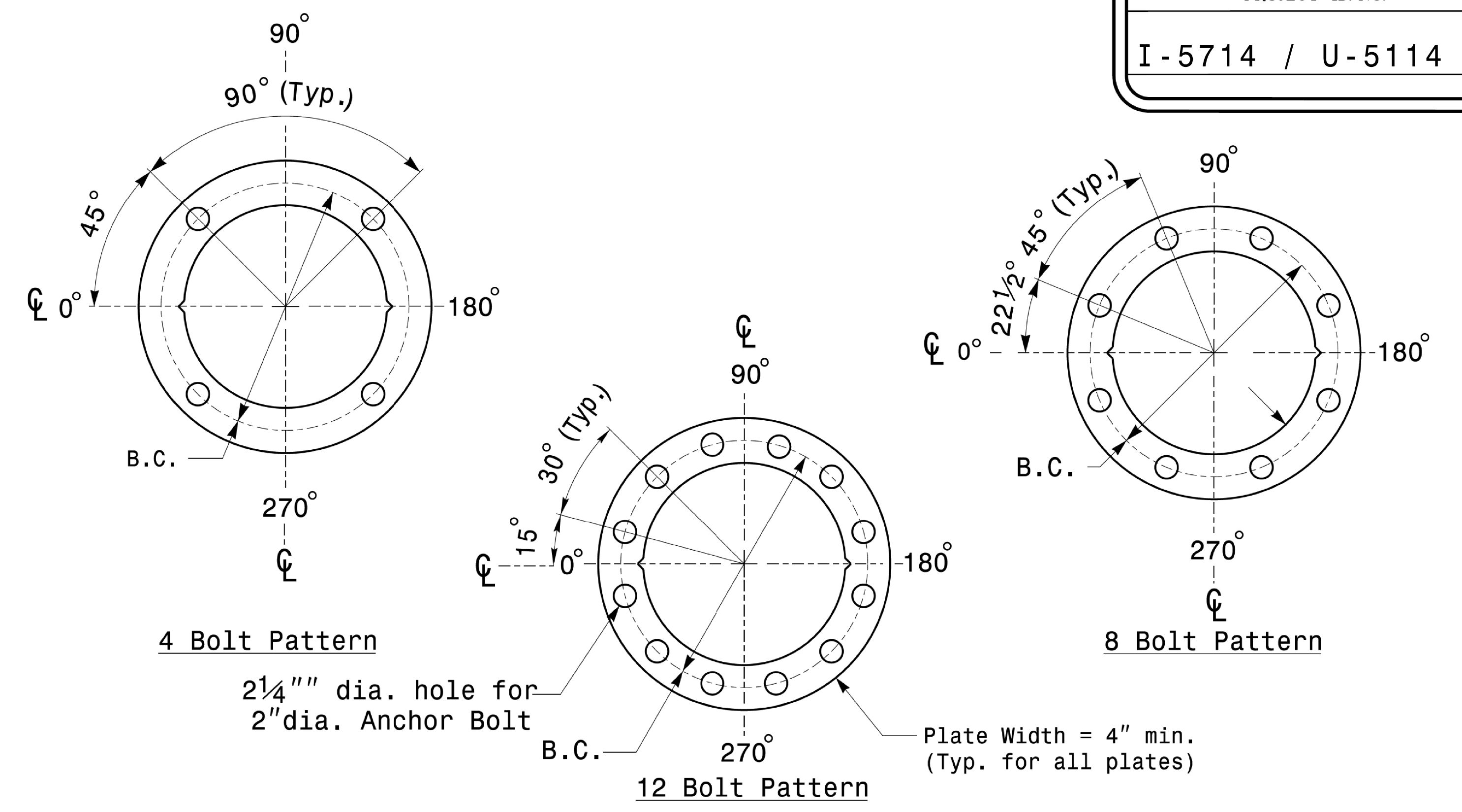


MFG _____ MFG. DATE: MM/YY	MFG _____ MFG. DATE: MM/YY
SHAFT D/T/L/Y _____	SECTION D/T/L/Y _____
ARM-A D/T/L/Y _____	NCDOT SIG. INV. NO. _____
ARM-B D/T/L/Y _____	NCDOT POLE NO. _____
A.B. DIA./B.C./L/Y _____	
NCDOT SIG. INV. NO. _____	
NCDOT POLE NO. _____	

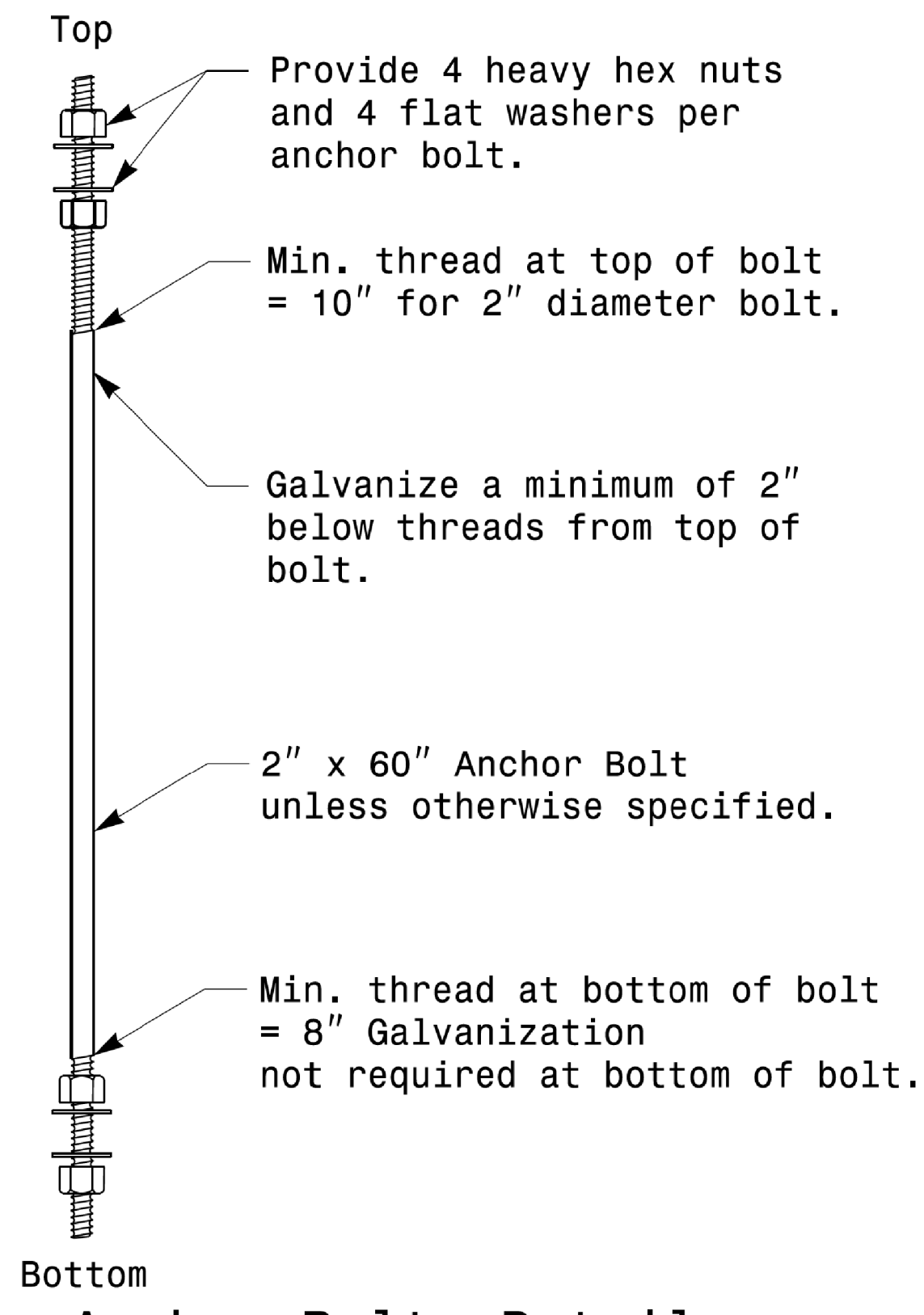
Shaft I.D. Tag  
(Provide on Shaft of Strain Poles and Mast Arm Poles Shaft)

- Notes:
- 1) D= Diameter, T= Thickness, L= Length, Y= Yield Strength
  - 2) A.B. = Anchor Bolt
  - 3) B.C. = Bolt Circle of Anchor Bolts
  - 4) If Custom Design, use "NCDOT STANDARD" line for Signal Inv. Number and pole I.D. number
  - 5) See drawing M3 and M4 for mounting positions of I.D. tags.

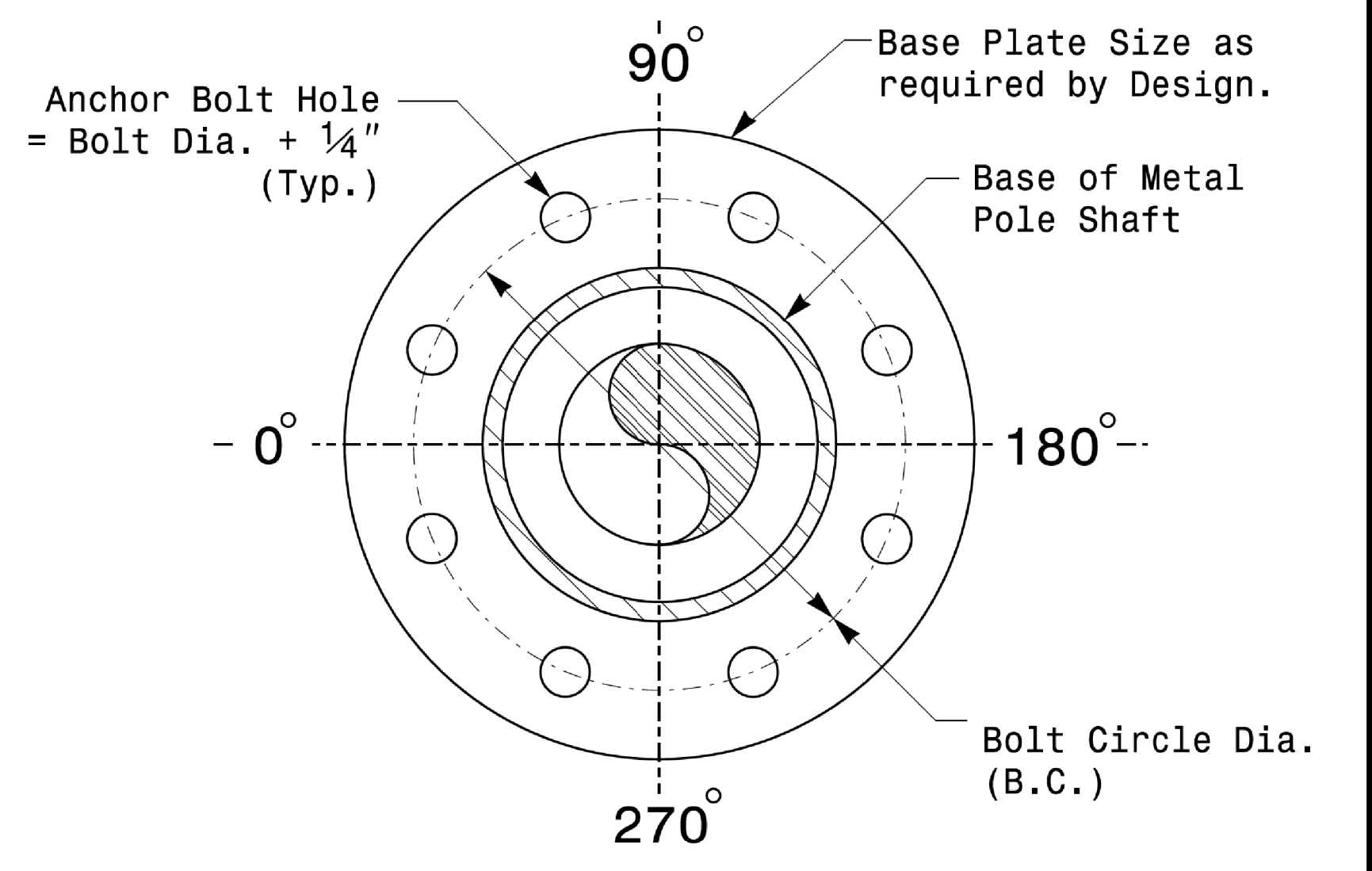
**Identification Tag Details**



Construct Templates and Plates from 1/4" min. thick Steel. Galvanizing is not required.  
**Base Plate Template and Anchor Bolt Lock Plate Details**



**Anchor Bolt Detail**



Note: Base plate may be circular, octagonal, square or rectangular in shape.

**Typical Base Plate Detail**

	Prepared in the Offices of: 		Typical Fabrication Details For All Metal Poles	
	PLAN DATE: OCTOBER 2017 PREPARED BY: N. BITTING	DESIGNED BY: C.F. ANDREWS REVIEWED BY: D.C. SARKAR	REVISIONS INIT. DATE	SCALE 0 NA NONE

**Fabrication Details – All Metal Poles**

11/11/2017 10:30:30 AM S:\PROJECTS\SIGMET\Sigmet\Sigmet\2017\14 Sig.M2 Sig. Fabrication Details-All Poles.dgn