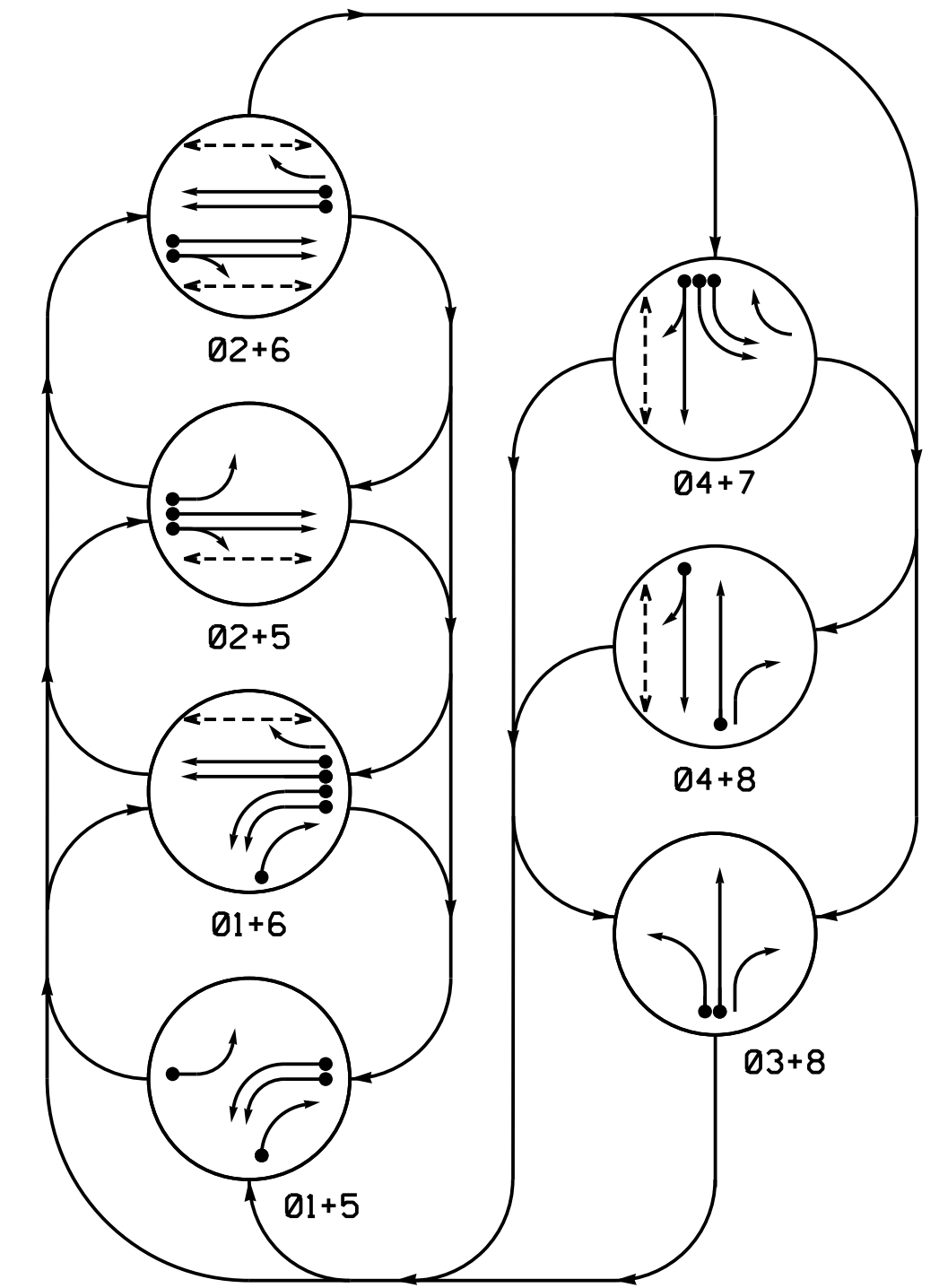


PHASING DIAGRAM



PHASING DIAGRAM DETECTION LEGEND

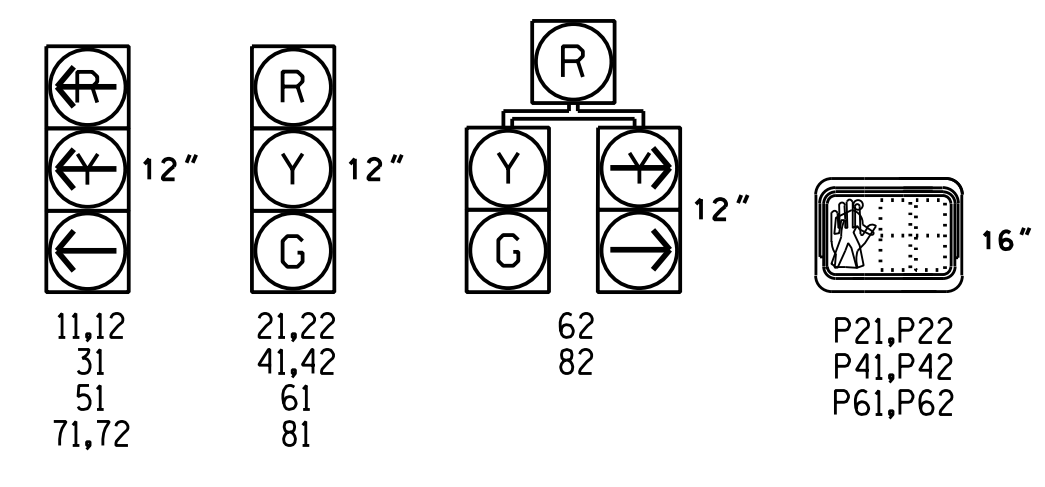
- DETECTED MOVEMENT
UNDETECTED MOVEMENT (OVERLAP)
UNSIGNALIZED MOVEMENT
PEDESTRIAN MOVEMENT

TABLE OF OPERATION

Table with columns for SIGNAL FACE and PHASE (01+5, 01+6, 02+5, 02+6, 04+7, 04+8, 03+8, FLASH). Rows list signal faces and their corresponding phase settings.

SIGNAL FACE I.D.

All Heads L.E.D.



OASIS 2070E LOOP & DETECTOR INSTALLATION CHART

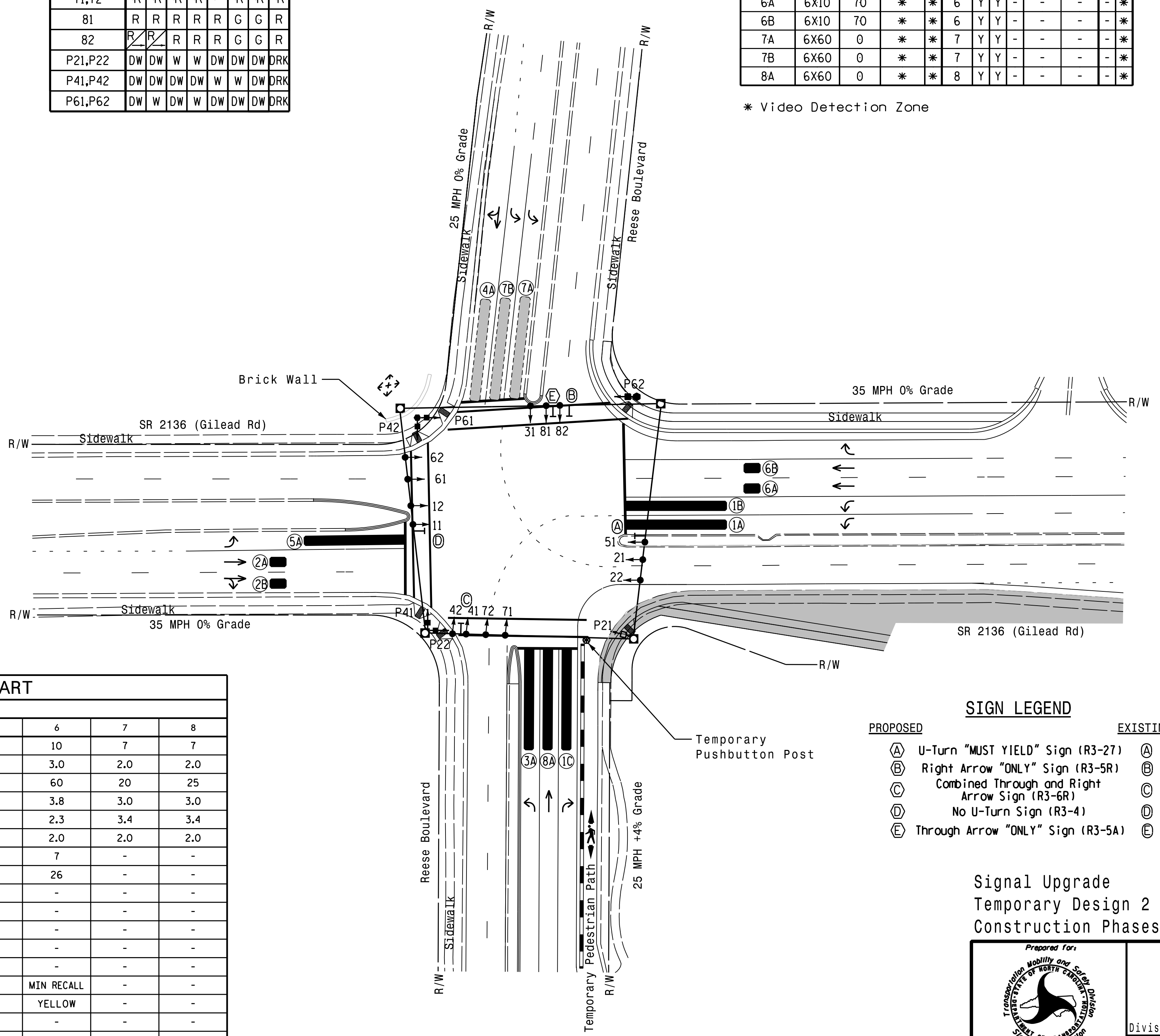
Table with columns for LOOP, SIZE (FT), DISTANCE FROM STOPBAR (FT), TURNS, NEW LOOP, PHASE, CALLING, EXTENSION, FULL TIME DELAY, STRETCH TIME, DELAY TIME, SYSTEM LOOP, NEW CARD. Rows list loops 1A through 8A.

* Video Detection Zone

7 Phase Fully Actuated Gilead Road Closed Loop System

NOTES

- 1. Refer to "Roadway Standard Drawings NCDOT" dated January 2018 and "Standard Specifications for Roads and Structures" dated January 2018.
2. Do not program signal for late night flashing operation unless otherwise directed by the Engineer.
3. Phase 1 and/or 5 may be lagged.
4. The order of phase 3 and phase 7 may be reversed.
5. Reposition existing signal heads numbered 31, 81, 82, and sign 8.
6. Set all detector units to presence mode.
7. Omit "WALK" and flashing "DON'T WALK" with no pedestrian calls.
8. Program pedestrian heads to countdown the flashing "DON'T WALK" time only.
9. Incorporate Video Detection system for vehicle detection.
10. Provide the Engineer with the Manufacturer's approved Video Detection locations and mounting heights to obtain detection zones as shown.
11. Maximum times shown in timing chart are for free-run operation only. Coordinated signal system timing values supersede these values.
12. Closed loop system data: Controller Asset #1753



LEGEND

- PROPOSED: Traffic Signal Head, Pedestrian Signal Head With Push Button & Sign, Controller & Cabinet, Junction Box, Right of Way, Directional Arrow, Video Detection Zone, Metal Strain Pole, Type I Pushbutton Post, Type II Signal Pedestal, Wheelchair Ramp, Construction Zone.
EXISTING: Traffic Signal Head, Pedestrian Signal Head With Push Button & Sign, Controller & Cabinet, Junction Box, Right of Way, Directional Arrow, Video Detection Zone, Metal Strain Pole, Type I Pushbutton Post, Type II Signal Pedestal, Wheelchair Ramp, Construction Zone.

SIGN LEGEND

- PROPOSED: (A) U-Turn "MUST YIELD" Sign (R3-27), (B) Right Arrow "ONLY" Sign (R3-5R), (C) Combined Through and Right Arrow Sign (R3-6R), (D) No U-Turn Sign (R3-4), (E) Through Arrow "ONLY" Sign (R3-5A).
EXISTING: (A) U-Turn "MUST YIELD" Sign (R3-27), (B) Right Arrow "ONLY" Sign (R3-5R), (C) Combined Through and Right Arrow Sign (R3-6R), (D) No U-Turn Sign (R3-4), (E) Through Arrow "ONLY" Sign (R3-5A).

OASIS 2070E TIMING CHART table with columns for FEATURE and PHASE (1-8). Rows include Min Green 1*, Extension 1*, Max Green 1*, Yellow Clearance, Red Clearance, Red Revert, Walk 1*, Don't Walk 1, Seconds Per Actuation, Max Variable Initial, Time Before Reduction, Time To Reduce, Minimum Gap, Recall Mode, Vehicle Call Memory, Dual Entry, Simultaneous Gap.

* These values may be field adjusted. Do not adjust Min Green and Extension times for phases 2 and 6 lower than what is shown. Min Green for all other phases should not be lower than 4 seconds.

Signal Upgrade
Temporary Design 2
Construction Phases II, III

DOCUMENT NOT CONSIDERED FINAL UNLESS ALL SIGNATURES COMPLETED

Professional seal for North Carolina Professional Engineer, N. R. Simmons, No. 031464. Includes project name, location, date, and signature lines.

HNTB logo and contact information: HNTB NORTH CAROLINA, P.C., 343 E. Six Forks Road, Suite 200, Raleigh, North Carolina 27609, NC License No: C-1554, (919) 546-8997.

