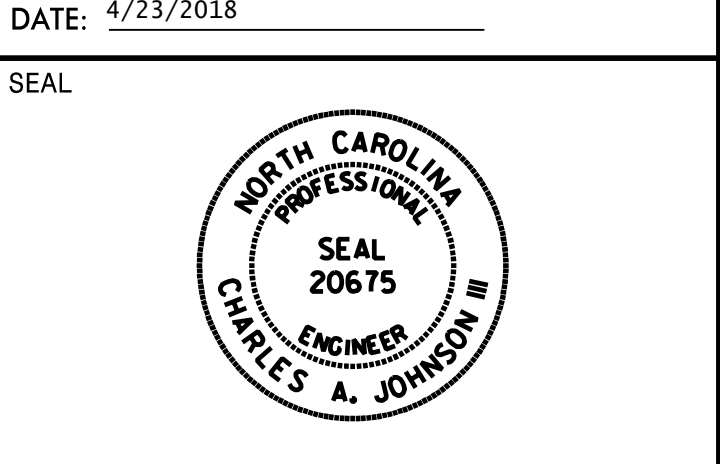


APPROVED: *Charles A. Johnson, III*
 DATE: 4/23/2018

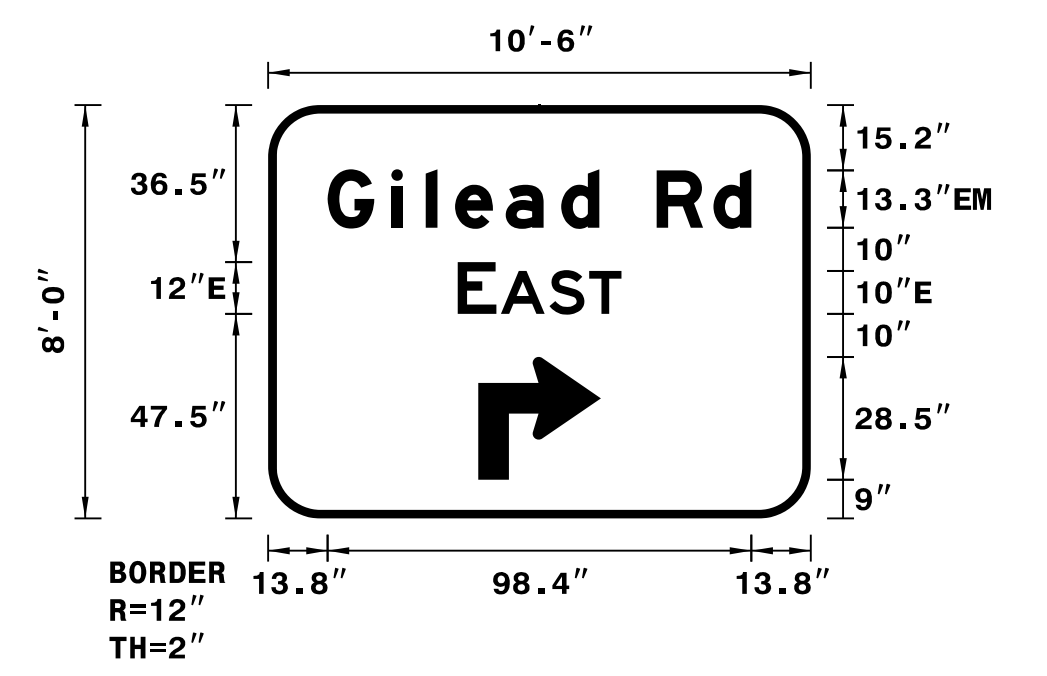


DOCUMENT NOT CONSIDERED FINAL
 UNLESS ALL SIGNATURES COMPLETED

SIGN NUMBER: 17
 TYPE: A (OVHD)
 QUANTITY: 1
 SIGN WIDTH: 10'-6"
 HEIGHT: 8'-0"
 TOTAL AREA: 84.0 Sq.Ft.
 BORDER TYPE: FLUSH
 RECESS: 0"
 WIDTH: 2"
 RADII: 12"
 NO. Z BARS: 3
 LENGTH: 118.0

SYMBOL	X	Y	WID	HT
Type A Arrow	48.8	9	28.5	28.5

DESIGN BY: JTT
 PROJECT ID: I-5714/U-5114
 CHECKED BY: TRT/ADK
 DIV: 10
 DATE: August 2017



- NOTES:
- Legend and border shall be direct applied Grade A reflective sheeting.
 - Arrow shall be Grade A reflective sheeting on 0.032" aluminum and demountable.
 - Background shall be Grade C reflective sheeting.

LETTER POSITIONS

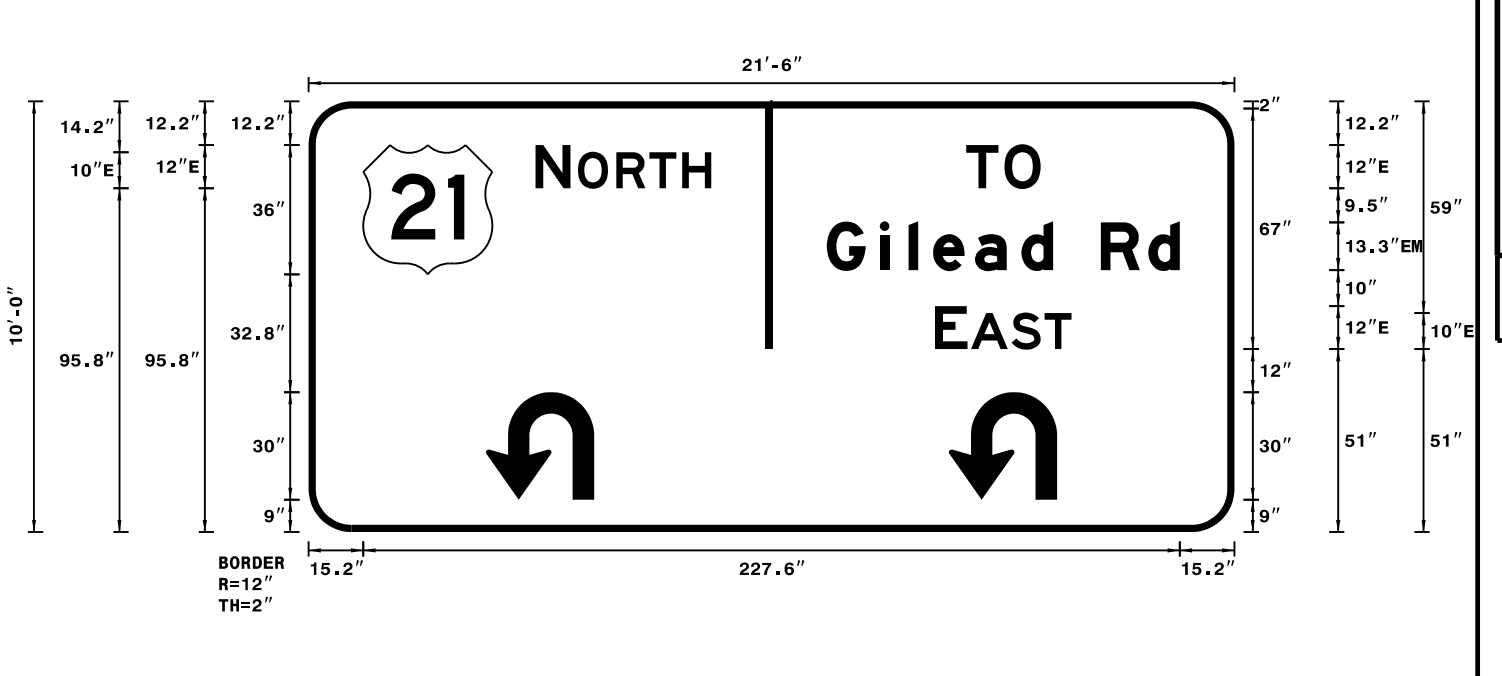
Letter spacings are to start of next letter

Series/Size	Text Length
EM 2000	98.4
E 2000	38

SIGN NUMBER: 18
 TYPE: A (OVHD)
 QUANTITY: 1
 SIGN WIDTH: 21'-6"
 HEIGHT: 10'-0"
 TOTAL AREA: 215.0 Sq.Ft.
 BORDER TYPE: FLUSH
 RECESS: 0"
 WIDTH: 2"
 RADII: 12"
 NO. Z BARS: 3
 LENGTH: 250.0

SYMBOL	X	Y	WID	HT
M1_4	15.2	71.8	36	36
U-Turn Arrow	49.4	9	30.1	30
U-Turn Arrow	178.4	9	30.1	30

DESIGN BY: JTT
 PROJECT ID: I-5714/U-5114
 CHECKED BY: TRT/ADK
 DIV: 10
 DATE: August 2017



- NOTES:
- Legend and border shall be direct applied Grade A reflective sheeting.
 - Arrows and shield shall be Grade A reflective sheeting on 0.032" aluminum and demountable.
 - Background shall be Grade C reflective sheeting.

LETTER POSITIONS

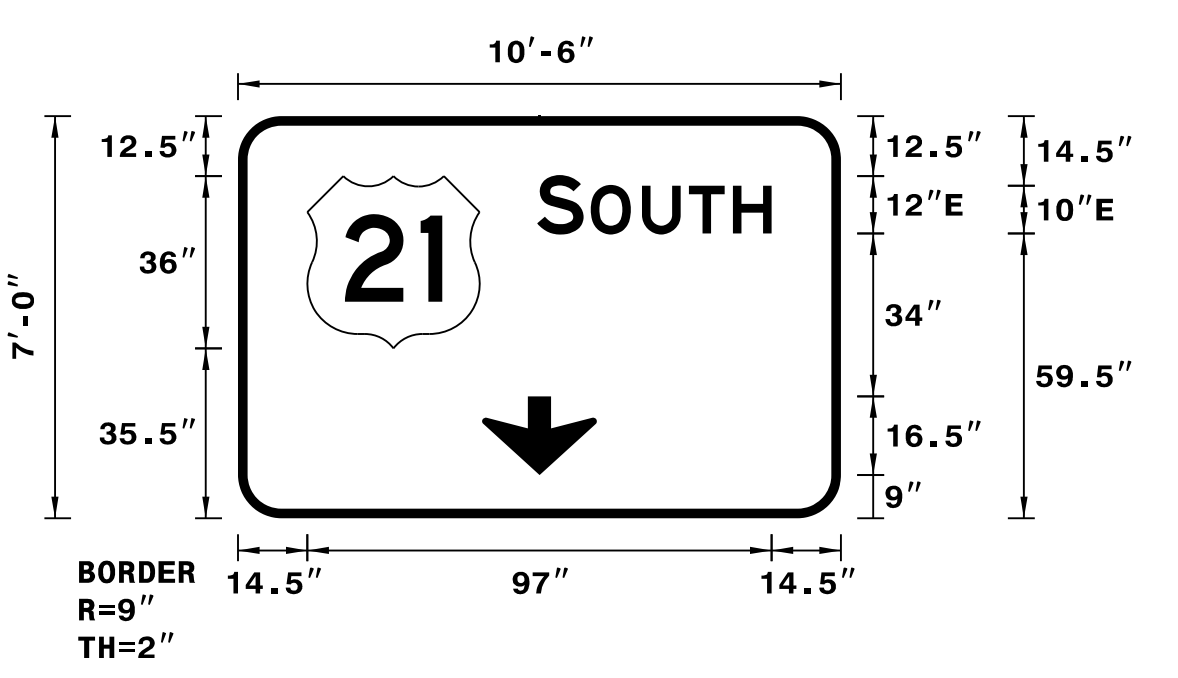
Letter spacings are to start of next letter

Series/Size	Text Length
E 2000	49
E 2000	20.8
EM 2000	98.4
E 2000	38

SIGN NUMBER: 19
 TYPE: A (OVHD)
 QUANTITY: 1
 SIGN WIDTH: 10'-6"
 HEIGHT: 7'-0"
 TOTAL AREA: 73.5 Sq.Ft.
 BORDER TYPE: FLUSH
 RECESS: 0"
 WIDTH: 2"
 RADII: 9"
 NO. Z BARS: 2
 LENGTH: 118.0

SYMBOL	X	Y	WID	HT
M1_4	14.5	35.5	36	36
Type C Arrow	51	9	24	16.5

DESIGN BY: JTT
 PROJECT ID: I-5714/U-5114
 CHECKED BY: TRT/ADK
 DIV: 10
 DATE: August 2017



- NOTES:
- Legend and border shall be direct applied Grade A reflective sheeting.
 - Arrow and shield shall be Grade A reflective sheeting on 0.032" aluminum and demountable.
 - Background shall be Grade C reflective sheeting.

LETTER POSITIONS

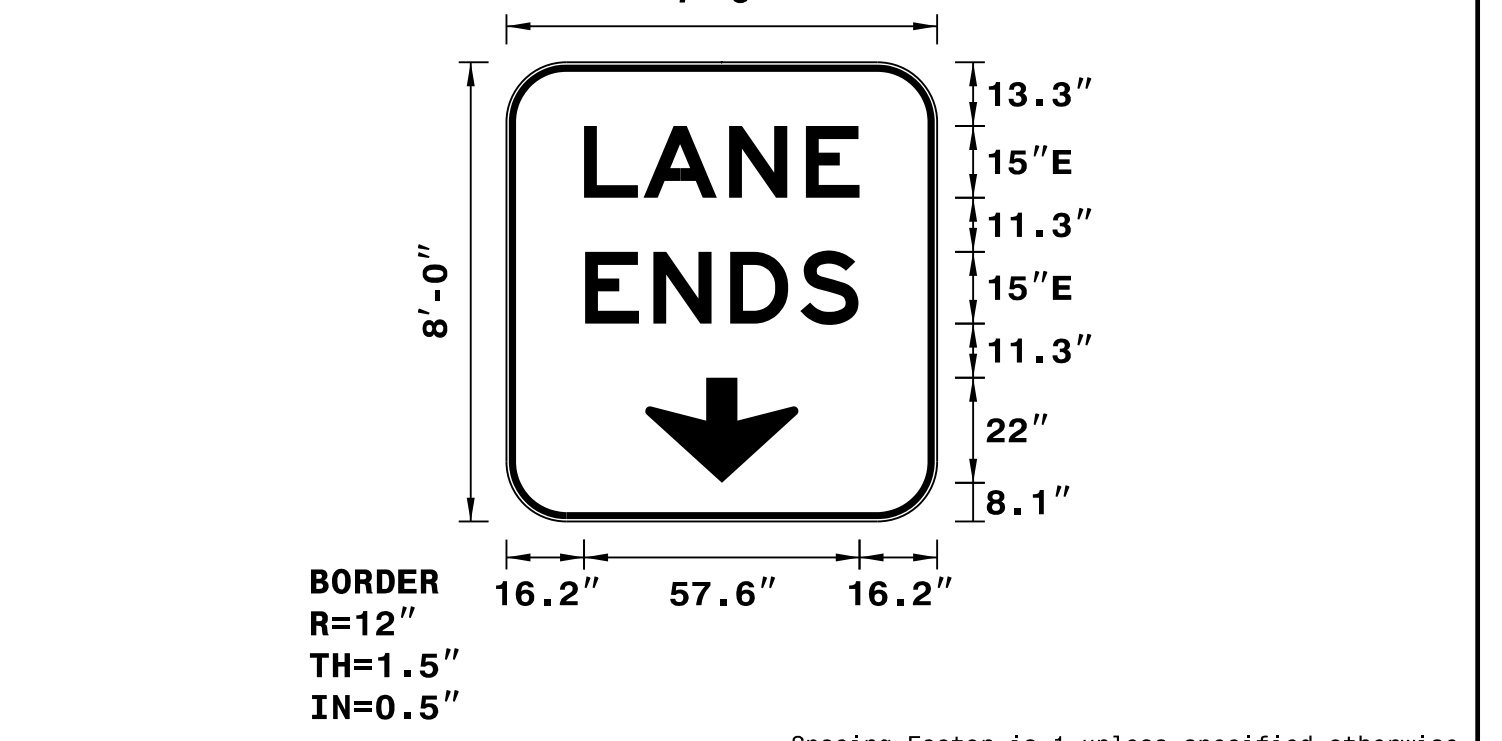
Letter spacings are to start of next letter

Series/Size	Text Length
E 2000	49

SIGN NUMBER: 20
 TYPE: A (OVHD)
 QUANTITY: 1
 SIGN WIDTH: 7'-6"
 HEIGHT: 8'-0"
 TOTAL AREA: 60.0 Sq.Ft.
 BORDER TYPE: RECESSED
 RECESS: 0.5"
 WIDTH: 1.5"
 RADII: 12"
 NO. Z BARS: 3
 LENGTH: 82.0

SYMBOL	X	Y	WID	HT
Type C Arrow	29	8.1	32	22

DESIGN BY: JTT
 PROJECT ID: I-5714/U-5114
 CHECKED BY: TRT/ADK
 DIV: 10
 DATE: August 2017



- NOTES:
- Legend and border shall be black non-reflective sheeting.
 - Arrow shall be Grade A reflective sheeting on 0.032" aluminum and demountable.
 - Background shall be Grade C reflective sheeting.

LETTER POSITIONS

Letter spacings are to start of next letter

Series/Size	Text Length
E 2000	57.6
E 2000	57.2