

PARAPET NOTES

CONCRETE PARAPET ON EACH APPROACH SLAB SHALL NOT BE CAST UNTIL ALL SLAB CONCRETE IN THE APPROACH SLAB HAS BEEN CAST AND HAS REACHED A MINIMUM COMPRESSIVE STRENGTH OF 3,000 PSI.

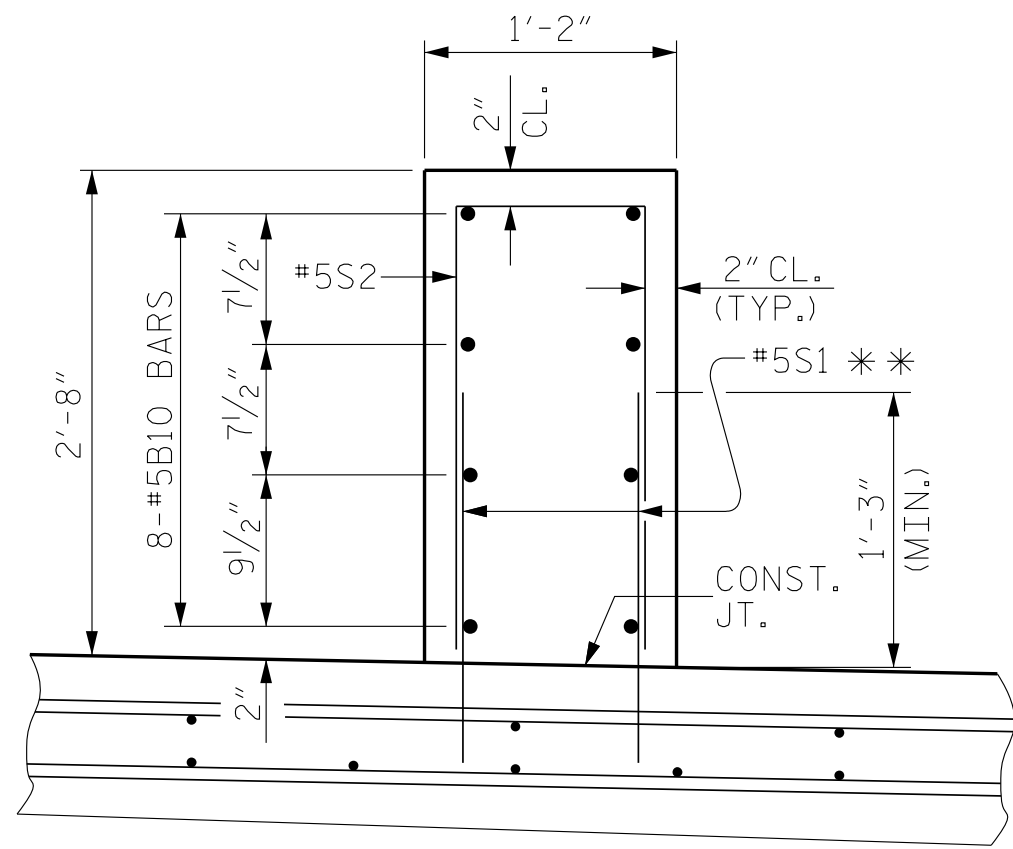
ALL REINFORCING STEEL IN THE CONCRETE PARAPET SHALL BE EPOXY COATED.

GROOVED CONTRACTION JOINTS, 1/2" IN DEPTH, SHALL BE TOOLED IN ALL EXPOSED FACES OF THE PARAPET AND IN ACCORDANCE WITH ARTICLE 825-10(B) OF THE STANDARD SPECIFICATIONS. A CONTRACTION JOINT SHALL BE LOCATED AT EACH THIRD POINT BETWEEN PARAPET EXPANSION JOINTS. ONLY ONE CONTRACTION JOINT IS REQUIRED AT MIDPOINT OF PARAPET SEGMENTS LESS THAN 20 FEET IN LENGTH AND NO CONTRACTION JOINTS ARE REQUIRED FOR THOSE SEGMENTS LESS THAN 10 FEET IN LENGTH.

FOR LOCATION OF GUARDRAIL ANCHOR ASSEMBLIES, SEE "GUARDRAIL ANCHORAGE DETAILS FOR 1'-2" X 2'-8" CONCRETE PARAPET" SHEET.

THE CONCRETE PARAPET WILL BE PAID FOR AT THE LIN. FT. PRICE BID FOR "1'-2" X 2'-8" CONCRETE PARAPET".

** THE CONTRACTOR SHALL USE ADHESIVELY ANCHORED #5S1 BARS. LEVEL 2 FIELD TESTING IS REQUIRED, AND THE YIELD LOAD OF THE #5S1 IS 18.6 KIPS. FOR ADHESIVELY ANCHORED ANCHOR BOLTS OR DOWELS, SEE STANDARD SPECIFICATIONS.



SECTION Y-Y

BILL OF MATERIAL					
1'-2" X 2'-8" CONCRETE PARAPET					
BAR	NO.	SIZE	TYPE	LENGTH	WEIGHT
* B10	16	#5	STR	24'-2"	403
* S1	120	#5	STR	1'-9"	219
* S2	60	#5	1	5'-6"	344
* EPOXY COATED REINFORCING STEEL				LBS.	966
CLASS AA CONCRETE				C. Y.	5.6
1'-2" X 2'-8" CONCRETE PARAPET				LIN. FT.	49.0
BAR TYPE					
ALL BAR DIMENSIONS ARE OUT TO OUT.					

NOTES

APPROACH SLAB SHALL NOT BE CONSTRUCTED PRIOR TO COMPLETION OF THE BRIDGE DECK.

FOR TEMPORARY GEOTEXTILE WALL INCLUDING GEOTEXTILE, 6" Ø DRAINAGE PIPE, WELDED WIRE FORM, AND SELECT MATERIAL, SEE ROADWAY PLANS.

GEOTEXTILE (TYPE 1 OR TYPE 5) SHALL BE IN ACCORDANCE WITH THE STANDARD SPECIFICATIONS SECTION 1056.

SELECT MATERIAL BACKFILL (CLASS V OR CLASS VI) SHALL BE IN ACCORDANCE WITH STANDARD SPECIFICATIONS SECTION 1016.

SELECT MATERIAL BACKFILL IS TO BE CONTINUOUS ALONG FILL FACE OF BACKWALL FROM OUTSIDE EDGE TO OUTSIDE EDGE OF APPROACH SLAB.

FOR THE 6" Ø DRAINAGE PIPE OUTLET(S), SEE ROADWAY STANDARD DRAWINGS.

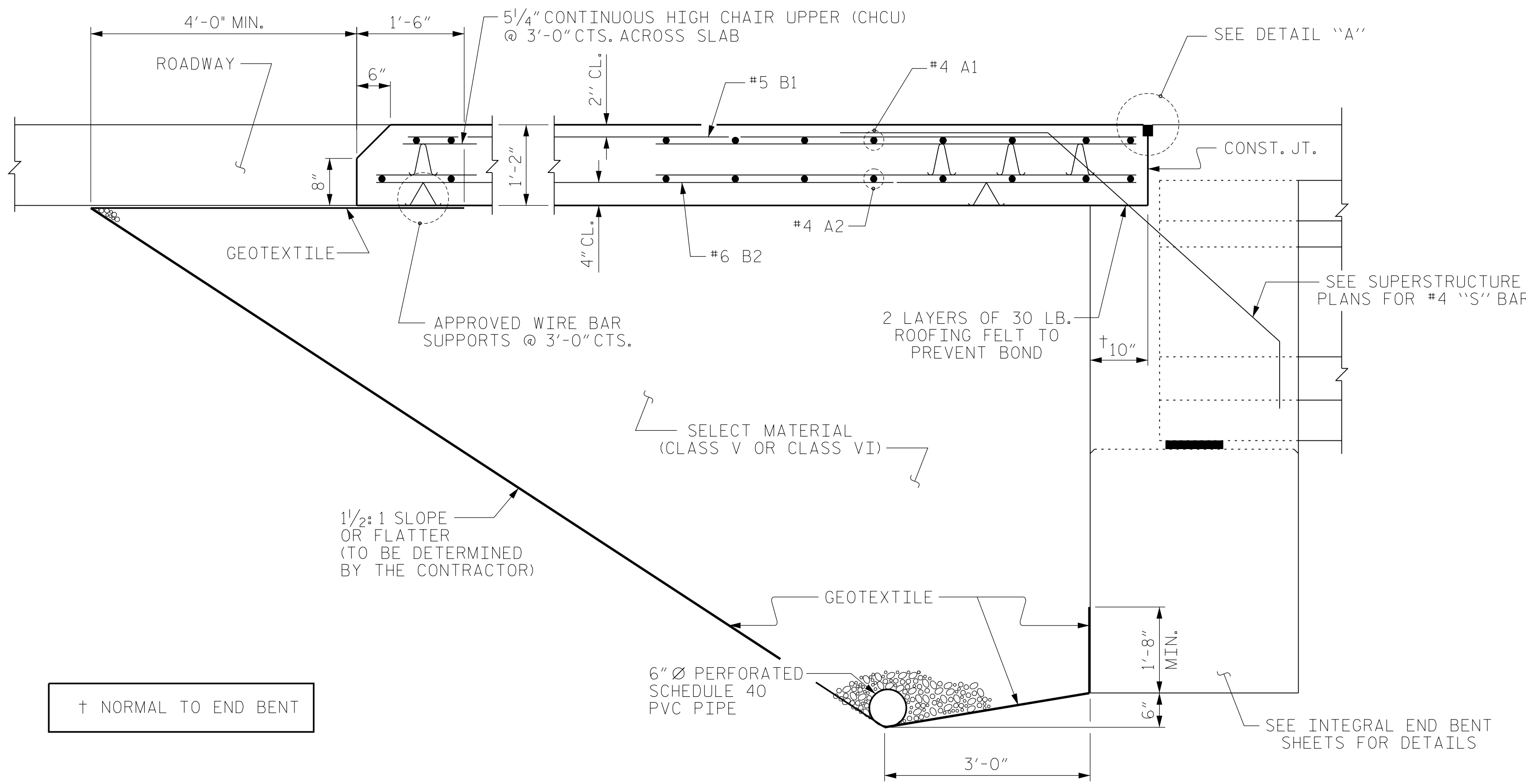
AREA BETWEEN THE WINGWALL AND APPROACH SLAB SHALL BE GRADED TO DRAIN THE WATER AWAY FROM THE FILL FACE OF THE BRIDGE AND SHALL BE PAVED. SEE ROADWAY PLANS.

THE JOINT OPENING AT THE APPROACH SLAB/DECK INTERFACE SHALL BE SAWED NO MORE THAN 12 HOURS AFTER THE APPROACH SLAB IS CAST. THE JOINT SHALL BE CLEANED OF ALL DEBRIS BEFORE THE SEALANT IS APPLIED. THE JOINT SEALER MATERIAL SHALL CONFORM TO THE REQUIREMENTS OF SECTION 1028-3 OF THE STANDARD SPECIFICATIONS.

AT THE CONTRACTORS OPTION, "TYPE A - ALTERNATE APPROACH FILL" IN LIEU OF "TYPE I - STANDARD APPROACH FILL" MAY BE CONSTRUCTED AT NO ADDITIONAL COST TO THE DEPARTMENT. SEE SHEET 2 OF 2 FOR DETAILS AND NOTES.

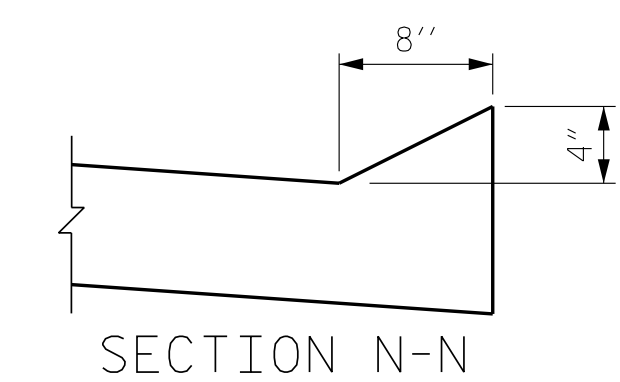
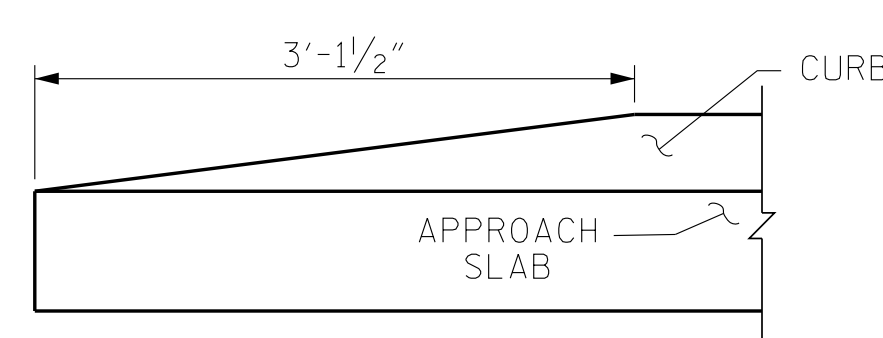
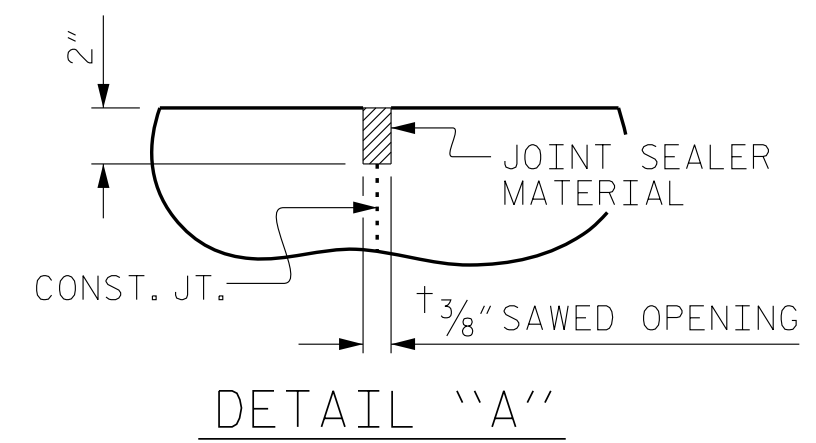
BILL OF MATERIAL						BILL OF MATERIAL					
@ END BENT NO. 1 -STAGE I						@ END BENT NO. 2 -STAGE I					
BAR	NO.	SIZE	TYPE	LENGTH	WEIGHT	BAR	NO.	SIZE	TYPE	LENGTH	WEIGHT
* A1	52	#4	STR	27'-7"	958	* A1	52	#4	STR	27'-7"	958
A2	52	#4	STR	27'-4"	949	A2	52	#4	STR	27'-4"	949
* B1	102	#5	STR	24'-8"	2624	* B1	102	#5	STR	24'-8"	2624
B2	102	#6	STR	24'-2"	3702	B2	102	#6	STR	24'-2"	3702
REINFORCING STEEL				LBS.	4651	REINFORCING STEEL				LBS.	4651
* EPOXY COATED REINFORCING STEEL				LBS.	3582	* EPOXY COATED REINFORCING STEEL				LBS.	3582
CLASS AA CONCRETE				C. Y.	55.3	CLASS AA CONCRETE				C. Y.	55.3
SLAB AND CURB				C. Y.	55.3	SLAB AND CURB				C. Y.	55.3

BILL OF MATERIAL						BILL OF MATERIAL					
@ END BENT NO. 1 -STAGE II						@ END BENT NO. 2 -STAGE II					
BAR	NO.	SIZE	TYPE	LENGTH	WEIGHT	BAR	NO.	SIZE	TYPE	LENGTH	WEIGHT
* A3	52	#4	STR	22'-11"	796	* A3	52	#4	STR	22'-11"	796
A4	52	#4	STR	22'-9"	790	A4	52	#4	STR	22'-9"	790
* B3	88	#5	STR	24'-8"	2264	* B3	88	#5	STR	24'-8"	2264
B4	88	#6	STR	24'-2"	3194	B4	88	#6	STR	24'-2"	3194
* T1	4	#4	STR	11'-0"	29	* T5	4	#4	STR	7'-6"	20
* T2	4	#4	STR	10'-6"	28	* T6	4	#4	STR	7'-3"	19
* T3	4	#4	STR	10'-0"	27	* T7	4	#4	STR	7'-1"	19
* T4	4	#4	STR	9'-6"	25	* T8	4	#4	STR	6'-11"	18
* M1	8	#4	STR	24'-2"	129	* M1	6	#4	STR	24'-2"	97
REINFORCING STEEL				LBS.	3984	REINFORCING STEEL				LBS.	3984
* EPOXY COATED REINFORCING STEEL				LBS.	3298	* EPOXY COATED REINFORCING STEEL				LBS.	3233
CLASS AA CONCRETE				C. Y.	47.6	CLASS AA CONCRETE				C. Y.	47.6
SLAB AND CURB				C. Y.	47.6	SLAB AND CURB				C. Y.	47.6
CONCRETE MEDIAN				C. Y.	4.0	CONCRETE MEDIAN				C. Y.	2.9
TOTAL				C. Y.	51.6	TOTAL				C. Y.	50.5



SECTION THRU SLAB
(TYPE I - STANDARD APPROACH FILL)

SPLICE LENGTHS		
BAR SIZE	EPOXY COATED	UNCOATED
#4	2'-0"	1'-9"
#5	2'-6"	2'-2"
#6	3'-10"	2'-7"



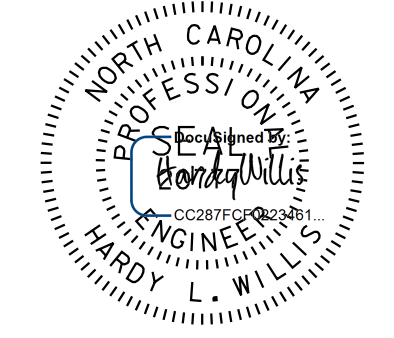
END OF CURB WITHOUT SHOULDER BERM GUTTER

V&M
Vaughn & Melton
Consulting Engineers

Asheville, North Carolina
919-977-9455

Boone, NC 828-355-9933
Tri-Cities, TN 423-467-8401
Knoxville, TN 865-546-5800
Spartanburg, SC 864-574-4775
Charleston, SC 843-974-5650
Milledgeboro, KY 606-248-6600
Charlotte, NC 704-357-0488
Atlanta, GA 770-627-3590

Copyright © 2006 Vaughn & Melton, Inc. All Rights Reserved



7/17/2018 9:22:03 AM EDT

DOCUMENT NOT CONSIDERED FINAL UNLESS ALL SIGNATURES COMPLETED

PROJECT NO. R-3825B
JOHNSTON COUNTY
STATION: 64+20.00 -L-

SHEET 2 OF 4

STATE OF NORTH CAROLINA
DEPARTMENT OF TRANSPORTATION
RALEIGH

STANDARD
BRIDGE APPROACH SLAB
FOR INTEGRAL ABUTMENT
WITH FLEXIBLE PAVEMENT

REVISIONS						SHEET NO.	
NO.	BY:	DATE:	NO.	BY:	DATE:	S-57	
1			3			TOTAL SHEETS	59
2			4				

ASSEMBLED BY : WDC	DATE : 12/2017
CHECKED BY : AGO	DATE : 12/2017
DRAWN BY : TLA 10/05	REV. 12/21/11 MAA/GM
CHECKED BY : GM 5/06	REV. 6/13 MAA/GM
	REV. 12/17 MAA/THC