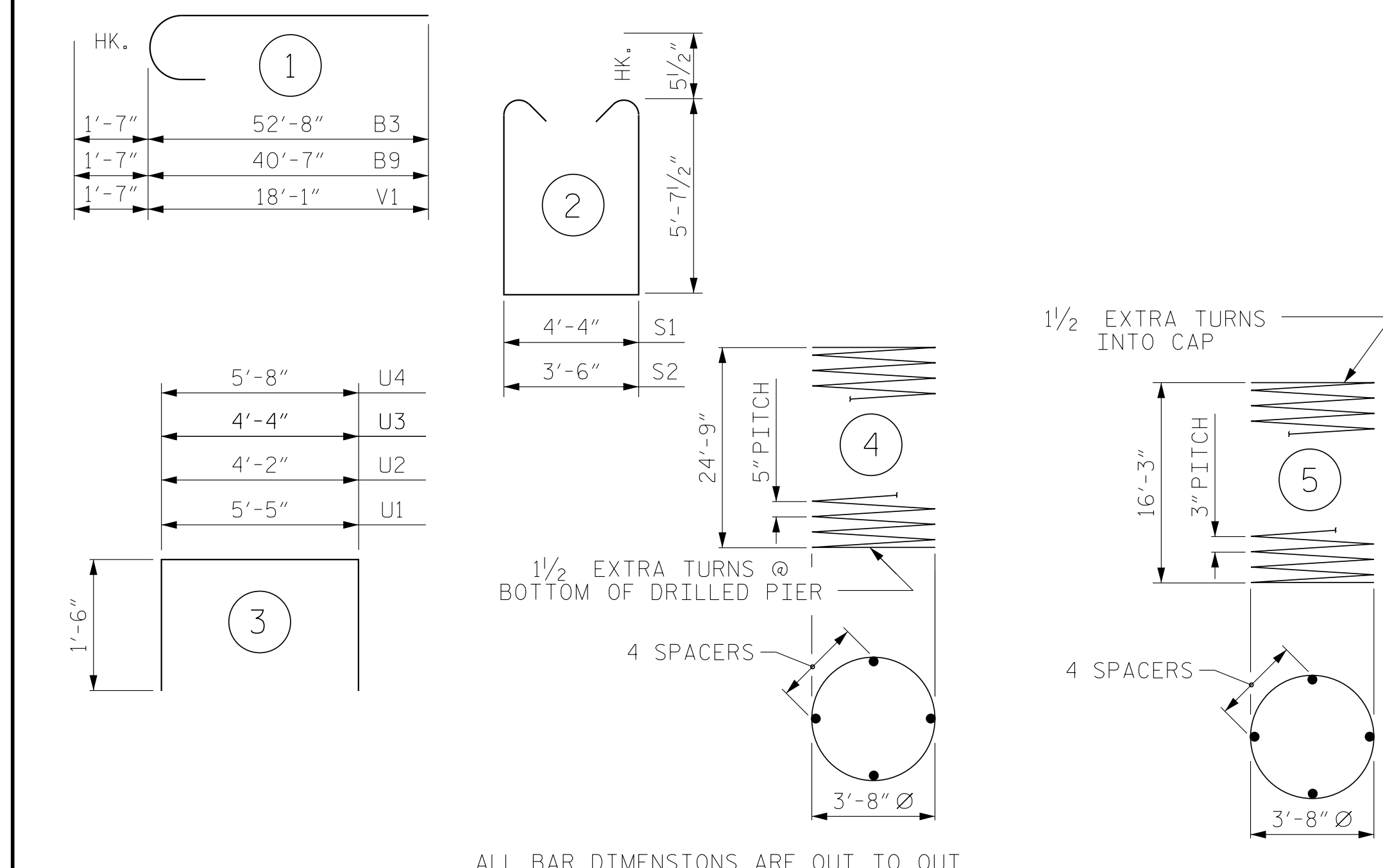


BAR TYPES



ALL BAR DIMENSIONS ARE OUT TO OUT

BILL OF MATERIAL

BENT 2 - STAGE I

BAR	NO.	SIZE	TYPE	LENGTH	WEIGHT
B1	7	#11	STR	52'-8"	1959
B2	10	#5	STR	54'-2"	565
B3	7	#11	1	54'-3"	2018
B4	7	#4	STR	34'-9"	162
B5	7	#4	STR	15'-7"	73
B6	11	#4	STR	4'-4"	32
M1	48	#11	STR	35'-2"	8968
S1	18	#5	2	16'-6"	310
S2	150	#5	2	15'-8"	2451
U1	4	#4	3	8'-5"	22
U2	5	#4	3	7'-2"	24
U3	62	#4	3	7'-4"	304
V1	48	#11	1	19'-8"	5015
REINFORCING STEEL					21,903 LBS.
SP-1	3	*	4	693'-2"	2169
SP-2	3	**	5	757'-7"	1518
SPIRAL COLUMN REINFORCING STEEL					3687 LBS.
* THE SP-1 SPIRAL REINFORCING STEEL SHALL BE W31 OR D-31 COLD DRAWN WIRE OR #5 PLAIN OR DEFORMED BAR					
** THE SP-2 SPIRAL REINFORCING STEEL SHALL BE W20 OR D-20 COLD DRAWN WIRE OR #4 PLAIN OR DEFORMED BAR					

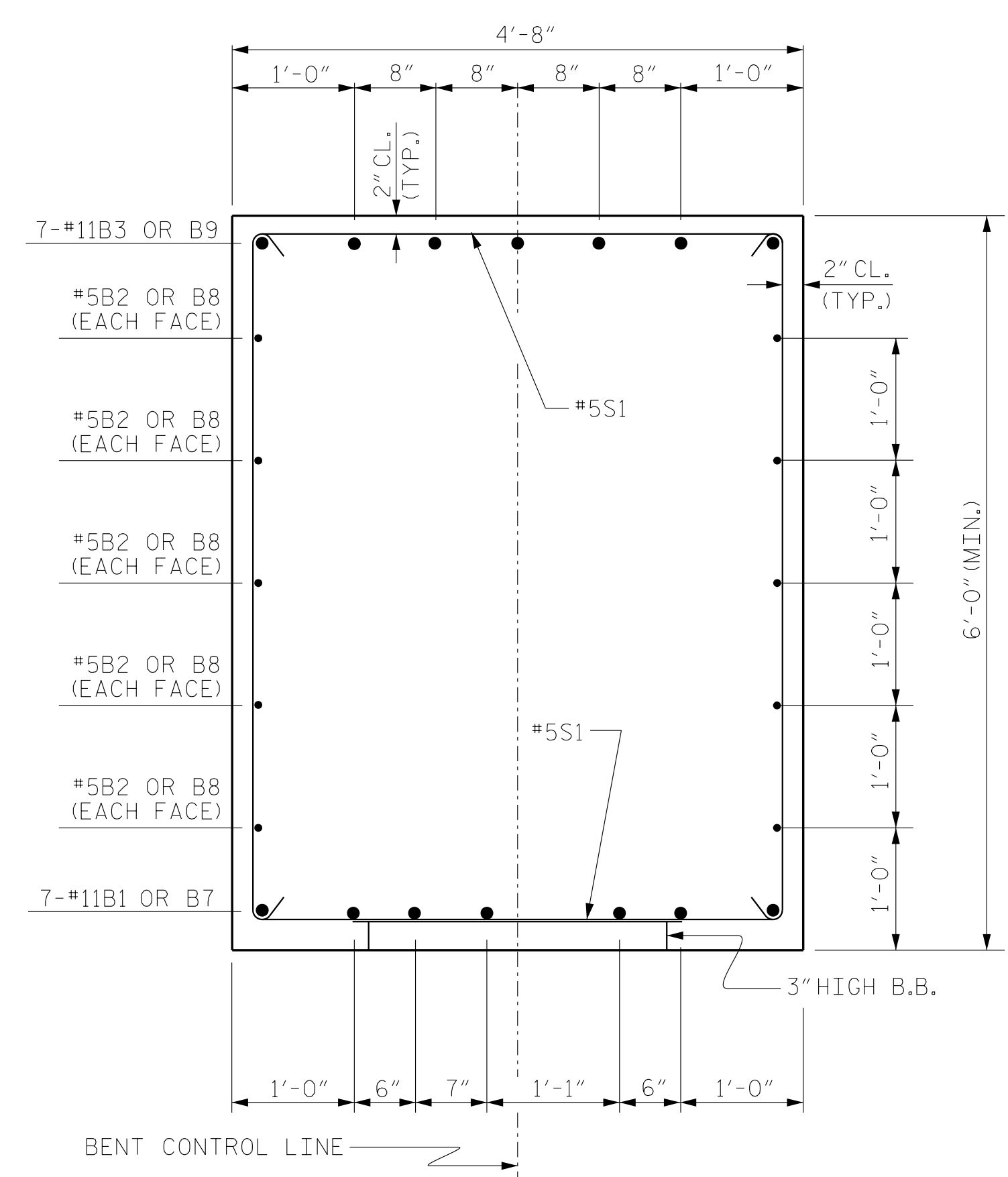
BILL OF MATERIAL

BENT 2 - STAGE II

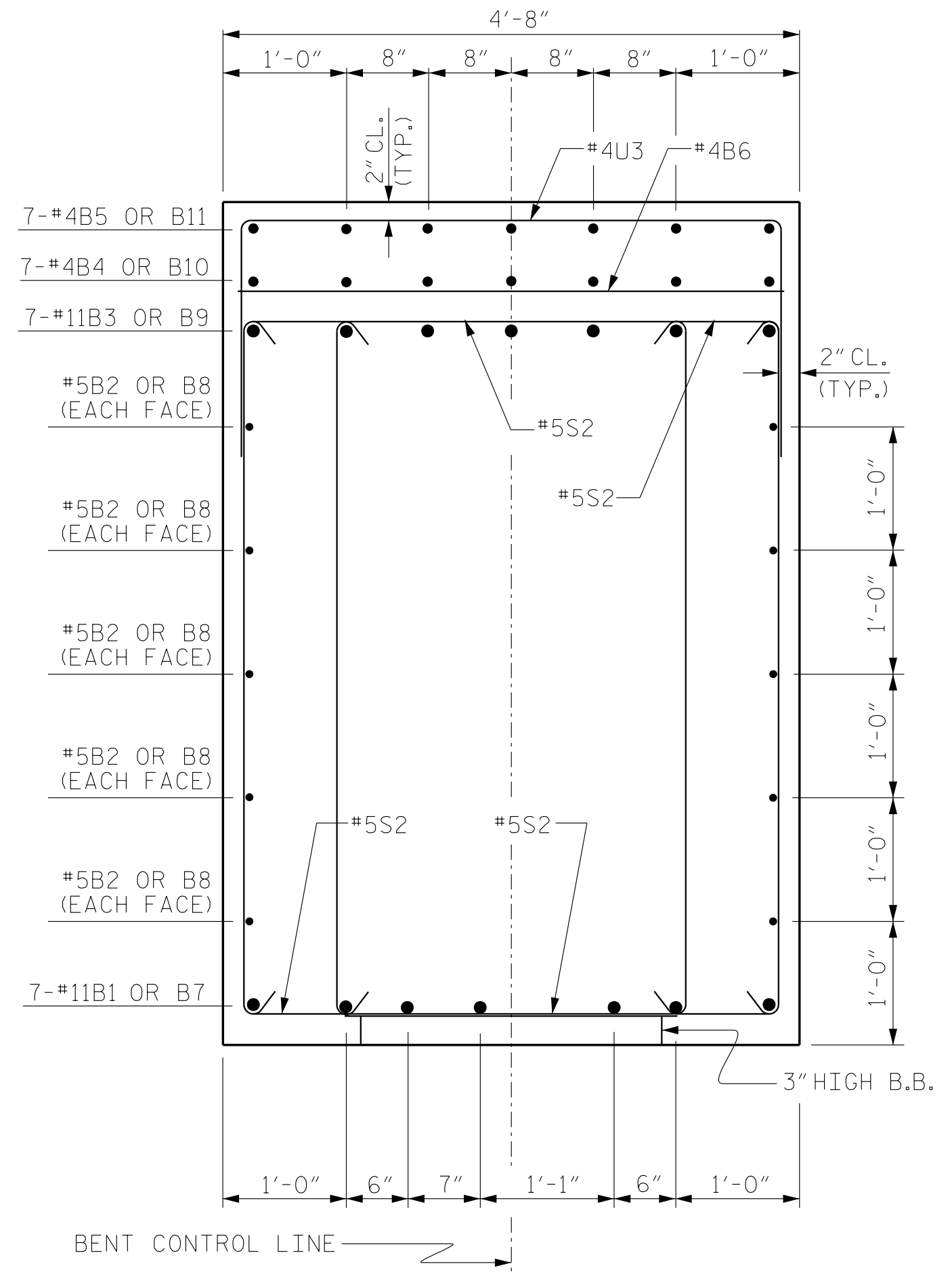
BAR	NO.	SIZE	TYPE	LENGTH	WEIGHT
B6	3	#4	STR	4'-4"	9
B7	7	#11	STR	40'-7"	1509
B8	10	#5	STR	40'-7"	423
B9	7	#11	1	42'-2"	1568
B10	7	#4	STR	23'-0"	108
B11	7	#4	STR	14'-4"	67
M1	32	#11	STR	35'-2"	5979
S1	23	#5	2	16'-6"	396
S2	86	#5	2	15'-8"	1405
U2	5	#4	3	7'-2"	24
U3	51	#4	3	7'-4"	250
U4	4	#4	3	8'-8"	23
V1	32	#11	1	19'-8"	3344
REINFORCING STEEL					15,105 LBS.
SP-1	2	*	4	693'-2"	1446
SP-2	2	**	5	757'-7"	1012
SPIRAL COLUMN REINFORCING STEEL					2458 LBS.
* THE SP-1 SPIRAL REINFORCING STEEL SHALL BE W31 OR D-31 COLD DRAWN WIRE OR #5 PLAIN OR DEFORMED BAR					
** THE SP-2 SPIRAL REINFORCING STEEL SHALL BE W20 OR D-20 COLD DRAWN WIRE OR #4 PLAIN OR DEFORMED BAR					

CLASS A CONCRETE BREAKDOWN		CLASS A CONCRETE BREAKDOWN	
POUR #2 (COLUMNS)	22.3 C.Y.	POUR #2 (COLUMNS)	14.9 C.Y.
POUR #3 (CAP)	57.5 C.Y.	POUR #3 (CAP)	45.7 C.Y.
TOTAL CLASS A CONCRETE	79.8 C.Y.	TOTAL CLASS A CONCRETE	60.6 C.Y.

DRILLED PIERS:		DRILLED PIERS:	
DRILLED PIER CONCRETE POUR #1 (DRILLED PIERS)	44.6 C.Y.	DRILLED PIER CONCRETE POUR #1 (DRILLED PIERS)	29.7 C.Y.
4'-6" Ø DRILLED PIERS NOT IN SOIL	43.20 LIN. FT.	4'-6" Ø DRILLED PIERS NOT IN SOIL	28.80 LIN. FT.
4'-6" Ø DRILLED PIERS IN SOIL	32.55 LIN. FT.	4'-6" Ø DRILLED PIERS IN SOIL	21.70 LIN. FT.
PERMANENT STEEL CASING FOR 4'-6" Ø DRILLED PIER	40.77 LIN. FT.	PERMANENT STEEL CASING FOR 4'-6" Ø DRILLED PIER	20.18 LIN. FT.
CSL TUBES	321 LIN. FT.	CSL TUBES	214 LIN. FT.

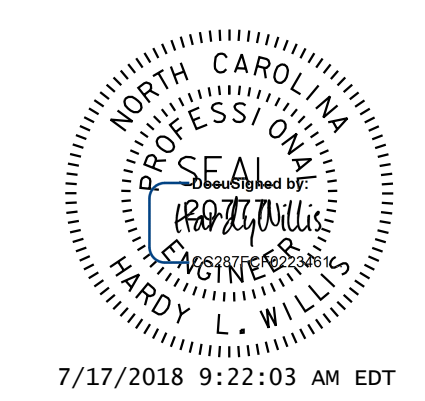


SECTION A-A



SECTION B-B

(SHOWING STIRRUP PAIRS)



DOCUMENT NOT CONSIDERED FINAL UNLESS ALL SIGNATURES COMPLETED

PROJECT NO. R-3825B
JOHNSTON COUNTY
STATION: 64+20.00 -L-

SHEET 4 OF 4

STATE OF NORTH CAROLINA
DEPARTMENT OF TRANSPORTATION
RALEIGH

SUBSTRUCTURE
BENT 2 DETAILS

REVISIONS					
NO.	BY:	DATE:	NO.	BY:	DATE:
1			3		
2			4		

SHEET NO. S-50
TOTAL SHEETS 59

DWN. BY: WDC DATE: 7/2017
CHKD. BY: ACO DATE: 12/2017
DES. EGR. OF RECORD: ACO DATE: 12/2017

V&M
Vaughn & Melton
Consulting Engineers

Asheville, NC
919-971-9455

Charlotte, NC
704-357-0488

Atlanta, GA
770-627-3590

Boone, NC
828-355-9933

Tri-Cities, TN
423-467-8401

Knoxville, TN
865-546-5800

Spartanburg, SC
864-574-4775

Charleston, SC
843-974-5650

Middlesboro, KY
606-248-6600

Copyright © 2006 Vaughn & Melton, Inc. All Rights Reserved