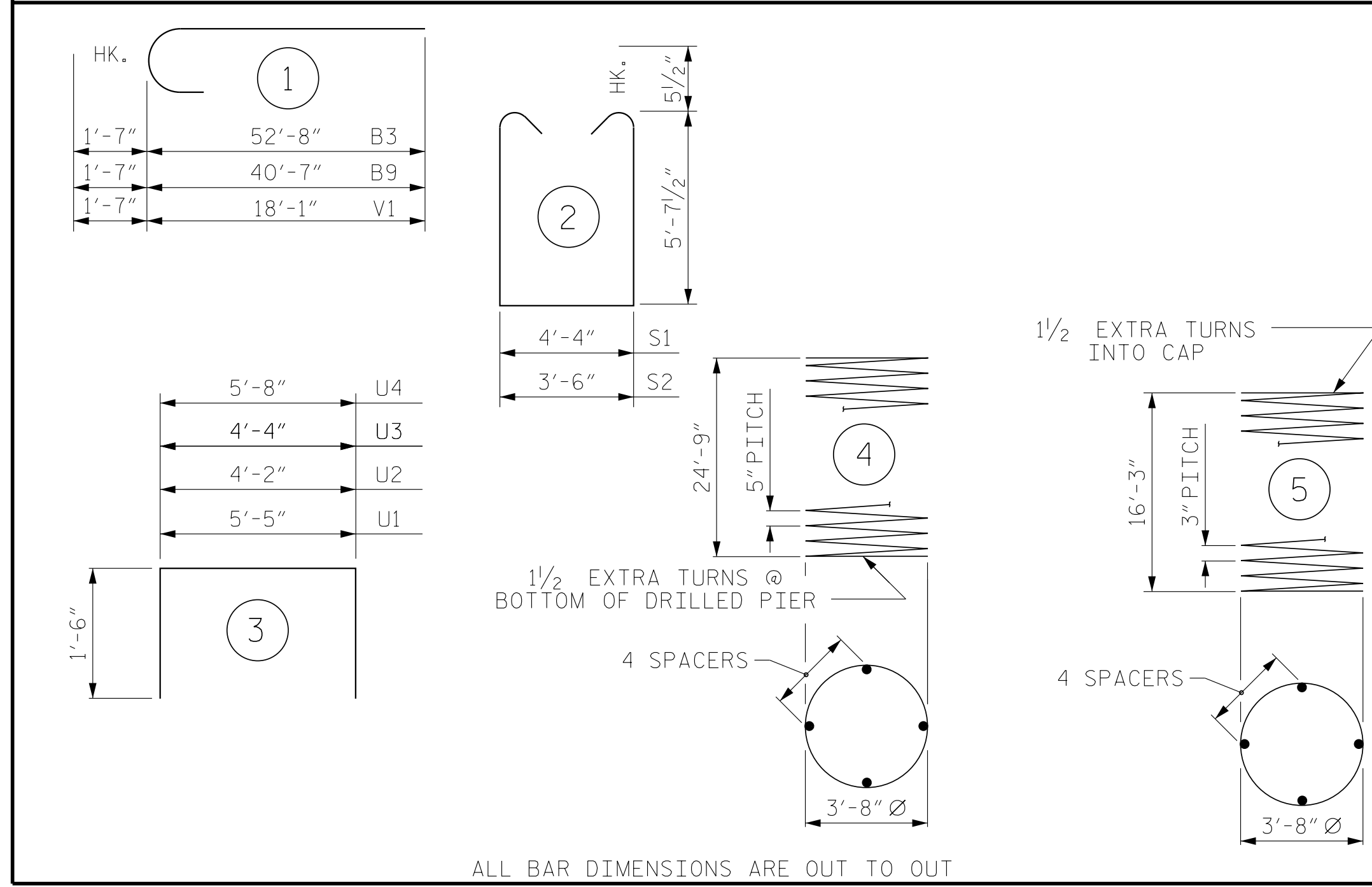


BAR TYPES



ALL BAR DIMENSIONS ARE OUT TO OUT

BILL OF MATERIAL

BENT 1 - STAGE I

BAR	NO.	SIZE	TYPE	LENGTH	WEIGHT
B1	7	#11	STR	52'-8"	1959
B2	10	#5	STR	54'-2"	565
B3	7	#11	1	54'-3"	2018
B4	7	#4	STR	34'-9"	162
B5	7	#4	STR	15'-7"	73
B6	11	#4	STR	4'-4"	32
M1	48	#11	STR	35'-2"	8968
S1	18	#5	2	16'-6"	310
S2	150	#5	2	15'-8"	2451
U1	4	#4	3	8'-5"	22
U2	5	#4	3	7'-2"	24
U3	62	#4	3	7'-4"	304
V1	48	#11	1	19'-8"	5015

REINFORCING STEEL 21,903 LBS.

BILL OF MATERIAL

BENT 1 - STAGE II

BAR	NO.	SIZE	TYPE	LENGTH	WEIGHT
B6	3	#4	STR	4'-4"	9
B7	7	#11	STR	40'-7"	1509
B8	10	#5	STR	40'-7"	423
B9	7	#11	1	42'-2"	1568
B10	7	#4	STR	23'-0"	108
B11	7	#4	STR	14'-4"	67
M1	32	#11	STR	35'-2"	5979
S1	23	#5	2	16'-6"	396
S2	86	#5	2	15'-8"	1405
U2	5	#4	3	7'-2"	24
U3	51	#4	3	7'-4"	250
U4	4	#4	3	8'-8"	23
V1	32	#11	1	19'-8"	3344

REINFORCING STEEL 15,105 LBS.

SP-1	3	*	4	693'-2"	2169
SP-2	3	**	5	757'-7"	1518

SPIRAL COLUMN REINFORCING STEEL 3687 LBS.

* THE SP-1 SPIRAL REINFORCING STEEL SHALL BE W31 OR D-31 COLD DRAWN WIRE OR #5 PLAIN OR DEFORMED BAR
 ** THE SP-2 SPIRAL REINFORCING STEEL SHALL BE W20 OR D-20 COLD DRAWN WIRE OR #4 PLAIN OR DEFORMED BAR

SP-1	2	*	4	693'-2"	1446
SP-2	2	**	5	757'-7"	1012

SPIRAL COLUMN REINFORCING STEEL 2458 LBS.

* THE SP-1 SPIRAL REINFORCING STEEL SHALL BE W31 OR D-31 COLD DRAWN WIRE OR #5 PLAIN OR DEFORMED BAR
 ** THE SP-2 SPIRAL REINFORCING STEEL SHALL BE W20 OR D-20 COLD DRAWN WIRE OR #4 PLAIN OR DEFORMED BAR

CLASS A CONCRETE BREAKDOWN

POUR #2 (COLUMNS)	22.3 C.Y.
POUR #3 (CAP)	57.6 C.Y.
TOTAL CLASS A CONCRETE	79.9 C.Y.

CLASS A CONCRETE BREAKDOWN

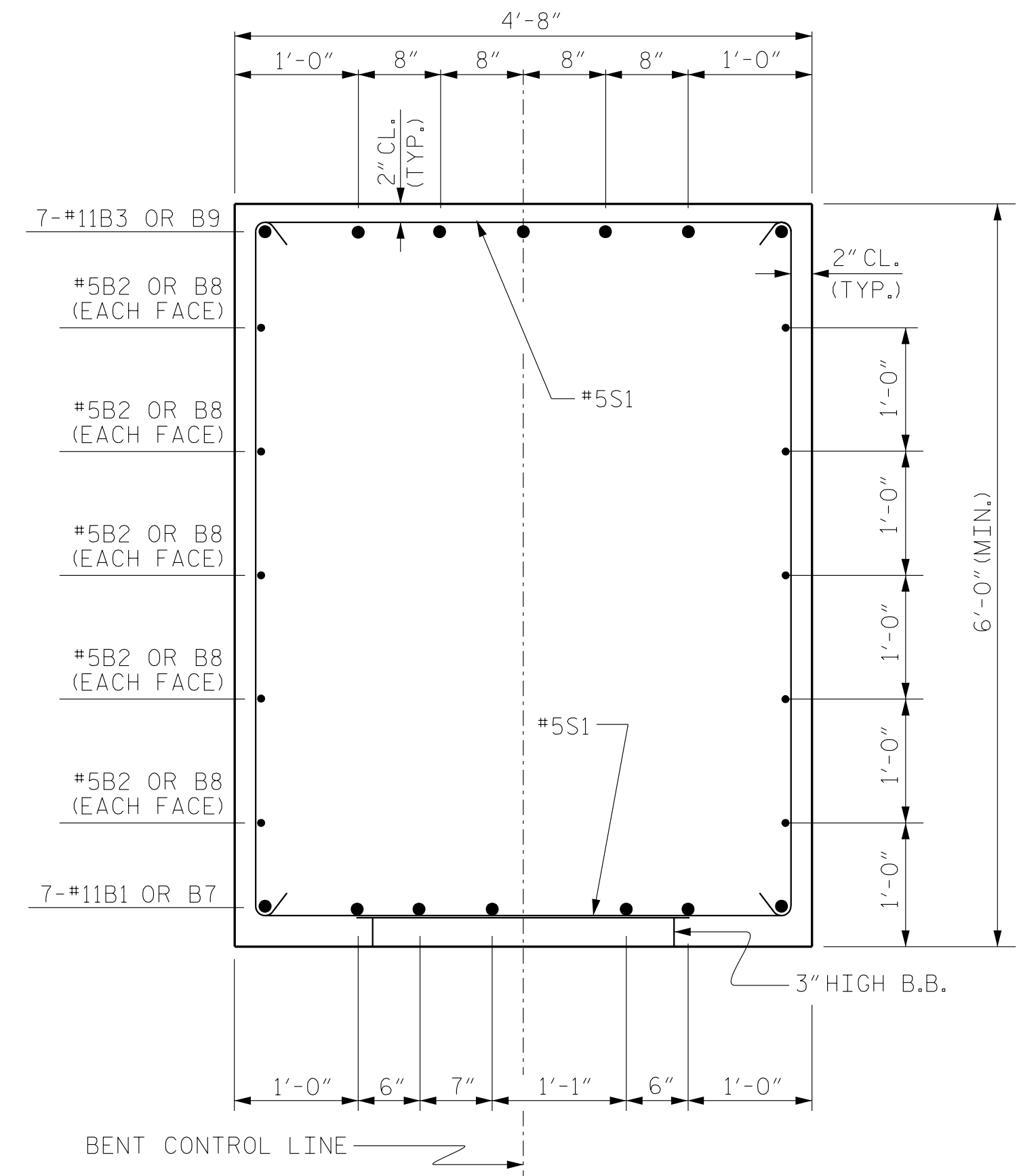
POUR #2 (COLUMNS)	14.9 C.Y.
POUR #3 (CAP)	45.8 C.Y.
TOTAL CLASS A CONCRETE	60.7 C.Y.

DRILLED PIERS:

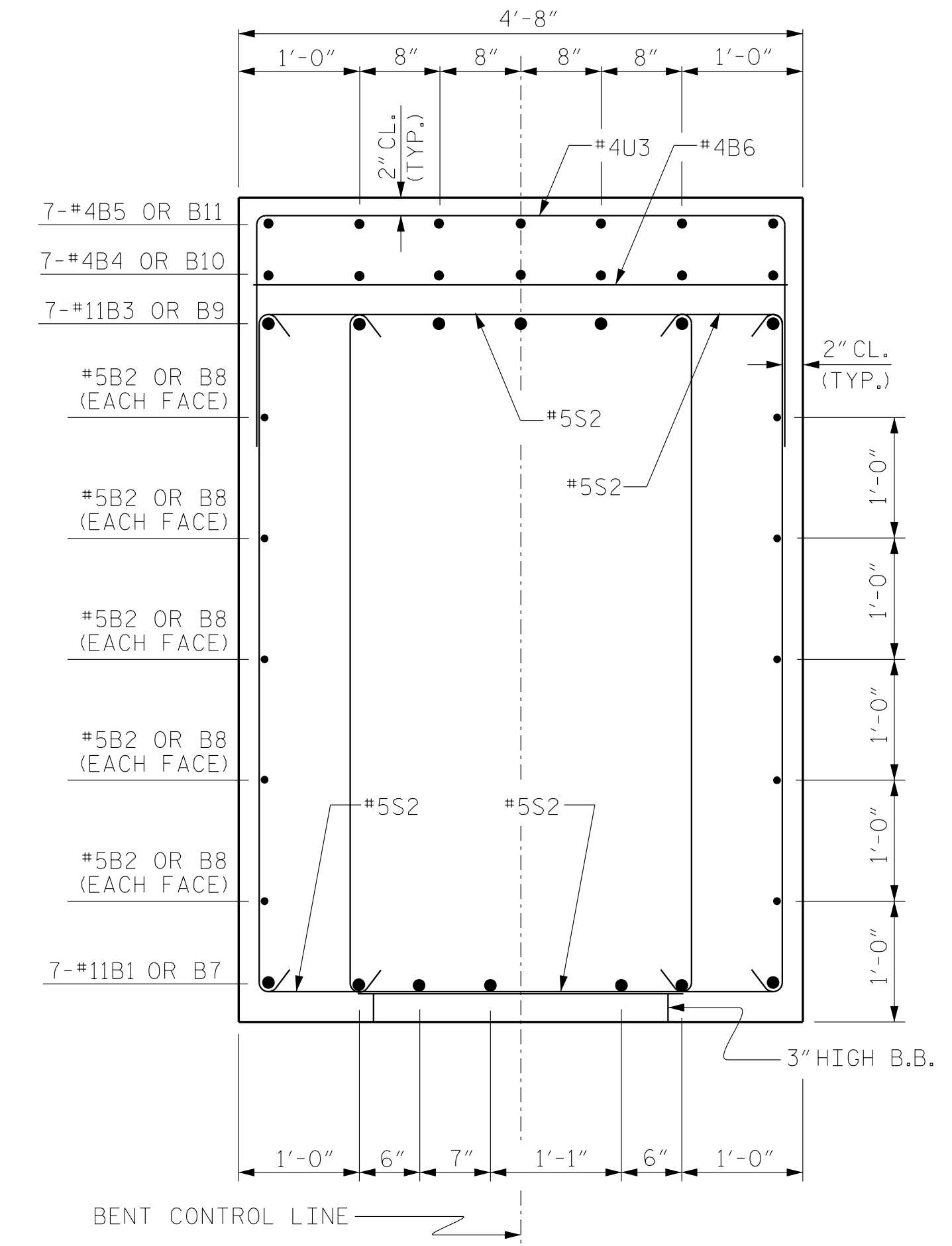
DRILLED PIER CONCRETE POUR #1 (DRILLED PIERS)	44.6 C.Y.
4'-6" Ø DRILLED PIERS NOT IN SOIL	43.20 LIN. FT.
4'-6" Ø DRILLED PIERS IN SOIL	32.55 LIN. FT.
PERMANENT STEEL CASING FOR 4'-6" Ø DRILLED PIER	42.42 LIN. FT.
CSL TUBES	321 LIN. FT.

DRILLED PIERS:

DRILLED PIER CONCRETE POUR #1 (DRILLED PIERS)	29.7 C.Y.
4'-6" Ø DRILLED PIERS NOT IN SOIL	28.80 LIN. FT.
4'-6" Ø DRILLED PIERS IN SOIL	21.70 LIN. FT.
PERMANENT STEEL CASING FOR 4'-6" Ø DRILLED PIER	22.18 LIN. FT.
CSL TUBES	214 LIN. FT.



SECTION A-A



SECTION B-B

(SHOWING STIRRUP PAIRS)



7/17/2018 9:22:03 AM EDT

DOCUMENT NOT CONSIDERED FINAL UNLESS ALL SIGNATURES COMPLETED

PROJECT NO. R-3825B
 JOHNSTON COUNTY
 STATION: 64+20.00 -L-

SHEET 4 OF 4

STATE OF NORTH CAROLINA
 DEPARTMENT OF TRANSPORTATION
 RALEIGH

SUBSTRUCTURE
 BENT 1 DETAILS

REVISIONS						SHEET NO.
NO.	BY:	DATE:	NO.	BY:	DATE:	S-46
1			3			TOTAL SHEETS
2			4			59

DWN. BY: WDC DATE: 7/2017
 CHKD. BY: ACO DATE: 12/2017
 DES. EGR. OF RECORD: ACO DATE: 12/2017

V&M
 Vaughn & Melton
 Consulting Engineers

Asheville, North Carolina
 828-253-2196

Boone, NC 828-355-9933
 Tri-Cities, TN 423-467-8401
 Knoxville, TN 865-546-5800
 Spar-tanburg, SC 864-574-4775
 Charleston, SC 843-974-5650
 Milledgeboro, KY 606-248-6600
 Raleigh, NC 919-977-9455
 Charlotte, NC 704-357-0488
 Atlanta, GA 770-627-3590

Copyright © 2006 Vaughn & Melton, Inc. All Rights Reserved