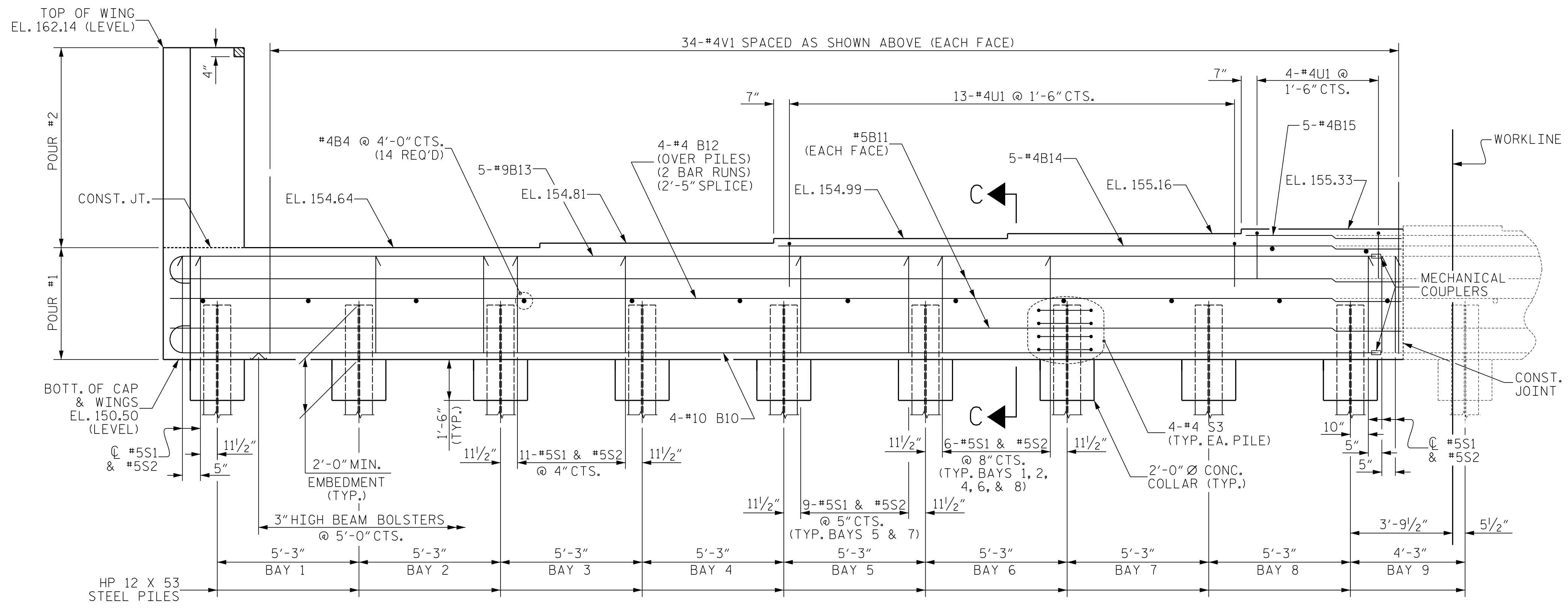


PLAN



ELEVATION

**NOTES**

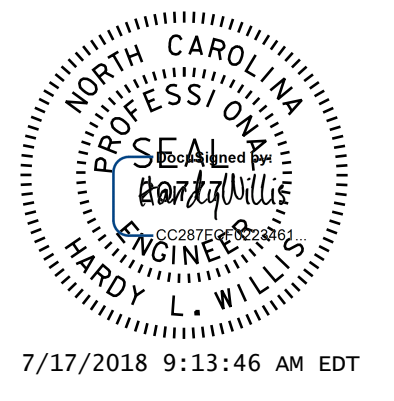
THE TOP SURFACE OF THE END BENT CAP, EXCEPT THE BEARING AREA, SHALL BE RAKED TO A DEPTH OF 1/4".

THE CONCRETE IN THE SHADED AREA OF THE WING SHALL BE POURED AFTER THE PARAPET IS CAST IF SLIP FORMING IS USED.

FOR SECTION C-C, SEE SHEET 4 OF 4.

FOR PILE SPLICE DETAILS, SEE SHEET 4 OF 4.

FOR WING DETAILS, SEE SHEET 3 OF 4.



DOCUMENT NOT CONSIDERED FINAL UNLESS ALL SIGNATURES COMPLETED

**V&M**  
Vaughn & Melton  
Consulting Engineers

Asheville, NC  
Raleigh, NC  
Charlotte, NC  
Atlanta, GA

Boone, NC  
Tri-Cities, TN  
Knoxville, TN  
Spartanburg, SC  
Charleston, SC  
Middleboro, KY

Copyright © 2006 Vaughn & Melton, Inc. All Rights Reserved

PROJECT NO. R-3825B  
JOHNSTON COUNTY  
STATION: 64+20.00 -L-

SHEET 2 OF 4

STATE OF NORTH CAROLINA  
DEPARTMENT OF TRANSPORTATION  
RALEIGH

SUBSTRUCTURE  
END BENT 1  
(STAGE II)

DWN. BY: WDC DATE: 7/2017  
CHKD. BY: ACO DATE: 12/2017  
DES. EGR. OF RECORD: ACO DATE: 12/2017

REVISIONS						SHEET NO.
NO.	BY:	DATE:	NO.	BY:	DATE:	S-40
1			3			TOTAL SHEETS
2			4			59