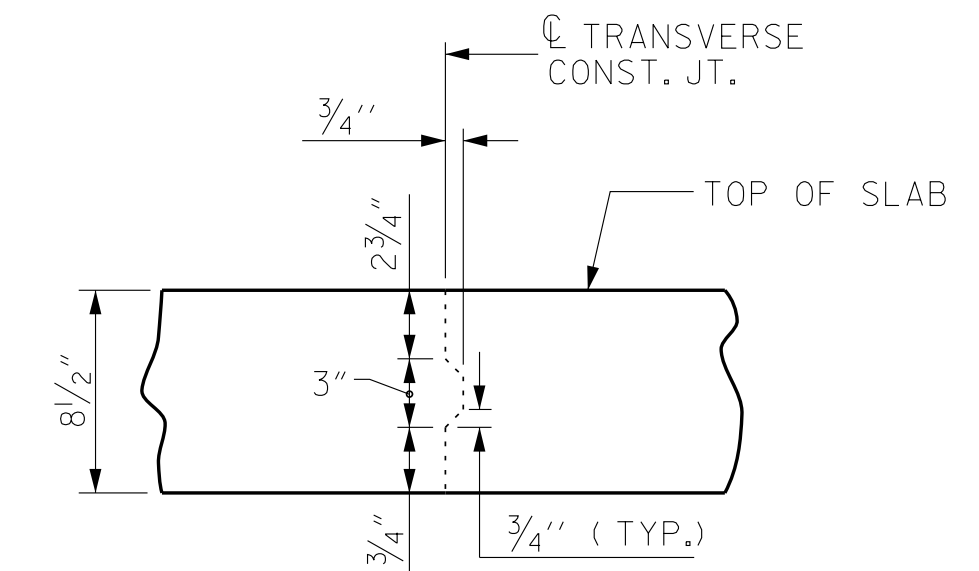


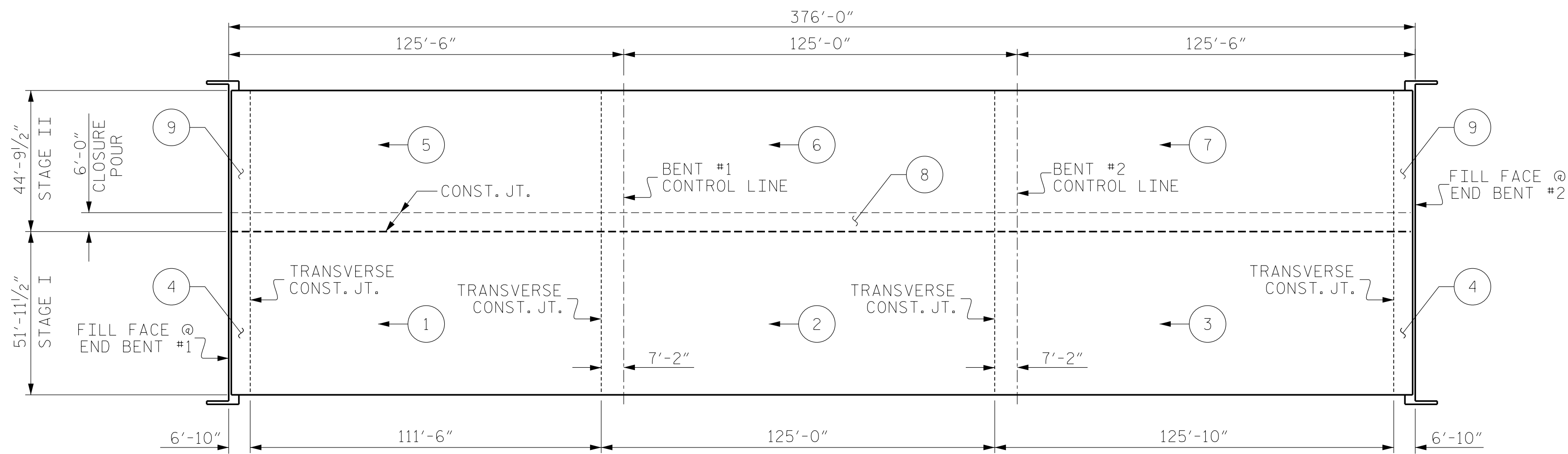
**LAYOUT FOR COMPUTING AREA  
REINFORCED CONCRETE DECK SLAB**

(STAGE I = 19,536 SQ. FT.)  
(STAGE II = 16,842 SQ. FT.)  
(TOTAL = 36,378 SQ. FT.)

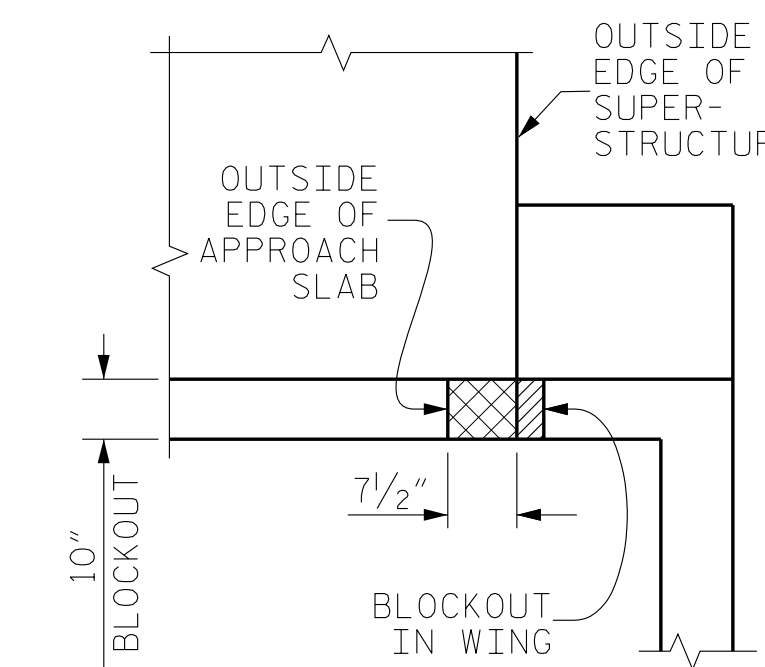


**TRANSVERSE CONSTRUCTION JOINT DETAIL**

NOTE: REINFORCING STEEL IN SLAB NOT SHOWN.  
LONGITUDINAL REINFORCING STEEL SHALL BE  
CONTINUOUS THRU JOINT

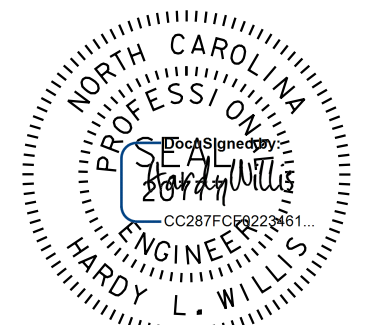


**POURING SEQUENCE**



**CORNER DETAIL**

CONCRETE SHALL BE POURED IN THE  
CROSSHATCHED AREA TO MATCH THE  
TOP OF END BENT WING ELEVATIONS.  
UNLESS OTHERWISE DIRECTED BY THE  
ENGINEER, THE CONCRETE IN THESE  
AREAS SHALL BE PLACED AT THE SAME  
TIME THE BLOCKOUTS IN THE END BENT  
WINGS ARE POURED AS NOTED ON SHEET 1  
OF "INTEGRAL END BENT 1" AND SHEET 1  
OF "INTEGRAL END BENT 2" SHEETS.



7/17/2018 9:13:46 AM EDT

DOCUMENT NOT CONSIDERED  
FINAL UNLESS ALL  
SIGNATURES COMPLETED

**V&M**  
Vaughn & Melton  
Consulting Engineers

Asheville, North Carolina  
828-253-2796

- Boone, NC 828-355-9933
- Tri-Cities, TN 423-467-8401
- Knoxville, TN 865-546-5800
- Spartanburg, SC 864-574-4775
- Charleston, SC 843-974-5650
- Milledgeboro, KY 606-248-6600
- Raleigh, NC 919-977-9455
- Charlotte, NC 704-357-0488
- Atlanta, GA 770-627-3590

Copyright © 2006 Vaughn & Melton, Inc. All Rights Reserved

PROJECT NO. R-3825B  
JOHNSTON COUNTY  
STATION: 64+20.00 -L-

STATE OF NORTH CAROLINA  
DEPARTMENT OF TRANSPORTATION  
RALEIGH

SUPERSTRUCTURE  
POURING SEQUENCE  
AND  
DECK SLAB AREA

REVISIONS						SHEET NO.
NO.	BY:	DATE:	NO.	BY:	DATE:	S-38
1			3			TOTAL SHEETS
2			4			59

DRAWN BY: WDC DATE: 7-2017  
CHECKED BY: ACO DATE: 12-2017  
DESIGN ENGINEER OF RECORD: ACO DATE: 12-2017

IN EACH STAGE, POUR 2 OR 5 SHALL NOT BE STARTED UNTIL BOTH  
ADJACENT 1 OR 4 POURS REACH A MINIMUM STRENGTH OF 3000 PSI.

**OPTIONAL  
POURING SEQUENCE**

