

SECTION THRU MEDIAN

BILL OF MATERIAL					
CONCRETE MEDIAN					
BAR	NO.	SIZE	TYPE	LENGTH	WEIGHT
*B7	84	#4	STR	28'-7"	1604
*G1	2	#4	STR	8'-9"	12
*G2	2	#4	STR	8'-6"	11
*G3	221	#4	STR	8'-5"	1243
*G4	5	#4	STR	8'-2"	27
*G5	5	#4	STR	8'-0"	27
*G6	5	#4	STR	7'-9"	26
*G7	5	#4	STR	7'-7"	25
*G8	5	#4	STR	7'-4"	24
* EPOXY COATED REINF. STEEL				2,999	LBS.
CLASS AA CONCRETE				52.0	C.Y.

NOTES

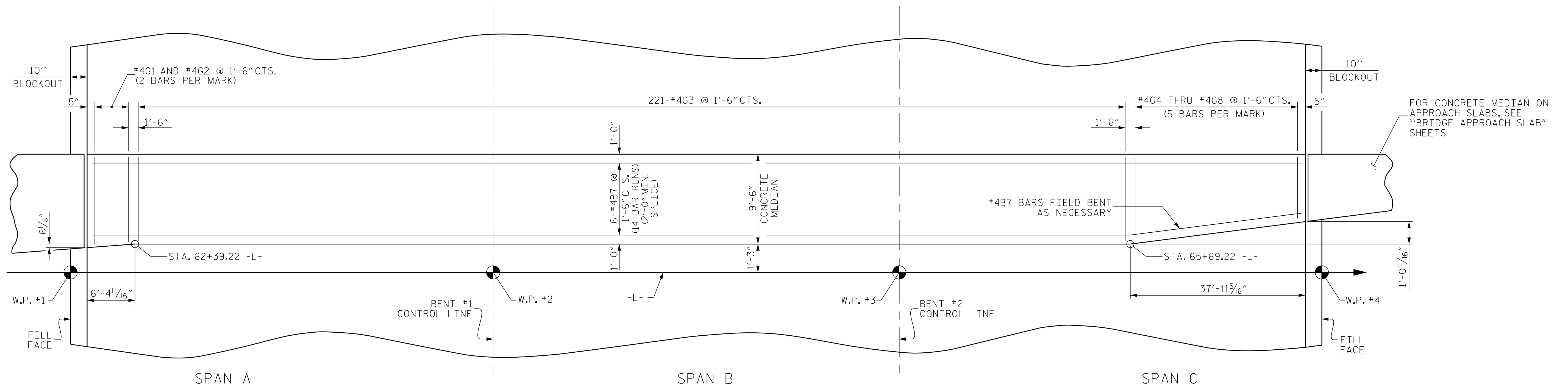
CONCRETE MEDIAN IN A CONTINUOUS UNIT SHALL NOT BE CAST UNTIL ALL SLAB CONCRETE IN THE UNIT HAS BEEN CAST AND HAS REACHED A MINIMUM COMPRESSIVE STRENGTH OF 3,000 PSI.

ALL REINFORCING STEEL IN THE CONCRETE MEDIAN SHALL BE EPOXY COATED.

GROOVED CONTRACTION JOINTS, 1/2" IN DEPTH, SHALL BE TOOLED IN ALL EXPOSED FACES OF THE MEDIAN AND IN ACCORDANCE WITH ARTICLE 825-10(B) OF THE STANDARD SPECIFICATIONS. A CONTRACTION JOINT SHALL BE LOCATED AT EACH THIRD POINT BETWEEN MEDIAN EXPANSION JOINTS. ONLY ONE CONTRACTION JOINT IS REQUIRED AT MIDPOINT OF MEDIAN SEGMENTS LESS THAN 20 FEET IN LENGTH AND NO CONTRACTION JOINTS ARE REQUIRED FOR THOSE SEGMENTS LESS THAN 10 FEET IN LENGTH.

FOR CONCRETE MEDIAN REINFORCING STEEL AND CONCRETE QUANTITIES, SEE SUPERSTRUCTURE "BILL OF MATERIAL".

THE COST FOR MATERIALS AND PLACEMENT OF THE CONCRETE MEDIAN SHALL BE INCLUDED IN THE PAY ITEM FOR "REINFORCED CONCRETE DECK SLAB".



PLAN

PROJECT NO. R-3825B  
JOHNSTON COUNTY  
 STATION: 64+20.00 -L-

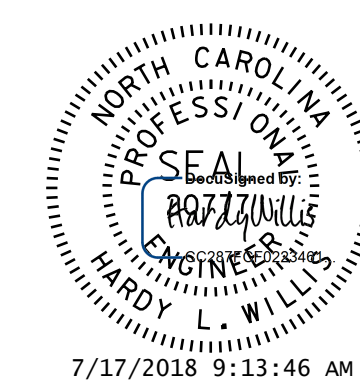
DRAWN BY : WDC DATE : 7-2017  
 CHECKED BY : ACO DATE : 12-2017

**V&M**  
 Vaughn & Melton  
 Consulting Engineers

Asheville,  
 North Carolina  
 828-253-2796

Boone, NC 828-355-9933  
 Tri-Cities, TN 423-467-8401  
 Knoxville, TN 865-546-5800  
 Spartanburg, SC 864-574-4775  
 Charleston, SC 843-974-5650  
 Middlesboro, KY 606-248-6600  
 Raleigh, NC 919-977-9455  
 Charlotte, NC 704-357-0488  
 Atlanta, GA 770-627-3550

Copyright © 2006 Vaughn & Melton, Inc. All Rights Reserved



7/17/2018 9:13:46 AM EDT

DOCUMENT NOT CONSIDERED  
 FINAL UNLESS ALL  
 SIGNATURES COMPLETED

STATE OF NORTH CAROLINA  
 DEPARTMENT OF TRANSPORTATION  
 RALEIGH

SUPERSTRUCTURE  
 CONCRETE MEDIAN

REVISIONS						SHEET NO.
NO.	BY:	DATE:	NO.	BY:	DATE:	S-36
1			3			TOTAL SHEETS
2			4			59