

1'-2" X 2'-8" CONCRETE PARAPET DETAILS

NOTES

THE PARAPET IN A CONTINUOUS UNIT SHALL NOT BE CAST UNTIL ALL SLAB CONCRETE IN THE UNIT HAS BEEN CAST AND HAS REACHED A MINIMUM COMPRESSIVE STRENGTH OF 3,000 PSI.

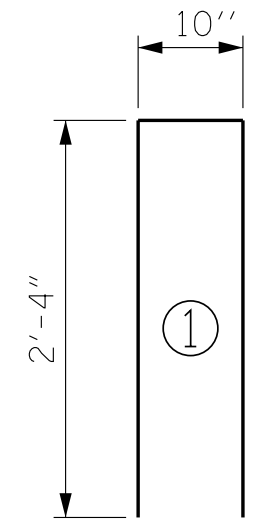
ALL REINFORCING STEEL IN THE PARAPET SHALL BE EPOXY COATED.

GROOVED CONTRACTION JOINTS, 1/2" IN DEPTH, SHALL BE TOOLED IN ALL EXPOSED FACES OF THE PARAPET AND IN ACCORDANCE WITH ARTICLE 825-10(B) OF THE STANDARD SPECIFICATIONS. A CONTRACTION JOINT SHALL BE LOCATED AT EACH THIRD POINT BETWEEN PARAPET EXPANSION JOINTS. ONLY ONE CONTRACTION JOINT IS REQUIRED AT MIDPOINT OF RAIL SEGMENTS LESS THAN 20 FEET IN LENGTH AND NO CONTRACTION JOINTS ARE REQUIRED FOR THOSE SEGMENTS LESS THAN 10 FEET IN LENGTH.

FOR LOCATION OF GUARDRAIL ANCHOR ASSEMBLIES, SEE "GUARDRAIL ANCHORAGE DETAILS FOR 1'-2" X 2'-8" CONCRETE PARAPET" SHEET.

\*\* THE CONTRACTOR SHALL USE ADHESIVELY ANCHORED #5S1 BARS. LEVEL 2 FIELD TESTING IS REQUIRED, AND THE YIELD LOAD OF THE #5S1 IS 18.6 KIPS. FOR ADHESIVELY ANCHORED ANCHOR BOLTS OR DOWELS, SEE STANDARD SPECIFICATIONS.

BAR TYPE



ALL BAR DIMENSIONS ARE OUT TO OUT.

BILL OF MATERIAL

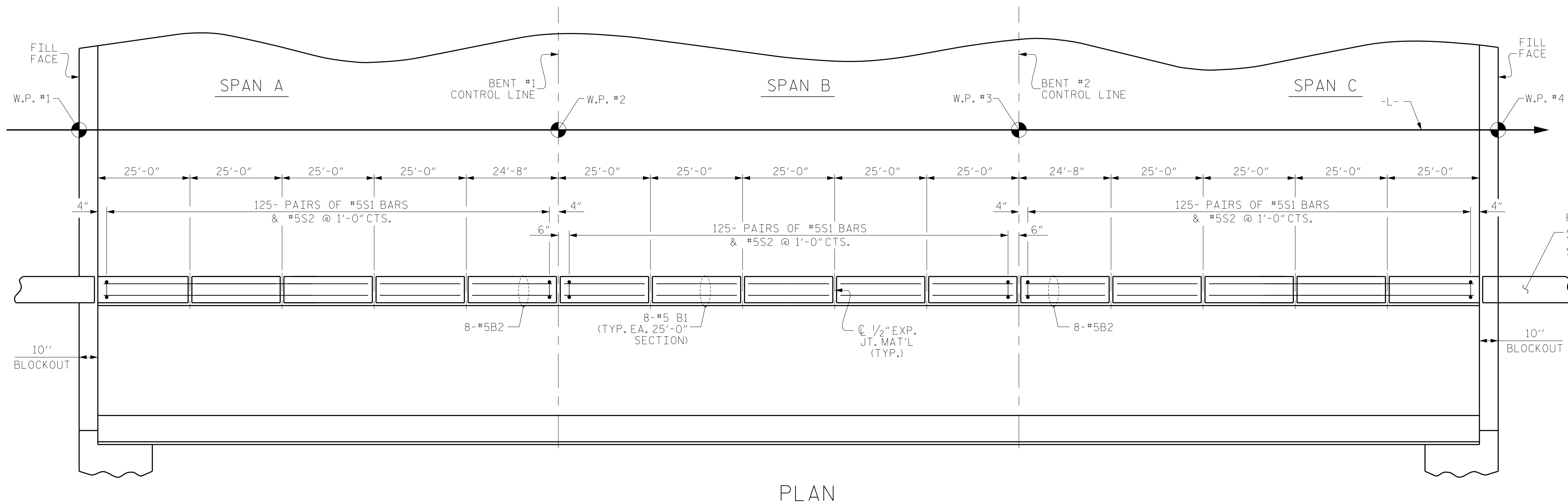
1'-2" X 2'-8" CONCRETE PARAPET

BAR	NO.	SIZE	TYPE	LENGTH	WEIGHT
*B1	104	#5	STR	24'-8"	2676
*B2	16	#5	STR	24'-4"	406
*S1	750	#5	STR	1'-9"	1369
*S2	375	#5	1	5'-6"	2151

\* EPOXY COATED REINFORCING STEEL LBS. 6,602

CLASS AA CONCRETE CU. YDS. 43.1

1'-2" X 2'-8" CONCRETE PARAPET LIN. FT. 374.33



FOR CONCRETE PARAPET ON APPROACH SLABS, SEE "BRIDGE APPROACH SLAB" SHEETS

PROJECT NO. R-3825B  
JOHNSTON COUNTY  
STATION: 64+20.00 -L-

STATE OF NORTH CAROLINA  
DEPARTMENT OF TRANSPORTATION  
RALEIGH  
SUPERSTRUCTURE  
1'-2" X 2'-8"  
CONCRETE PARAPET

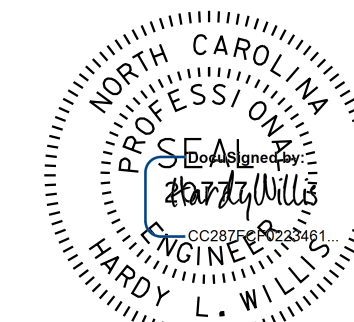
REVISIONS						SHEET NO.
NO.	BY:	DATE:	NO.	BY:	DATE:	S-34
1			3			TOTAL SHEETS
2			4			59

DRAWN BY: WDC DATE: 7-2017  
CHECKED BY: ACO DATE: 12-2017

**V&M**  
Vaughn & Melton  
Consulting Engineers  
Asheville, North Carolina  
828-253-2796

- Boone, NC 828-355-9933
- Tri-Cities, TN 423-467-8400
- Knoxville, TN 865-546-5800
- Spartanburg, SC 864-574-4775
- Charleston, SC 843-974-5650
- Middlesboro, KY 606-248-6600
- Raleigh, NC 919-977-9455
- Charlotte, NC 704-357-0488
- Atlanta, GA 770-627-3590

Copyright © 2006 Vaughn & Melton, Inc. All Rights Reserved



7/17/2018 9:13:46 AM EDT

DOCUMENT NOT CONSIDERED FINAL UNLESS ALL SIGNATURES COMPLETED