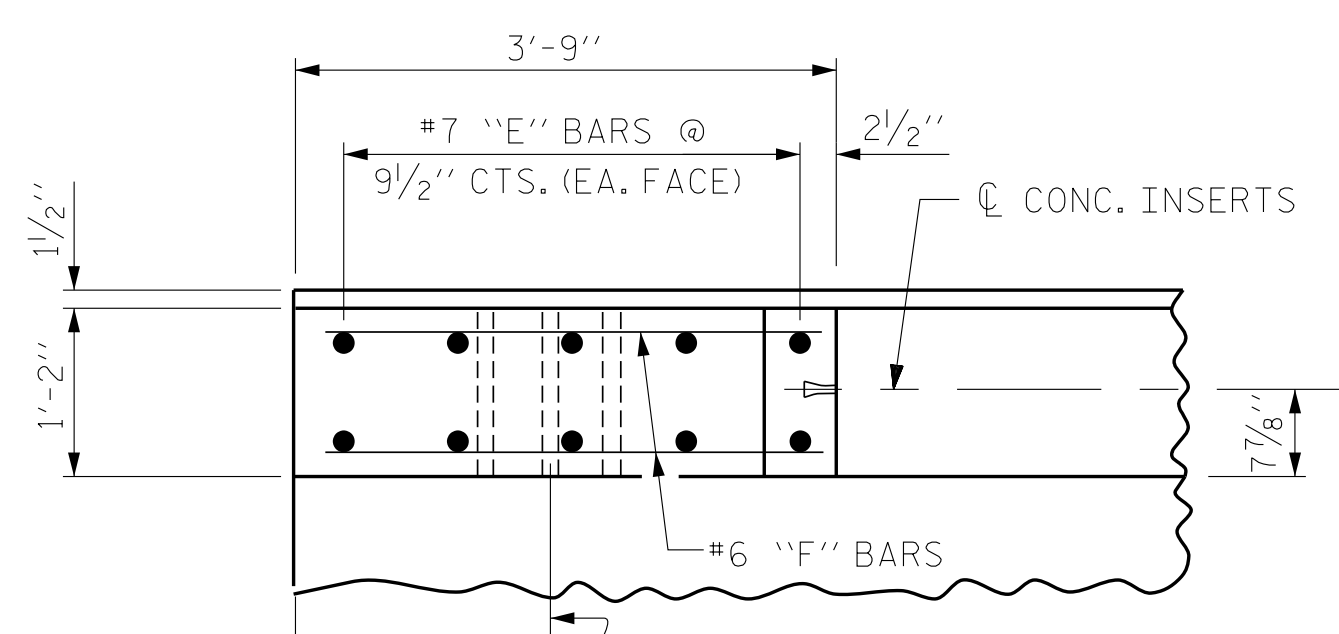
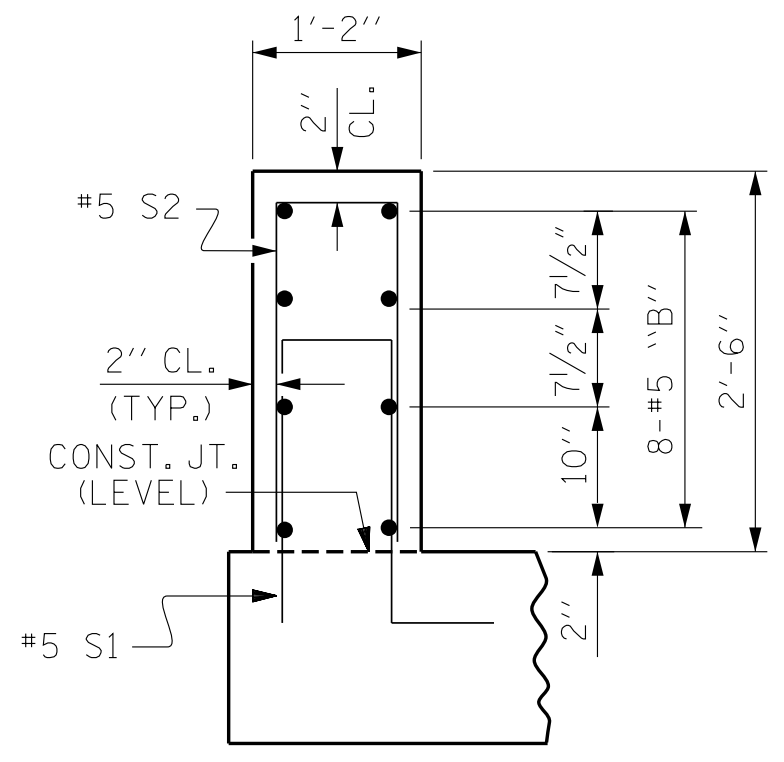


PLAN OF PARAPET



PLAN OF END POST



SECTION THROUGH PARAPET

NOTES

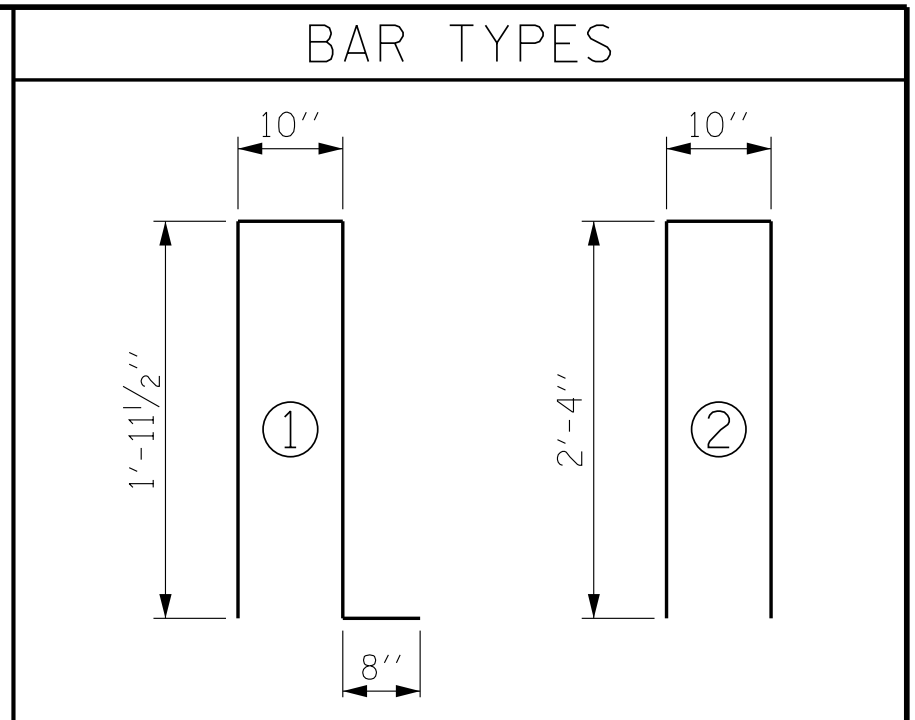
CONCRETE PARAPET IN A CONTINUOUS UNIT SHALL NOT BE CAST UNTIL ALL SLAB CONCRETE IN THE UNIT HAS BEEN CAST AND HAS REACHED A MINIMUM COMPRESSIVE STRENGTH OF 3,000 PSI.

ALL REINFORCING STEEL IN PARAPET AND END POSTS SHALL BE EPOXY COATED.

GROOVED CONTRACTION JOINTS, 1/2" IN DEPTH, SHALL BE TOOLED IN ALL EXPOSED FACES OF THE PARAPET AND IN ACCORDANCE WITH ARTICLE 825-10(B) OF THE STANDARD SPECIFICATIONS. A CONTRACTION JOINT SHALL BE LOCATED AT EACH THIRD POINT BETWEEN PARAPET EXPANSION JOINTS. ONLY ONE CONTRACTION JOINT IS REQUIRED AT MIDPOINT OF PARAPET SEGMENTS LESS THAN 20 FEET IN LENGTH AND NO CONTRACTION JOINTS ARE REQUIRED FOR THOSE SEGMENTS LESS THAN 10 FEET IN LENGTH.

FOR DETAILS OF CONCRETE INSERTS IN END POSTS, SEE "RAIL POST SPACINGS AND END OF RAIL DETAILS" SHEET.

FOR LOCATION OF GUARDRAIL ANCHOR ASSEMBLIES, SEE "GUARDRAIL ANCHORAGE DETAILS FOR METAL RAILS" SHEET.



ALL BAR DIMENSIONS ARE OUT TO OUT.

BILL OF MATERIAL

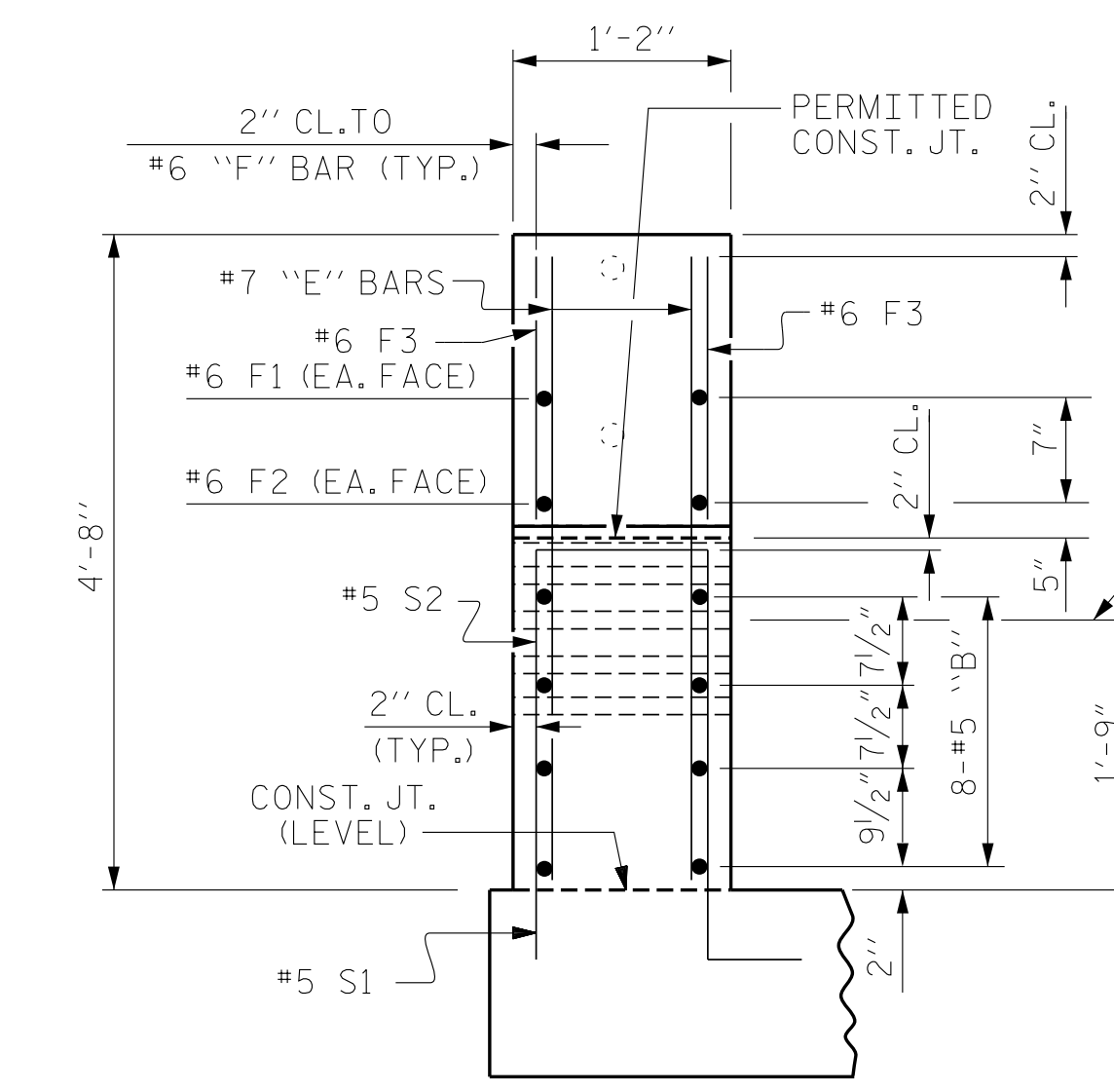
2 PARAPETS AND 4 END POSTS

BAR NO.	NO.	SIZE	TYPE	LENGTH	WEIGHT
*B1	208	#5	STR	24'-8"	5351
*B2	32	#5	STR	24'-4"	812
*E1	8	#7	STR	2'-6"	41
*E2	8	#7	STR	3'-0"	49
*E3	8	#7	STR	3'-6"	57
*E4	8	#7	STR	4'-0"	65
*E5	8	#7	STR	4'-4"	71
*F1	8	#6	STR	1'-10"	22
*F2	8	#6	STR	2'-10"	34
*F3	8	#6	STR	3'-6"	42
*S1	750	#5	1	5'-5"	4237
*S2	750	#5	2	5'-6"	4302

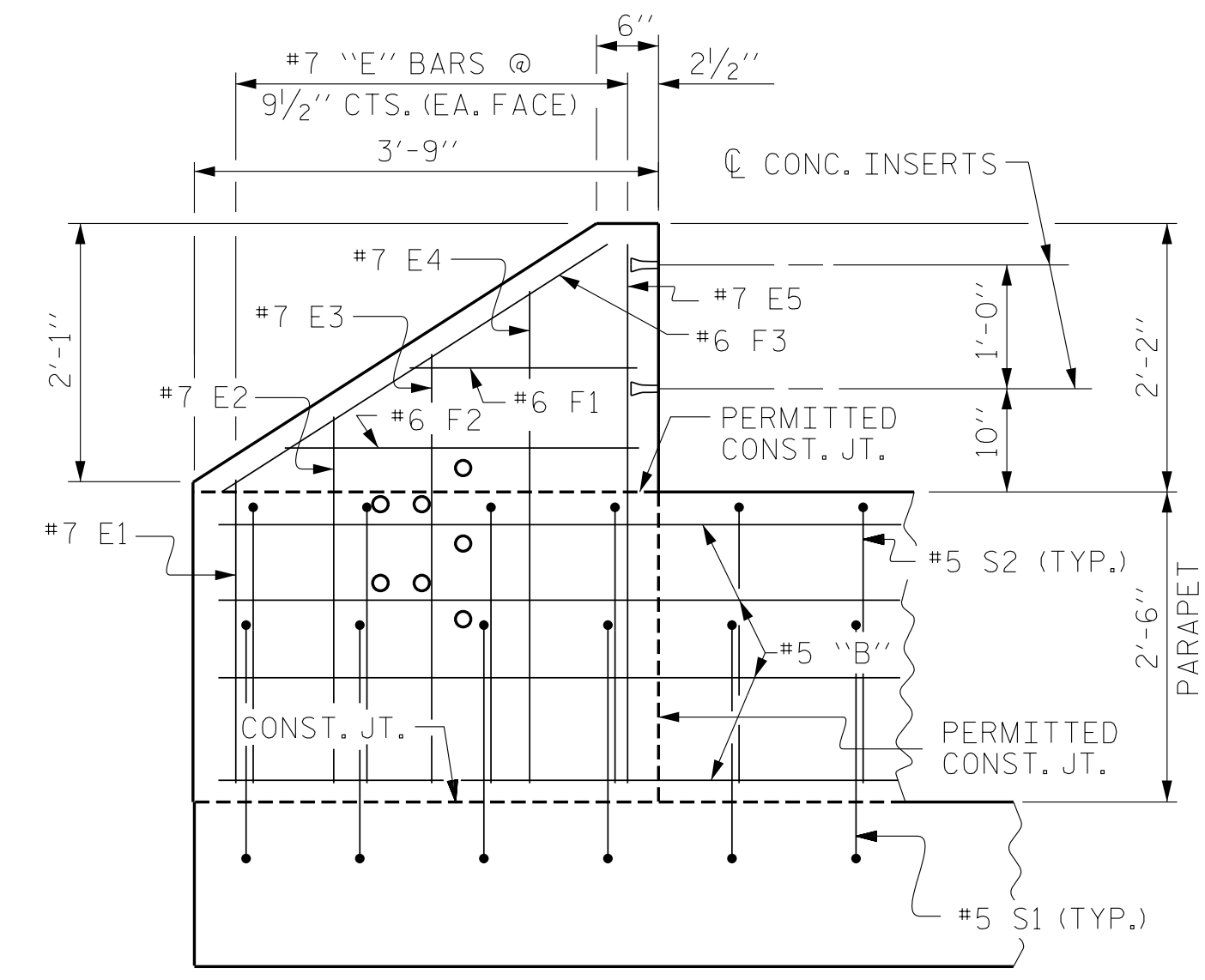
* EPOXY COATED REINFORCING STEEL LBS. 15,083

CLASS AA CONCRETE CU. YDS. 83.3

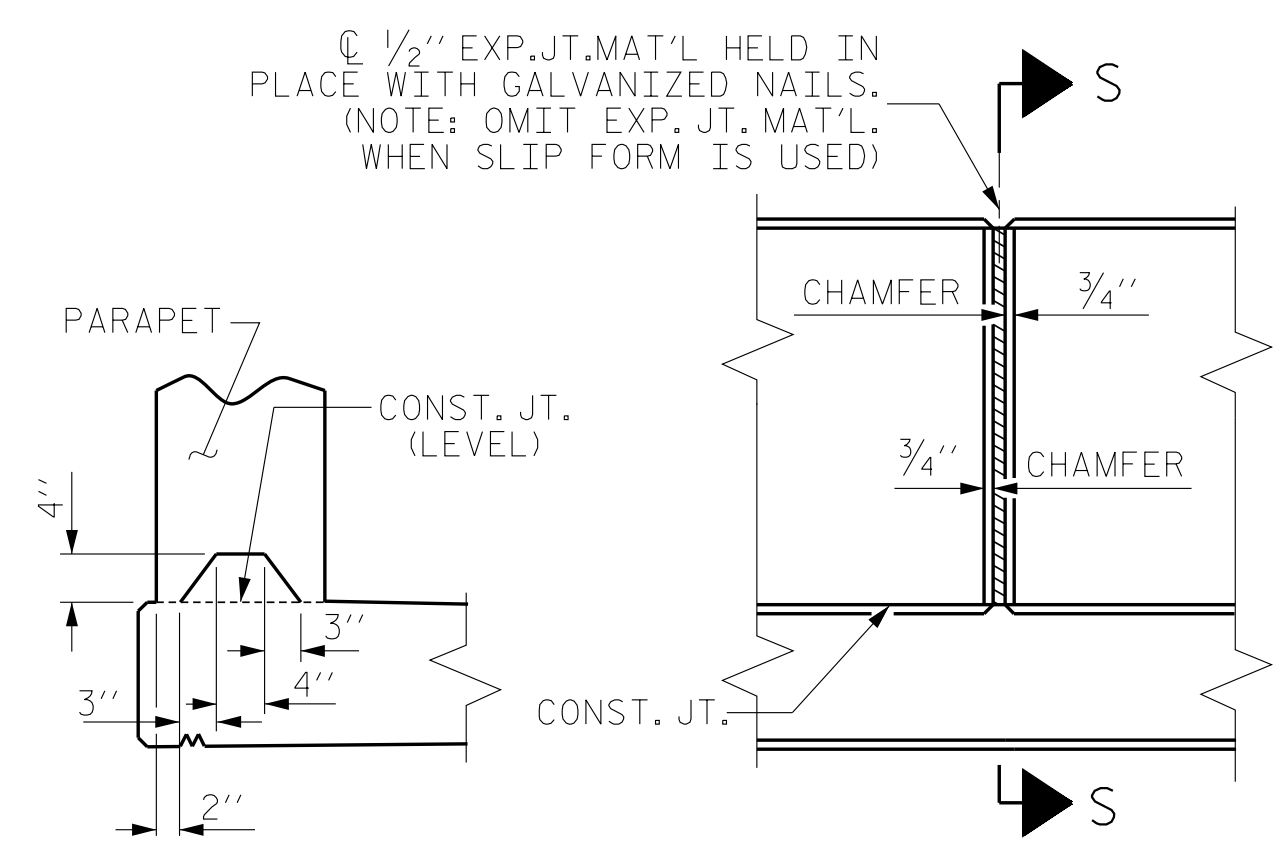
1'-2" X 2'-6" CONCRETE PARAPET LIN. FT. 748.67



END VIEW



ELEVATION



SECTION S-S

AT DAM IN OPEN JOINT (THIS IS TO BE USED ONLY WHEN SLIP FORM IS USED)

ELEVATION AT EXPANSION JOINTS

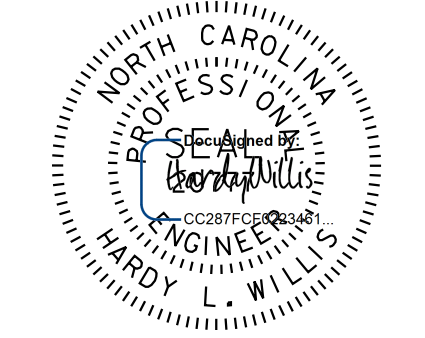
PARAPET AND END POST FOR TWO BAR RAIL

CONCRETE PARAPET DETAILS

V&M
Vaughn & Melton
Consulting Engineers
Asheville, North Carolina
828-253-2796

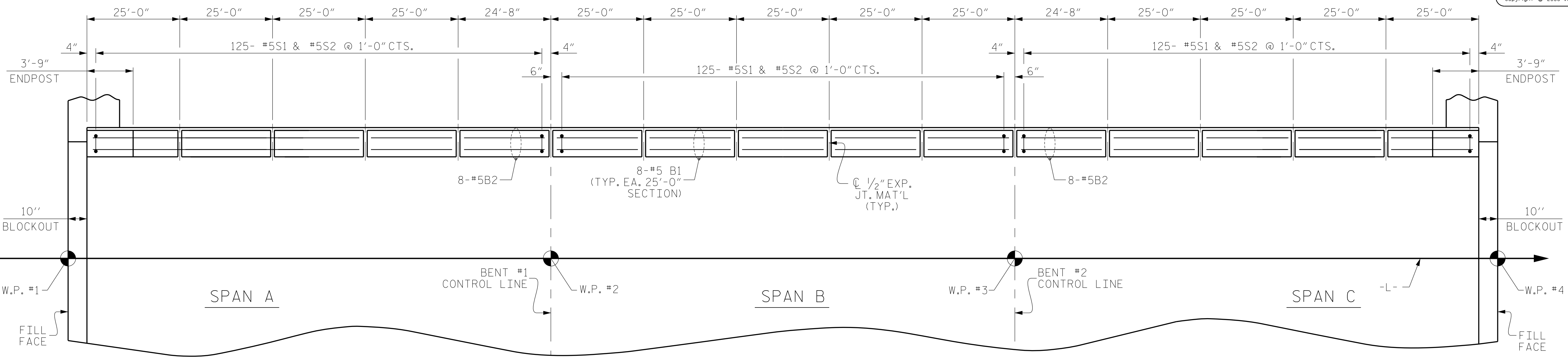
- Boone, NC 828-355-9933
- Tri-Cities, TN 423-467-8401
- Knoxville, TN 865-546-5800
- Spartanburg, SC 864-574-4775
- Charleston, SC 843-974-5650
- Midway, KY 606-248-5600
- Atlanta, GA 770-627-3590
- Raleigh, NC 919-977-9455
- Charlotte, NC 704-357-0488

Copyright © 2006 Vaughn & Melton, Inc. All Rights Reserved



7/17/2018 9:13:46 AM EDT

DOCUMENT NOT CONSIDERED FINAL UNLESS ALL SIGNATURES COMPLETED



PLAN OF PARAPET (LEFT SIDE SHOWN, RIGHT SIDE SIMILAR)

PROJECT NO. R-3825B
JOHNSTON COUNTY
STATION: 64+20.00 -L-

STATE OF NORTH CAROLINA
DEPARTMENT OF TRANSPORTATION
RALEIGH

SUPERSTRUCTURE
CONCRETE PARAPET AND
END POST DETAILS

DRAWN BY: WDC DATE: 7-2017
CHECKED BY: ACO DATE: 12-2017

REVISIONS						SHEET NO. S-32
NO.	BY:	DATE:	NO.	BY:	DATE:	
1			3			TOTAL SHEETS 59
2			4			