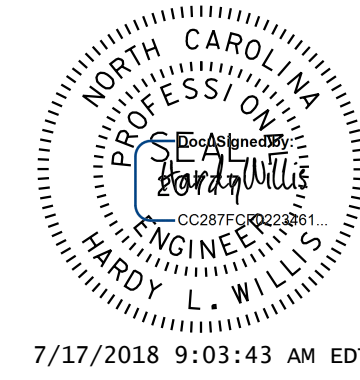


GIRDER LAYOUT

FOR INTERMEDIATE STEEL DIAPHRAGM DETAILS,
SEE "INTERMEDIATE STEEL DIAPHRAGMS FOR PRESTRESSED
CONCRETE GIRDERS" SHEET.



7/17/2018 9:03:43 AM EDT

DOCUMENT NOT CONSIDERED
FINAL UNLESS ALL
SIGNATURES COMPLETED

PROJECT NO. R-3825B
JOHNSTON COUNTY
STATION: 64+20.00 -L-

STATE OF NORTH CAROLINA
DEPARTMENT OF TRANSPORTATION
RALEIGH

**SUPERSTRUCTURE
GIRDER LAYOUT**

DRAWN BY : WDC DATE : 7-2017
CHECKED BY : ACO DATE : 12-2017
DESIGN ENGINEER OF RECORD: ACO DATE : 12-2017

V&M
Vaughn & Melton
Consulting Engineers

- Asheville, North Carolina 828-253-2796
- Raleigh, NC 919-977-9455
- Charlotte, NC 704-357-0488
- Boone, NC 828-355-9933
- Tri-Cities, TN 423-467-8401
- Knoxville, TN 865-546-5800
- Spartanburg, SC 864-574-4775
- Charleston, SC 843-974-5650
- Middlesboro, KY 606-248-6600
- Atlanta, GA 770-627-3590

Copyright © 2006 Vaughn & Melton, Inc. All Rights Reserved

REVISIONS						SHEET NO.
NO.	BY:	DATE:	NO.	BY:	DATE:	TOTAL SHEETS
1			3			59
2			4			