

PLAN OF SPAN C

PROJECT NO. R-3825B
 JOHNSTON COUNTY
 STATION: 64+20.00 -L-

SHEET 6 OF 6

STATE OF NORTH CAROLINA
 DEPARTMENT OF TRANSPORTATION
 RALEIGH

SUPERSTRUCTURE
 PLAN OF SPAN C
 (STAGE II)

REVISIONS

| NO. | BY: | DATE: | NO. | BY: | DATE: |
|-----|-----|-------|-----|-----|-------|
| 1 | | | 3 | | |
| 2 | | | 4 | | |

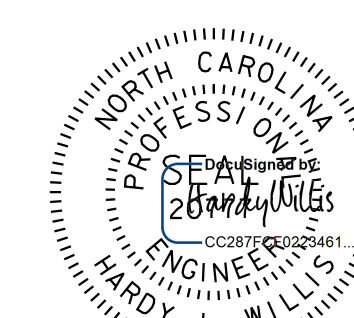
SHEET NO.
S-17
TOTAL SHEETS
59

V&M
 Vaughn & Melton
 Consulting Engineers

Asheville,
 North Carolina
 828-253-2796

Boone, NC 828-355-9933
 Tri-Cities, TN 423-467-9400
 Knoxville, TN 865-546-5800
 Spartanburg, SC 864-574-4775
 Charleston, SC 843-974-5650
 Middleboro, KY 606-248-6600
 Raleigh, NC 919-977-9455
 Charlotte, NC 704-357-0488
 Atlanta, GA 770-627-3590

Copyright © 2006 Vaughn & Melton, Inc. All Rights Reserved.



7/17/2018 9:03:43 AM EDT

DOCUMENT NOT CONSIDERED
 FINAL UNLESS ALL
 SIGNATURES COMPLETED

DRAWN BY: WDC DATE: 7-2017
 CHECKED BY: ACO DATE: 12-2017
 DESIGN ENGINEER OF RECORD: ACO DATE: 12-2017