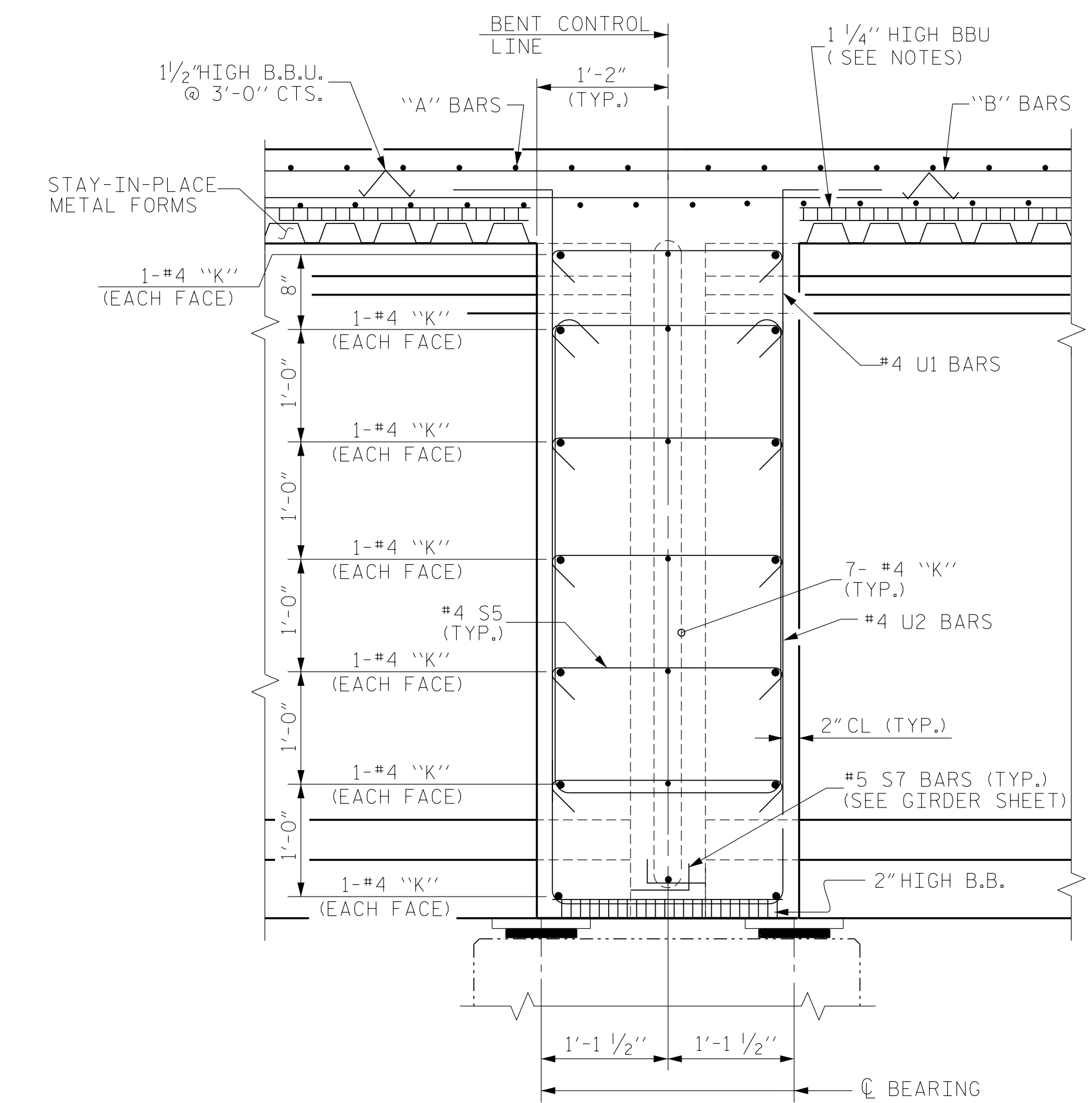
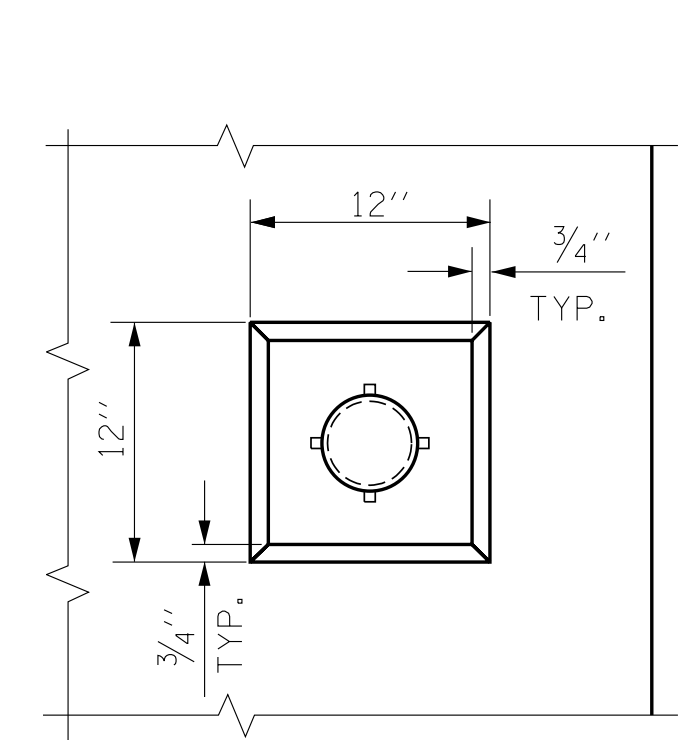


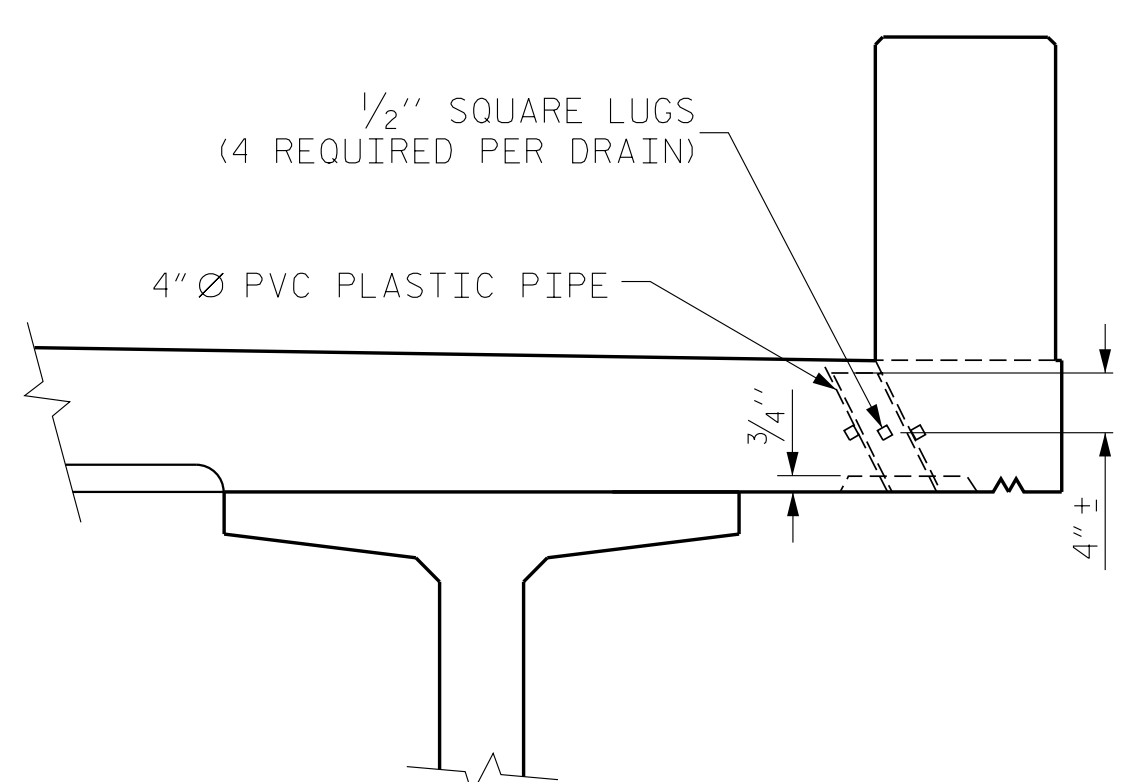
SECTION THRU INTEGRAL END BENT



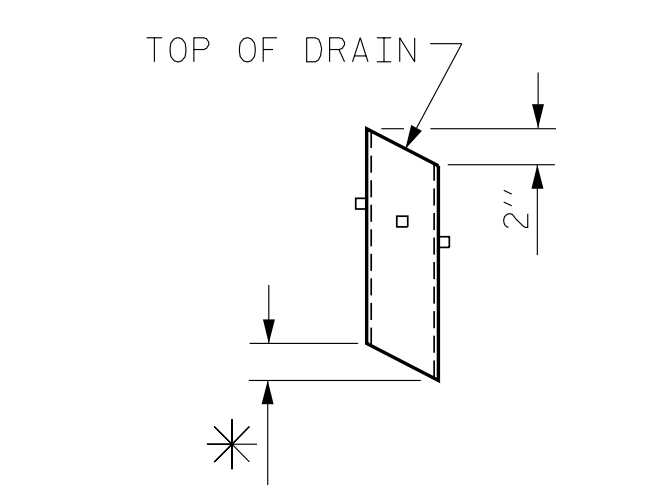
SECTION THRU BENT DIAPHRAGM



PLAN OF RECESS



ELEVATION



PIPE DETAIL

DRAIN DETAILS

TOP OF FLOOR DRAINS TO BE SET 3/8" BELOW SURFACE OF SLAB.
 4 - 1/2" SQUARE LUGS TO BE GLUED TO THE P.V.C. PLASTIC PIPE AT EQUAL SPACES AROUND THE PIPE DRAIN APPROXIMATELY 4" FROM THE TOP OF THE PIPE.
 THE 4" Ø PVC PLASTIC PIPE AND FITTINGS SHALL BE SCHEDULE 40 AND CONFORM TO ASTM D1785.

V&M
Vaughn & Melton
 Consulting Engineers
 Asheville, North Carolina
 828-253-2796

- Boone, NC 828-355-9933
- Tri-Cities, TN 423-467-8401
- Knoxville, TN 865-546-5800
- Spartanburg, SC 864-574-4775
- Charleston, SC 843-974-5650
- Middeborb, KY 606-248-6600
- Atlanta, GA 770-627-3590
- Raleigh, NC 919-977-9455
- Charlotte, NC 704-357-0488

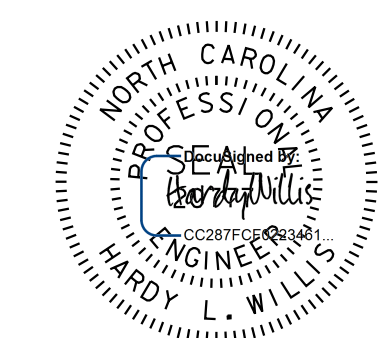
Copyright © 2006 Vaughn & Melton, Inc. All Rights Reserved

PROJECT NO. R-3825B
JOHNSTON COUNTY
 STATION: 64+20.00 -L-

SHEET 4 OF 4

STATE OF NORTH CAROLINA
 DEPARTMENT OF TRANSPORTATION
 RALEIGH

SUPERSTRUCTURE
 TYPICAL SECTION
 (STAGE I & II)



7/17/2018 9:03:43 AM EDT

DRAWN BY: WDC DATE: 5/2017
 CHECKED BY: ACO DATE: 12/2017
 DESIGN ENGINEER OF RECORD: ACO DATE: 12/2017

DOCUMENT NOT CONSIDERED
 FINAL UNLESS ALL
 SIGNATURES COMPLETED

REVISIONS						SHEET NO. S-11
NO.	BY:	DATE:	NO.	BY:	DATE:	
1			3			TOTAL SHEETS 59
2			4			