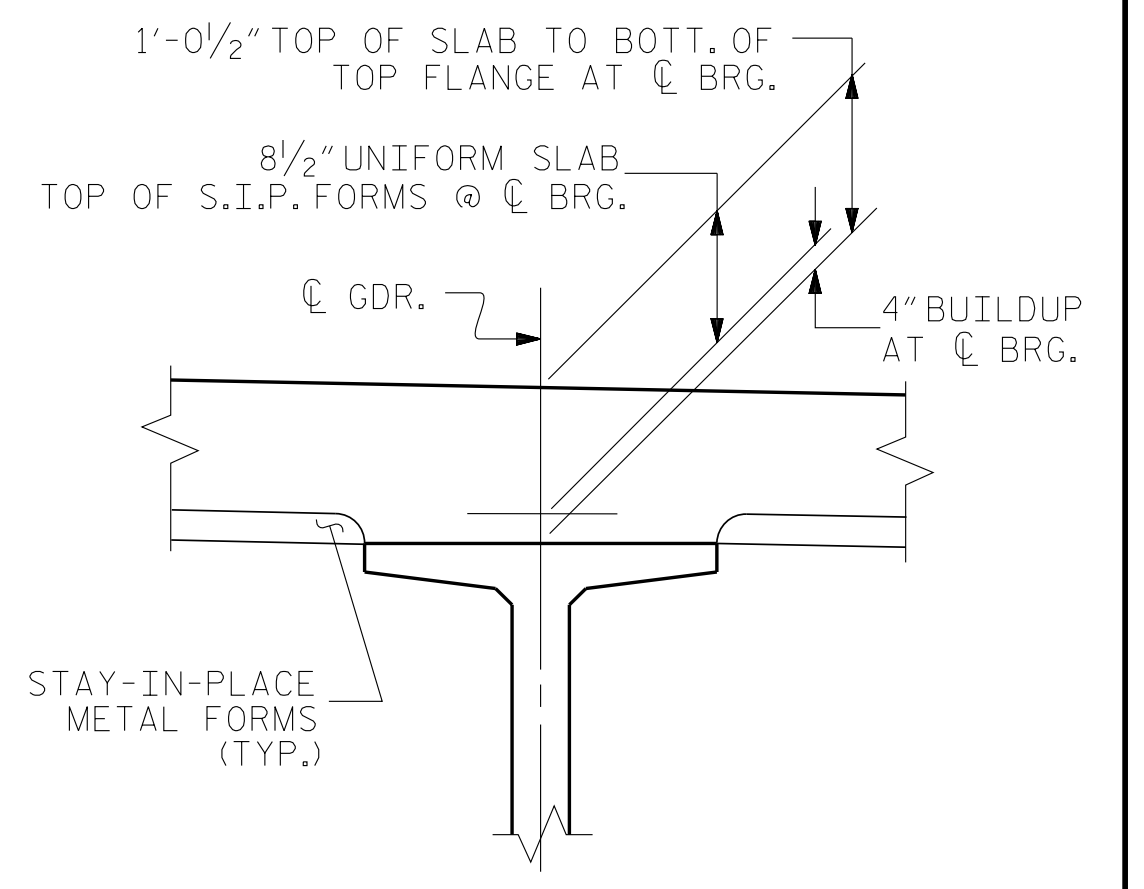
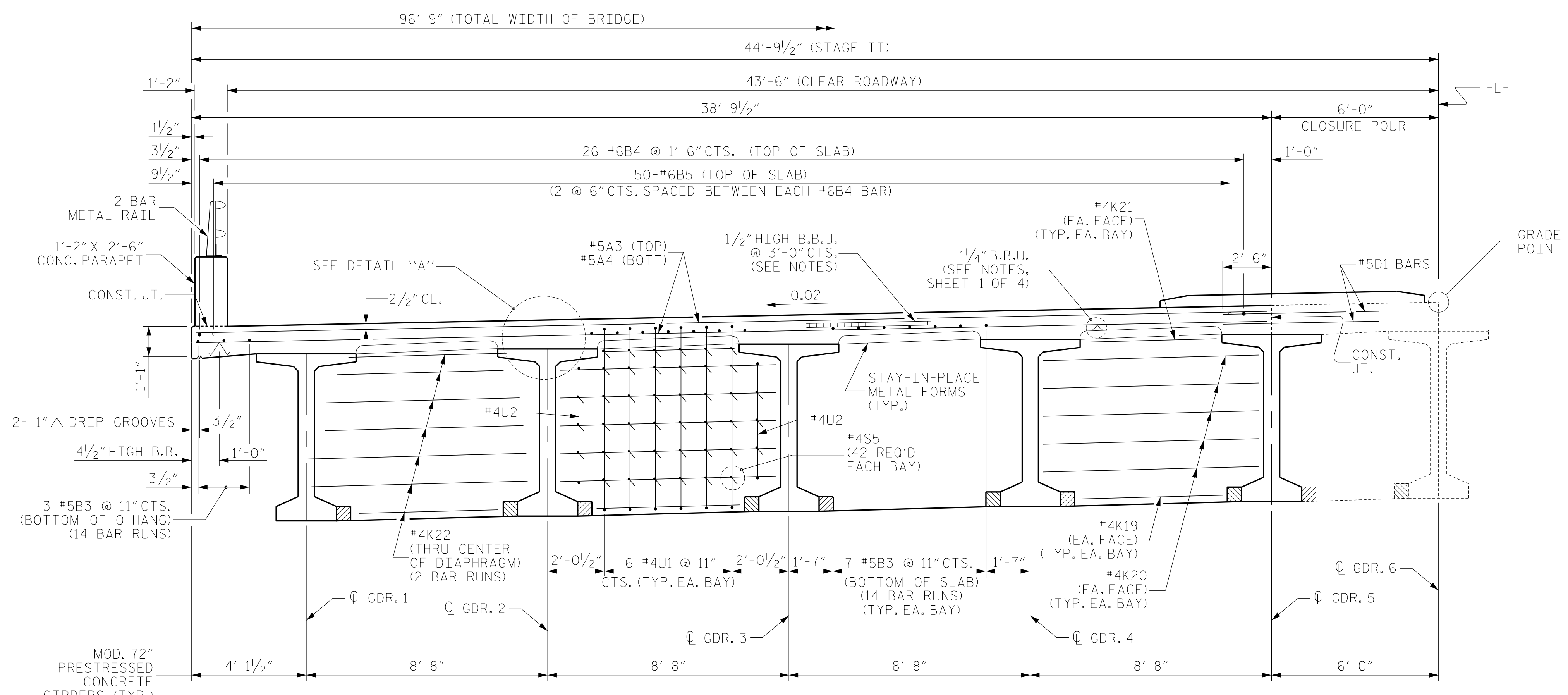


TYPICAL SECTION @ INTEGRAL END BENT



DETAIL "A"



TYPICAL SECTION @ BENT DIAPHRAGM

V&M
Vaughn & Melton
 Consulting Engineers
 Asheville, North Carolina
 828-253-2796

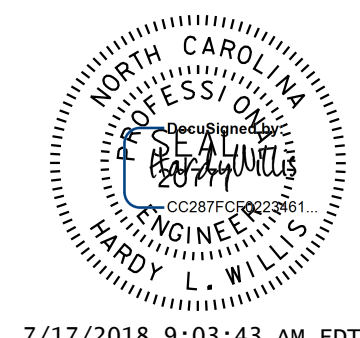
Boone, NC 828-355-9933
 Tri-Cities, TN 423-467-8401
 Knoxville, TN 865-546-5800
 Spartanburg, SC 864-574-4775
 Charleston, SC 843-974-5650
 Middlesboro, KY 606-248-6600
 Charlotte, NC 704-357-0488
 Atlanta, GA 770-627-3590

Copyright © 2006 Vaughn & Melton, Inc. All Rights Reserved

PROJECT NO. R-3825B
JOHNSTON COUNTY
 STATION: 64+20.00 -L-
 SHEET 2 OF 4

STATE OF NORTH CAROLINA
 DEPARTMENT OF TRANSPORTATION
 RALEIGH

SUPERSTRUCTURE
 TYPICAL SECTION
 (STAGE II)



7/17/2018 9:03:43 AM EDT

DRAWN BY: WDC DATE: 5/2017
 CHECKED BY: ACO DATE: 12/2017
 DESIGN ENGINEER OF RECORD: ACO DATE: 12/2017

DOCUMENT NOT CONSIDERED
 FINAL UNLESS ALL
 SIGNATURES COMPLETED

REVISIONS						SHEET NO.	
NO.	BY:	DATE:	NO.	BY:	DATE:	TOTAL SHEETS	
1			3			S-9	
2			4			59	