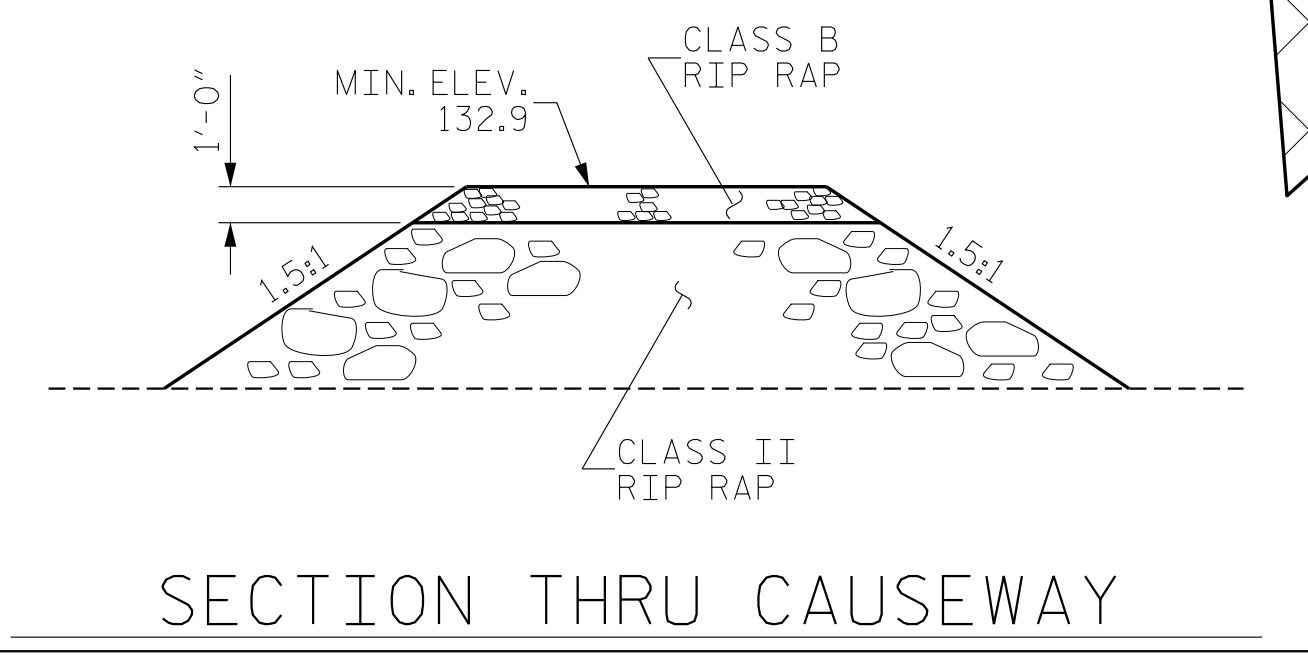
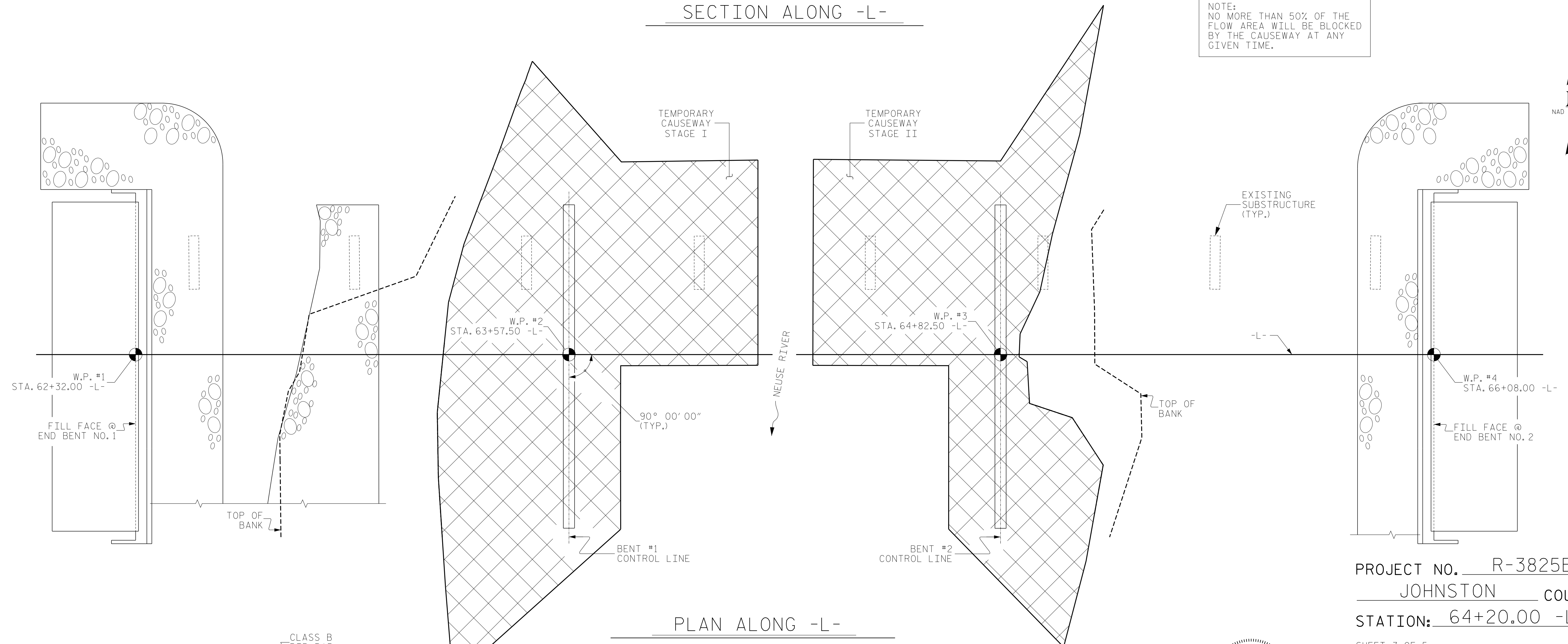


NOTE:  
NO MORE THAN 50% OF THE  
FLOW AREA WILL BE BLOCKED  
BY THE CAUSEWAY AT ANY  
GIVEN TIME.

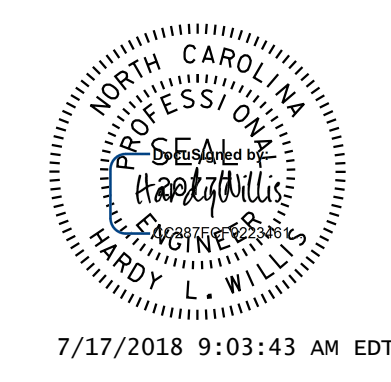


PROJECT NO. R-3825B  
JOHNSTON COUNTY  
STATION: 64+20.00 -L-

SHEET 3 OF 5

STATE OF NORTH CAROLINA  
DEPARTMENT OF TRANSPORTATION  
RALEIGH

GENERAL DRAWING  
TEMPORARY  
CAUSEWAY  
FOR BRIDGE OVER  
NEUSE RIVER ON NC42  
BETWEEN SR 2008 AND SR 1705



7/17/2018 9:03:43 AM EDT

DOCUMENT NOT CONSIDERED  
FINAL UNLESS ALL  
SIGNATURES COMPLETED

**V&M**  
Vaughn & Melton  
Consulting Engineers

Asheville, North Carolina 828-293-2796

Raleigh, NC 919-977-9455      Charlotte, NC 704-357-0488

Boone, NC 828-355-9933      Tri-Cities, TN 423-467-8400

Knoxville, TN 865-546-5800      Spartanburg, SC 864-574-4775

Charleston, SC 843-974-5650      Middlesboro, KY 606-248-6600

Atlanta, GA 770-627-3590

Copyright © 2006 Vaughn & Melton, Inc. All Rights Reserved

DWN. BY: WDC      DATE: 4/2017  
CHKD. BY: ACO      DATE: 12/2017  
DES. EGR. OF RECORD: ACO      DATE: 12/2017

REVISIONS					
NO.	BY:	DATE:	NO.	BY:	DATE:
1			3		
2			4		

SHEET NO.  
S-3  
TOTAL SHEETS  
59