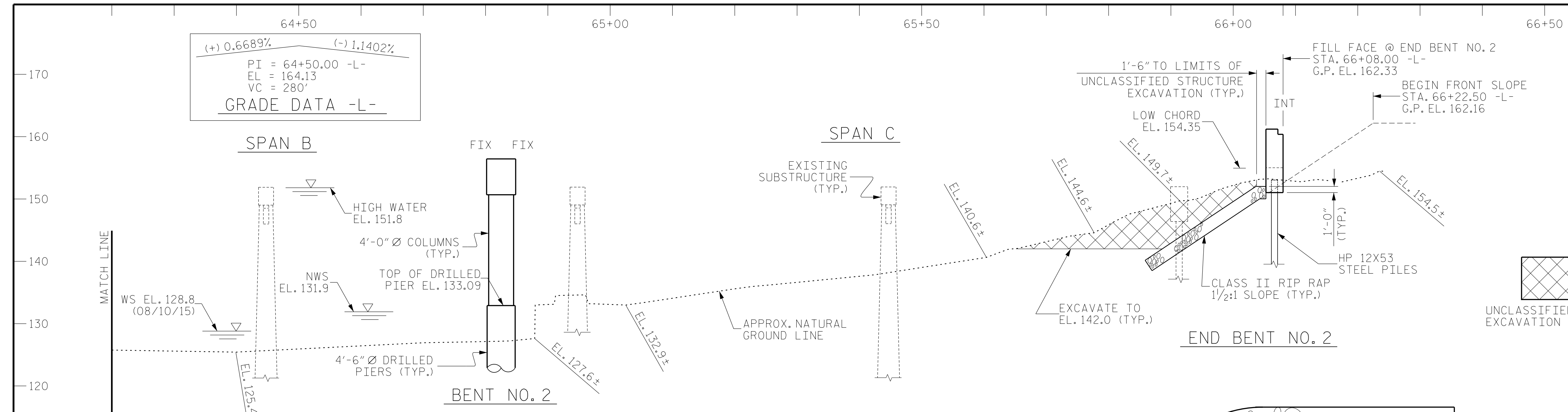
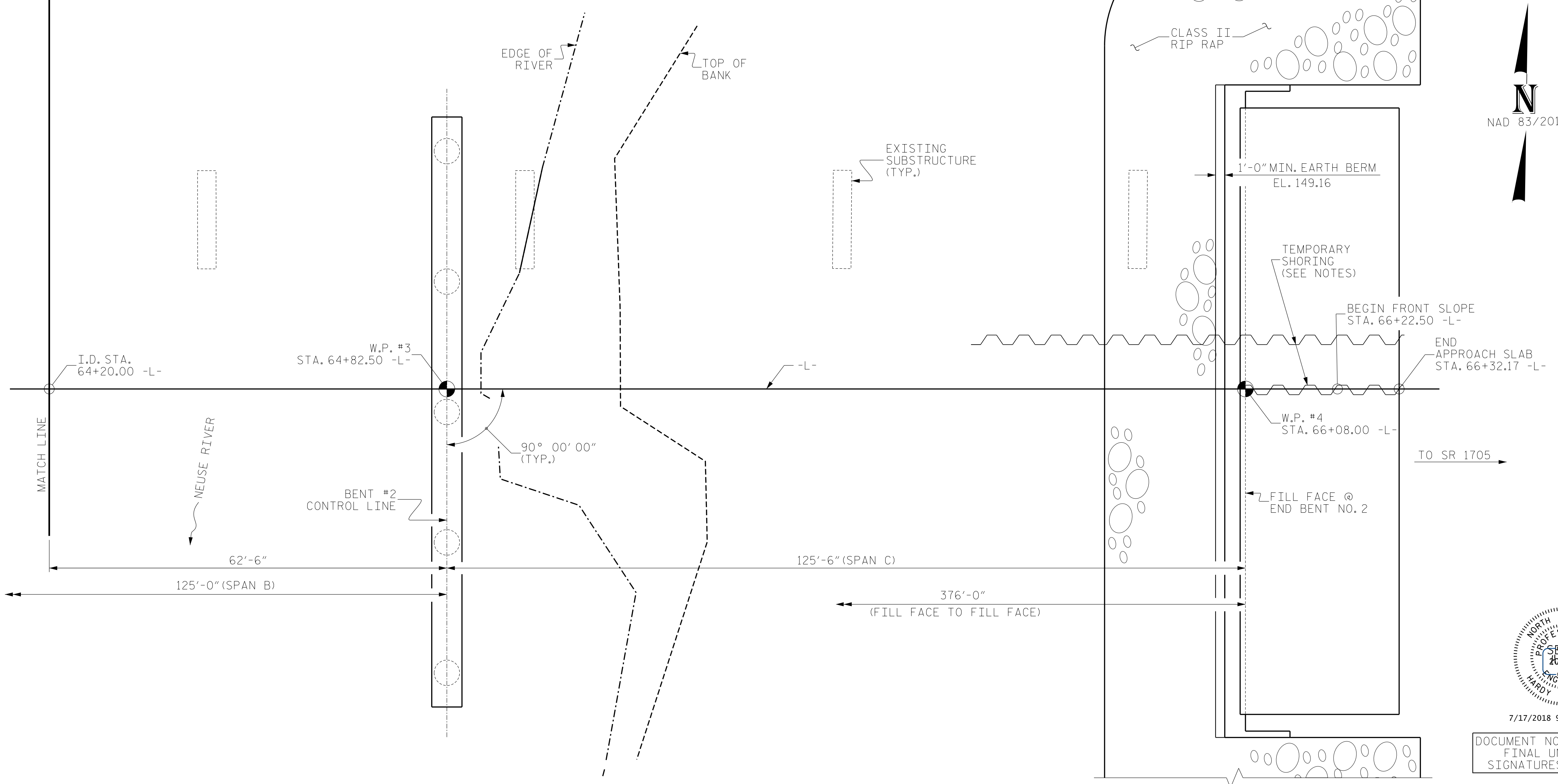


64+50
 (+) 0.6689% (-) 1.1402%
 PI = 64+50.00 -L-
 EL = 164.13
 VC = 280'
 GRADE DATA -L-



PARTIAL SECTION ALONG -L-



PARTIAL PLAN ALONG -L-

(PILES NOT SHOWN IN PLAN VIEW FOR CLARITY)

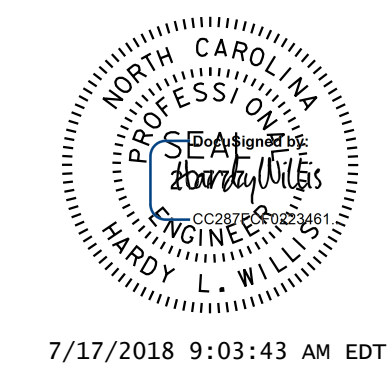


V&M
 Vaughn & Melton
 Consulting Engineers
 Asheville, North Carolina
 828-253-2796

- Boone, NC 828-355-9933
- Tri-Cities, TN 423-467-8401
- Knoxville, TN 865-546-5800
- Spartanburg, SC 864-574-4775
- Charleston, SC 843-974-5650
- Middlesboro, KY 606-248-6600
- Raleigh, NC 919-977-9455
- Charlotte, NC 704-357-0488
- Atlanta, GA 770-627-3580

Copyright © 2006 Vaughn & Melton, Inc. All Rights Reserved

PROJECT NO. R-3825B
JOHNSTON COUNTY
 STATION: 64+20.00 -L-
 SHEET 2 OF 5



DOCUMENT NOT CONSIDERED FINAL UNLESS ALL SIGNATURES COMPLETED

STATE OF NORTH CAROLINA
 DEPARTMENT OF TRANSPORTATION
 RALEIGH

GENERAL DRAWING
 FOR BRIDGE OVER
 NEUSE RIVER ON NC42
 BETWEEN SR 2008 AND SR 1705

REVISIONS						SHEET NO.
NO.	BY:	DATE:	NO.	BY:	DATE:	S-2
1			3			TOTAL SHEETS
2			4			59

DWN. BY: WDC DATE: 4/2017
 CHKD. BY: ACO DATE: 12/2017
 DES. EGR. OF RECORD: ACO DATE: 12/2017