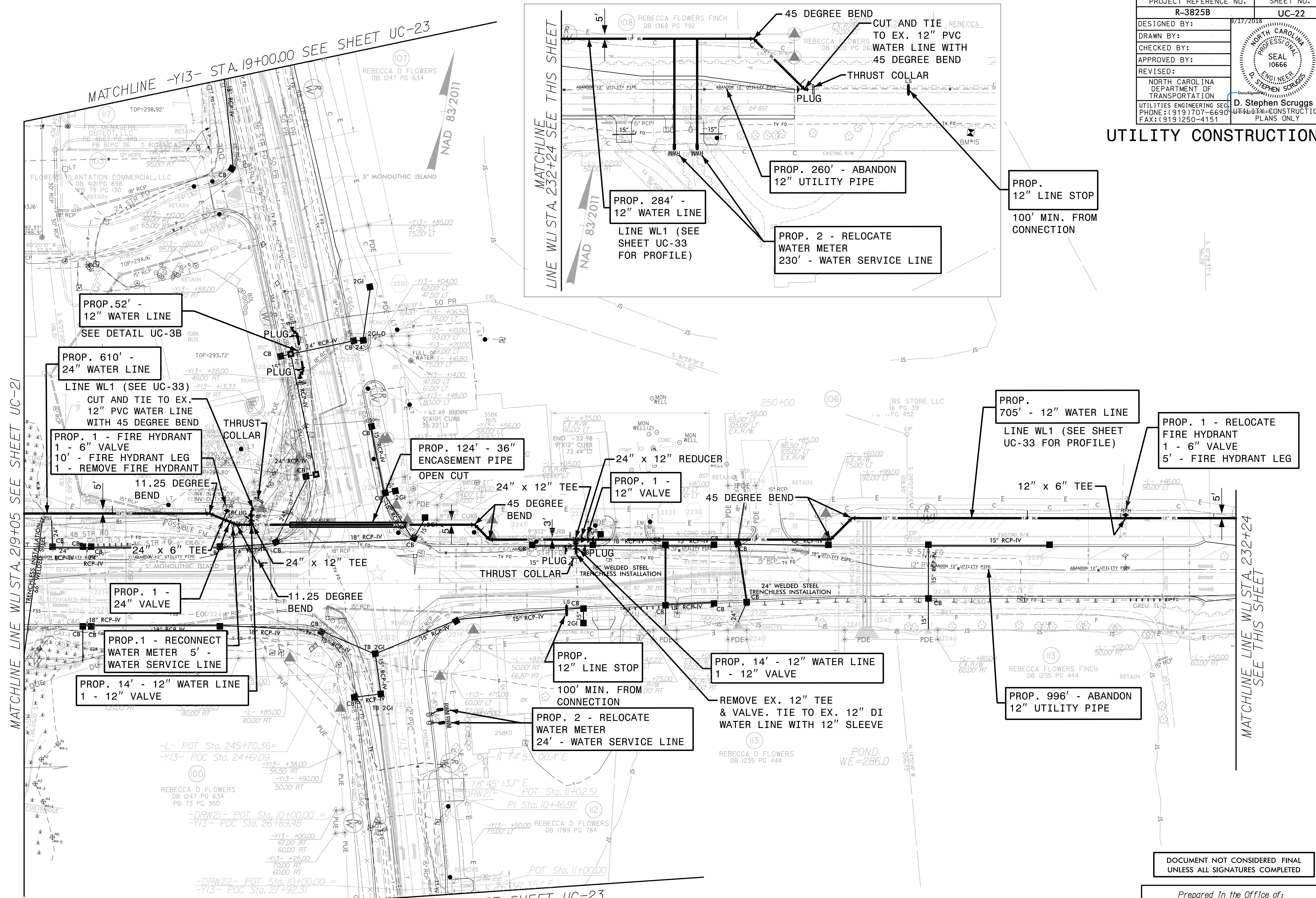


PROJECT REFERENCE NO.	SHEET NO.
R-3825B	UC-22
DESIGNED BY:	9/17/2018
DRAWN BY:	
CHECKED BY:	
APPROVED BY:	
REVISED:	
NORTH CAROLINA DEPARTMENT OF TRANSPORTATION UTILITIES ENGINEERING SECTION PHONE: (919) 707-6690 FAX: (919) 250-4151	
D. Stephen Scruggs LICENSED PROFESSIONAL ENGINEER PLANS ONLY	

UTILITY CONSTRUCTION



MATCHLINE LINE WL1 STA. 219+05 SEE SHEET UC-21

MATCHLINE LINE WL1 STA. 232+24 SEE THIS SHEET

MATCHLINE LINE WL1 STA. 232+24 SEE THIS SHEET

MATCHLINE -Y13- STA. 19+00.00 SEE SHEET UC-23

MATCHLINE -Y13- STA. 28+00.00 SEE SHEET UC-23

The estimated quantity of Ductile Iron Water Pipe Fittings on this plan sheet is 9585 pounds. The actual quantity and type of fittings will vary based on field conditions.

DOCUMENT NOT CONSIDERED FINAL UNLESS ALL SIGNATURES COMPLETED

Prepared In the Office of:



AECOM TECHNICAL SERVICES OF NORTH CAROLINA, INC.
 701 CORPORATE CENTER DRIVE, SUITE 475, RALEIGH, NC 27607
 919-854-6200 919-854-6259 (fax)

DATE: 9/17/2018
 TIME: 12:45:40 PM
 DGN: R3825B_UC_Plan22.dgn