

Prepared In the Office of:

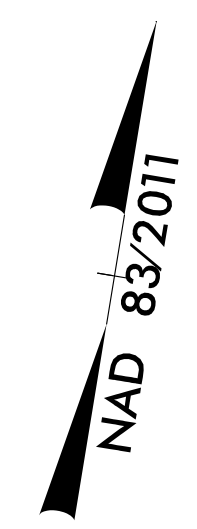


AECOM TECHNICAL SERVICES OF NORTH CAROLINA, INC.
701 CORPORATE CENTER DRIVE, SUITE 475, RALEIGH, NC 27607
919-854-6200 919-854-6259 (fax)
F-0342

PROJECT REFERENCE NO.	R-3825B	SHEET NO.	UC-20
DESIGNED BY:		DATE:	9/17/2018
DRAWN BY:			
CHECKED BY:			
APPROVED BY:			
REVISED:			
NORTH CAROLINA DEPARTMENT OF TRANSPORTATION		D. Stephen Scruggs SEAL 10666 REGISTERED PROFESSIONAL ENGINEER UTILITIES ENGINEERING SECTION PHONE: (919) 707-6690 FAX: (919) 250-4151	

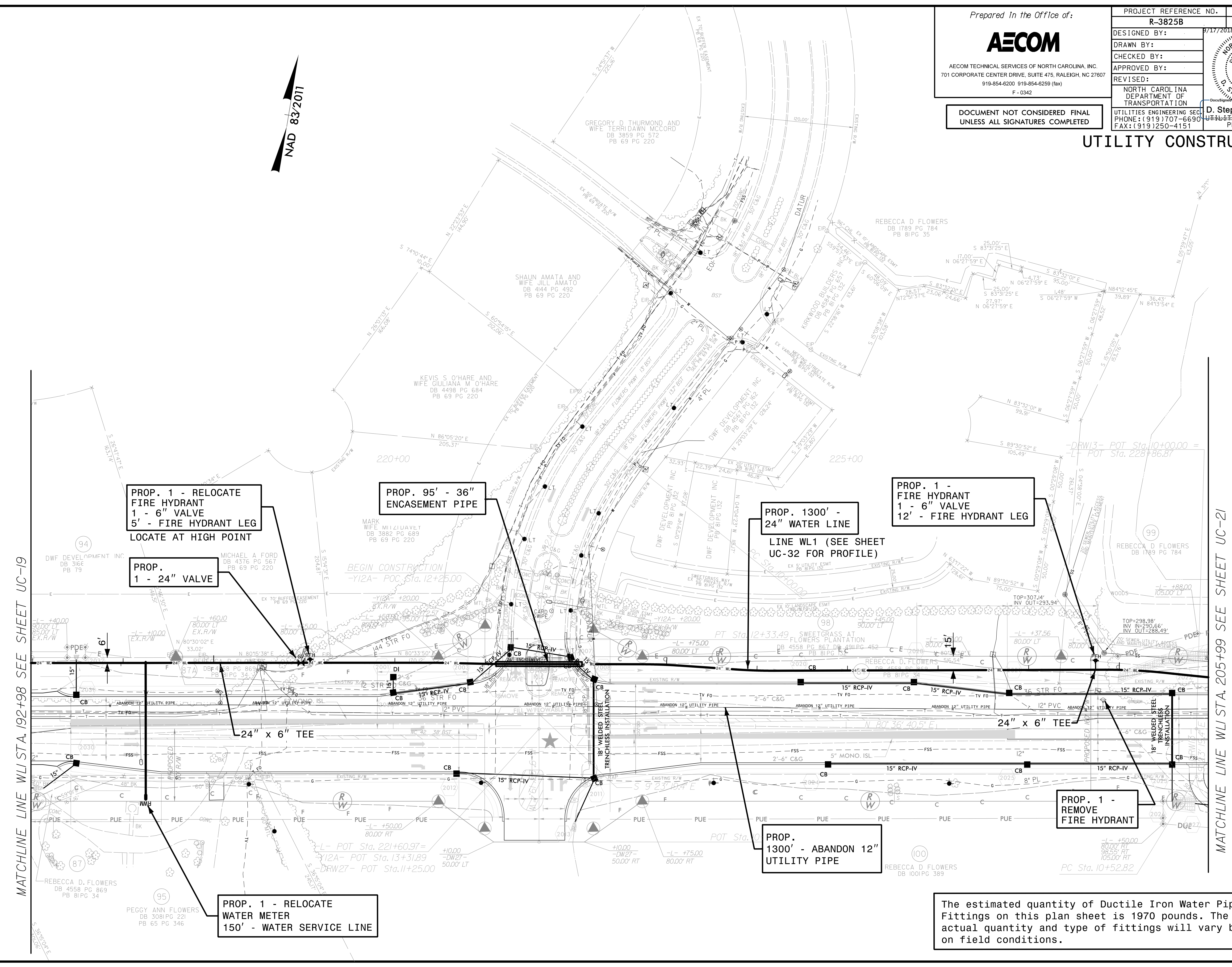
DOCUMENT NOT CONSIDERED FINAL
UNLESS ALL SIGNATURES COMPLETED

UTILITY CONSTRUCTION



MATCHLINE LINE WL1 STA. 192+98 SEE SHEET UC-19

MATCHLINE LINE WL1 STA. 205+99 SEE SHEET UC-21



PROP. 1 - RELOCATE FIRE HYDRANT
1 - 6" VALVE
5' - FIRE HYDRANT LEG
LOCATE AT HIGH POINT

PROP. 95' - 36" ENCASEMENT PIPE

PROP. 1300' - 24" WATER LINE
LINE WL1 (SEE SHEET UC-32 FOR PROFILE)

PROP. 1 - FIRE HYDRANT
1 - 6" VALVE
12' - FIRE HYDRANT LEG

PROP. 1 - 24" VALVE

PROP. 1 - RELOCATE WATER METER
150' - WATER SERVICE LINE

PROP. 1300' - ABANDON 12" UTILITY PIPE

PROP. 1 - REMOVE FIRE HYDRANT

The estimated quantity of Ductile Iron Water Pipe Fittings on this plan sheet is 1970 pounds. The actual quantity and type of fittings will vary based on field conditions.

DATE: 9/17/2018
TIME: 12:45:58 PM
DGN: R3825B_UC_Plan20.dgn