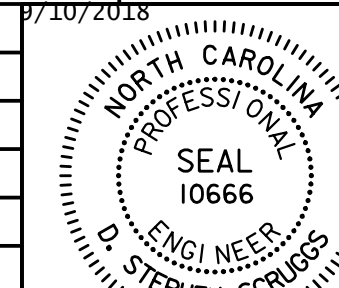


Prepared In the Office of:



AECOM TECHNICAL SERVICES OF NORTH CAROLINA, INC.  
701 CORPORATE CENTER DRIVE, SUITE 475, RALEIGH, NC 27607  
919-854-6200 919-854-6259 (fax)  
F - 0342

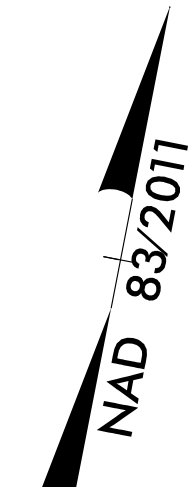
PROJECT REFERENCE NO.	SHEET NO.
R-3825B	UC-19
DESIGNED BY:	9/7/2018
DRAWN BY:	
CHECKED BY:	
APPROVED BY:	
REVISED:	
NORTH CAROLINA DEPARTMENT OF TRANSPORTATION	
UTILITIES ENGINEERING SECTION	
PHONE: (919) 707-6690	
FAX: (919) 250-4151	



D. Stephen Scruggs  
PLANS ONLY

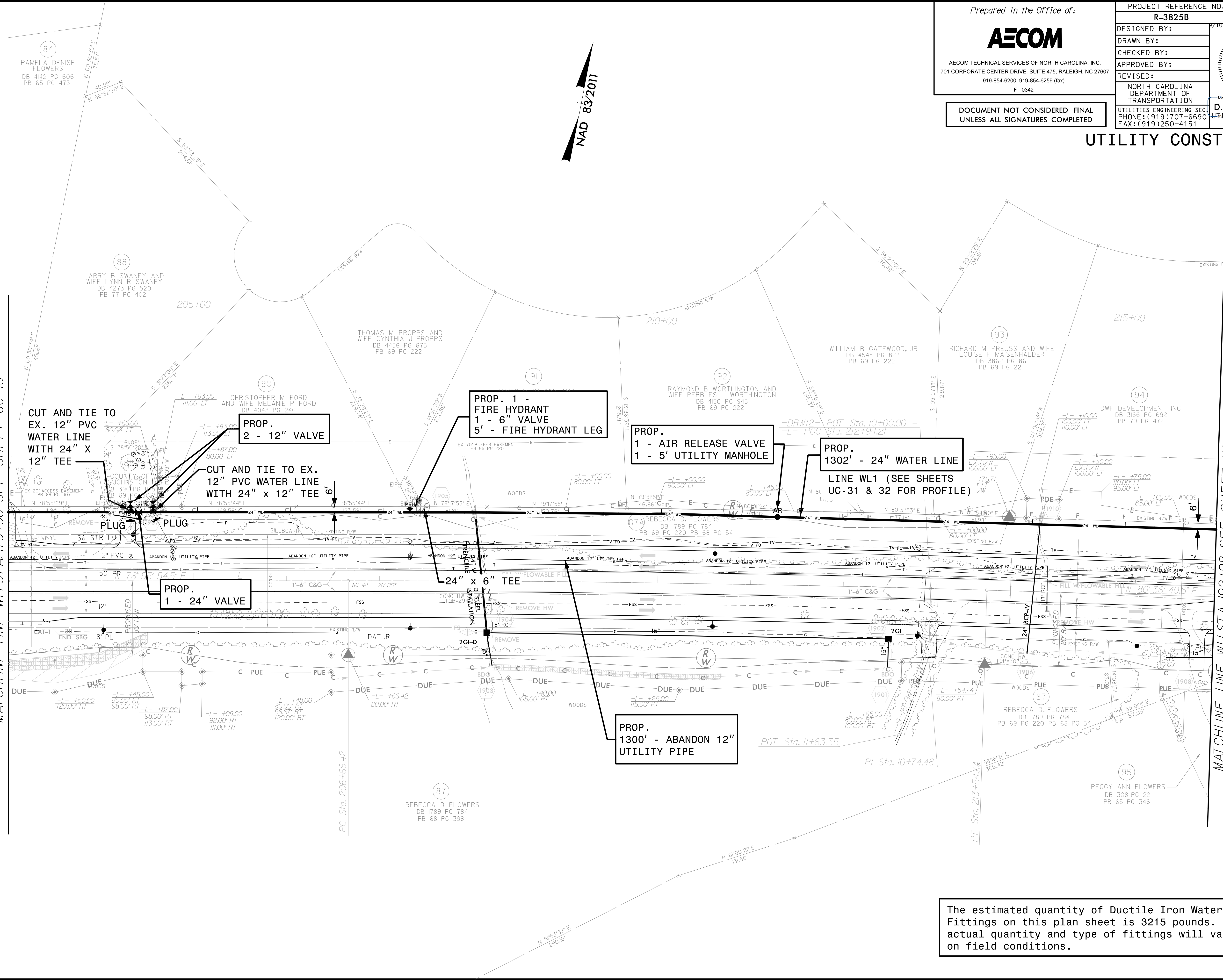
DOCUMENT NOT CONSIDERED FINAL  
UNLESS ALL SIGNATURES COMPLETED

# UTILITY CONSTRUCTION



MATCHLINE LINE WL STA. 179+96 SEE SHEET UC-18

MATCHLINE LINE WL STA. 192+98 SEE SHEET UC-20



CUT AND TIE TO EX. 12" PVC WATER LINE WITH 24" X 12" TEE

PROP. 2 - 12" VALVE

CUT AND TIE TO EX. 12" PVC WATER LINE WITH 24" X 12" TEE

PROP. 1 - FIRE HYDRANT  
1 - 6" VALVE  
5' - FIRE HYDRANT LEG

PROP. 1 - AIR RELEASE VALVE  
1 - 5' UTILITY MANHOLE

PROP. 1302' - 24" WATER LINE  
LINE WL1 (SEE SHEETS UC-31 & 32 FOR PROFILE)

PROP. 1 - 24" VALVE

24" X 6" TEE

PROP. 1300' - ABANDON 12" UTILITY PIPE

The estimated quantity of Ductile Iron Water Pipe Fittings on this plan sheet is 3215 pounds. The actual quantity and type of fittings will vary based on field conditions.

DATE: 9/7/2018  
TIME: 2:55:50 PM  
DGN: R3825B\_UC\_Plan909P