

Prepared In the Office of:

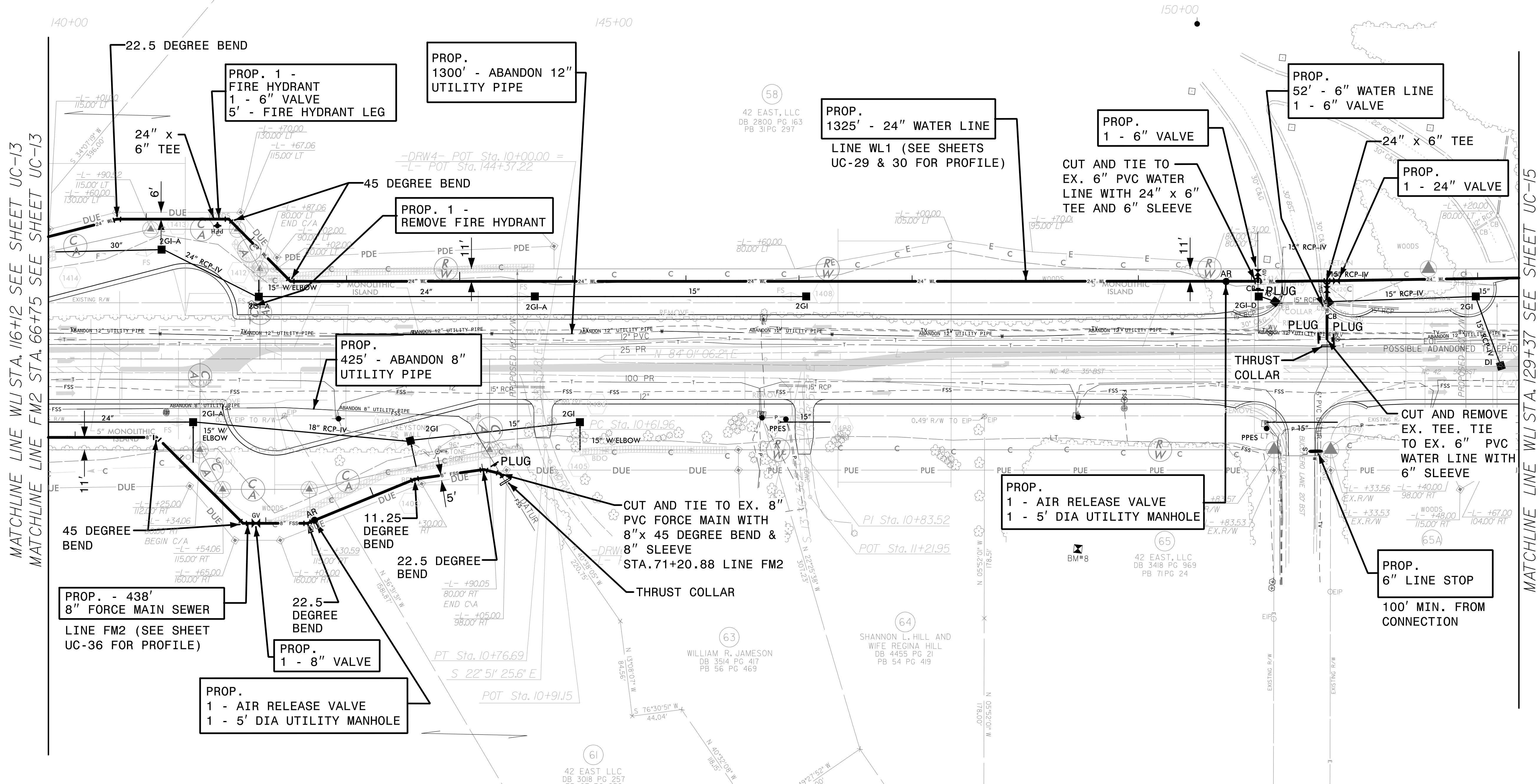
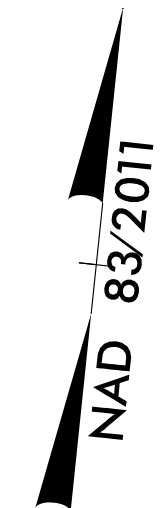
AECOM

AECOM TECHNICAL SERVICES OF NORTH CAROLINA, INC.
701 CORPORATE CENTER DRIVE, SUITE 475, RALEIGH, NC 27607
919-854-6200 919-854-6259 (fax)
F - 0342

DOCUMENT NOT CONSIDERED FINAL
UNLESS ALL SIGNATURES COMPLETED

PROJECT REFERENCE NO.	SHEET NO.
R-3825B	UC-14
DESIGNED BY:	9/17/2018
DRAWN BY:	
CHECKED BY:	
APPROVED BY:	
REVISED:	
NORTH CAROLINA DEPARTMENT OF TRANSPORTATION	
D. Stephen Scruggs SEAL 10666 ENGINEER STEPHEN SCRUGGS	
UTILITIES ENGINEERING SEC. PHONE: (919) 707-6690 FAX: (919) 250-4151	

UTILITY CONSTRUCTION



MATCHLINE LINE WL1 STA. 116+12 SEE SHEET UC-13
MATCHLINE LINE FM2 STA. 66+75 SEE SHEET UC-13

MATCHLINE LINE WL1 STA. 129+37 SEE SHEET UC-15

The estimated quantity of Ductile Iron Sewer Pipe Fittings on this plan sheet is 790 pounds. The actual quantity and type of fittings will vary based on field conditions.

The estimated quantity of Ductile Iron Water Pipe Fittings on this plan sheet is 5555 pounds. The actual quantity and type of fittings will vary based on field conditions.

DATE: 9/17/2018
TIME: 12:09:50 PM
DGN: R3825B_UC_P04.dgn