

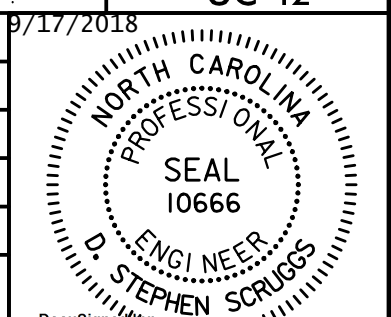
Prepared In the Office of:



AECOM TECHNICAL SERVICES OF NORTH CAROLINA, INC.  
701 CORPORATE CENTER DRIVE, SUITE 475, RALEIGH, NC 27607  
919-854-6200 919-854-6259 (fax)  
F - 0342

DOCUMENT NOT CONSIDERED FINAL  
UNLESS ALL SIGNATURES COMPLETED

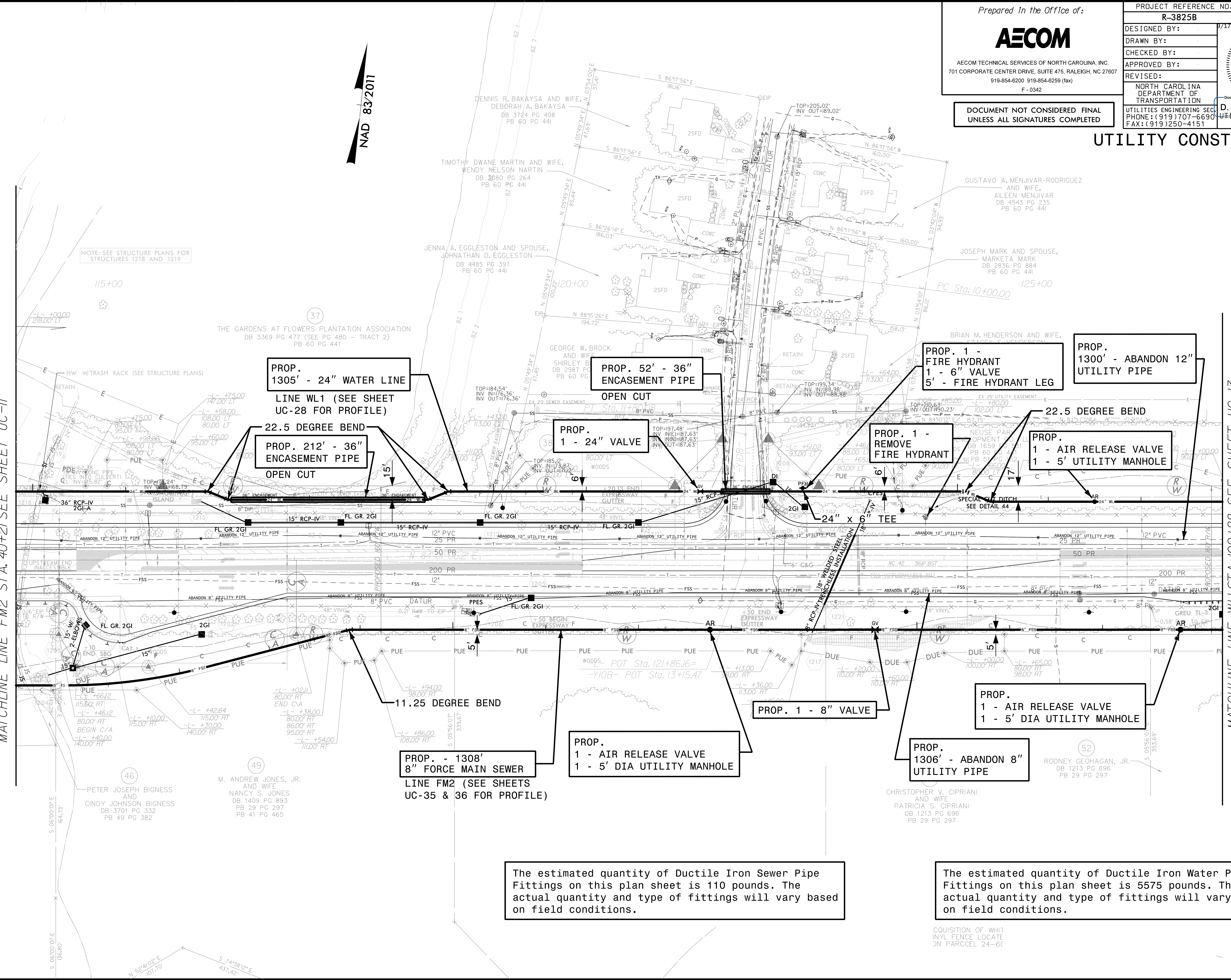
PROJECT REFERENCE NO.	R-3825B	SHEET NO.	UC-12
DESIGNED BY:		DATE:	9/17/2018
DRAWN BY:			
CHECKED BY:			
APPROVED BY:			
REVISED:			
NORTH CAROLINA DEPARTMENT OF TRANSPORTATION		D. Stephen Scruggs UTILITY ENGINEERING SEC. PHONE: (919) 707-6690 FAX: (919) 250-4151	



# UTILITY CONSTRUCTION

MATCHLINE LINE WL1 STA. 89+82 SEE SHEET UC-11  
MATCHLINE LINE FM2 STA. 40+21 SEE SHEET UC-11

MATCHLINE LINE WL1 STA. 102+88 SEE SHEET UC-13  
MATCHLINE LINE FM2 STA. 53+28 SEE SHEET UC-13



NOTE: SEE STRUCTURE PLANS FOR STRUCTURES 1218 AND 1219

PROP. 1305' - 24" WATER LINE  
LINE WL1 (SEE SHEET UC-28 FOR PROFILE)

PROP. 52' - 36" ENCASEMENT PIPE  
OPEN CUT

PROP. 1 - FIRE HYDRANT  
1 - 6" VALVE  
5' - FIRE HYDRANT LEG

PROP. 1300' - ABANDON 12" UTILITY PIPE

22.5 DEGREE BEND  
PROP. 212' - 36" ENCASEMENT PIPE  
OPEN CUT

PROP. 1 - 24" VALVE

PROP. 1 - REMOVE FIRE HYDRANT

22.5 DEGREE BEND  
PROP. 1 - AIR RELEASE VALVE  
1 - 5' UTILITY MANHOLE

11.25 DEGREE BEND

PROP. - 1308' 8" FORCE MAIN SEWER  
LINE FM2 (SEE SHEETS UC-35 & 36 FOR PROFILE)

PROP. 1 - AIR RELEASE VALVE  
1 - 5' DIA UTILITY MANHOLE

PROP. 1 - 8" VALVE

PROP. 1306' - ABANDON 8" UTILITY PIPE

The estimated quantity of Ductile Iron Sewer Pipe Fittings on this plan sheet is 110 pounds. The actual quantity and type of fittings will vary based on field conditions.

The estimated quantity of Ductile Iron Water Pipe Fittings on this plan sheet is 5575 pounds. The actual quantity and type of fittings will vary based on field conditions.

DATE: 9/17/2018  
TIME: 12:08:54 PM  
DGN: R3825B\_UC-12.dgn

ACQUISITION OF WHI INYL FENCE LOCATE ON PARCEL 24-6