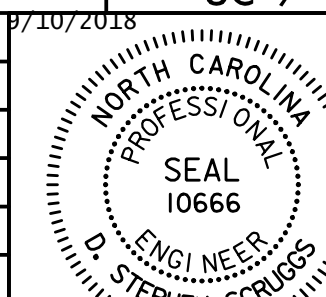


PROJECT REFERENCE NO.	SHEET NO.
R-3825B	UC-9
DESIGNED BY:	
DRAWN BY:	
CHECKED BY:	
APPROVED BY:	
REVISED:	
NORTH CAROLINA DEPARTMENT OF TRANSPORTATION	
UTILITIES ENGINEERING SECTION PHONE: (919) 707-6690 FAX: (919) 250-4151	

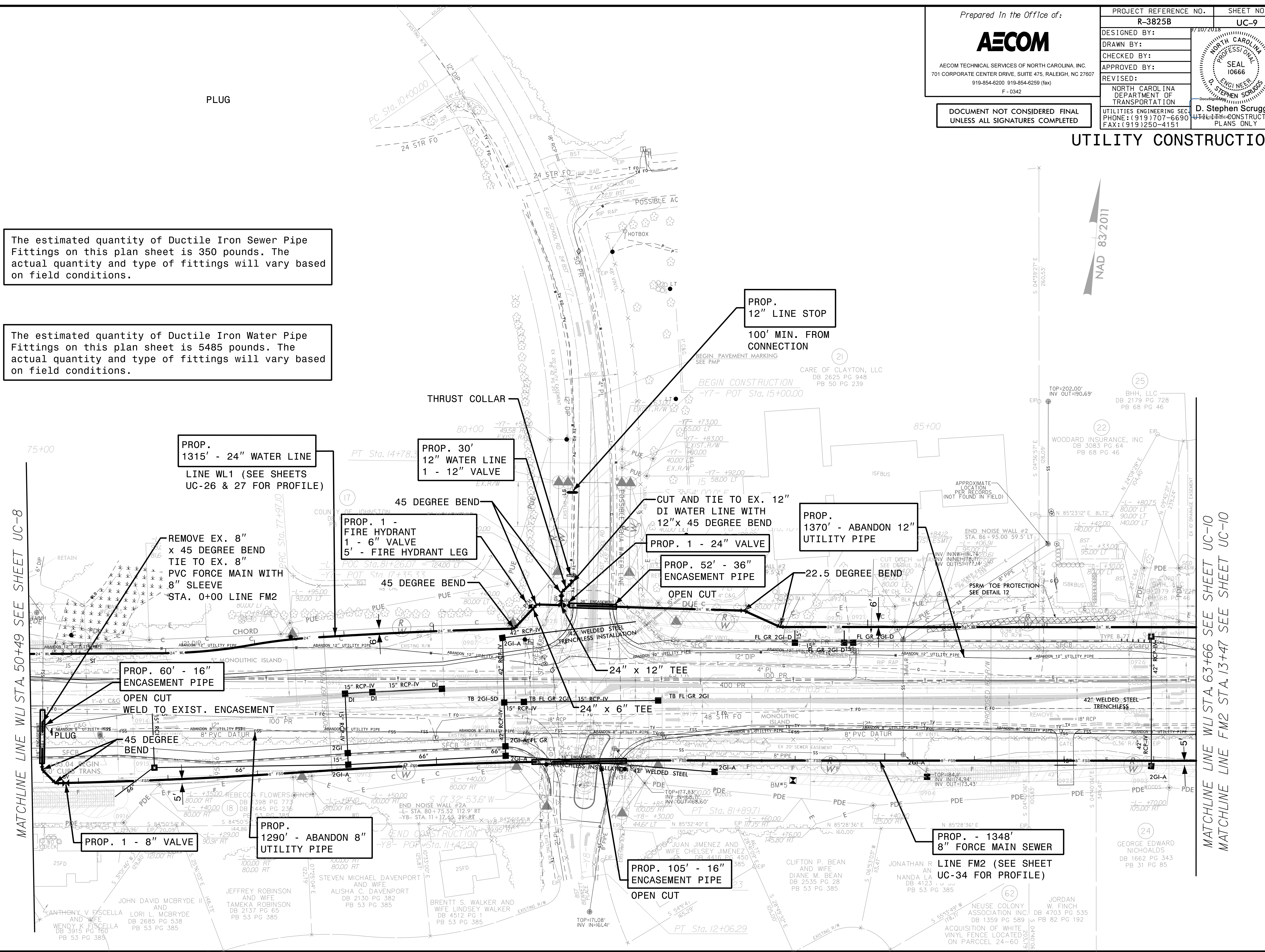


D. Stephen Scruggs
PLANS ONLY

UTILITY CONSTRUCTION

The estimated quantity of Ductile Iron Sewer Pipe Fittings on this plan sheet is 350 pounds. The actual quantity and type of fittings will vary based on field conditions.

The estimated quantity of Ductile Iron Water Pipe Fittings on this plan sheet is 5485 pounds. The actual quantity and type of fittings will vary based on field conditions.



MATCHLINE LINE WL1 STA. 50+49 SEE SHEET UC-8

MATCHLINE LINE WL1 STA. 63+66 SEE SHEET UC-10
MATCHLINE LINE FM2 STA. 13+47 SEE SHEET UC-10

DATE: 9/7/2018
TIME: 2:53:58 PM
DGN: R3825B_UC-9_PWD/BAM

ANTHONY V. FISCELLA AND WIFE
DB 3915 PG 180
PB 53 PG 385

JOHN DAVID MCBRYDE II AND WIFE
LORI L. MCBRYDE
DB 2685 PG 538
PB 53 PG 385

JEFFREY ROBINSON AND WIFE
TAMEKA ROBINSON
DB 2137 PG 65
PB 53 PG 385

STEVEN MICHAEL DAVENPORT AND WIFE
ALISHA C. DAVENPORT
DB 2130 PG 382
PB 53 PG 385

BRENT S. WALKER AND WIFE
LINDSEY WALKER
DB 4512 PG 1
PB 53 PG 385

CLIFTON P. BEAN AND WIFE
DIANE M. BEAN
DB 2535 PG 28
PB 53 PG 385

JONATHAN R. AN AND WIFE
NANDA LA
DB 4123 PG 1
PB 53 PG 385

JORDAN W. FINCH
DB 4703 PG 535
PB 82 PG 192

NEUSE COLONY ASSOCIATION, INC.
DB 1359 PG 589

ACQUISITION OF WHITE VINYL FENCE LOCATED ON PARCEL 24-60

GEORGE EDWARD NICHOLDS
DB 1662 PG 343
PB 31 PG 85