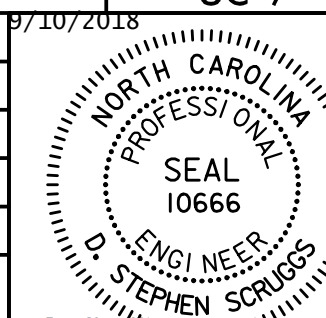
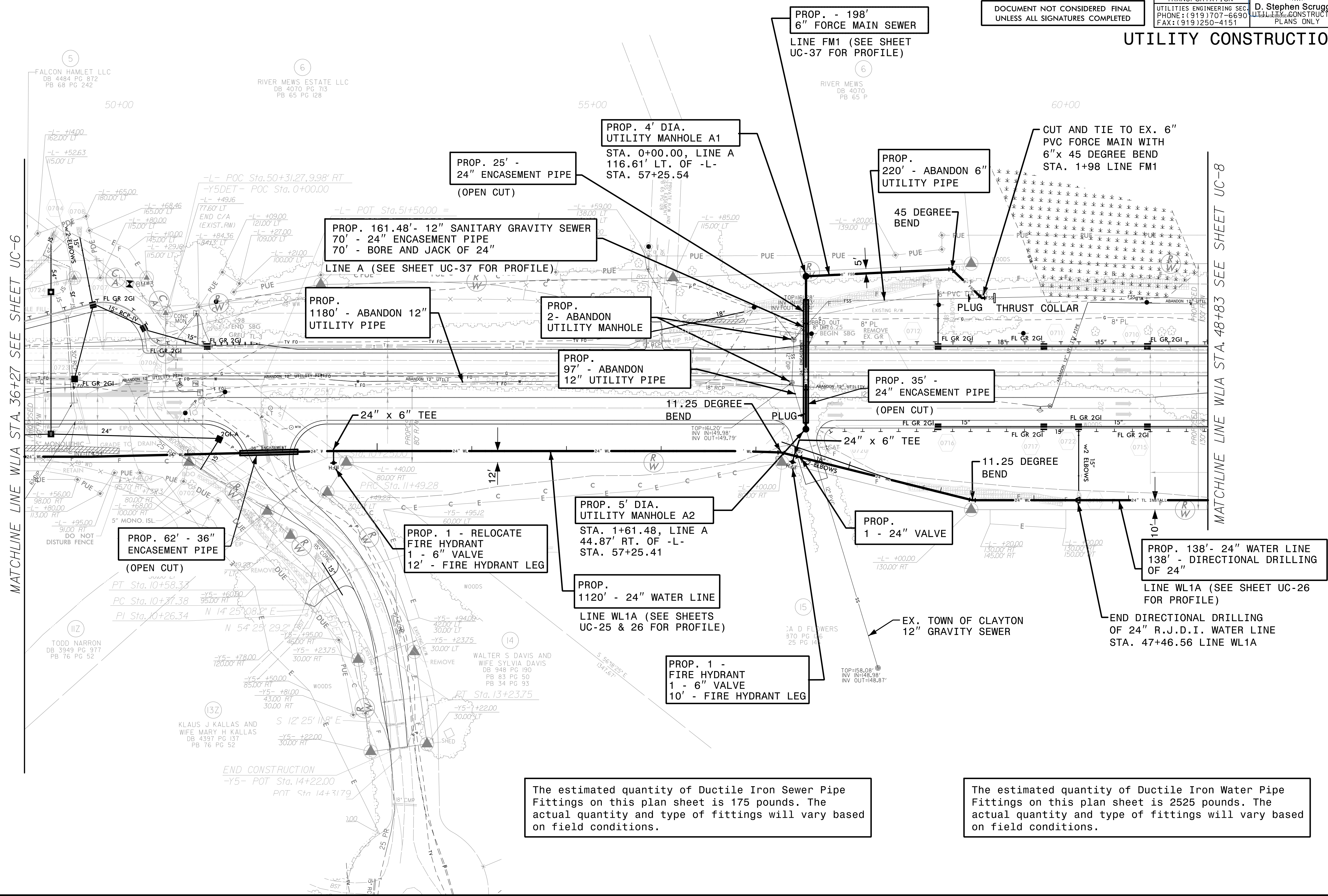


PROJECT REFERENCE NO.	R-3825B	SHEET NO.	UC-7
DESIGNED BY:			
DRAWN BY:			
CHECKED BY:			
APPROVED BY:			
REVISED:			
NORTH CAROLINA DEPARTMENT OF TRANSPORTATION		D. Stephen Scruggs UTILITY ENGINEERING SEC. PHONE: (919) 707-6690 FAX: (919) 250-4151	

DOCUMENT NOT CONSIDERED FINAL
UNLESS ALL SIGNATURES COMPLETED

UTILITY CONSTRUCTION



The estimated quantity of Ductile Iron Sewer Pipe Fittings on this plan sheet is 175 pounds. The actual quantity and type of fittings will vary based on field conditions.

The estimated quantity of Ductile Iron Water Pipe Fittings on this plan sheet is 2525 pounds. The actual quantity and type of fittings will vary based on field conditions.

DATE: 9/7/2018
TIME: 2:53:56 PM
DGN: R3825B_UC_PAK7.dgn

MATCHLINE LINE WL1A STA. 36+27 SEE SHEET UC-6

MATCHLINE LINE WL1A STA. 48+83 SEE SHEET UC-8